

Project Name:		Customer:		Date:	
Quote Number:		Model Number (select from below):		Seat Placement:	N/A
Customization Requested:					

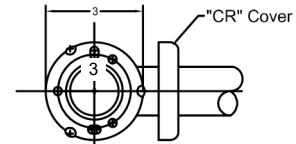
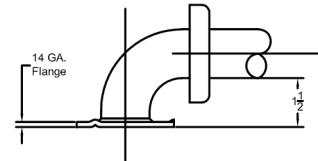
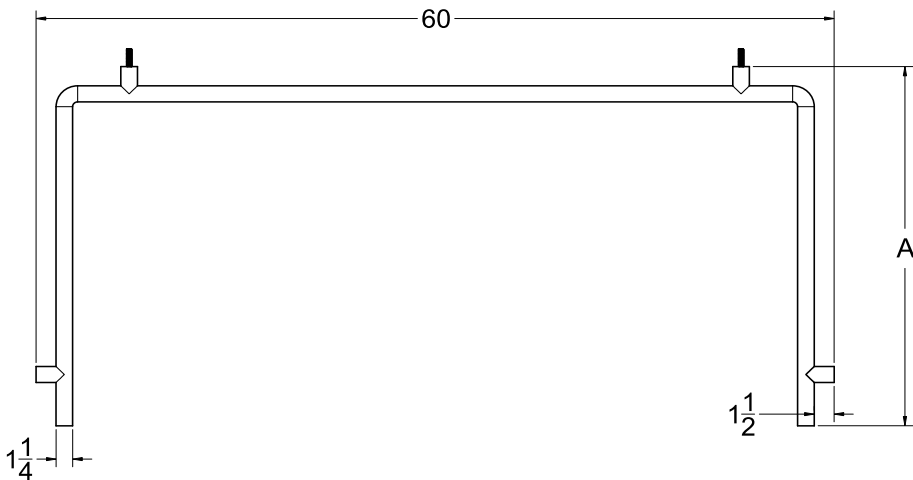
Standard Features and Measurements

- Meets ADA and ANSI requirements for size and strength when installed correctly
- Compatible with EverFab models S6334 and S6336

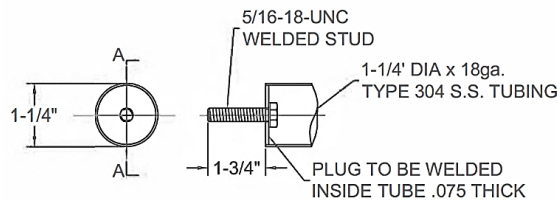
Style:	Elite Series U-Bar
Material:	Polished Stainless Steel
Approximate Weight:	14 lbs.

Optional Features

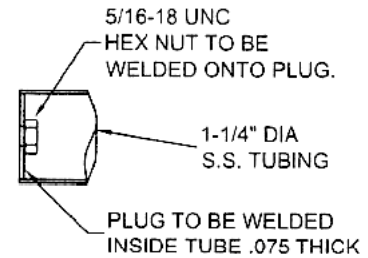
- Available with flanges for in-field installation



Detail of Flanged Option



Detail of Stud End



Detail of Internal Nut

Available Configurations

Model Number	Flanges For In-Field Installation	Length of Dimension A
EF-6336-UBE	No	30"
EF-6336-UFE	Yes	30"
EF-6334-UBE	No	28"
EF-6334-UFE	Yes	28"



_____	__/__/	_____	__/__/
Architect	Date	Engineer	Date
_____	__/__/	_____	__/__/
General Contractor	Date	Plumbing Contractor	Date

Please email or fax a signed submittal sheet to the EverFab office to purchase.

Email: info@everfabath.com | Fax: 503.743.8153 | Phone: 503.303.3300 | www.everfabath.com | PO Box 490, Aumsville, OR 97325

Due to the nature of the material all measurements may vary by $\pm 3/8"$. Dimensions needed for site preparation should be measured from the unit.