

Project Name:		Customer:		Date:	
Quote Number:		Model Number (select from below):		Seat Placement:	N/A
Customization Requested:					

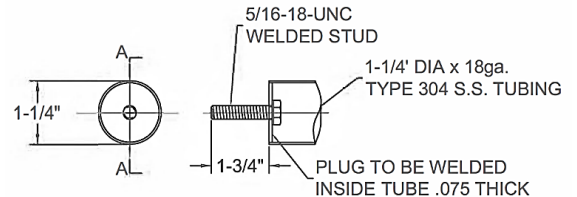
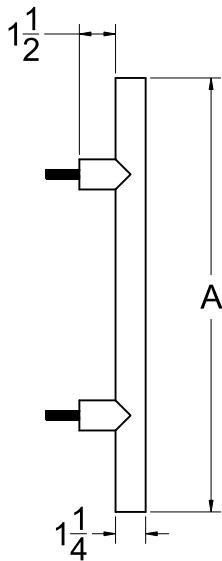
Standard Features and Measurements

- Meets ADA and ANSI requirements for size and strength when installed correctly
- Supports 250 lbs. as verified by independent industry leading lab. See everfabbath.com/test-results for complete report

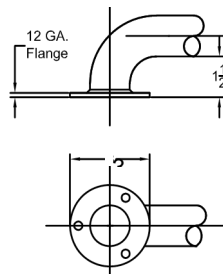
Style:	Elite Series Straight-Bar
Material:	Polished Stainless Steel
Approximate Weight:	8 lbs.

Optional Features

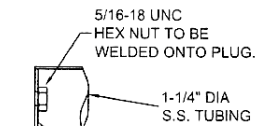
- Available with flanges for in-field installation



Detail of Stud



Detail of Flanged Option



Detail of Internal Nut

Available Configurations

Model Number	Flanges For In-Field Installation	Length of Dimension A
EF-0012-SBE	No	12"
EF-0012-SFE	Yes	12"
EF-0018-SBE	No	18"
EF-0018-SFE	Yes	18"
EF-0024-SBE	No	24"
EF-0024-SFE	Yes	24"

_____	_/_/_	_____	_/_/_
Architect	Date	Engineer	Date
_____	_/_/_	_____	_/_/_
General Contractor	Date	Plumbing Contractor	Date

Please email or fax a signed submittal sheet to the EverFab office to purchase.