



EVERFAB



PRODUCT CATALOG

everfab bath.com | 503-303-3300





THE **EVERFAB** ADVANTAGE

Who We Are & What We Do	4
Innovative Shower Construction	8
The EverFab RhinoBottom™	10
Strength Test Results	11
Shipping & Storage	14
Additional Resources	16
Revit files	16
Custom Products	16
3D Printed Models	16
Product Code Guide	17
Products	18
Accessories	32

THE EVERFAB

ADVANTAGE



WHO IS EVERFAB AND WHY DO WE DO WHAT WE DO?

We are a leading manufacturer of reinforced, accessible fiberglass showers. To date, we have **built and shipped over 65,000 showers with an industry-leading defect rate of less than 1%.** Our commitment is to continually expand our capacity to deliver high-quality showers to more markets across the country. We prioritize our customers and are dedicated to crafting durable, handmade, and accessible showers you can trust for years to come.

“

We started EverFab with a vision that we would never compromise on quality.

We strive to be world class in everything we do by hiring the best people, building the best product, and providing the best customer experience. This vision and dedication to excellence continue to push us to deliver the exceptional results that our customers expect.”



DAN BRYAN, CEO
EVERFAB

WHAT IS THE

EVERFAB

ADVANTAGE?

STRENGTH TESTED:

Our units support at least 2x the weight required by the 2010 Americans with Disabilities Act Standards for Accessible Design.

COMPLIANT:

The EverFab product catalog offers a variety of accessibility code-compliant models for all your bathroom design needs.

ON-TIME DELIVERY:

Partnering with EverFab means being confident that your product will arrive on time and in perfect condition.



30-YEAR WARRANTY:

We're so confident in our products' quality and durability that we offer a guarantee that every unit will be free from any defects in material or craftsmanship for up to 30 years.

ARCHITECT-FRIENDLY REVIT FILES:

Thanks to our partnership with leading BIM creators, we can offer Revit files and parametric models that make it easier than ever before to design the product you need.

Composite Construction:

We reinforce our units using a unique composite core material unlike anyone else in the market. It means our showers are lighter, stronger, and more durable than those built with wood.

EverFab RhinoBottom:

We support our showers like nobody else out there using a composite floor plate we call the RhinoBottom. It's as strong as it sounds and eliminates the need for a mortar base during installation.

“

Gelcoat products have been a real challenge for us over the past few years. From product quality, to lead times, to customer service, the manufacturers in our market have been on a downhill slide.

Needless to say, we'd been looking for change and we were very excited about the opportunity Everfab brought to the table with their entrance to the market. They honestly couldn't be more different than what we were used to.

We know we've got a real partner in Everfab.

A partner who views their work as what it is, a craft. A partner who understands and values the relationship of all stakeholders in the supply chain. A partner we can be confident building our business with.”

NATHAN BERRY, GENERAL MANAGER
HAJOCA CORP. DBA INLAND SUPPLY

HAJOCA
— SINCE 1858 —

“

We had a great experience with EverFab.

The products they shipped us were very well protected and seamless to install.”

JOHN G., GENERAL MANAGER
JET MECHANICAL



INNOVATIVE SHOWER CONSTRUCTION

We're the only manufacturer that constructs fiberglass showers the way we do. We're confident that our high quality materials and unique composite structure will deliver an advantage to our customers that they couldn't gain any other way.

GEL COAT FINISH

An extra thick polyester gel coat prevents print through which occurs when texture from the other composite layers can be seen and felt on the interior finish of the tub or shower.

MULTIPLE FIBERGLASS LAYERS

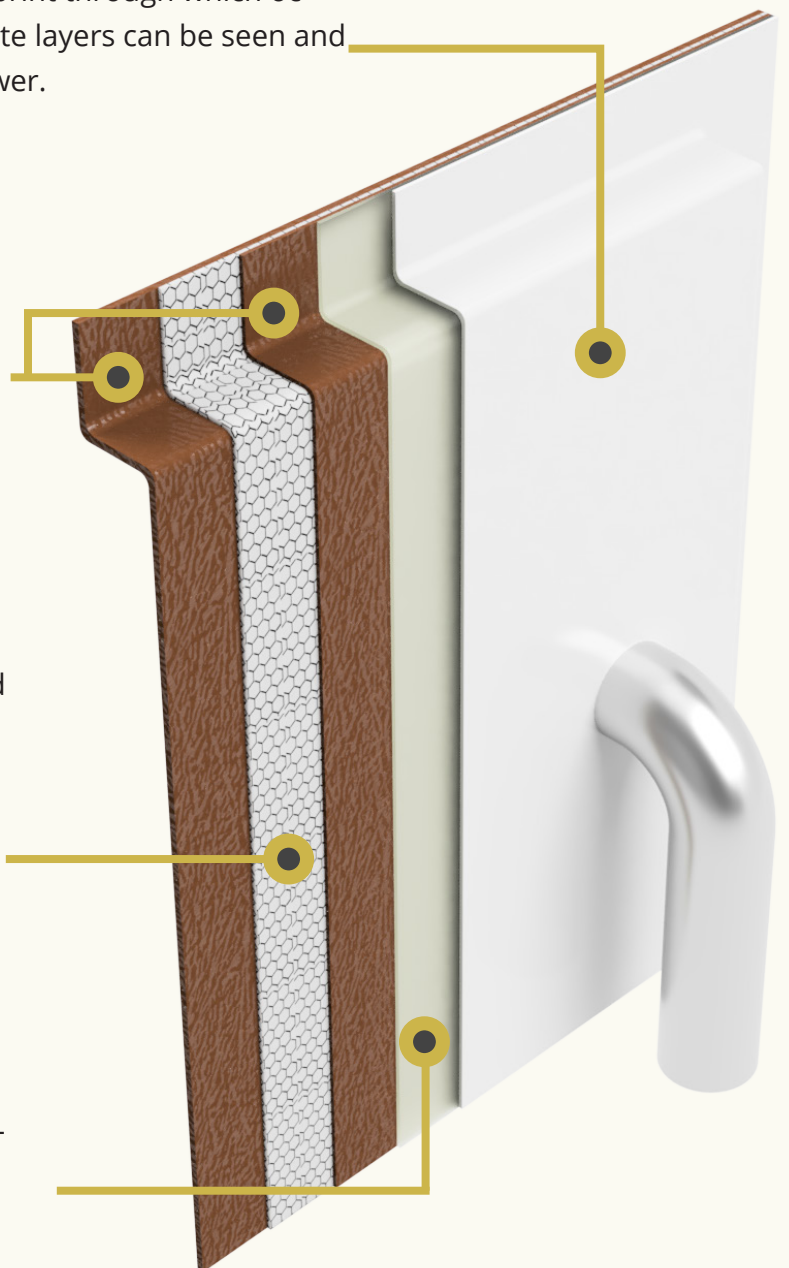
Our composite contains more fiberglass and less calcium sulfate than most other manufacturers which leads to strong units that won't crack or break during installation or over time with continual use. Each fiberglass layer is rolled on by hand which allows for a stronger cure and smoother handling.

EVERFAB CORE MATERIAL

Virtually everyone uses wood or cardboard to reinforce their units. Unlike organic materials, our core material absorbs the fiberglass resin allowing the layers to fully bond preventing separation down the road. Along with better performance, our showers weigh half as much as those reinforced with wood.

SPRAY CORE

This material adds another layer of protection to ensure the gel coat is smooth and resistant to damage



“

I like how strong the EverFab showers are and the ease of installation.

KURT S., PROJECT MANAGER
TAPANI PLUMBING



“

I'm converting anyone I can to EverFab.

I think it's the best product out there

right now for the money in our area. They build stout units.”

ANDREY B., PROJECT MANAGER
VICON MECHANICAL CONTRACTOR





rhinobottom
by EverFab



Bottom cracking is the number one failure point in the industry. That's why we've made it our number one priority.



It's constructed using the same composite material as the rest of the shower, and then laminated on. That means it won't break off like PVC legs or rot and sag over time like wood.



Plus, it's pre-leveled and diamond cut on a custom machine in our factory to eliminate further labor on the job site like mortar beds and trimming.

**THERE'S NOTHING
ELSE LIKE THE
EVERFAB
RhinoBottom™
ON THE MARKET.**



4 Foot Shower Stall



**5 Foot Roll-in
Shower Stall**



5 Foot Tub Shower



STRENGTH TEST RESULTS

Carlson Testing Inc (CTI)
found the following during
the evaluation of EverFab units.

Field-installed grab bars
support a minimum of

500 lbs

Factory grab bars won't
fail until

1505 lbs

Factory-installed seats
support at least

1810 lbs



EverFab units support at least 2x the
weight required by the 2010 American
with Disabilities Act Standards
for Accessible Design

WHERE DOES THE STRENGTH COME FROM?

EverFab Core Material

- Eliminates warping and waving of fixture walls
- Finished fixtures are as much as 50% lighter than plywood-backed units without a reduction in strength
- Similar materials are used to reinforce other fiberglass products such as boat hulls and wind turbine blades, but we're the only manufacturer to use it in showers.

Why not Wood or Cardboard?

- Both materials don't allow the fiberglass layers to bond together which can lead to separation and peeling
- Manufacturers often use wood or cardboard because they are cheaper and less labor-intensive
- Wood and cardboard-backed fixtures can swell and distort when rained or snowed on while being stored outside
- Wood-backed fixtures are heavy and often require multiple individuals to maneuver and install



SHIPPING & STORAGE

Our goal is to make it so our customers can be 100% confident that the product they order will arrive on time and in nothing less than flawless condition. **We know how important maintaining a schedule is, so we're committed to doing everything we can to ensure every order is delivered exactly when and where you need it.**



Where other shower units will warp, fade, or begin to rot when left outside, Ever-Fab's models are made out of non-organic materials and are perimeter reinforced during shipping and storage.

This means our units will maintain their finish and quality for months or years, even if stored outside.



Perimeter crated to protect the skirt, apron, and flanges.



Wood board on the back of low-profile models prevents the drain and shower floor from sitting directly on the ground during shipping and storage.



The diagonal board is used on 5-foot shower stalls for added protection.

“

I have had the pleasure of working with the Everfab team for many years.

The quality of their fiberglass units remains second to none while they continue to get us product in a timely manner.

Everfab is our first choice on our design-build projects as we know from history that they stand firmly behind their product and are ready to assist us in any way they can.”

BRIAN STEWART, PRESIDENT
STEWART MECHANICAL



“

We can't imagine using any other supplier than EverFab.”

DOUG T.
MISSION SENIOR LIVING



ADDITIONAL **RESOURCES**



REVIT FILES

We've partnered with leading BIM creators and now offer simple and easy-to-use Revit families. These include parametric models with customizable grab bar and seat configurations to meet various accessibility code requirements.



CUSTOM PRODUCTS

We offer a wide variety of shower units that can fit into just about any design or layout. But if you can't find a model that checks all of your boxes, our team of professional craftsmen will work with you to create a customized solution that will.



3D PRINTED MODELS

Need help getting a client to visualize your design ideas? When you work with EverFab, we will turn your design into a 3D model and have it shipped to your client's doorstep within 7 days. This way, your client can easily visualize your design and you can ensure it will satisfy their needs. With our 3D printed models, you can gain full confidence in our products prior to purchasing.

PRODUCT CODE

S 6 3 3 4 A

This 4-digit number indicates the approximate overall **width and depth of the unit**. For example, this code represents a shower that is 63" wide by 34" deep.

The letters following the 4 digit size code further describe the unit:

A - ADA Adaptable

B - ANSI Type B Adaptable

RW or RF - unit includes a return wall or return flange

An additional '**T**' proceeding the letters above indicates a simulated tile design. If present, the several digits following indicate the tile size. Standard tile size is 12"x24" if no numbers are present

The initial letters indicate the unit type:

TS - tub shower

S - shower stall

T - bathtub only

SP - shower pan

An additional '**S**' following any of the type letters above indicates the unit includes a shelf. An additional '**T**' indicates the design includes a linear trench drain



1 L P - R

This number indicates the **configuration of pre-installed grab bars and seat**:

- 0:** No grab bars and seat
- 1:** Grab bar and seat
- 2:** U-shaped grab bar
- 3:** Grab bar and seat configuration that meets ANSI A117.1 Type A roll-in shower accessibility requirements

These letters indicate the threshold type (*see illustrations below*):

- LP:** Low profile
- NR:** No-recess barrier-free ramp
- Blank:** Standard threshold height

This letter indicates seat placement for showers or drain placement for tub showers. '**L**' stands for **left placement** and '**R**' stands for **right placement** when standing outside looking into the shower enclosure.



¼" No-Recess
Barrier Free Ramp



1½" Standard



⅝" Low Profile

EVERFAB PRODUCTS



We meticulously sculpt and construct each model by hand to ensure our customers have durable showers they can comfortably rely on for years to come.

5' Roll-In Showers

Product Code: **S6334A**



S6334A0



S6334A2



S6334A1



S6334A3

This one-piece fiberglass ADA roll-in shower is constructed from two layers of a hand-rolled, fiberglass-reinforced composite, an intermediate layer of polyester spray core, and an unsaturated polyester gel coat finish. The S6334A is a durable, crack-resistant, ANSI Type A, California Title 24, and ADA compliant shower that can be easily installed in various bathroom layouts and designs.

Exterior Dimensions:
63" X 34"

Clear Floor Space:
60" x 31 1/4"

Threshold Height:
1 5/8", 1", or 1/4" no-recess

Product Code: **S6336A**



S6336A0



S6336A2



S6336A1



S6336A3

The S6336A one-piece fiberglass roll-in shower stall is ANSI Type A, CA Title 24, Washington Administrative Code (WAC), and ADA compliant shower stall is durable, crack and chip resistant, and can be easily installed in commercial and residential environments.

Exterior Dimensions:
63" X 36"

Clear Floor Space:
60" x 33 1/4"

Threshold Height:
1 5/8", 1", or 1/4" no-recess

Product Code: **S6339A**



S6339A0



S6339A2



S6339A1



S6339A3

The S6339A one-piece fiberglass roll-in shower stall is compliant with ANSI, CA Title 24, Washington Administrative Code (WAC), and ADA standards. It is durable, crack and chip resistant, and can be easily installed in commercial and residential environments.

Exterior Dimensions:
63" X 39"

Clear Floor Space:
60 1/4" x 36 3/8"

Threshold Height:
1 5/8", 1", or 1/4" no-recess

5' Roll-In Showers WITH SIMULATED TILE

Product Code: **S6236TA**



S6236TA0



S6236TA2



S6236TA1



S6236TA3

This one-piece fiberglass ADA roll-in shower includes simulated 12" x 24" tiles. The S6236TA is a durable, crack-resistant, ANSI Type A, California Title 24, and ADA compliant shower that can be easily installed in various bathroom layouts and designs.

Exterior Dimensions:
62" X 36"

Clear Floor Space:
60" x 33 ¾"

Threshold Height:
1 ½", 1", or ¼" no-recess

Product Code: **S6336TA**



S6336TA0



S6336TA2



S6336TA1



S6336TA3

The S6336TA is a one-piece roll-in type shower stall with a simulated 12" x 24" tile design. It is compliant with all major accessibility codes, including the Universal Plumbing Code, IAPMO, ADA, ANSI, California Title 24, and Washington Administrative Code.

Exterior Dimensions:
63" X 36"

Clear Floor Space:
60" x 33 ¾"

Threshold Height:
1 ½", 1", or ¼" no-recess

Product Code: **S6339TA**



S6339TA0



S6339TA2



S6339TA1



S6339TA3

The S6339TA fiberglass roll-in shower stall is fully reinforced with EverFab's unique composite core material which allows for factory or field installation of ADA compliant grab bars and seat.

Exterior Dimensions:
63" X 39"

Clear Floor Space:
60 ¼" X 36 ¾"

Threshold Height:
1 ½", 1", or ¼" no-recess

5' Roll-In Shower WITH SHELF

Product Code: **SS6338A**



SS6338A0



SS6338A2



SS6338A1



SS6338A3

The SS6338A one-piece fiberglass roll-in shower stall features a continuous back wall shelf and is made just as durable as the rest of the EverFab showers.

Exterior Dimensions:
63" X 38"

Clear Floor Space:
60" x 32 1/8"

Threshold Height:
1 1/2", 1", or 1/4" no-recess

5' Alternate Roll-In Type Shower

Product Code: **S6339RWA**



Exterior Dimensions:
63" X 39"

Clear Floor Space:
60 1/4" X 36 3/8"

Threshold Height:
1 1/2", 1", or 1/4" no-recess



S6339RWA0



S6339RWA1

The S6339RWA is a two-piece alternate roll-in type shower with EverFab's unique RhinoBottom and anti-slip floor. It meets ADA, ANSI, and California Title 24 requirements and eliminates many of the water retention issues common with standard roll-in showers.

5' Alternate Roll-In Type Shower WITH SIMULATED TILE

Product Code: **S6339RWT A**



Exterior Dimensions:
63" X 39"

Clear Floor Space:
60 1/4" X 36 3/8"

Threshold Height:
1 1/2", 1", or 1/4" no-recess



S6339RWT A0



S6339RWT A1

The S6339RWT A is a two-piece alternate roll-in type shower stall with water retention benefits and a stylish simulated 12" x 24" tile.

3 ½' Roll-in Shower CA TITLE 24 ONLY

Product Code: **S4452A**



Exterior Dimensions:

44 ¼" x 52"

Clear Floor Space:

42" x 49 ⅝"

Threshold Height:

1 ⅜" or ¾"



S4452A0



S4452A1

The S4452A is designed to be a roll-in shower stall that complies with California Title 24 CBC Chapter 11A requirements as well as the Washington Administrative Code (WAC). It's built with the reinforcement needed for ADA compliant grab bars and shower seats.

3' Transfer Shower

Product Code: **S3839A**



Exterior Dimensions:

38" x 38 ½"

Clear Floor Space:

36" x 36"

Threshold Height:

1 ⅜" or ⅝"



S3839A0



S3839A1

The S3839A fiberglass transfer shower stall offered by EverFab is constructed from two separate layers of fiberglass reinforced composite, a polyester spray layer, and an unsaturated polyester gel coat finish that helps prevent cracks, chips, and other damage.

3' Transfer Shower WITH RETURN FLANGE

Product Code: **S3838RFA**



Exterior Dimensions:

38" x 38"

Clear Floor Space:

36" x 36"

Threshold Height:

1 ⅜" or ⅝"



S3838RFA0



S3838RFA1

The S3838RFA fiberglass transfer shower stall is built tough like the rest of EverFab's showers. Along with the sturdy construction, it includes EverFab's unique return flange to comply with the most strict interpretation of the ADA codes.

3' Transfer Shower WITH RETURN FLANGE AND SHELF

Product Code: **SS3842RFA**



Exterior Dimensions:

38" x 41 ¾"

Clear Floor Space:

36" x 36"

Threshold Height:

1 ⅜" or ⅝"



SS3842RFA0



SS3842RFA1

The SS3842RFA fiberglass transfer shower stall includes EverFab's unique return flange as well as a full shelf along the back wall.

4' Transfer Shower

Product Code: **S4839A**



Exterior Dimensions:

48" x 38 ¾"

Clear Floor Space:

45" x 36"

Threshold Height:

1 ½" or ⅝"



S4839A0



S4839A1

The S4839A model offers a one-piece fiberglass transfer shower stall unit that's compliant with ANSI and Washington Administrative Code (WAC) accessibility standards.

3' Shower WITH RETURN FLANGE

Product Code: **S3839RFB**



Exterior Dimensions:

38 ¼" x 38 ½"

Clear Floor Space:

36 ⅜" x 36 ½"

Threshold Height:

6"

The S3839RFB fiberglass transfer shower stall is a great option for student and affordable housing projects. It has been used in dorms around the country with great longterm success. This shower is reinforced to meet ANSI Type B requirements and will support field-installed grab bars or a seat.

4' Shower WITH FLOATING SHELVES AND RETURN FLANGE

Product Code: **SS4631RFB**



Exterior Dimensions:

46 ½" x 32 ¼"

Threshold Height:

3 ⅝"

This shower takes advantage of a new ANSI A117.1 Type B size exception which allows for a more narrow shower stall. This model includes floating shelves and a return flange. EverFab is the only shower manufacturer to offer a shower this size and type allowed by the ANSI standard.

4' Shower WITH RETURN FLANGES

Product Code: **S4836RFB**



Exterior Dimensions:

48" x 36 ¾"

Clear Floor Space:

36 ¼" x 45 ¾"

Threshold Height:

4"

Constructed with two layers of fiberglass reinforced composite, an intermediate layer of polyester spray core, and an unsaturated polyester gel coat finish, the lightweight design of this one-piece fiberglass shower stall makes it easy to install, FHA compliant, and in line with ANSI Type B accessibility standards. Two return flanges allow unrestricted clearance on either side in front of the shower.

4' Shower WITH A BACK WALL SHELF

Product Code: **SS5141B**



Exterior Dimensions:

51" x 41 ⅜"

Clear Floor Space:

48 ½" x 36"

Threshold Height:

3"

This fiberglass one-piece shower unit is constructed out of four layers of material that give it exceptional durability and resistance to cracks, chips, and other damage that can affect the unit's quality. With 48" of clearance in front of the shower and ample standing floor space, this fiberglass one-piece shower unit complies with ANSI Type B accessibility standards.

4' Shower WITH SIMULATED TILE AND FLOATING SHELVES

Product Code: **SS5139TB**



Exterior Dimensions:

50 $\frac{3}{4}$ " x 38 $\frac{5}{8}$ "

Clear Floor Space:

48" X 36"

Threshold Height:

4"

This one-piece curbed shower is used primarily in FHA compliant projects. It includes 12" x 24" simulated tile and twin molded soap ledges for practical use.

5' Showers WITH SIMULATED TILE AND FLOATING SHELVES

Product Code: **SS6033TB**



Exterior Dimensions:

60" x 32 $\frac{5}{8}$ "

Clear Floor Space:

57 $\frac{1}{4}$ " x 30"

Threshold Height:

4"

The SS6033TB one-piece curbed shower features a simulated 12" x 24" tile design and molded shelves. It is reinforced with EverFab's unique composite core material according to FHA and ANSI Type B Unit requirements.

Product Code: **SS6239TB**



Exterior Dimensions:

62" x 38 $\frac{5}{8}$ "

Clear Floor Space:

59 $\frac{1}{4}$ " x 36"

Threshold Height:

4"

This one-piece curbed shower includes a 12" x 24" modern simulated tile design and twin molded soap ledges that offer a combination of class and convenience. EverFab's reinforced bottom plate and unique composite core material meet FHA and ANSI Type B Unit requirements, making this unit a durable choice.

5' Tub-Shower

Product Code: **TS6032A**



Exterior Dimensions:

60" X 32"

Gallon Capacity

39

Above Floor Rough:

3"



TS6032A0



TS6032A1

This one-piece fiberglass shower tub combo unit is EverFab's workhorse. 10s of thousands of this unit have been installed around the United States with great success and durability.

5' Tub-Showers WITH SHELF

Product Code: **TSS6032A**



Exterior Dimensions:

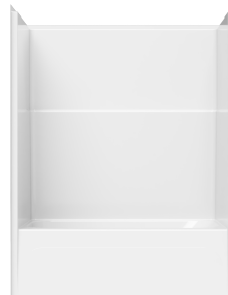
60" X 32" x 78 ½"

Gallon Capacity

39

Above Floor Rough:

3"



TSS6032A0



TSS6032A1

A one-piece tub shower combo unit needs to be built to last, and with the TSS6032A, that's exactly what you'll find. This shower is used often in single family construction all the way up to large multi-family projects.

Product Code: **TSS603276A**



Exterior Dimensions:

60" X 32" x 76 ¼"

Gallon Capacity:

39

Above Floor Rough:

3"



TSS603276A0



TSS603276A1

This tub shower with a shelf is slightly smaller than EverFab's original TSS6032A model. It was designed specifically for home layouts that include a window above the fixture. This shorter unit provides the space necessary.

5' Tub-Showers WITH SIMULATED TILE

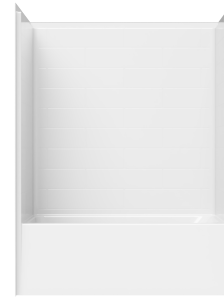
Product Code: **TS6030T624A**



Exterior Dimensions:
60" X 31"

Gallon Capacity:
35

Above Floor Rough:
3"



TS6030T624A0



TS6030T624A1

The 6"x 24" simulated tile offers class and comfort in an ADA compliant design. Designed to meet the requirements of tighter space than our 32" deep model.

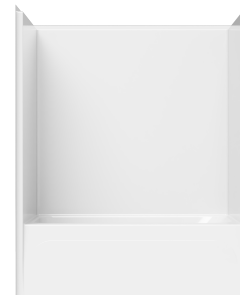
Product Code: **TS6032T624A**



Exterior Dimensions:
60" X 32"

Gallon Capacity
39

Above Floor Rough:
3"



TS6032T624A0



TS6032T624A1

The 6"x 24" simulated tile offers class and comfort in an ADA compliant design that's reinforced to meet all major accessibility code requirements.

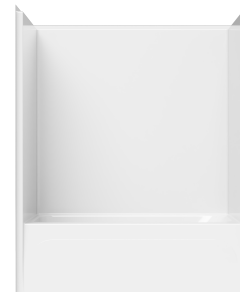
Product Code: **TS6036T624A**



Exterior Dimensions:
60" X 37 3/8"

Gallon Capacity:
46

Above Floor:
3"



TS6036T624A0



TS6036T624A1

EverFab's largest tub shower built to date. It includes 6" x 24" simulated tile and EverFab's signature modern look.

3' One-Piece Shower

Product Code: **S3637**



Exterior Dimensions:

36" x 37 1/4"

Threshold Height:

6"

Above Floor Rough:

2 3/4"

The S3637 3-foot shower stall unit is the ideal model for a smaller residential bathroom. The model is built from the same four layers of reinforced material that EverFab's one-piece fiberglass shower stall units are known for. This means it comes with reliable durability, easy installation, and a stain-resistant white gel coat finish to preserve the unit's pristine condition.

4' One-Piece Shower

Product Code: **S4837**



Exterior Dimensions:

48" x 37 1/4"

Threshold Height:

6"

Above Floor Rough:

2 1/4"

Specifically designed for residential use, the S4837 4-foot shower stall unit is constructed out of multiple layers hand-rolled fiberglass, giving it a stronger cure, smoother handling, and increased durability. This residential shower stall is a versatile and easy-to-install unit with a stain-resistant finish that won't crack or chip during transportation, installation, or daily use.

5' One-Piece Shower

Product Code: **S6037**



Exterior Dimensions:

60" x 37 1/4"

Threshold Height:

6"

Above Floor Rough:

2 1/4"

Fiberglass shower stalls need to be durable, easy to install, and resistant to wear and tear. That's what EverFab can offer. With our S6037 5-five foot shower stall unit, you'll find a one-piece model that can fit into a variety of residential settings and will reliably maintain its pristine white gel coat finish for years to come.

3' Shower Pan WITH UNIQUE RETURN FLANGE

Product Code: **SP3937RFB**



Exterior Dimensions:

39 ½" X 37 ¼"

Clear Floor Space:

36" x 36"

Threshold Height:

3 ¾"

ANSI Type B compliant shower base that includes a unique return flange allows for parallel or perpendicular drywall approaches.

3 ½' Roll-In Shower Pan

Product Code: **SP4551A**



Exterior Dimensions:

44 ¾" X 51"

Clear Floor Space:

42 ¾" x 48 ½"

Threshold Height:

1 ½", 1", or ¼" no-recess

California Title 24 compliant shower base for use in applications where tile or another type of wall surround is used.

5' Roll-In Shower Pans

Product Code: **SP6236A**



Exterior Dimensions:

62" X 36"

Clear Floor Space:

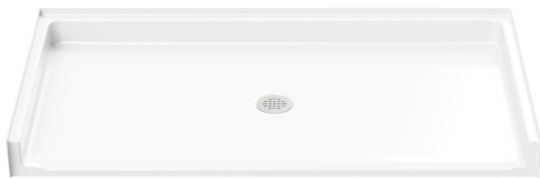
60" x 34"

Threshold Height:

1 ½", 1", or ¼" no-recess

ADA compliant shower base that comes in various threshold heights to suit any requirements needed.

Product Code: **SP6332A**



Exterior Dimensions:

63" X 31 ½"

Clear Floor Space:

60" x 30"

Threshold Height:

1 ½", 1", or ¼" no-recess

Another ADA compliant shower base that as always includes EverFab's unique RhinoBottom.

Product Code: **SP6440A**



Exterior Dimensions:

64" X 40 ½"

Clear Floor Space:

61 ½" x 38 ¼"

Threshold Height:

1 ½", 1", or ¼" no-recess

ADA compliant shower base that offers additional depth for added wheelchair space.

5' Roll-in Shower Pan WITH TRENCH DRAIN

Product Code: **SPT6333A**



Exterior Dimensions:

63" X 34 ½"

Clear Floor Space:

60" x 31 ½"

Threshold Height:

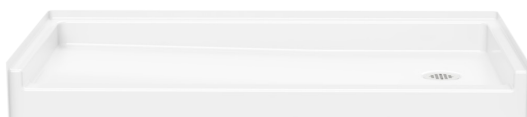
1 ½", 1", or ¼" no-recess

EverFab's first trench drain model.

Available in Q3 of 2025, this shower pan will be great for higher end applications where tile is used.

5' Curbed Shower Pan

Product Code: **SP6032B**



Exterior Dimensions:

60" X 32"

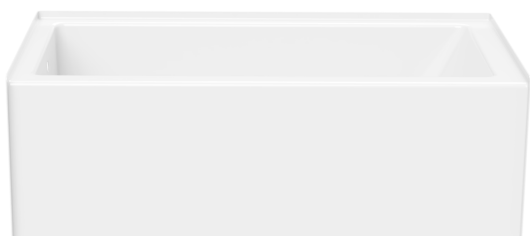
Threshold Height:

3 ⅝"

ANSI Type B compliant shower base available in left and right hand drain configurations.

5' Bathtub

Product Code: **T6032A**



Exterior Dimensions:

60" X 32"

Gallon Capacity:

39

Above Floor:

3"

Modern single-piece bathtub with large bathing well that can be used alongside tile or one of EverFab's multi-piece surrounds. Made with the same durable composite materials as all of EverFab's products. This unit also includes EverFab's trademark RhinoBottom for years of longevity.

4-1/2' Bathtub

Product Code: **T5429A**



Exterior Dimensions:

54" X 30 ¼"

Gallon Capacity:

34

Above Floor Rough:

3"

Modern single-piece bathtub that works especially well on remodel projects with tight spaces.

5' Multi-Piece Showers and Tub-Showers

Product Code: **TSS5429MA**



Exterior Dimensions:

36"x 37 1/4"

Gallon Capacity:

34

Above Floor:

3"



TSS5429MA0



TSS5429MA1

EverFab expanded its multi-piece remodel offering with this 54" wide tub shower that is great for tight spaces.

Product Code: **TS6032MA**



Exterior Dimensions:

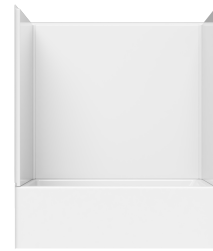
60" X 32"

Gallon Capacity:

39

Above Floor:

3"



TS6032MA0



TS6032MA1

EverFab's original multi-piece shower that is used primarily in remodel projects. This unit is reinforced like all of EverFab's products for ADA compliance.

Product Code: **TSS6032MA**



Exterior Dimensions:

60" X 32"

Gallon Capacity:

39

Above Floor Rough:

3"



TSS6032MA0



TSS6032MA1

This 60" wide tub shower stall features a molded shelf on the back wall. It is reinforced and tested for compliance with major accessibility codes.

Product Code: **SS6032MB**



Exterior Dimensions:

60" x 32"

Threshold Height:

3 5/8"

Specifically designed for remodels where a tub or tub shower combo is removed and replaced with a shower.

EVERFAB ACCESSORIES



Put the finishing touches on your bathroom design.

RUBBER SHOWER DAM

Product Code: **EF-0000-SG**



60" Cut-to-Length

Collapsible cut-to-length rubber dam to retain water in barrier free showers

T-SHAPED EVERDAM

Product Code: **EF-0060-ED**



60" Cut-to-Length

Collapsible, easy to install, and compatible with EverFab roll-in and transfer showers

SHOWER DRAIN

Product Code: **EF-0000-DA**

Drain Assembly

Shower drain with no-caulk compression gasket — available in brass body and stainless steel strainer



ADA COMPLIANT SEATS

Product Code: **See Submittals**

Foldable Seats

Foldable ADA compliant seat that supports up to 1500 pounds — available in satin stainless steel and chrome finishes

L-Shaped Seat



Standard Seat



ADA COMPLIANT GRAB BARS

Product Code: **See Submittals**

Standard Thru-bolted

ADA compliant grab bars. Available with flanges for in-field installation or without flanges as factory installed. Grab bars come with standard satin stainless steel finish, but other finishes and styles are available upon request.



SHOWER CURTAIN AND CURTAIN ROD

Product Code: **See Submittals**



Thru-bolted Assembly

Through-bolted flange-less curtain rod with optional 10 gauge shower curtain and rings — available in satin stainless steel or chrome finishes. EverFab's curtains and curtain rods are designed for the wear and tear brought on by commercial use.

SOAP DISH

Product Code: **EF-0000-SD**

Stainless Steel Soap Dish

Recessed soap dish to comply with ADA protrusion requirements. Included subtle metal lip to prevent drops — available in various finishes



EVERFAB BATHBRITE

Gallon:

EF-0004-BB

Quart:

EF-0012-BB

Concentrated Cleaner

Concentrated cleaner for use with fiberglass, ceramic, acrylic, and almost any other hard service. Available on Amazon.

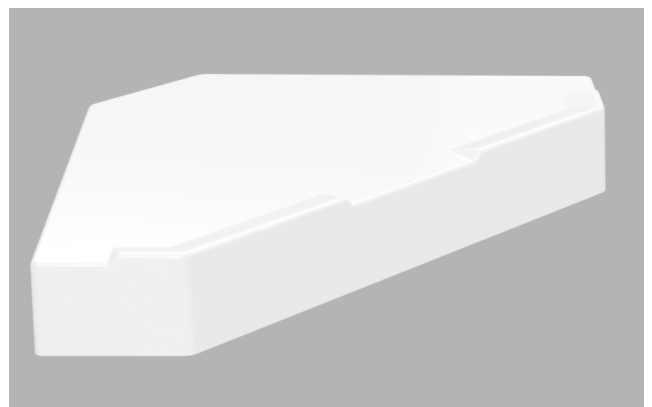


COMPOSITE CORNER SHELF

Product Code: **EF-0000-CCS**

Field-installed Soap Dish

Made of the same material as the rest of the shower for a seamless blend. Strong enough to support large soap and shampoo bottles.



EVERFAB

PO Box 490, Aumsville, OR 97325
Phone: 503-303-3300 | Fax: 503-743-8153
www.everfabbath.com

