

EVERFAB



PRODUCT CATALOG

everfabbath.com | 503-303-3300





THE **EVERFAB** ADVANTAGE

Who We Are & What We Do	9
Innovative Shower Construction	13
The EverFab RhinoBottom™	15
Strength Test Results	16
Shipping & Storage	19
Additional Resources	21
Revit files	21
Custom Products	21
3D Printed Models	21
Product Code Guide	22
Products	24
Accessories	59

PRODUCTS BY TYPE

Roll-in Showers

5' Roll-In Shower	62" x 36"	S6236TA	25
5' Roll-In Shower	63" x 34"	S6334A	26
5' Roll-In Shower	63" x 36"	S6336A	27
5' Roll-In Shower with Simulated Tile	63" x 36"	S6336TA	28
5' Roll-In Shower	63" x 39"	S6339A	29
5' Roll-In Shower with Simulated Tile	63" x 39"	S6339TA	30
5' Alternate Roll-In Shower	63" x 39"	S6339RWA	31
5' Alternate Roll-In with Simulate Tile	63" x 39"	S6339RWTA	32
5' Roll-In Shower with Shelf	63" x 38"	SS6338A	33
3 ½' Roll-in Shower	44 ¼" x 52"	S4452A	34

Transfer Showers

3' Transfer Shower	38" x 38 ½"	S3839A	35
3' Transfer Shower with Return Flange	38" x 38"	S3838RFA	36
3' Transfer Shower with Return Flange and Shelf	38" x 41 ¾"	SS3842RFA	37
4' Transfer Shower	48" x 38 ¾"	S4839A	38

Adaptable Showers

3' Shower with Return Flange	38 ¼" x 38 ½"	S3839RFB	39
4' Shower with Return Flanges	48" x 36 ¾"	S4836RFB	40
4' Shower with Simulated Tile	50 ¾" x 38 ⅝"	SS5139TB	41
4' Shower with Shelf	51" x 41 ¾"	SS5141B	42
5' Shower With Simulated Tile	60" x 32 ⅝"	SS6033TB	43
5' Shower with Simulated Tile	62" x 38 ⅝"	SS6239TB	44

Shower/Tub Combos and Residential Showers

5' Tub-Shower Unit	60" x 32"	TS6032A	45
5' Tub-Shower Unit with Shelf	60" x 32"	TSS6032A	46
5' Tub-Shower with Simulated Tile	60" x 30"	TS6030T624A	47
5' Tub-Shower with Simulated Tile	60" x 32"	TS6032T624A	48
3' Shower	36" x 37 ¼"	S3637	49
4' Shower	48" x 37 ¼"	S4837	50
5' Shower	60" x 37 ¼"	S6037	51

Multi-Piece Showers and Shower Bases

3' Shower Base with Return Flange	39 ½" x 37 ¼"	SP3937RFB	52
3 ½' Roll-In Shower Base	44 ¾" x 51"	SP4551A	53
5' Roll-In Shower Base	62" x 36"	SP6236A	54
5' Roll-In Shower Base	63" x 32 ½"	SP6332A	55
5' Roll-In Shower Base	64" x 40 ½"	SP6440A	56
5' Bathtub	60" x 32"	T6032A	57
5' Multi-Piece Tub Shower	60" x 32"	TS6032MA	58

PRODUCTS BY SIZE

3' Showers

3 ½' Roll-in Shower	52" x 44 ¼"	S4452A	34
3' Transfer Shower	38" x 38 ½"	S3839A	35
3' Transfer Shower with Return Flange	38" x 38"	S3838RFA	36
3' Transfer Shower with Return Flange and Shelf	38" x 41 ¾"	SS3842RFA	37
3' Shower with Return Flange	38 ¼" x 38 ½"	S3839RFB	39
3' Shower	36" x 37 ¼"	S3637	49
3' Shower Base with Return Flange	39 ½" x 37 ¼"	SP3937RFB	52
3 ½' Roll-In Shower Base	44 ¾" x 51"	SP4551A	53

4' Showers

4' Transfer Shower	48" x 38 ¾"	S4839A	38
4' Shower with Return Flanges	48" x 36 ¾"	S4836RFB	40
4' Shower with Simulated Tile	50 ¾" x 38 ⅝"	SS5139TB	41
4' Shower with Shelf	51" x 41 ¾"	SS5141B	42
4' Shower	48" x 37 ¼"	S4837	50

5' Showers

5' Roll-In Shower	62" x 36"	S6236TA	25
5' Roll-In Shower	63" x 34"	S6334A	26
5' Roll-In Shower	63" x 36"	S6336A	27
5' Roll-In Shower with Simulated Tile	63" x 36"	S6336TA	28
5' Roll-In Shower	63" x 39"	S6339A	29
5' Roll-In Shower with Simulated Tile	63" x 39"	S6339TA	30
5' Alternate Roll-In Shower	63" x 39"	S6339RWA	31
5' Alternate Roll-In Shower with Simulate Tile	63" x 39"	S6339RWTA	32
5' Roll-In Shower with Shelf	63" x 38"	SS6338A	33
5' Shower With Simulated Tile	60" x 32 ⅝"	SS6033TB	43
5' Shower with Simulated Tile	62" x 38 ⅝"	SS6239TB	44
5' Shower	60" x 37 ¼"	S6037	51
5' Roll-In Shower Base	62" x 36"	SP6236A	54
5' Roll-In Shower Base	63" x 32 ½"	SP6332A	55
5' Roll-In Shower Base	64" x 40 ½"	SP6440A	56

Tub/Showers

5' Tub-Shower	60" x 32"	TS6032A	45
5' Tub-Shower with Shelf	60" x 32"	TSS6032A	46
5' Tub-Shower with Simulated Tile	60" x 32"	TS6032T624A	47
5' Tub-Shower with Simulated Tile	60" x 30"	TS6030T624A	48
5' Bathtub	60" x 32"	T6032A	57
5' Multi-Piece Tub Shower	60" x 32"	TS6032MA	58

PRODUCTS BY CODE

ANSI Type A and ADA

5' Roll-In Shower	62" x 36"	S6236TA	25
5' Roll-In Shower	63" x 34"	S6334A	26
5' Roll-In Shower	63" x 36"	S6336A	27
5' Roll-In Shower with Simulated Tile	63" x 36"	S6336TA	28
5' Roll-In Shower	63" x 39"	S6339A	29
5' Roll-In Shower with Simulated Tile	63" x 39"	S6339TA	30
5' Alternate Roll-In Shower	63" x 39"	S6339RWA	31
5' Alternate Roll-In with Simulate Tile	63" x 39"	S6339RWTA	32
5' Roll-In Shower with Shelf	63" x 38"	SS6338A	33
3' Transfer Shower	38" x 38 ½"	S3839A	35
3' Transfer Shower with Return Flange	38" x 38"	S3838RFA	36
3' Transfer Shower with Return Flange and Shelf	38" x 41 ¾"	SS3842RFA	37
5' Tub-Shower Unit	60" x 32"	TS6032A	45
5' Tub-Shower Unit with Shelf	60" x 32"	TSS6032A	46
5' Tub-Shower with Simulated Tile	60" x 30"	TS6030T624A	47
5' Tub-Shower with Simulated Tile	60" x 32"	TS6032T624A	48
5' Roll-In Shower Base	62" x 36"	SP6236A	54
5' Roll-In Shower Base	63" x 32 ½"	SP6332A	55
5' Roll-In Shower Base	64" x 40 ½"	SP6440A	56
5' Bathtub	60" x 32"	T6032A	57
5' Multi-Piece Tub Shower	60" x 32"	TS6032MA	58

ANSI Type B & FHA

3' Shower with Return Flange	38 ¼" x 38 ½"	S3839RFB	39
4' Shower with Return Flanges	48" x 36 ¾"	S4836RFB	40
4' Shower with Simulated Tile	50 ¾" x 38 ⅝"	SS5139TB	41
4' Shower with Shelf	51" x 41 ⅜"	SS5141B	42
5' Shower With Simulated Tile	60" x 32 ⅝"	SS6033TB	43
5' Shower with Simulated Tile	62" x 38 ⅝"	SS6239TB	44
5' Tub-Shower Unit	60" x 32"	TS6032A	45
5' Tub-Shower Unit with Shelf	60" x 32"	TSS6032A	46
5' Tub-Shower with Simulated Tile	60" x 30"	TS6030T624A	47
5' Tub-Shower with Simulated Tile	60" x 32"	TS6032T624A	48
3' Shower Base with Return Flange	48" x 37 ½"	SP3937RFB	53
5' Multi-Piece Tub Shower	60" x 37 ¼"	TS6032MA	58

PRODUCTS BY CODE

Washington Administrative Code (WAC)

5' Roll-In Shower	62" x 36"	S6236TA	25
5' Roll-In Shower	63" x 36"	S6336A	27
5' Roll-In Shower with Simulated Tile	63" x 36"	S6336TA	28
5' Roll-In Shower	63" x 39"	S6339A	29
5' Roll-In Shower with Simulated Tile	63" x 39"	S6339TA	30
5' Alternate Roll-In Shower	63" x 39"	S6339RWA	31
5' Alternate Roll-In with Simulate Tile	63" x 39"	S6339RWTA	32
5' Roll-In Shower with Shelf	63" x 38"	SS6338A	33
3 ½' Roll-in Shower	52" x 44 ¼"	S4452A	34
4' Transfer Shower	48" x 38 ¾"	S4839A	38
3 ½' Roll-In Shower Base	44 ¾" x 51"	SP4551A	53
5' Roll-In Shower Base	62" x 36"	SP6236A	54

California Title 24

5' Roll-In Shower	62" x 36"	S6236TA	25
5' Roll-In Shower	63" x 34"	S6334A	26
5' Roll-In Shower	63" x 36"	S6336A	27
5' Roll-In Shower with Simulated Tile	63" x 36"	S6336TA	28
5' Roll-In Shower	63" x 39"	S6339A	29
5' Roll-In Shower with Simulated Tile	63" x 39"	S6339TA	30
5' Alternate Roll-In Shower	63" x 39"	S6339RWA	31
5' Alternate Roll-In with Simulate Tile	63" x 39"	S6339RWTA	32
5' Roll-In Shower with Shelf	63" x 38"	SS6338A	33
3 ½' Roll-in Shower	52" x 44 ¼"	S4452A	34
5' Tub-Shower Unit	60" x 32"	TS6032A	45
5' Tub-Shower Unit with Shelf	60" x 32"	TSS6032A	46
5' Tub-Shower with Simulated Tile	60" x 30"	TS6030T624A	47
5' Tub-Shower with Simulated Tile	60" x 32"	TS6032T624A	48
3 ½' Roll-In Shower Base	44 ¾" x 51"	SP4551A	53
5' Roll-In Shower Base	62" x 36"	SP6236A	54
5' Roll-In Shower Base	63" x 32 ½"	SP6332A	55
5' Roll-In Shower Base	64" x 40 ½"	SP6440A	56
5' Multi-Piece Tub Shower	60" x 32"	TS6032MA	58

ACCESSORIES

Rubber Dam	60
EverDam	60
Shower Drain	60
Seats	61
Grab Bars	62
Curtains and Rods	65
Composite Corner Shelf	66
Stainless Steel Soap Dish	66
EverFab Bathbrite	66



THE EVERFAB

ADVANTAGE



WHO IS EVERFAB AND WHY DO WE DO WHAT WE DO?

We are a leading manufacturer of accessible fiberglass showers. With over 75 years of combined experience in the shower manufacturing market, our team of professional craftsmen is committed to bringing the highest level of artistry and excellence to every project we work on. We care about our customers and strive to create the kind of hand-made, durable, and accessible showers that you can rely on for years to come.

“

We started EverFab with a vision that we would never compromise on quality.

We strive to be world class in everything we do by hiring the best people, building the best product, and providing the best customer experience. This vision and dedication to excellence continue to push us to deliver the exceptional results that our customers expect.”



DAN BRYAN, CEO
EVERFAB

WHAT IS THE

EVERFAB

ADVANTAGE?

STRENGTH TESTED:

Our units support at least 2x the weight required by the 2010 Americans with Disabilities Act Standards for Accessible Design.

COMPLIANT:

The EverFab product catalog offers a variety of accessibility code-compliant models for all your bathroom design needs.

ON-TIME DELIVERY:

Partnering with EverFab means being confident that your product will arrive on time and in perfect condition.

30-YEAR WARRANTY:

We're so confident in our products' quality and durability that we offer a guarantee that every unit will be free from any defects in material or craftsmanship for up to 30 years.

ARCHITECT-FRIENDLY REVIT FILES:

Thanks to our partnership with leading BIM creators, we can offer Revit files and parametric models that make it easier than ever before to design the product you need.

Composite Construction:

We reinforce our units using a unique composite core material unlike anyone else in the market. It means our showers are lighter, stronger, and more durable than those built with wood.

EverFab RhinoBottom:

We support our showers like nobody else out there using a composite floor plate we call the RhinoBottom. It's as strong as it sounds and eliminates the need for a mortar base during installation.



“

Gelcoat products have been a real challenge for us over the past few years. From product quality, to lead times, to customer service, the manufacturers in our market have been on a downhill slide.

Needless to say, we'd been looking for change and we were very excited about the opportunity Everfab brought to the table with their entrance to the market. They honestly couldn't be more different than what we were used to.

We know we've got a real partner in Everfab.

A partner who views their work as what it is, a craft. A partner who understands and values the relationship of all stakeholders in the supply chain. A partner we can be confident building our business with.”

NATHAN BERRY, GENERAL MANAGER
HAJOCA CORP. DBA INLAND SUPPLY

HAJOCA
— SINCE 1858 —

INNOVATIVE SHOWER CONSTRUCTION

We're the only manufacturer that constructs fiberglass showers the way we do. We're confident that our high quality materials and unique composite structure will deliver an advantage to our customers that they couldn't gain any other way.

GEL COAT FINISH

An extra thick polyester gel coat prevents print through which occurs when texture from the other composite layers can be seen and felt on the interior finish of the tub or shower.

MULTIPLE FIBERGLASS LAYERS

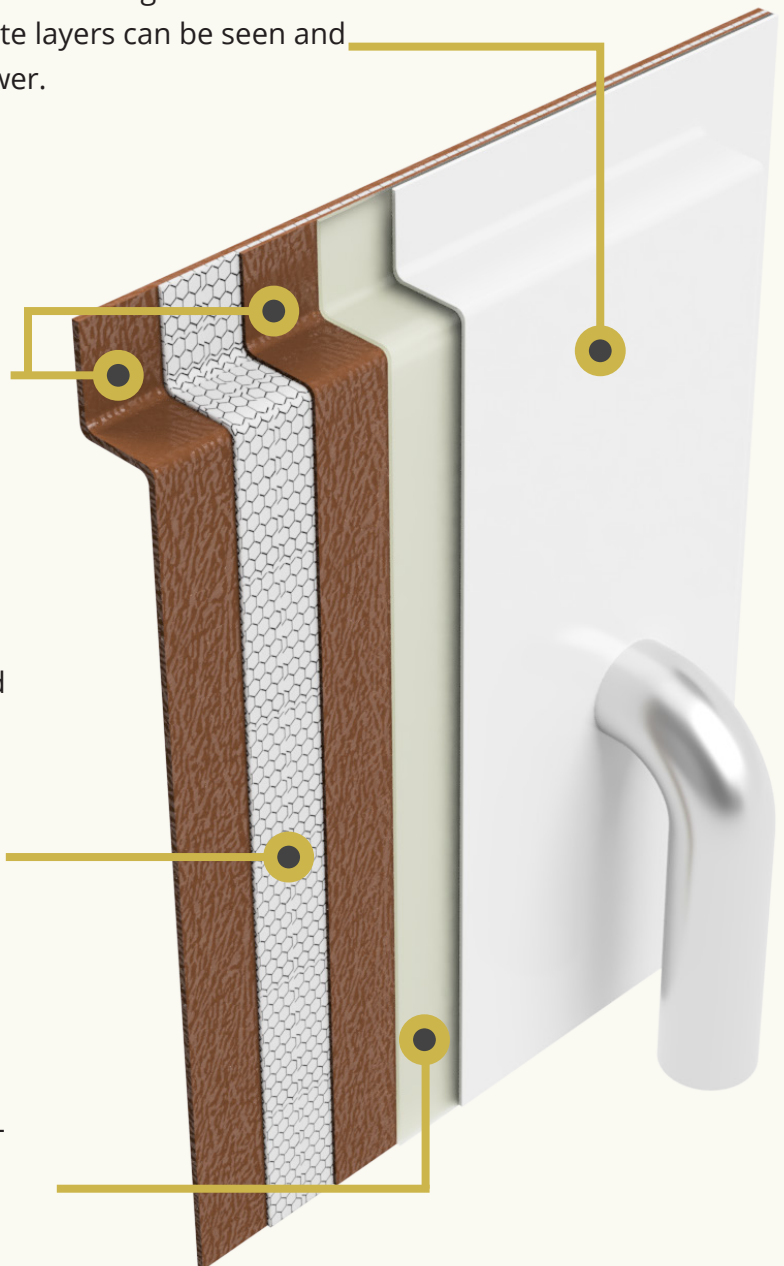
Our composite contains more fiberglass and less calcium sulfate than most other manufacturers which leads to strong units that won't crack or break during installation or over time with continual use. Each fiberglass layer is rolled on by hand which allows for a stronger cure and smoother handling.

EVERFAB CORE MATERIAL

Virtually everyone uses wood or cardboard to reinforce their units. Unlike organic materials, our core material absorbs the fiberglass resin allowing the layers to fully bond preventing separation down the road. Along with better performance, our showers weigh half as much as those reinforced with wood.

SPRAY CORE

This material adds another layer of protection to ensure the gel coat is smooth and resistant to damage



“

I like how strong the EverFab showers are and the ease of installation.

KURT S., PROJECT MANAGER
TAPANI PLUMBING



“

I'm converting anyone I can to EverFab.

I think it's the best product out there

right now for the money in our area. They build stout units.”

ANDREY B., PROJECT MANAGER
VICON MECHANICAL CONTRACTOR





rhinobottom

by EverFab



Bottom cracking is the number one failure point in the industry. That's why we've made it our number one priority.



It's constructed using the same composite material as the rest of the shower, and then laminated on. That means it won't break off like PVC legs or rot and sag over time like wood.



Plus, it's pre-leveled and diamond cut on a custom machine in our factory to eliminate further labor on the job site like mortar beds and trimming.

THERE'S NOTHING ELSE LIKE THE EVERFAB RhinoBottom™ ON THE MARKET.



4 Foot Shower Stall



5 Foot Roll-in Shower Stall



5 Foot Tub Shower



STRENGTH TEST RESULTS

Carlson Testing Inc (CTI)
found the following during
the evaluation of EverFab units.

Both factory and field-in-
stalled grab bars
support a minimum of

250 lbs

Factory grab bars won't
fail until

1505 lbs

Factory-installed seats
support at least

1000 lbs



The EverFab units support 2x the
weight required by the 2010 Ameri-
can with Disabilities Act Standards
for Accessible Design

WHERE DOES THE STRENGTH COME FROM?

EverFab Core Material

- Eliminates warping and waving of fixture walls
- Finished fixtures are as much as 50% lighter than plywood-backed units without a reduction in strength
- Similar materials are used to reinforce other fiberglass products such as boat hulls and wind turbine blades, but we're the only manufacturer to use it in showers.

Why not Wood or Cardboard?

- Both materials don't allow the fiberglass layers to bond together which can lead to separation and peeling
- Manufacturers often use wood or cardboard because they are cheaper and less labor-intensive
- Wood and cardboard-backed fixtures can swell and distort when rained or snowed on while being stored outside
- Wood-backed fixtures are heavy and often require multiple individuals to maneuver and install

“

We had a great experience with EverFab.

The products they shipped us were very well protected and seamless to install.”

JOHN G., GENERAL MANAGER
JET MECHANICAL



SHIPPING & STORAGE

Our goal is to make it so our customers can be 100% confident that the product they order will arrive on time and in nothing less than flawless condition. **We know how important maintaining a schedule is, so we're committed to doing everything we can to ensure every order is delivered exactly when and where you need it.**



Where other shower units will warp, fade, or begin to rot when left outside, EverFab's models are made out of non-organic materials and are perimeter reinforced during shipping and storage.

This means our units will maintain their finish and quality for months or years, even if stored outside.



Perimeter crated to protect the skirt, apron, and flanges.



Wood board on the back of low-profile models prevents the drain and shower floor from sitting directly on the ground during shipping and storage.



The diagonal board is used on 5-foot shower stalls for added protection.

“

I have had the pleasure of working with the Everfab team for many years.

The quality of their fiberglass units remains second to none while they continue to get us product in a timely manner.

Everfab is our first choice on our design-build projects as we know from history that they stand firmly behind their product and are ready to assist us in any way they can.”

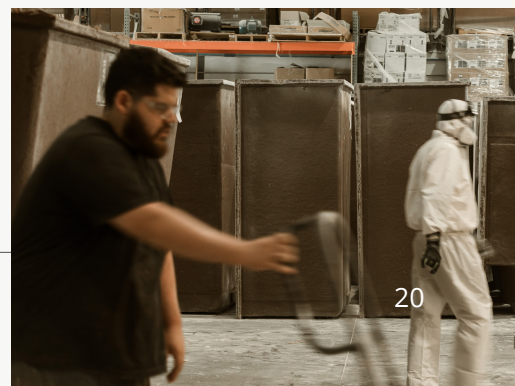
BRIAN STEWART, PRESIDENT
STEWART MECHANICAL



“

We can't imagine using any other supplier than EverFab.”

DOUG T.
MISSION SENIOR LIVING



ADDITIONAL **RESOURCES**



REVIT FILES

We've partnered with leading BIM creators and now offer simple and easy-to-use Revit families. These include parametric models with customizable grab bar and seat configurations to meet various accessibility code requirements.



CUSTOM PRODUCTS

We offer a wide variety of shower units that can fit into just about any design or layout. But if you can't find a model that checks all of your boxes, our team of professional craftsmen will work with you to create a customized solution that will.



3D PRINTED MODELS

Need help getting a client to visualize your design ideas? When you work with EverFab, we will turn your design into a 3D model and have it shipped to your client's doorstep within 7 days. This way, your client can easily visualize your design and you can ensure it will satisfy their needs. With our 3D printed models, you can gain full confidence in our products prior to purchasing.

PRODUCT CODE

S 3 8 3 9 A

This 4-digit number indicates the approximate overall **width and depth of the unit**. For example, this code represents a shower that is 38" wide by 39" deep.

The letters following the 4 digit size code further describe the unit:

A - ADA Adaptable
A - ANSI Type B Adaptable
T - simulated tile design.
Several digits following the T indicate the tile size
RW or RF - unit includes a return wall or return flange

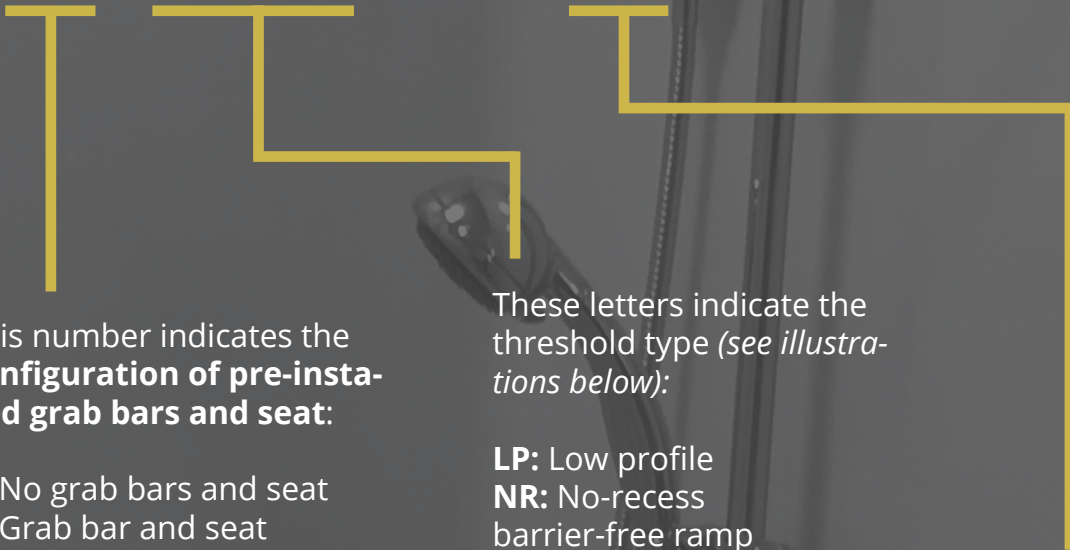
The initial letters indicate the unit type:

TS - tub shower
S - shower stall
T - bathtub only
SP - shower pan

An additional '**S**' following any of the type letters above indicates the unit includes a shelf



1 L P - R



This number indicates the **configuration of pre-installed grab bars and seat**:

- 0:** No grab bars and seat
- 1:** Grab bar and seat
- 2:** Grab bar only
- 3:** Grab bar and seat configuration that meets ANSI A117.1 Type A roll-in shower accessibility requirements

These letters indicate the threshold type (*see illustrations below*):

- LP:** Low profile
- NR:** No-recess barrier-free ramp
- Blank:** Standard threshold height

This letter indicates seat placement for showers or drain placement for tub showers. **'L'** stands for **left placement** and **'R'** stands for **right placement** when standing outside looking into the shower enclosure.



1/4" No-Recess Barrier Free Ramp



5/8" Low Profile



1 5/8" Standard

EVERFAB PRODUCTS



We meticulously sculpt and construct each model by hand to ensure our customers have durable showers they can comfortably rely on for years to come.

5' Roll-In Shower



S6236TA0



S6236TA2



S6236TA1



S6236TA3

Product Code:

S6236TA

Exterior Dimensions: 62" X 36"

Approx. Weight: 140 lbs.

Clear Floor Space: 60" x 33 3/4"

Threshold Height:

Available in 1 1/2", 1", or 1/4" no-recess

Compliance and certifications



ANSI



Washington Administrative Code



This one-piece fiberglass ADA roll-in shower is constructed from two layers of a hand-rolled, fiberglass-reinforced composite, and includes 12 inch x 24 inch simulated tiles. The S6236TA is a durable, crack-resistant, ANSI Type A, California Title 24, and ADA compliant shower that can be easily installed in various bathroom layouts and designs.

5' Roll-In Shower



S6334A0



S6334A2



S6334A1



S6334A3

Product Code:

S6334A

Clear Floor Space: 60" x 31 1/4"

Threshold Height:

Available in 1 5/8", 1", or 1/4" no-recess

Compliance and certifications



ANSI



Exterior Dimensions: 63" x 34"

 Approx. Weight: 140 lbs.

This one-piece fiberglass ADA roll-in shower is constructed from two layers of a hand-rolled, fiberglass-reinforced composite, an intermediate layer of polyester spray core, and an unsaturated polyester gel coat finish. The S6334A is a durable, crack-resistant, ANSI Type A, California Title 24, and ADA compliant shower that can be easily installed in various bathroom layouts and designs.

5' Roll-In Shower



S6336A0



S6336A2



S6336A1



S6336A3

Product Code:

S6336A

Clear Floor Space: 60" x 33 1/4"

Threshold Height:

Available in 1 5/8", 1", or 1/4" no-recess

Compliance and certifications



ANSI



Washington
Administrative
Code



Exterior Dimensions: 63" x 36"

 **Approx. Weight: 150 lbs.**

The S6336A one-piece fiberglass roll-in shower stall is ANSI Type A, CA Title 24, Washington Administrative Code (WAC), and ADA compliant shower stall is durable, crack and chip resistant, and can be easily installed in commercial and residential environments.

5' Roll-In Shower WITH SIMULATED TILE



S6336TA0



S6336TA2



S6336TA1



S6336TA3

Product Code:
S6336TA

Clear Floor Space: 60" x 33 3/8"

Threshold Height:
Available in 1 1/2", 1", or 1/4" no-recess

Compliance and certifications



ANSI



Washington
Administrative
Code



Exterior Dimensions: 63" X 36"

 Approx. Weight: 140 lbs.

The S6336TA is a one-piece roll-in type shower stall with simulated 12" x 24" tile design. It is compliant with all major accessibility codes, including the Universal Plumbing Code, IAPMO, ADA, ANSI, California Title 24, and Washington Administrative Code. The stylish tile design makes it an aesthetically pleasing and practical addition to just about any bathroom design.

5' Roll-In Shower



S6339A0



S6339A2



S6339A1



S6339A3

Product Code:

S6339A

Clear Floor Space: 60 1/4" x 36 3/8"

Threshold Height:

Available in 1 5/8", 1", or 1/4" no-recess

Exterior Dimensions: 63" X 39"

 Approx. Weight: 155 lbs.

The S6339A one-piece fiberglass roll-in shower stall is compliant with ANSI, CA Title 24, Washington Administrative Code (WAC), and ADA standards. It is durable, crack and chip resistant, and can be easily installed in commercial and residential environments.

Compliance and certifications



ANSI



Washington
Administrative
Code



5' Roll-In Shower WITH SIMULATED TILE



S6339TA0



S6339TA2



S6339TA1



S6339TA3

Product Code:
S6339TA

Clear Floor Space: 60 1/4" X 36 3/8"

Threshold Height:
Available in 1 5/8", 1", or 1/4" no-recess

Compliance and certifications



ANSI



Exterior Dimensions: 63" X 39"

 Approx. Weight: 160 lbs.

The S6339TA fiberglass roll-in shower stall is fully reinforced with EverFab's unique composite core material which allows for factory or field installation of ADA compliant grab bars and seat. It is fully compliant with ADA, ANSI Type A, CA Title 24, and WAC. This unit includes 12 inch x 24 inch simulated tile.

5' Alternate Roll-In Type Shower



S6339RWA0

S6339RWA1

Product Code:
S6339RWA

Exterior Dimensions: 63" X 39"

 Approx. Weight: 175 lbs.

Clear Floor Space: 60 1/4" X 36 3/8"

Threshold Height:
Available in 1 1/2", 1", or 1/4" no-recess

The S6339RWA is an alternate roll-in type shower with EverFab's RhinoBottom and anti-slip floor. It meets ADA, ANSI, and California Title 24 requirements and is reinforced for installation of an ADA compliant grab bar and seat.

Compliance and certifications



ANSI



Washington
Administrative
Code



5' Alternate Roll-In Shower

WITH SIMULATED TILE



Product Code:
S6339RWT A

Exterior Dimensions: 63" X 39"

Approx. Weight: 175 lbs.

Clear Floor Space: 60 1/4" X 36 3/8"

Threshold Height:
 Available in 1 1/2", 1", or 1/4" no-recess

Compliance and certifications



The S6339RWT A is a two-piece alternate roll-in type shower stall with stylish simulated 12" x 24" tile. It is available in left or right hand configuration and fully reinforced with EverFab's unique composite core material which allows for factory or field installation of ADA compliant grab bars and seat.

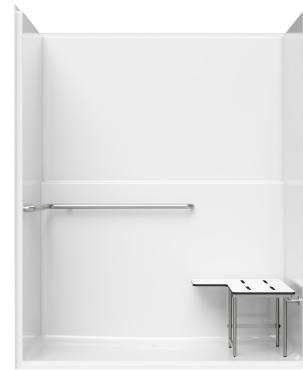
5' Roll-In Shower WITH SHELF



SS6338A0



SS6338A2



SS6338A1



SS6338A3

Product Code:
SS6338A

Clear Floor Space: 60" x 32 1/8"

Threshold Height:
Available in 1 1/2", 1", or 1/4" no-recess

Compliance and certifications



ANSI



Exterior Dimensions: 63" X 38"

 Approx. Weight: 145 lbs.

The SS6338A one-piece fiberglass roll-in shower stall is constructed of two distinct layers of fiberglass reinforced composite, reinforced with an intermediate layer of polyester spray core, and finished with an unsaturated polyester gel coat. This shower stall is compliant with ANSI, CA Title 24, Washington Administrative Code (WAC), and ADA standards.

3 1/2' Roll-in Shower



S4452A0



S4452A1



S4452A3

Product Code:

S4452A

Clear Floor Space: 42" x 49 5/8"

Threshold Height:

Available in 1 3/8" or 3/4"

Compliance and certifications



Exterior Dimensions: 44 1/4" x 52"

 **Approx. Weight: 165 lbs.**

Constructed from two layers of fiberglass reinforced composite, and supported by an additional layer of polyester sprat core, this transfer shower stall is reliably durable and can be easily installed in commercial and residential settings. The S4452A is designed to be a roll-in shower stall that complies with California Title 24 requirements and is built with the reinforcement needed for ADA compliant grab bars and shower seats.

3' Transfer Shower



S3839A0



S3839A1

Product Code:
S3839A

Clear Floor Space: 36" x 36"

Threshold Height:
Available in 1 3/8" or 5/8"

Compliance and certifications



ANSI



Exterior Dimensions: 38" x 38 1/2"

 Approx. Weight: 120 lbs.

The S3839A fiberglass transfer shower stall offered by EverFab is constructed from two separate layers of fiberglass reinforced composite, a polyester spray layer, and an unsaturated polyester gel coat finish that helps prevent cracks, chips, and other damage. With added reinforcement built into the design, this ANSI and ADA compliant shower stall is easy to install and can fit into a wide variety of bathroom designs and layouts.

3' Transfer Shower WITH RETURN FLANGE



S3838RFA0



S3838RFA1

Product Code:
S3838RFA

Clear Floor Space: 36" x 36"

Threshold Height:
Available in 1 3/8" or 5/8"

Compliance and certifications



ANSI



Exterior Dimensions: 38" x 38"

 Approx. Weight: 120 lbs.

The S3838RFA fiberglass transfer shower stall is constructed from two separate layers of fiberglass reinforced composite, a polyester spray layer, and an unsaturated polyester gel coat finish that helps prevent cracks, chips, and other damage. With added reinforcement built into the design, this ANSI and ADA compliant shower stall is easy to install and can fit into a wide variety of bathroom designs and layouts.

3' Transfer Shower

WITH RETURN FLANGE AND SHELF



SS3842RFA0



SS3842RFA1

Product Code:
SS3842RFA

Exterior Dimensions: 38" x 41 ¾"

 Approx. Weight: 120 lbs.

Clear Floor Space: 36" x 36"

Threshold Height:
Available in 1 ¾" or 5/8"

Compliance and certifications



ANSI



The SS3842RFA fiberglass transfer shower stall is constructed from two separate layers of fiberglass reinforced composite, a polyester spray layer, and an unsaturated polyester gel coat finish that helps prevent cracks, chips, and other damage. It includes a soap ledge on the back wall for extra functionality.

4' Transfer Shower



S4839A0



S4839A1

Product Code:

S4839A

Clear Floor Space: 45" x 36"

Threshold Height:

Available in 1 1/2" or 5/8"

Compliance and certifications



Exterior Dimensions: 48" x 38 3/4"

 Approx. Weight: 135 lbs.

The S4839A model offers a one-piece fiberglass transfer shower stall unit that's compliant with ANSI and Washington Administrative Code (WAC) accessibility standards. Constructed from two layers of fiberglass-reinforced composite and reinforced with an intermediate layer of polyester spray core, this fiberglass transfer shower features remarkable durability and accessibility.

3' Shower WITH RETURN FLANGE



Product Code:
S3839RFB

Clear Floor Space: 36 $\frac{3}{8}$ " x 36 $\frac{1}{2}$ "

Threshold Height: 6"

Compliance and certifications



Exterior Dimensions: 38 $\frac{1}{4}$ " x 38 $\frac{1}{2}$ "

 Approx. Weight: 125 lbs.

The S3839RFB fiberglass transfer shower stall is constructed from two separate layers of fiberglass reinforced composite, a polyester spray layer, and an unsaturated polyester gel coat finish that helps prevent cracks, chips, and other damage. This shower is reinforced to meet ANSI Type B requirements and will support field-installed grab bars or a seat

4' Shower WITH RETURN FLANGES



Product Code:
S4836RFB

Clear Floor Space: 36 1/4" x 45 3/4"

Threshold Height: 4"

Compliance and certifications



ANSI



Exterior Dimensions: 48" x 36 3/8"

 Approx. Weight: 140 lbs.

Constructed with two layers of fiberglass reinforced composite, an intermediate layer of polyester spray core, and an unsaturated polyester gel coat finish, the lightweight design of this one-piece fiberglass shower stall makes it easy to install, FHA compliant, and in line with ANSI Type B accessibility standards.

4' Shower

WITH SIMULATED TILE



Product Code:
SS5139TB

Clear Floor Space: 48" X 36"

Threshold Height: 4"

Compliance and certifications



ANSI



Exterior Dimensions: 50 3/4" x 38 5/8"

 Approx. Weight: 135 lbs.

This one-piece curbed shower with simulated tile is constructed from two layers of a hand-rolled, fiberglass-reinforced composite, an intermediate layer of polyester spray core, and an unsaturated polyester gel coat finish. The 12 inch x 24 inch simulated tile design and twin molded soap ledges offer a combination of class and convenience. EverFab's reinforced bottom plate and unique composite core material meet FHA and ANSI Type B Unit requirements, making this unit a durable choice.

4' Shower WITH SHELF



Product Code:
SS5141B

Clear Floor Space: 48 ½" x 36"

Threshold Height: 3"

Compliance and certifications



ANSI



Exterior Dimensions: 51" x 41 ⅜"

 Approx. Weight: 145 lbs.

This fiberglass one-piece shower unit is constructed out of four layers of material that give it exceptional durability and resistance to cracks, chips, and other damage that can affect the unit's quality. With 48" of clearance in front of the shower and ample standing floor space, this fiberglass one-piece shower unit complies with ANSI Type B accessibility standards.

5' Shower

WITH SIMULATED TILE



Product Code:
SS6033TB

Clear Floor Space: 57 1/4" x 30"

Threshold Height: 4"

Compliance and certifications



Exterior Dimensions: 60" x 32 5/8"

 Approx. Weight: 130 lbs.

The SS6033TB one-piece curbed shower features a simulated 12" x 24" tile design and molded shelves. It is reinforced with EverFab's unique composite core material according to FHA and ANSI Type B Unit requirements.

5' Shower

WITH SIMULATED TILE



Product Code:
SS6239TB

Clear Floor Space: 59 ¼" x 36"

Threshold Height: 4"

Compliance and certifications



ANSI

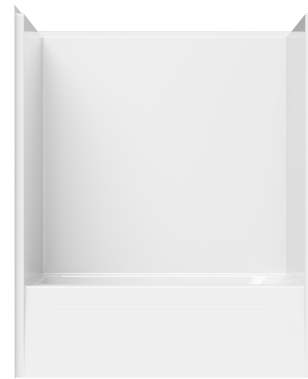


Exterior Dimensions: 62" x 38 5/8"

 Approx. Weight: 145 lbs.

This one-piece curbed shower with simulated tile is constructed from two layers of a hand-rolled, fiberglass-reinforced composite, an intermediate layer of polyester spray core, and an unsaturated polyester gel coat finish. The 12 inch x 24 inch simulated tile design and twin molded soap ledges offer a combination of class and convenience. EverFab's reinforced bottom plate and unique composite core material meet FHA and ANSI Type B Unit requirements, making this unit a durable choice.

5' Tub-Shower



TS6032A0



TS6032A1

Product Code:
TS6032A

Gallon Capacity: 39

Above Floor Rough: 3"

Compliance and certifications



ANSI



Exterior Dimensions: 60" X 32"

 Approx. Weight: 130 lbs.

This one-piece fiberglass shower tub combo unit is designed out of two distinct layers of a hand-rolled, fiberglass-reinforced composite, an intermediate layer of polyester spray core, and an unsaturated polyester gel coat finish. The handmade design of the TS6032A equips it with a level of durability and crack-resistance that sets it apart from other ADA shower tub combo units on the market.

5' Tub-Shower WITH SHELF



TSS6032A0



TSS6032A1

Product Code:
TSS6032A

Gallon Capacity: 39

Above Floor Rough: 3"

Compliance and certifications



ANSI



Exterior Dimensions: 60" x 32"

 Approx. Weight: 135 lbs.

A one-piece tub shower combo unit needs to be built to last, and with the TSS6032A, that's exactly what you'll find. Constructed from two layers of fiberglass reinforced composite and supported by an intermediate layer of polyester spray core, the TSS6032A is a 5-foot tub shower combo unit that's easy to install and will hold up for years to come.

5' Tub-Shower WITH SIMULATED TILE



TS6030T624A0



TS6030T624A1

Product Code:

TS6030T624A

Gallon Capacity: 39

Above Floor Rough: 3"

Compliance and certifications



ANSI



Exterior Dimensions: 60" X 30"

 Approx. Weight: 130 lbs.

This one-piece tub shower stall with simulated tile is constructed from two layers of a hand-rolled, fiberglass-reinforced composite, an intermediate layer of polyester spray core, and an unsaturated polyester gel coat finish. The 6 inch x 24 inch simulated tile offers class and comfort in an ADA compliant design. EverFab's reinforced RhinoBottom and reinforced composite core material make for a sturdy unit that's ideal for placement of grab bars and seat.

5' Tub-Shower WITH SIMULATED TILE



TS6032T624A0



TS6032T624A1

Product Code:

TS6032T624A

Gallon Capacity: 39

Above Floor Rough: 3"

Compliance and certifications



ANSI



Exterior Dimensions: 60" X 32"

 Approx. Weight: 130 lbs.

This one-piece tub shower stall with simulated tile is constructed from two layers of a hand-rolled, fiberglass-reinforced composite, an intermediate layer of polyester spray core, and an unsaturated polyester gel coat finish. The 6 inch x 24 inch simulated tile offers class and comfort in an ADA compliant design. EverFab's RhinoBottom and reinforced composite core material make for a sturdy unit that's ideal for placement of grab bars and seat.

3' One-Piece Shower



Product Code:
S3637

Threshold Height: 6"

Compliance and certifications



Exterior Dimensions: 36" x 37 1/4"

📏 Approx. Weight: 105 lbs.

The S3637 3-foot shower stall unit is the ideal model for a smaller residential bathroom. The model is built from the same four layers of reinforced material that EverFab's one-piece fiberglass shower stall units are known for. This means it comes with reliable durability, easy installation, and a stain-resistant white gel coat finish to preserve the unit's pristine condition.

4' One-Piece Shower



Product Code:
S4837

Threshold Height: 6"

Compliance and certifications



Exterior Dimensions: 48" x 37 1/4"

Approx. Weight: 120 lbs.

Specifically designed for residential use, the S4837 4-foot shower stall unit is constructed out of multiple layers hand-rolled fiberglass, giving it a stronger cure, smoother handling, and increased durability. This residential shower stall is a versatile and easy-to-install unit with a stain-resistant finish that won't crack or chip during transportation, installation, or daily use.

5' One-Piece Shower



Product Code:
S6037

Threshold Height: 6"

Compliance and certifications



Exterior Dimensions: 60" x 37 1/4"

📏 Approx. Weight: 135 lbs.

Fiberglass shower stalls need to be durable, easy to install, and resistant to wear and tear. That's what EverFab can offer. With our S6037 5-five foot shower stall unit, you'll find a one-piece model that can fit into a variety of residential settings and will reliably maintain its pristine white gel coat finish for years to come.

3' Shower Pan WITH UNIQUE RETURN FLANGE



Product Code:
SP3937RFB

Clear Floor Space: 36" x 36"

Threshold Height: 3 3/4"

Compliance and certifications



Exterior Dimensions: 39 1/2" X 37 1/4"

 Approx. Weight: 35 lbs.

ANSI Type B compliant shower base for use in applications where tile or another type of wall surround is used. This shower pan is great for FHA or HUD housing projects.

3 ½' Roll-In Shower Pan



Product Code:
SP4551A

Clear Floor Space: 42 ¾" x 48 ½"

Threshold Height:

Available in 1 ½", 1", or ¾" no-recess

Compliance and certifications



ANSI



Washington
Administrative
Code

Exterior Dimensions: 44 ¾" X 51"

 Approx. Weight: 60 lbs

California Title 24 compliant shower base for use in applications where tile or another type of wall surround is used. This shower pan comes in various threshold heights to suit any requirements demanded by whatever type of flooring or underlayment you choose to use.

5' Roll-In Shower Pan



Product Code:
SP6236A

Clear Floor Space: 60" x 34"

Threshold Height:
Available in 1 ½", 1", or ¼" no-recess

Compliance and certifications



ANSI



Washington
Administrative
Code

Exterior Dimensions: 62" X 36"

 Approx. Weight: 50 lbs.

ADA compliant shower base for use in applications where tile or another type of wall surround is used. This shower pan comes in various threshold heights to suit any requirements demanded by whatever type of flooring or underlayment you choose to use.

5' Roll-In Shower Pan



Product Code:
SP6332A

Exterior Dimensions: 63" X 31 ½"

 **Approx. Weight: 60 lbs.**

Clear Floor Space: 60" x 30"

Threshold Height:
Available in 1 ½", 1", or ¼" no-recess

ADA compliant shower base for use in applications where tile or another type of wall surround is used. Includes EverFab's unique RhinoBottom

Compliance and certifications



ANSI



Washington
Administrative
Code

5' Roll-In Shower Pan



Product Code:
SP6440A

Exterior Dimensions: 64" X 40 1/2"

 **Approx. Weight: 60 lbs.**

Clear Floor Space: 61 1/2" x 38 1/4"

Threshold Height:
Available in 1 1/2", 1", or 1/4" no-recess

ADA compliant shower base for use in applications where tile or another type of wall surround is used. This shower pan comes in various threshold heights to suit any requirements demanded by whatever type of flooring or underlayment you choose to use.

Compliance and certifications

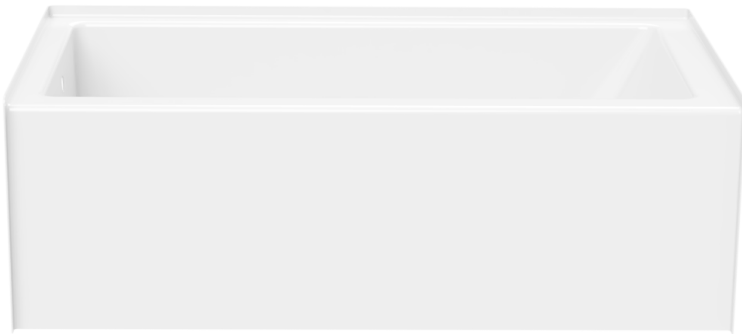


ANSI



Washington
Administrative
Code

5' Bathtub



Product Code:
T6032A

Gallon Capacity: 39

Above Floor Rough: 3"

Compliance and certifications



ANSI

Exterior Dimensions: 60" X 32"

 Approx. Weight: 75 lbs.

Modern single-piece bathtub with large bathing well that can be used alongside tile or one of EverFab's multi-piece surrounds. Made with the same durable composite materials as all of EverFab's products. This unit also includes EverFab's trademark RhinoBottom for years of longevity.

5' Multi-Piece Tub-Shower



Product Code:
TS6032MA

Gallon Capacity: 39

Above Floor Rough: 3"

Compliance and certifications



ANSI



Exterior Dimensions: 60" X 32"

 Approx. Weight: 140 lbs.

EverFab's first multi-piece shower for use with remodel projects. It features EverFab's unique clip connectors that result in a tight seam where the walls join. This unit is reinforced like all of EverFab's products and can be outfitted with grab bars and a seat to become ADA compliant.

EVERFAB ACCESSORIES



Put the finishing touches on your bathroom design.

RUBBER SHOWER DAM

60" Cut-to-Length

Collapsible cut-to-length rubber dam to retain water in barrier free showers

Product Code:
EF-0000-SG



T-SHAPED EVERDAM

60" Cut-to-Length

Collapsible, easy to install, and compatible with all EverFab fiberglass shower units

Product Code:
EF-0060-ED



SHOWER DRAIN

Drain Assembly

Shower drain with no-caulk compression gasket — available in brass body and stainless steel strainer

Product Code:
EF-0000-DA



ADA COMPLIANT SEATS

Foldable ADA compliant seat that supports up to 1000 pounds — available in satin stainless steel and chrome finishes

L-Shaped Seat:

28" x 22 ½"

EF-6334-LS

30" x 22 ½"

EF-6336-LS

32" x 22 ½"

EF-3839-LS

47" x 22 ½"

EF-4452-LS



Standard Seat:

16" x 25"

EF-6032-SS



ADA COMPLIANT GRAB BARS

Factory Installed

ADA compliant grab bars. Available with flanges for in-field installation or without flanges as factory installed — available in satin stainless steel and chrome finishes.

Straight Grab Bar:

12"

EF-0012-SB

18"

EF-0018-SB

24"

EF-0024-SB



U-Shaped Grab Bar:

60" x 28"

EF-6334-UB

60" x 30"

EF-6336-UB



L-Shaped Grab Bar:

28" x 37 1/2"

EF-6334-LB

30" x 37 1/2"

EF-6336-LB

33" x 18"

EF-3839-LB

46" x 19 1/2"

EF-4452-LB



ADA COMPLIANT GRAB BARS

Factory Installed

Straight Grab Bar:

12"

EF-0012-SF

18"

EF-0018-SF

24"

EF-0024-SF



U-Shaped Grab Bar:

60" x 28"

EF-6334-UF

60" x 30"

EF-6336-UF



L-Shaped Grab Bar:

28" x 37 1/2"

EF-6334-LF

30" x 37 1/2"

EF-6336-LF

33" x 18"

EF-3839-LF

46" x 19 1/2"

EF-4452-LF



ADA COMPLIANT ELITE SERIES GRAB BARS

Designer ADA compliant grab bars. Factory installed without flanges — available in chrome and satin stainless finishes

Straight Grab Bar:

12"

EF-0012-SE

18"

EF-0018-SE

24"

EF-0024-SE



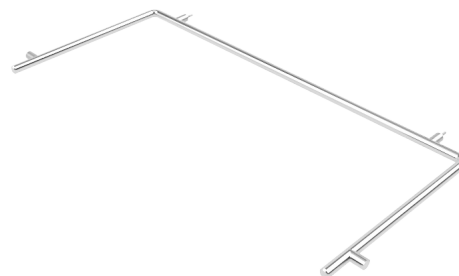
U-Shaped Grab Bar:

60" x 28"

EF-6334-UE

60" x 30"

EF-6336-UE



L-Shaped Grab Bar:

28" x 37 1/2"

EF-6334-LE

30" x 37 1/2"

EF-6336-LE

33" x 18"

EF-3839-LE

46" x 19 1/2"

EF-4452-LE



SHOWER CURTAIN AND CURTAIN ROD

Through-bolted flange-less curtain rod with optional 10 gauge shower curtain and rings — available in satin stainless steel or chrome finishes

Flanged Curtain Rods:

32 ½"

EF-3637-CR

36"

EF-3839-CR

42"

EF-4452-CR

44 ½"

EF-4837-CR

45"

EF-4839-CR

55"

EF-6037-CR

56 ½"

EF-6032-CR

60"

EF-6334-CR

60"

EF-6336-CR

Weighted Shower Curtain:

48" x 72"

EF-3637-SC

48" x 72"

EF-3839-SC

48" x 72"

EF-4452-SC

48" x 72"

EF-4837-SC

48" x 72"

EF-4839-SC

72" x 72"

EF-6037-SC

72" x 72"

EF-6032-SC

72" x 72"

EF-6334-SC

72" x 72"

EF-6336-SC



SOAP DISH

Stainless Steel Soap Dish

Recessed soap dish with metal lip — available in satin stainless steel finish

Product Code:

EF-0000-SD



EVERFAB BATHBRITE

Concentrated cleaner for use with fiberglass, ceramic, acrylic, and almost any other hard service

Gallon:

EF-0004-BB

Quart:

EF-0012-BB



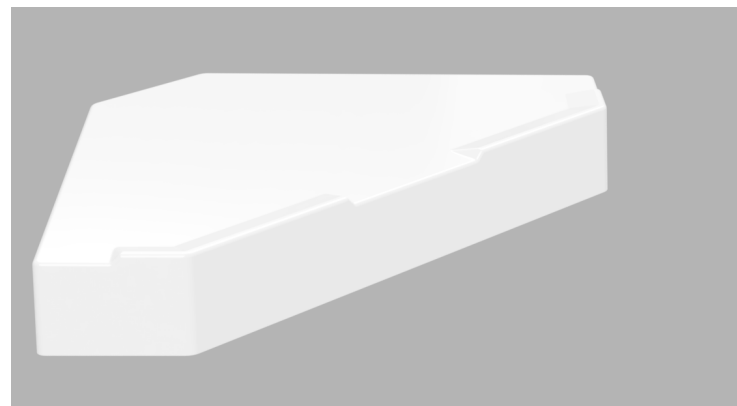
COMPOSITE CORNER SHELF

Field-installed Soap Dish

Made of the same material as the rest of the shower for a seamless blend

Product Code:

EF-0000-CCS



EVERFAB

PO Box 490, Aumsville, OR 97325
Phone: 503-303-3300 | Fax: 503-743-8153
www.everfabbath.com

