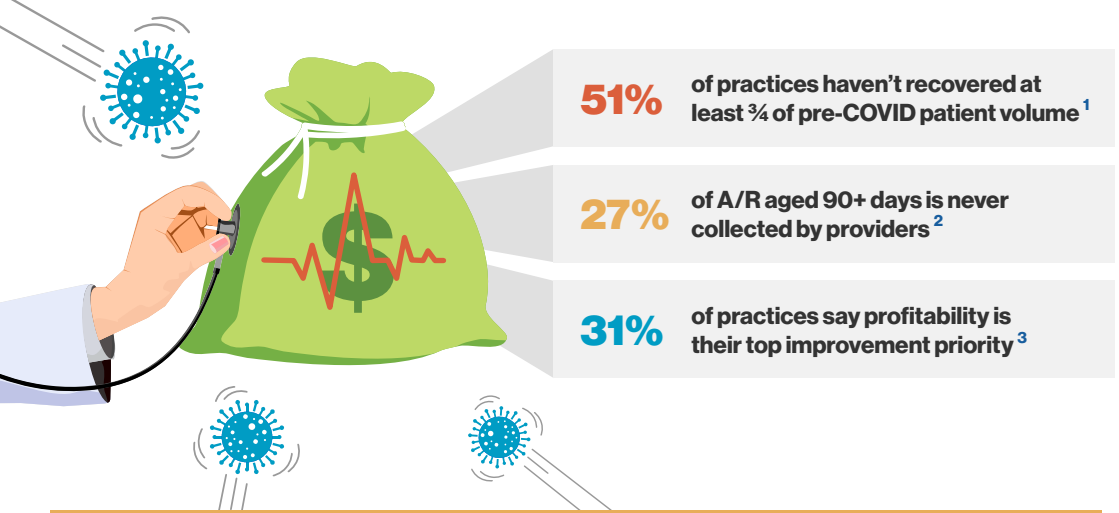
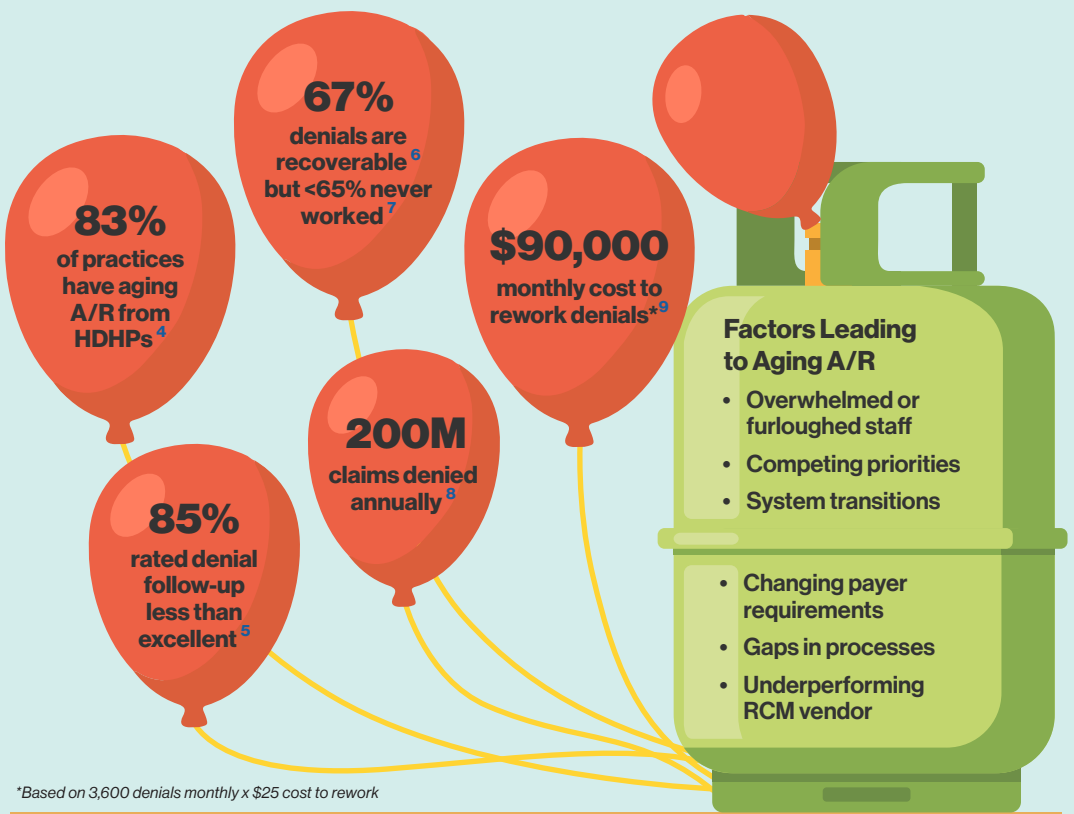


Manage A/R to Capture Every Dollar and Expedite Cash Flow

Returning to pre-COVID revenue is proving challenging for physician practices



A/R ballooning past 60, 90 and 120+ days is costly but common



R1's A/R Management Solution helps you accelerate cash flow
and collect what you're owed

Customized Offering

- ✓ Claim error adjustment
- ✓ Denial prevention and management
- ✓ Appeal Management
- ✓ Recovery of aging A/R
- ✓ Posting and deposit reconciliation
- ✓ Coding and EDI support

Targeted Approach



**Rapid
Implementation**



**Flexible
Timeframe**



**Scalable
Technology and
Resources**



**High-Value
Task Prioritization**

Results

99%

Clean Claims Rate



32-33 days

Payment Velocity
Improvement



Up to 30%

Improvement in
Aged A/R



Improve A/R and achieve greater profitability

Learn how our customized A/R Management Solution can help drive substantial improvements in your practice's overall financial health by [contacting us](#) for a complimentary assessment.



R1 RCM is a leading provider of technology-enabled RCM services which transform and solve revenue cycle performance challenges across hospitals, health systems and group physician practices. R1's proven and scalable operating models seamlessly complement a healthcare organization's infrastructure, quickly driving sustainable improvements to net patient revenue and cash flows while reducing operating costs and enhancing the patient experience.

Learn more at r1rcm.com or contact us contact@r1rcm.com.