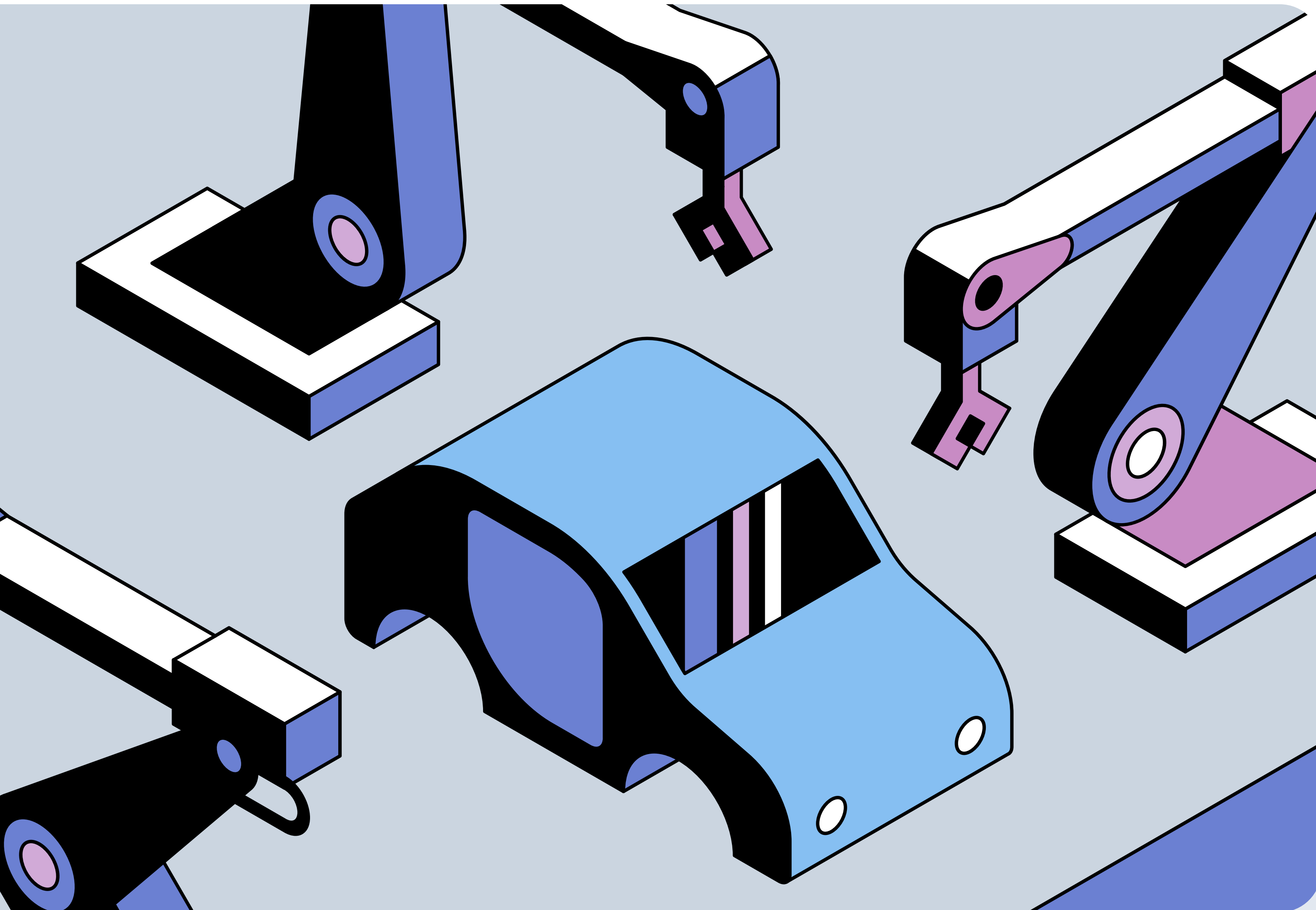


scale

The AI Platform for Computer Vision Applications



Maximize efficiency on engineering efforts.

Why Scale?

Scale is trusted by leading ML teams to drive high model performance with the ability to handle long-tail edge cases.



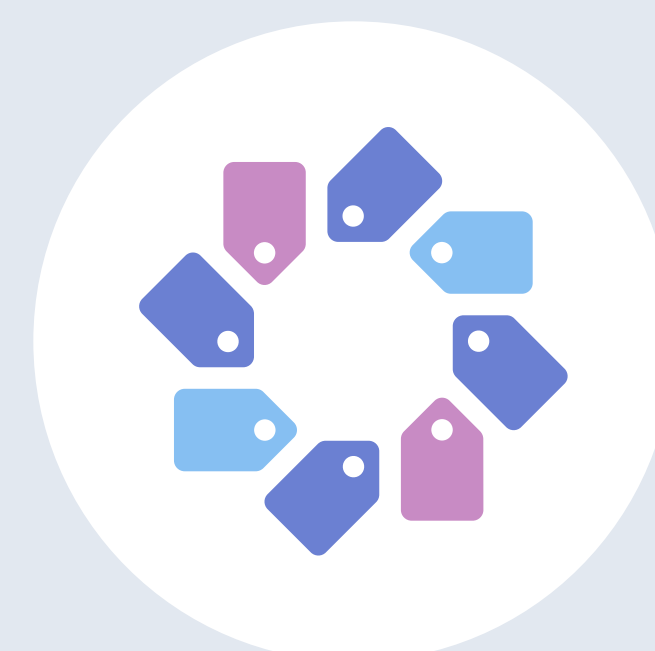
About us

Scale AI is the Data Platform for AI. Built by ML engineers for ML engineers, Scale accelerates the development of AI applications by providing a data-centric, end-to-end solution to manage the entire ML lifecycle.



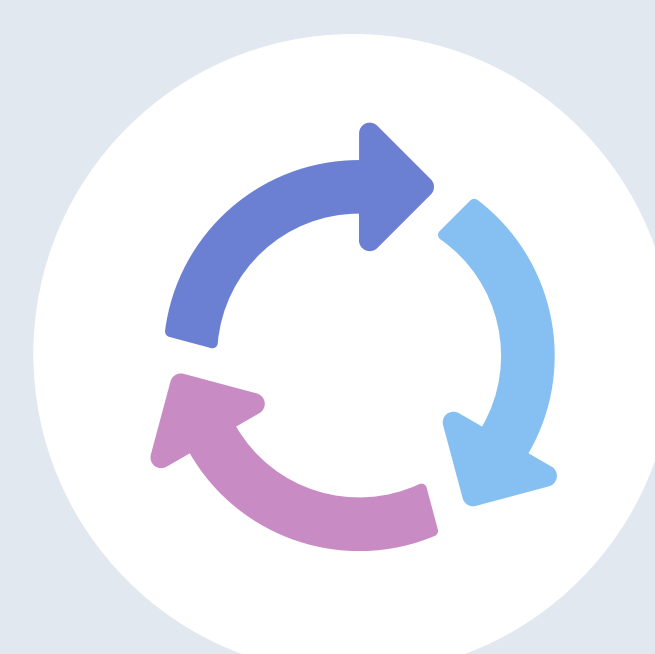
Contact us

Looking to scale and accelerate your AI development? Contact us at hello@scale.com



Enhance data quality

Your team can expect labeling accuracy of over 99% between our ML-powered pre-labeling and well-trained workforce. With Scale Nucleus, you can curate your data in order to understanding where your labeled dataset falls short, and then choose to fix the problem.



Accelerate iterations on models

Scale Nucleus helps you understand class imbalances, false positives, and error metrics to debug dataset quality and model performance, all in the same user flow. Collaborate with teammates on dividing and conquering different edge cases.



Increase engineering productivity

The Scale AI Platform is built by machine learning engineers to maximize engineering productivity. Scale's data-centric, end-to-end platform allows teams to reduce the need for tedious data ops so that your engineers can focus on model development.

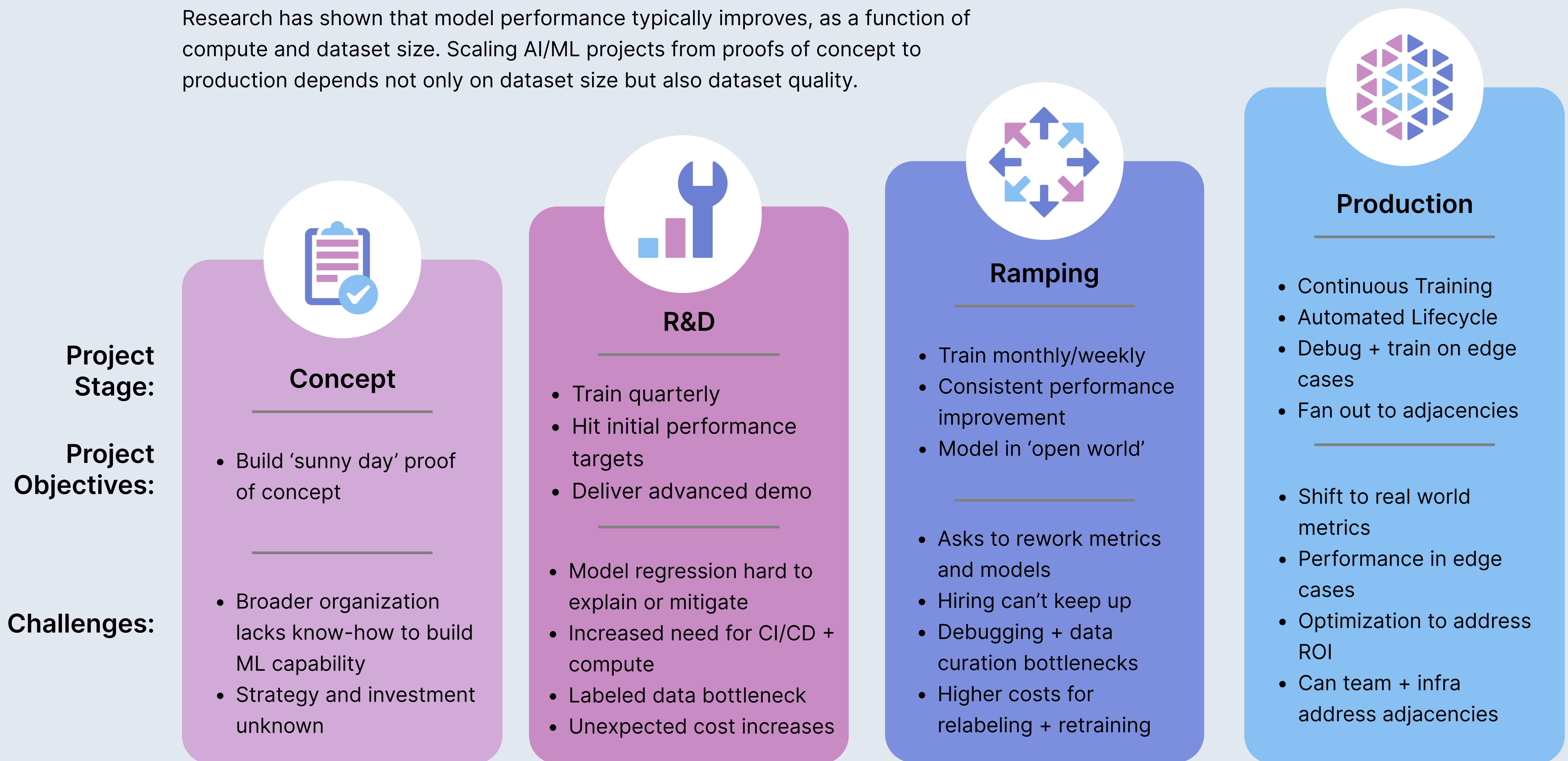


Deliver Value on AI Investment

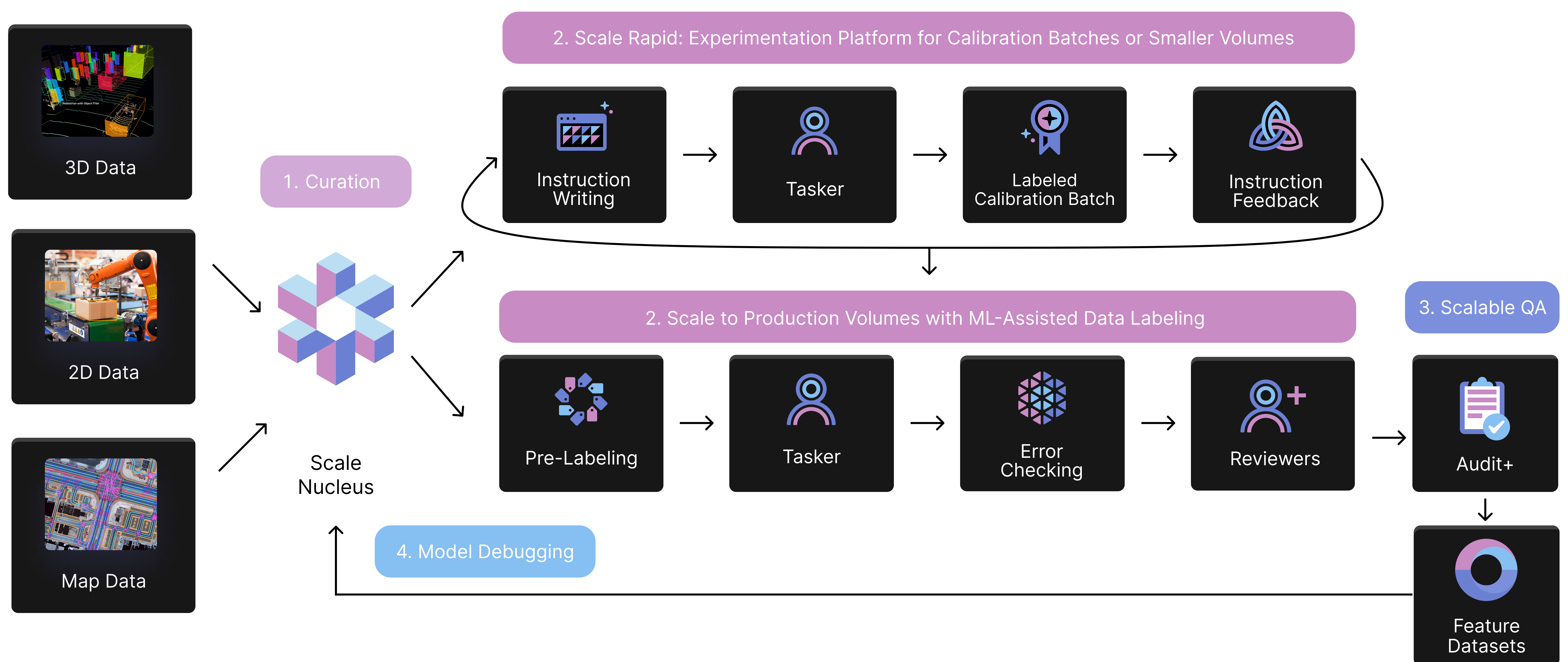
Better data, more than model tweaks, leads to more performant models. Performant models leads to faster deployments. Deliver and realize value from your AI investments faster with better data.

The Challenge:

Research has shown that model performance typically improves, as a function of compute and dataset size. Scaling AI/ML projects from proofs of concept to production depends not only on dataset size but also dataset quality.



How It Works: API-Driven MLOps Platform



CUSTOMERS

World Class Companies

Scale is trusted by leading ML teams to provide a data-centric, end-to-end solution to manage the entire ML lifecycle.

