

Mesh - Relay 2 Units

Manufacturers Details

Atamate Ltd
Old House
The Ridings
Oxford
OX3 8TB
UK

Tel: +44 1865 920 101

www.atamate.com



Overview

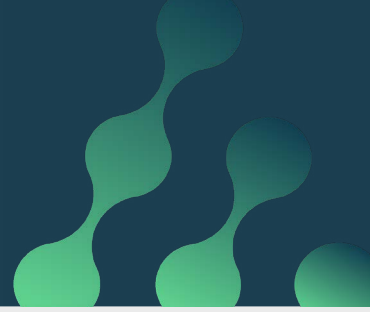
The Mesh-3 Relay2 is a remote Bluetooth relay unit with 2 relays in it. Each relay is a bistable change-over relay with 2 variants capable of a maximum of 6 amps or 16 amps. The relay outputs are fully isolated so that the load can be powered from another source including other voltages, or it can be supplied from the 6.3 Amp fused supply provided by the Relay2 board.

Detailed Description

The Relay2 units have the following features -

- 2 independent relays with isolated changeover outputs (common, N/O & N/C)
- Relay2-6 has 2 has a maximum 6 amps load rating, and the Relay2-16 has a maximum of 16 amps load rating. All relays are 250Vac / 30Vdc rated for resistive loads.
- MOV transient voltage suppression devices are fitted between relay terminals to protect from transient voltage spikes.
- Their control circuitry is powered from a 230Vac supply. Other voltage supplies available on request (e.g. 24Vdc, 12Vdc)
- There is a 'power-on' LED to show that the control circuitry has power.
- Push-buttons to put each relay in the 'set' or 'reset' position for functional testing during installation.
- The common, N/O and N/C are brought out to terminal blocks capable of taking wires from 0.2mm² (CAT5 cable core) up to 3.6mm².
- The Relay2 is supplied in a plastic box but also fits in a standard plastic UK 'deep double backbox' - (minimum 120x70x45mm internal).
- Relay2-6 will also fit in a single backbox (min 70x70x45mm) with limited space for cables.
- AUX terminals for connection to -
 - 1x I2C data link
 - 3.3V and 0V power supply (max 1.5A)
 - 4x digital input lines (for switches)
 - 1x RS485/modbus data link
- Included power fail detect (and fuse blown).

Mesh - Relay 2 Units



Installation Information

The Relay2 units can be installed by any qualified electrician. They are powered by 230Vac supply with 20A max protection. Loads may be supplied via local fused Live Lf (6.3A fuse in Relay2-6) or via a separate supply. All wiring should be compliant with local regulations e.g. in UK to BS7671.

The Relay2 unit will fit in a standard UK plastic double backbox.

Environmental

Humidity: 10 to 90% RH

Temperature: 5 to 40 C

Water/dust protection: IP20.

The Relay2 is part of an Atamate smart building installation. This is to be designed and commissioned by Atamate Partners.

