

Shipyard Supply



Corporate Office: Louisiana 2828 Lausat Street Metairie, LA 70001

Phone: (504) 833-8345 Fax: (504) 833-8346

WHY SHIPYARD SUPPLY?



SERVICING INDUSTRY

- PUMP & RENTAL, HVAC, ENVIRONMENTAL, OIL & GAS, SHIPBUILDING, TRUCK & TRANSPORTATION, MARINE AND BARGE, AND DIVNG COMPANIES WORLDWIDE.



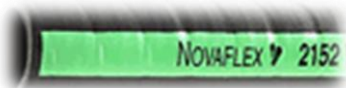
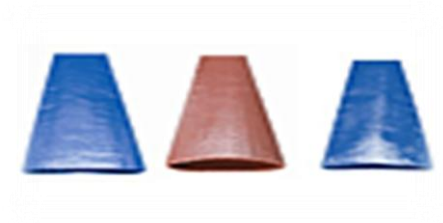
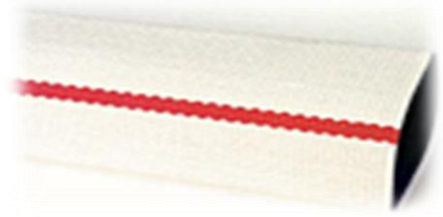
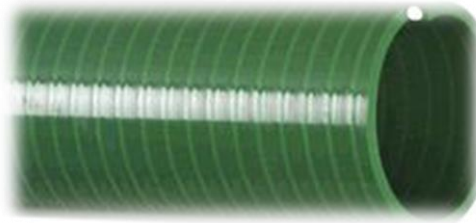
SPECIALIZING IN THE PUMP & RENTAL INDUSTRY

- LARGEST INDUSTRIAL HOSE & COUPLING INVENTORY ON THE GULF COAST
- FLANGED OS&D DOCK HOSE
- PRE-ASSEMBLED STAINLESS STEEL HOSE
- PRE-ASSEMBLED PETROLEUM, CHEMICAL & VAPOR COMPOSITE HOSE
- LARGE BORE RUBBER WATER SUCTION AND DISCHARGE HOSES
- HYDRAULIC HOSE ASSEMBLIES
- CAMLOCKS IN EVERY MATERIAL & STYLE
- STRAINERS, FOOT VALVES, CROWFOOT
- WELDED FLANGE X FLANGE CONCENTRIC ADAPTERS, 90'S, 45'S & T'S
- FLANGE GASKET KITS



WE HAVE A HOSE FOR ANY APPLICATION

1. PVC, KANAFLEX, EPDM, BLACK RUBBER SUCTIONS HOSES
2. NITRILE, PVC, IRONSIDE, RUBBER, MILL DISCHARGE HOSE
3. OIL SUCTION & DISCHARGE HOSE
4. FUEL & VAPOR DROP HOSES
5. UHMW & XLPE CHEMICAL HOSES
6. WIRE BRAIDED BULL HOSE
7. TEXTILE BRAIDED HOSE ASSEMBLIES





**CAMLOCKS IN ALUM., STAINLESS, BRASS, POLY & IRON
IN ALL SIZES AND STYLES**

1. CAMLOCK ADAPTERS & REDUCERS IN ALUM. STAINLESS, & BRASS
2. ROUND, SQUARE, BOTTOM, TOP, FLANGE STRAINERS
3. CROWFOOT, BOSS CLAMPS, COMBO NIPPLES, MENDERS



LARGEST FLG X FLG BUILT-IN DOCK HOSES INVENTORY IN THE US!

- WE STOCK 2" – 16" X 10' & 20' SECTIONS
- BUILT-IN CARBON-STEEL RAISED-FACED FIX X FLOATING FLANGES
- 250PSI WORKING PRESSURE
- 212 TEMPERATURE RATING
- TESTED & CERTIFIED TO U.S. COAST GUARD & NAHAD STANDARDS
- WE CAN CUSTOM BUILD ANY RUBBER HOSE TO MEET ANY APPLICATION

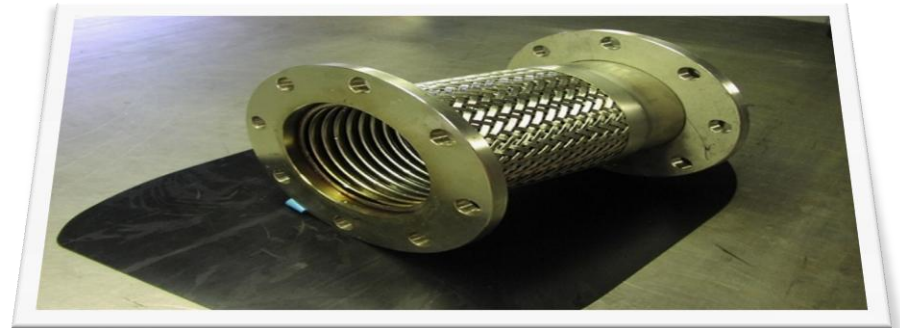


DOUBLE-BRAIDED STAINLESS STEEL HOSE

- ❑ PRE-ASSEMBLED & TESTED FOR QUICKER RESPONSE TIME
- ❑ STOCKING SIZES RANGE FROM 2"-12" IN 10' & 20' SECTIONS
- ❑ ALL HOSES ARE DOUBLE-BRAIDED CONSTRUCTION
- ❑ ALL ASSEMBLIES ARE COUPLED WITH 150PSI STAINLESS-STEEL FIX X FLOATING FLANGES
- ❑ ALL HOSES ARE TESTED TO U.S. COAST GUARD & NAHAD SPECIFICATIONS



CUSTOM STAINLESS-STEEL ASSEMBLIES IN- HOUSE BY OUR CERTIFIED WELDER



PETROLEUM, CHEMICAL, & VAPOR COMPOSITE HOSES

- I. PRE-MADE ASSEMBLIES FOR QUICK TURNAROUND**
- II. FLEXIBLE**
- III. HIGH TEMPERATURE RATING (212 Degrees)**
- IV. HIGH PSI RATING (250 PSI)**
- V. CARBON-STEEL FIX X FLOATING FLANGES WITH GALV. INNER & OUTER WIRE FOR ALL PETROLEUM BASE APPLICATIONS**
- VI. PTFE LINED FOR YOUR AGGRESSIVE CHEMICAL APPLICATIONS (350 Degrees)**
- VII. STAINLESS-STEEL FIX X FLOATING FLANGES WITH STAINLESS STEEL INNER & OUTER WIRE FOR HARSH ENVIRONMENTS**



FOR YOUR CONVENIENCE WE STOCK PRE- ASSEMBLIES OF:

- ✓ **2" – 6" X 20' PVC SUCTION HOSE COUPLED CXE & CXKC W/ STRAINERS**
- ✓ **2" – 6" X 50' BLUE PVC DISC. HOSE COUPLED CXE-ALUM. W/ SS CLAMPS EA. END**
- ✓ **2" – 6" RED IRONSIDE DISC. HOSE COUPLED CXE-ALUM. SS CLAMPS EA END**
- ✓ **50' BLACK NITRILE HOSES COUPLED CXE, MALE X FEMALE BAUER, FLANGE X FLANGE W/ SS ULTRA-LOK CLAMPS OT PLATED STEEL CRIMP SLEEVES**
- ✓ **¾" & 1" X 50' 300PSI RED AIRHOSE ASSEMBLIES**
- ✓ **2" & 3" X 10', 25', & 50' LENGTHS WIRE-BRAIDED BULLHOSES COUPLED IN CROWFOOT, GROUND JOINTS , AND FLANGES W/ BOSS CLAMPS OR CRIMP FERRULES**



OUR CRIMP PROGRAM



OUR CRIMP GUARANTEE



- WE MEASURE O.D.
- WE CRIMP TO SPECIFICATION
- WE RE-MEASURE
- WE VISUALLY INSPECT
- WE TEST



TEST UNITS UP TO 60,000 PSI



FINISHED PRODUCT



STATE OF THE ART HYDRAULIC SHOP



IN-HOUSE FABRICATION SHOP

- **FULL WELD SHOP CAPABILITIES**



- CONCENTRIC FLANGE X FLANGE
- 90'S FLANGE X FLANGE
- 45'S FLANGE X FLANGE
- T'S FLANGE X FLANGE
- FLANGED SPOOL ADAPTERS
- CUSTOM MANIFOLDS
- FLANGE X CAMS OR NIPPLE



**ALL FLANGE ADAPTERS ARE WELDED
INSIDE & OUT**



STANDARD ADAPTERS OR CUSTOM MADE



FLANGE ADAPTERS & SPECIALTY 1PC CAM ADAPTERS:

- FLANGE X FLANGE ADAPTERS
- FLANGE X CAMLOCK
- CAMLOCK 90'S
- CAMLOCK 45'S
- CUSTOM COMPANY PAINT
JOB ON ALUM & IRON
ADAPTERS





BAUER PIPE IN-STOCK
6"THRU 12" IN 10' & 20' SECTIONS

EVERY BAUER COUPLING YOU COULD IMAGINE

- 2" THRU 12" MALE & FEMALE HOSE SETS
- STRAINERS X MALE OR FEMALE BAUER
- NPT X MALE OR FEMALE BAUER
- FLANGE X MALE OR FEMALE BAUER
- "CRIMP-RITE" STYLE MALE X FEMALE BAUER SETS FOR CRIMPING
- HDPE X MALE OR FEMALE BAUER



PPE PORTABLE POWER CABLE



FOR HEAVY DUTY INDUSTRIAL POWER APPLICATIONS

- PORTABLE GENERATORS
- AIR CONDITIONING
- GROUNDING
- POWER EXTENSION
- SHORE POWER
- MINING OIL DRILL
- & MORE!

HIGHLY FLEXIBLE UL LISTED NO. 30 BARE
COPPER WITH TPE JACKET

HIGHLY DURABLE RATED TO 2000V,
RESISTANT TO OIL, SUNLIGHT, WATER, & FLAME

CUSTOMIZABLE SEQUENTIALLY PRINTED,
SPECIAL COLORS, PRINTING, PACKAGING &
CUT LENGTHS AVAILABLE



AVAILABLE IN BLACK, RED, YELLOW, BLUE OR GREEN*



CUSTOM COLORS AND STRIPING AVAILABLE*

*5,000' minimum run for colors and striping

Bulk 500' reels only
Pricing is at COMEX prior months average
Freight PPD

H.D. LONG LENGTH TPU FRAC / BYPASS DELIVERY HOSE



- Available in 6", 8", 10", 12" x 660' Lengths.
- Manufactured On Custom Made Steel Reels
- Extra Heavy Duty Hose
- No Leak Reusable Couplings
- Large Diameter
- Long Lengths
- Great for Bypass Jobs
- Delivered as Coupled Assemblies



HVAC IS OUR BUSINESS



WHATEVER YOUR NEEDS MAY BE WE HAVE YOU COVERED

- DUCT HOSE SIZES RANGING FROM 6" – 24" X 25' SECTIONS
- RUBBER CHILLER SUCTION HOSES
- STAINLESS-STEEL HOSE ASSEMBLIES
- RUBBER 4-PLY DISCHARGE HOSES
- FLANGE, CAM OR VICTAULIC HOSE ASSEMBLIES
- TRI-LOKT, ULTRA-LOK & PLT. STL. CRIMP SLEEVES
- ALL HOSES ARE TESTED & CERTIFIED TO U.S. COAST GUARD & NAHAD STANDARDS BEFORE BEING SHIPPED



DUCT HOSE STOCKED TO THE CEILING

- SIZES 6" THRU 24"
- COMES IN YELLOW/BLACK OR WHITE/WHITE
- MANUFACTURED WITH EXTRA HEAVY DUTY SEWN WEARSTRIP
- FLAME RESISTANT
- WIRE ROPE RINGS ON EACH END
- 6" PITCH
- 45 MILL, 13oz MATERIAL
- 12" & 20" LAYFLAT Y'S & T'S WITH WIRE ROPE RINGS



Customized Welding Cable

- AVAILABLE IN 1/0, 2/0, 3/0 AND 4/0
- PRIVATE LABEL COVERING IN ANY COLOR
- AVAILABLE IN:
 - 50' AND 100' LEAD ASSEMBLIES
 - 500' Spools
 - 3' AND 50' GROUNDS
 - 10' WHIPS



ACCESSORIES



WE HAVE IT ALL

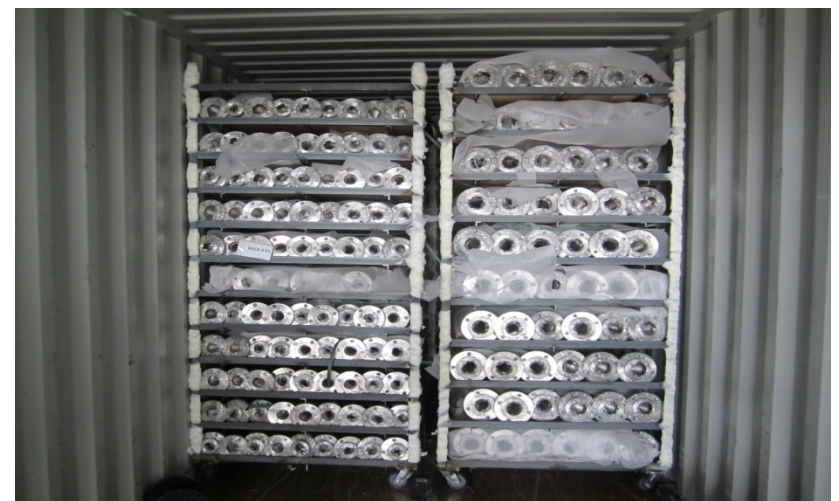
- 1) GASKET KITS W/ NUTS & BOLTS FROM 2" – 12"
- 2) VALVES, PIPE FITTINGS, THREADED, SLIP-ON, WELD-NECK FLANGES
- 3) EXHD FLANGE STRAINERS
- 4) HOSE ENDS, MALE NPT, & FEMALE NPT CROWFOOT IN SIZES $\frac{1}{4}$ " – 2"
- 5) RISING & NON-RISING FLANGED GATE VALVES
- 6) HAMMER UNIONS



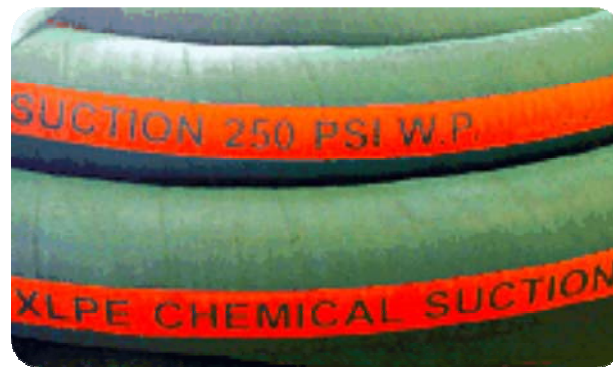
BUILT-IN DOCK HOSE ASSEMBLIES



DOUBLE-BRAIDED STAINLESS-STEEL ASSEMBLIES



CHEMICAL HOSE ASSEMBLIES



MISC. SUCTION & DISCHARGE HOSE



OIL SUCTION & DISCHARGE



COMPOSITE HOSE ASSEMBLIES



IN-HOUSE FABRICATION SHOP

