



SUMMERS
RUBBER COMPANY

Summers Rubber Company



Products & Services for the Conveyor Belt Industry

CONVEYOR BELT

IDLERS AND PULLEYS

SKIRTBOARD AND SCRAPERS

BELT FASTENERS

CHUTE LINING & RUBBER REPAIR KITS

INDUSTRIAL HOSE & FITTINGS

History

Summers Rubber Company



Do It Right. Do It Now. Do It Better.

The Summers Rubber Company was founded in 1949 by W.H Summers. Today, after more than 60 years in the Industry, Summers Rubber has become a leading source of industrial hose products by combining a unique dedication to customer needs with an in-depth knowledge of hose, components, fittings and accessories. This philosophy has guided the company's growth under three generations of Summers family leadership. Today, as part of our focus on ISO 9001:2008 compliance, each Summers employee undergoes extensive training. Many of the Summers Rubber's sales personnel and fabricators are NAHAD certified and can provide in-depth knowledge about products that deliver improved performance, greater durability and significant cost-savings to you.

12555 Berea Rd
Cleveland, OH 44111
Phone: 844-772-4673

1210 Kelly Ave
Akron, OH 44622
Phone: 330-785-7303

1857 E. 337th, Unit B
Eastlake, OH 44622
Phone: 440-946-5611

100 Tennis Center Dr.
Marietta, OH 45750
Phone: 740-373-0303

1101 N. Liberty St
New Castle, PA 16102
Phone: 724-652-4673

1619 State Route 39, NW
Dover, OH 44622
Phone: 330-364-7721

10 West Piper Rd
Mansfield, OH 44903
Phone: 419-526-5800

WWW.SUMMERSRUBBER.COM

**SINGLE PLY • MULTI PLY • PVC • URETHANE • CLEATED
INCLINE • RUBBER ROUGH-TOP • DIAMOND-TOP
THERMOPLASTIC/MONOFILAMENT**



Lightweight

Your toughest belting demands industrial strength resistance to oil, grease, vegetable acids and chemicals. They may need to operate at extreme high or low temperature -- with low stretch, high fastener holding ability and superior rip, tear and gouge resistance.

We've got you covered.



CONVEYOR BELT

Food Belting

Our Foodgrade, USDA, FDA monofilament carcass is industrial grade and 100% synthetic. The monofilament provides for flat running and easy tracking with torsional rigidity. With single ply construction there's no cover or ply separation. Cleats and Molded Lugs are available in white F.D.A. or black oil-resisting nitrile compound, black SBR rubber, or black/white butyl. They are fully hot molded into the belt surface, not cold bonded or cemented on.

Package & Bulk-Handling

Our PVC solid woven and Rubber Rough Top is the longest wearing most economical and least troublesome belting available today. Constructed of a single ply interwoven and a double ply carcass impregnated and covered with polyvinyl-chloride or SBR gum rubber. With resistance to moisture, rot, mildew and wicking—our PVC and Rubber Rough Top is standard for distribution centers, bulk handling, forest products and many more applications.

Recycling Industry

Our polyurethane belts are specially formulated for superior resistance to abrasion, rips, tears and gouging. With our versatile fabrications (such as corrugated sidewall), small pulley requirements and ease of splicing -- our belts are ideal for sorting, handling cullet glass, metal stampings and mechanical parts.



Heavyweight

CONVEYOR BELT

Our own Viking® line of belt is manufactured Tough and Tested Tough on over 400 miles to date in some of the most torturous applications...

VIKING® PREMIUM Belt uses premium polyester/nylon fabric in the belt carcass with a full 10 to 1 break strength for minimum stretch, maximum fastener retention and superior load support.

The Grade II SBR/Natural **PREMIUM** rubber compound exceeds RMA 2 specifications and even approaches RMA 1. This results in a "best buy" for handling abrasive materials like **limestone, crushed rock, coal, sand and gravel**. Heavy rubber skins and high adhesion between plies team with a heavy overall gauge to make an exceptionally impact resistant, long-lasting conveyor belt.

2 PLY 220 VIKING® PREMIUM 3/16 x 1/16
available in 18-60" widths

3 PLY 330 VIKING® PREMIUM 3/16 x 1/16
available in 24-60" widths

3 PLY 330 VIKING® PREMIUM 1/4 x 1/16
available in 24-60" widths

4 PLY 440 VIKING® PREMIUM 1/4 x 1/16
available in 36-48" widths

3 PLY 330 HOT VIKING® 700 Degree 3/16 x 1/16
available in 24-36" widths

2 PLY 220 VIKING® ASPHALT 350 Degree 3/16 x 1/16
available in 20-36" widths

ASK YOUR SALES REPRESENTATIVE ABOUT A BELT SURVEY TO ADDRESS YOUR CONVEYOR SYSTEMS NEEDS AND STRESSES SO THAT WE CAN RECOMMEND THE BEST BELT FOR THE JOB



**IMPACT RESISTANT • LOW-STRETCH
SUPERIOR LACE RETENTION • HIGH COVER ADHESION
OUTSTANDING TROUGHABILITY**

SINGLE PLY • TWO, THREE, AND FOUR PLY • HOT BELT CLEATED INCLINE • CORRUGATED SIDEWALL

The Covers

Grade 1 • Premium rubber compound. Conveying sharp, abrasive materials.
General Purpose • Aggregates and above-ground mining operations.
Fire Resistant • Designed to MSHA standards for underground mining.
Fire/Oil Resistant • Designed for substances like oil-treated coal in power plants.
Moderate Oil Resistant • "MOR" is recommended for wood chips or whole grains
Super Oil Resistant • "SOR" is recommended for oil metal parts/crushed soybeans.
Ultra-Guard • Specifically engineered for whole grain products like wheat/cotton seed.
Moderate Heat • Hardening, cracking & ozone resistant -- up to 300°F
Heat Resistant • Hardening, cracking & ozone resistant -- from 350-400°F
Oil/Heat Resistant • Flexible at 350°F; hot asphalt paving mix, oil extractors, etc.
SOR-Fr • Premium elastomer that also meets MSHA 2G flame retardant standards.

INSTALLATION & SERVICE

CONVEYOR BELT CREWS • 24/7/365

Summers Rubber Company stocks and offers various skirt board and flashing options for your application.

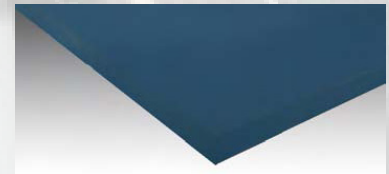
Wherever noise, abrasion, impact, sticking or bridging is a problem, Summers Rubber has the answer. Our experienced installation crew has installed rubber, urethane, and plastic liners for over 20 years. We also provide bulk materials and factory training to customers who choose to install their own liners.

VIKING Skirtboard Rubber

Improve your conveyor system and equipment performance by protecting it with skirting. Reduce your spillage at loading and transfer points on conveyor belts with SBR skirtboard rubber and protect your equipment at the same time. Abrasion and weather resistant for tough applications in all types of environments.

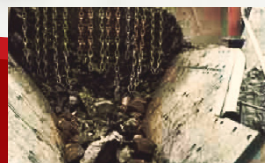
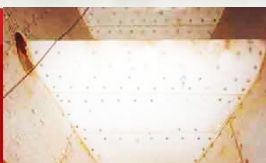
Featuring 1,000 lb. tensile strength and 300% elongation in hardness of 55 - 60 durometer in gauge; 1/4", 3/8", 1/2", 3/4" and 1" thickness, supplied in 50-ft. rolls, 4" to 12" wide. Also available in full slabs (48" wide x 50-ft. roll).

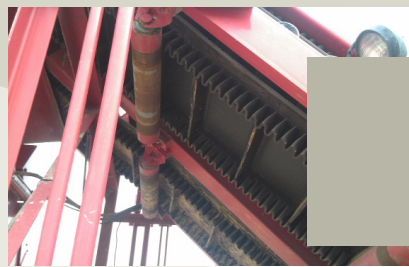
Materials: SBR Rubber, Gum Rubber, Urethane, PTFE/Teflon, UHMW, and other high performance polymers.



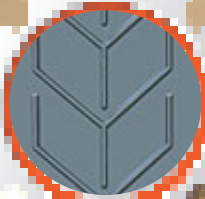
Pangskirt 50/Blue

Tough, resilient natural rubber compound is designed to seal and control material spillage on a conveyor belt without wearing on the belt. The natural rubber blend is 50 durometer and available in stock. Sealing without damaging or grooving conveyor belt covers, Pangskirt Blue can be used for conveyor, dust curtains, back stops and other systems.





Fabricati



VIKING Portable Machine Belts

TRS offers high strength cleated rubber belts to withstand the impact of heavy and sharp materials at the loading points. Our single piece molded cleats cannot delaminate from the belt surface. Special endless procedures assure splices withstand the rigors of high speeds and small pulley diameters. Choose from a 2 ply or 3 ply construction.

VIKING Hot Asphalt Belts

TRS offers many popular Hot Asphalt Belt assemblies for road wideners. 350F degree high temperature oil resistant rubber covers and low-stretch synthetic carcass meets or exceeds manufacturer specification. High strength, low-profile, scraper friendly, field repairable R-5 hinge fasteners resist pull-out even on small pulley diameters.



Wing & Drum Pulleys

Any size drum and wing pulley in standard, heavy and mine duty manufactured right here in the USA for any applications you may have. Complete packages available including lagging, shaft and bearings. Mine duty drum and wing pulleys are offered in the same size ranges as CEMA rated pulleys, designed with higher safety and service factors when used in same applications.

Belt Cleaners & Replacement Blades

Mineline® MHS Heavy-Duty Secondary Belt Cleaners and Precleaners from Flexco tackle those tough applications where the standard-duty is not enough. Dual spring tensioners preload the individual cushions, helping absorb impact from mechanical splices. Tough carbide-tipped blades provide long wear life and high-performance cleaning.



ons & Accessories

CONVEYING PRODUCTS TO MOVE YOUR INDUSTRY



Flexco VP™

Rubber-covered steel fasteners allow for a continuous smooth surface when plate strips are countersunk. Designed for rubber plied and PVC solid woven belting and for worn belts unfit for vulcanized splices.



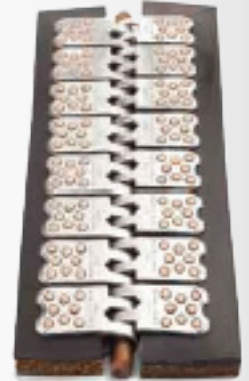
Bolt Solid Plate

Commonly used on higher-tension belts used for highly abrasive materials such as sand, gravel and crushed stone. Specially formed teeth penetrate deep into the belt -- without damaging carcass fibers.



Flexco® SR™ Scalloped Edge™

Features a low profile that significantly reduces the fasteners exposure to cleaner blades, skirt rubber, and return idlers. The staggered rivet pattern provides maximum holding ability by allowing the rivets to pass between the carcass fibers without damaging them.



Bolt Hinged

Ideal for applications requiring frequent belt-length alterations; the joints can be separated simply by removing the hinge pin. On-site installation requires only a portable hand or power tool.



*SUMMERS RUBBER COMPANY
UNDERSTANDS THERE'S MORE
TO A MATERIAL-HANDLING
SYSTEM THAN JUST THE BELT*

MLT SUPER-SCREW® - Flexible Rubber Conveyor Belt Splice System



The SUPER-SCREW® is part rubber and part metal--a truly hybrid splice with the advantages of vulcanization and the quick and easy installation of metal. Material will not sift through the splice area as SUPER-SCREW® is a one piece construction without a hinge or pin. It's designed to reach from the end of the belt deep into the fabric for added strength and follow belt movement around pulleys, including "S" drives and gravity takeups.

- High tensile strength (380# PIW to 1200# PIW working strength).
- High reach back into belt (up to 4") eliminates fastener pull-out problems.
- Installs flush with the top surface of the belt
- No special template required for installation, just a power screwdriver.

Available Styles: Standard Wear Resistant, 400F Degree High Temp, and Oil Resistant.

**EQUAL TROUGHING IDLERS
FEEDER/PICKER TROUGHING IDLERS
IMPACT IDLERS
OFFSET CENTER ROLL IDLERS
LIVE SHAFT ROLLERS
SELF-ALIGNING RETURN IDLERS
CHANNEL-MOUNT LOW PROFILE
RUBBER CUSHIONED RETURN IDLERS
RETURN BELT IDLERS
40 & 50 CEMA B IDLERS & MORE**



Idlers

All idlers feature heavy duty foot brackets, external deflectors, rounded ends, quick change rolls, self-cleaning cross members, non-clogging centers, and a jig welded frame to ensure roll alignment.





Services

Installation

Summers Rubber has the crews and equipment to string, install, vulcanize or fasten, and wind up most any belt (heavyweight/lightweight), big or small. Our crews have seen almost every situation that can shut a facility down, and they know how to fix it. We also offer in-house custom slitting up to 72" wide and frac belt service on-site.

Pulley Lagging

Summers Rubber regularly re-lags customer pulleys with press cured rubber lagging (diamond or smooth). Vulcanized under 20 tons of pressure, our lagging cannot "glaze" over, so it maintains its high coefficient of friction during the entire life of the rubber.

Our factory trained technicians strip the old rubber, prepare and prime the pulley, and cold vulcanize the rubber using methods which substantially exceed OEM adhesions.

This gives you significantly longer service life than original OEM rubber lagging. It's available in 1/2" rubber thickness.

Portable Equipment

Our large inventory of ready to ship belt comes from popular manufacturers such as Gomaco mobile machines. For OEM machines Summers Rubber Company offer 3 ply 36" width in 36'6" and 72'2" -- to get you back up and running.

Whether off or on-site, we offer...

Vulcanization up to 48" wide

Cleating

V-Guide

Corrugated Sidewall

Elevator Bucket Belt Punching & Installation

Detailed Belt Surveys

Visual inspections with recommendations





YOUR SHEET RUBBER SOLUTION

From off the shelf gasket material ready to ship, to complete fabrication, Summers Rubber is your choice for custom rubber solutions. Our inventory offers great flexibility in solutions for your company.

Materials include, but are not limited to:

**NEOPRENE
RED GASKET (SBR)
NITRILE
TAN GUM
EPDM
SILICONE
LINATEX
NOVAFLEX**

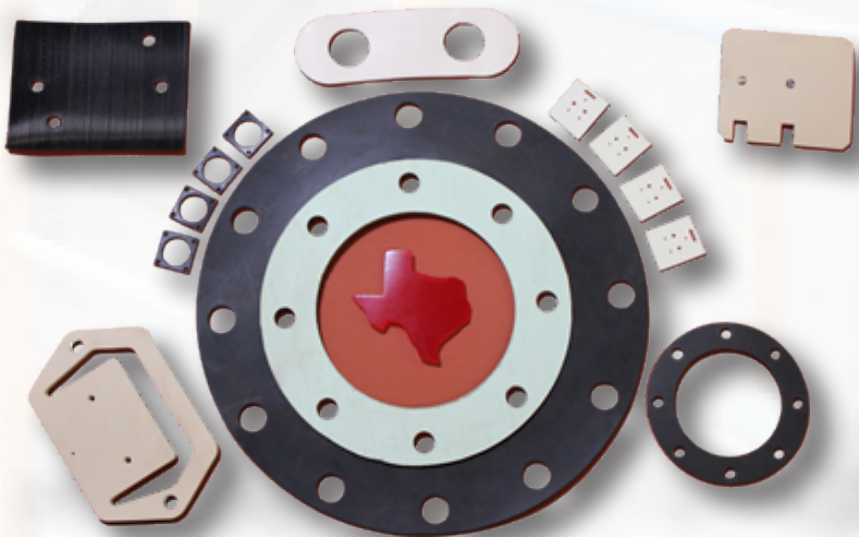


*SEAL IN PRESSURES UP TO 3000 PSI &
TEMPERATURES FROM CRYOGENIC TO 2000 °F*

We have a variety of capabilities and suppliers. Whether you need a simple sheet, a custom cut gasket, or a unique conical boot -- Summers Rubber can provide a solution.

Our rubber expansion joints carry safety ratings exceeding product specifications in such areas as pressure and movement.

Summers Rubber stocks or custom-makes gaskets up to 60" in diameter and thicknesses up to 2".



**CUSTOM:
DIE-CUTTING
STAMPING
SLITTING
STRIPPING**

Hose



Industrial Hose

We carry the premier names in the industry: Continental/Contitech, Gates, Sunflow and Kanaflex. Our extensive inventory in multiple locations, includes a full complement line of fittings and accessories such as quick disconnects, pressure gauges and adapters. We specialize in large diameter hoses including up to 12" heavy duty rubber suction and discharge.

Ducting from 1" to 24" in stock, cut lengths.

Tubing Materials

Teflon
Polyurethane
PVC
Gum
Neoprene
EPDM
Nylon
Silicone

Ducting Materials

PVC
Thermoplastic Rubber
Urethane
Silicone
Aluminum
Fiberglass



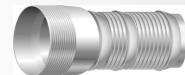
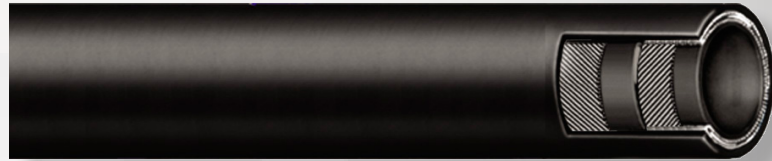
Discharge Hose

Available bulk or 50' lengths coupled with short shank pin lug couplings or cam and groove fittings.

Blue PVC Water Discharge Hose -- Polyvinyl and nylon discharge hose is extremely lightweight and weather resistant. **1 1/2"-6" diameter in stock.**

Red HD PVC Water Discharge Hose -- For applications where higher working pressures are required than standard blue. **1 1/2"-6" diameter in stock.**

Mill Discharge Hose -- Black rubber tube with woven synthetic mildew resistant jacket. **1 1/2"-6" diameter in stock.**



Suction Hose

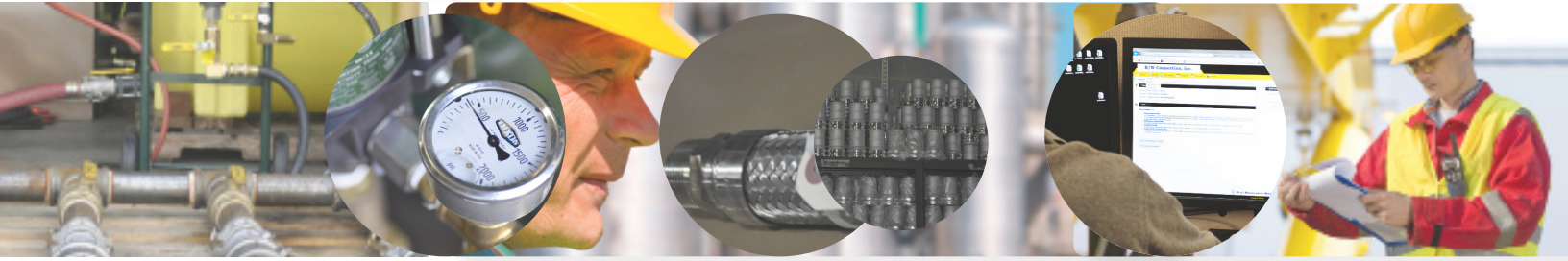


Heavy Duty Rubber Suction Hose -- EPDM blend tube and cover, weather and ozone resistant, resistant to water based agriculture/aggregate fertilizers and salt water. For suction, discharge, or gravity flow of water in construction, mining, oil exploration, agricultural and equipment rental. **1 1/2"-12" diameter in stock.**



Kanaline SR -- Lightweight and flexible water suction and discharge hose for heavy duty applications requiring combined vacuum and higher working pressures. Flexible PVC, rigid PVC helix, synthetic braiding. **4"-10" diameter in stock.**

TEST, TAG AND TRACK YOUR ASSETS FROM CRADLE TO GRAVE WITH PROACTIVE PROGRAMS TO KEEP YOU RUNNING EFFICIENTLY.



Summers Rubber fabricators are certified via the NAHAD Hose Safety Institute for hydraulic, industrial & ptfе Hose Assemblies, and to multiple levels of Eaton/Aeroquip® certification.

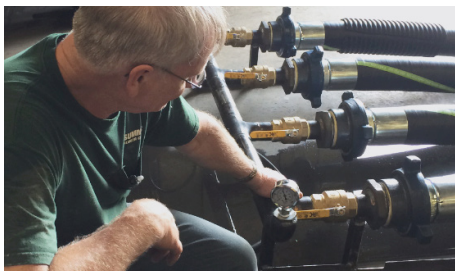


Hydraulic Hose

Our inventory of hydraulic hose, fittings, accessories & adapters is stocked with premier manufacturers, vast and local. Summers Rubber Company is a premier Eaton/Aeroquip® distributor, one of only a handful in the country. That means our stores are verified as EXPRESS stores, meaning we make your custom hydraulic hose while you wait in the shop.

We can crimp quarter inch I.D. through two and a half inch, up to 5000 PSI working pressure, and one to one and a half inch up to 6000 PSI.

MINIMIZE YOUR RISK. CONSOLIDATE YOUR DOCUMENTS. REDUCE YOUR COST.



TEST

Hydrostatic pressure testing for hydraulic, industrial and metal hose assemblies.

Utilizing various test equipment mobile onsite or in-house, we can test up to 50,000 PSI.

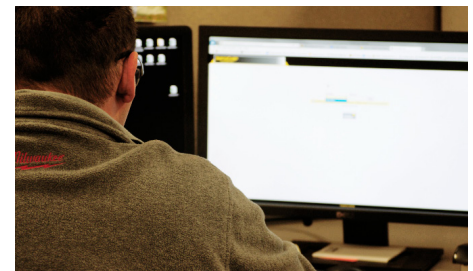
Capitalizing on manifold test systems speeds the test cycle of high volume hose testing, ensuring fast delivery.



TAG

Tagging the hose makes it easier for you to identify and locate your hoses.

Labeling services includes color coding, keyed fittings, imprinted metal tags or custom-scribed hose ferrules with critical hose information.

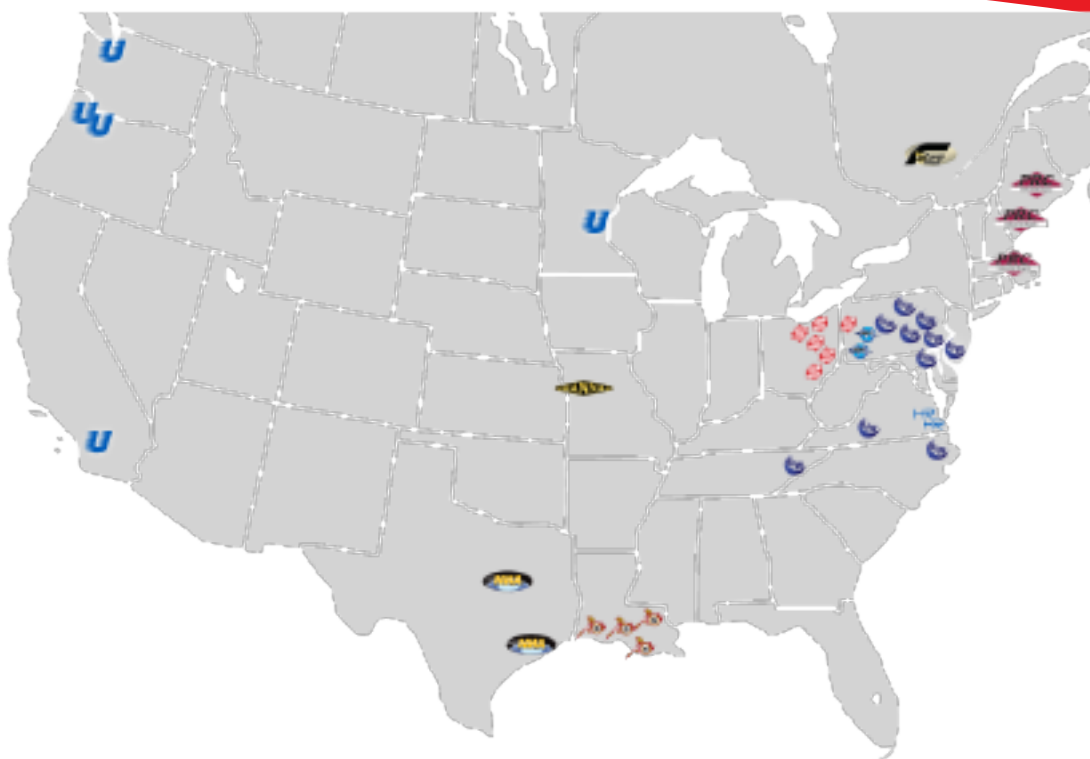


TRACK

Let us help you simplify your process for inventory management.

All visual inspections, test certificates, test schedules and history can be stored in an online, cloud database.

Run reports to notify you when a hose is due for review and download the file.



Allied Rubber & Supply

(800) 242-1670
• Wampum, PA
• Butler, PA



Hanna Rubber Company

(800) 501-3035
• Kansas City, MO



PRC Industrial Supply

(800) 322-3100
• Portland, ME
• Bangor, ME



Stewart Hunt

(781) 272-4411
• Burlington, MA



Spartan Industrial Marine

(885) 873-7859
• Houma, LA
• Lafayette, LA
• Belle Chasse, LA
• Golden Meadow, LA



R/W Connection

(800) 355-7974
• Landisville, PA
• Montoursville, PA
• Allentown, PA
• West Chester, PA



Advanced Fluid Connectors

(717) 767-3880
• Emigsville, PA
• Glen Burnie, MD



Virginia Carolina Belting

(800) 348-4025
• Salem, VA
• Powell, TN
• Rocky Mount, NC



Cumberland Valve

(800) 310-1324
• Bridgeton, NJ



National Hose & Accessory

(800) 820-4673
• Pasadena, TX



Texas Rubber Supply

(214) 631-3143
• Dallas, TX



Summers Rubber Co.

(800) 886-5801
• Cleveland, OH
• Mansfield, OH
• Dover, OH
• Eastlake, OH
• Marietta, OH
• Akron, OH
• New Castle, PA



Unisource MFG

(800) 234-2466
• Portland, OR
• Kent, WA
• Santa Fe Springs, CA



Able Hose

(800) 229-2253
• Roseville, MN



Poly-Flow

(503) 493-0015
• Portland, OR



Hampton Rubber

(800) 482-4447
• Hampton, VA
• Norfolk, VA

WWW.SINGEREQUITIES.COM

