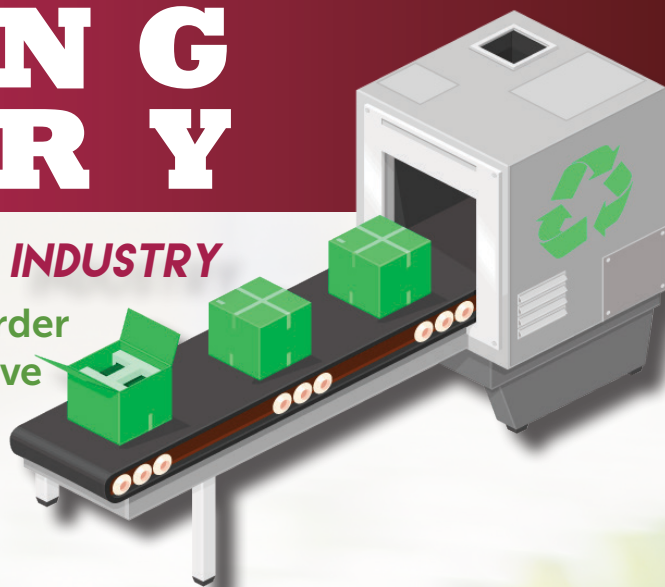


RECYCLING INDUSTRY

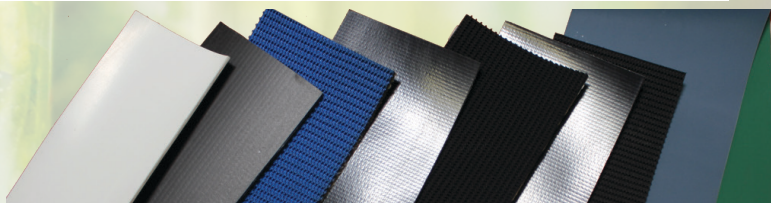
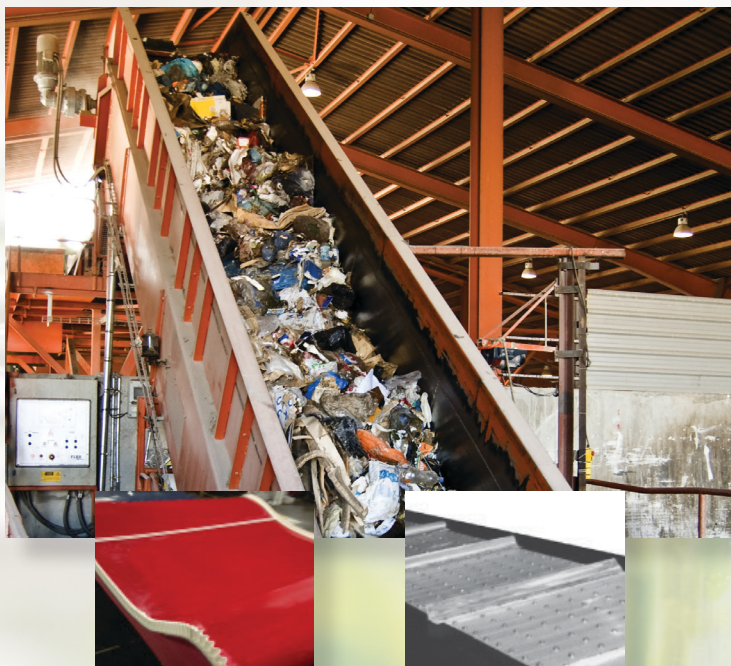
CONVEYING PRODUCTS TO MOVE INDUSTRY

From off the shelf conveyor belts to made-to-order fabrications, our customers rely on our innovative solutions backed by our large inventory.



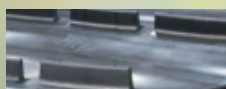
INDUSTRIES SERVED

- Material Refinery Facility (MRFs)
- Scrap Metal
- Mulch
- Waste to Energy (WTE)
- Construction and Demolition (C&D)
- E-Waste (computers, TVs, etc.)



CONVEYOR BELT TYPES FOR RECYCLING APPLICATIONS

- Moderate Oil Resistance (MOR)
- PVC
- Urethane
- Heavy-Duty Black Belt
- Rip-Stop
- Cleated Belts
- Eddy Current
- Optical Sorter Belts



T-Cleat



Eddy Current



Magnetic Separator



Durowall™



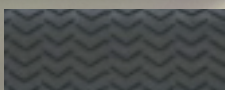
Chevron Belt



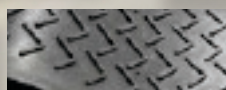
Herringbone



CUSTOMIZED FABRICATIONS



V-Cleat



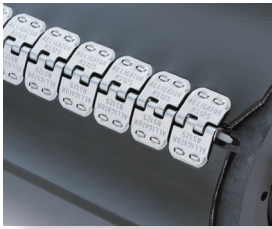
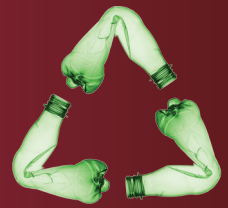
Deerhorn Cleat



Stewart Hunt
FLUID POWER SINCE 1966

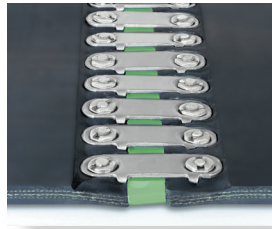


ADDITIONAL CONVEYOR BELT ACCESSORIES



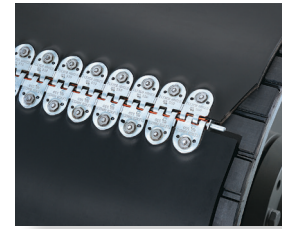
ALLIGATOR® STAPLE

Available in stainless steel. Fastener sizes of #62, 125, 187, 310 to give PIW range of 100-250. Ideal lacing for light-and-medium weight belt, such as bulk-handling recycled materials.



FLEXCO® BOLT SOLID PLATE

Commonly used on higher-tension main haulage belts used for highly abrasive materials such as sand, gravel and crushed stone. Specially formed teeth penetrate deep into the belt -- without damaging carcass fibers.



FLEXCO® BOLT HINGED

Ideal for applications requiring frequent belt-length alterations; the joints can be separated simply by removing the hinge pin. On-site installation requires only a portable hand or power tool.

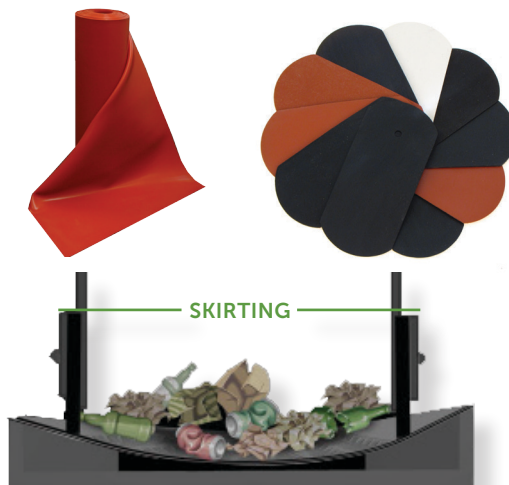


WITH INSTALLATION & VULCANIZATION SERVICES

21 WEST COMMERCIAL ST.
Portland, Maine 04101
Phone: 207-774-3993
Fax: 207-775-3351

337 PERRY ROAD
Bangor, Maine 04401
Phone: 207-947-4772
Fax: 207-990-5865

8 GARFIELD CIRCLE
Burlington MA 01803
Phone: (781) 272-4411
Fax: (781) 272-5172



CONVEYOR CONTAINMENT SKIRTSBOARD RUBBER

Improve your conveyor system and equipment performance by protecting it with skirting. Abrasion and weather resistant for tough applications in all types of environments.

Featuring 1,000 lb. tensile strength and 300% elongation in hardness of 55 - 60 durometer in gauge. (50 ft. rolls cut 4-12" or full slabs - 50 ft. roll x 48 inches wide.) PRC & Stewart Hunt also provide a full array of chute, hopper, bin and cyclone separator rubber -- with installation.

MATERIALS

**SBR RUBBER • GUM RUBBER • URETHANE • PTFE/
TEFLON • UHMW • OTHER HIGH PERFORMANCE
POLYMERS**



WWW.PRCINDUSTRIAL.COM
WWW.STEWARTHUNT.COM



Stewart Hunt
FLUID POWER SINCE 1966