



**GATES FOOD MASTER FOOD MASTER® DRY GOODS (50-150) SD HOSE (FORMERLY - 690SB)**

**Application:**

Transfer of bulk food products via suction, pneumatic or gravity systems where FDA sanitary tube is required. Examples: Flour, sugar, syrup and edible grains.

**Construction:**

**TUBE:** Type D2 (Natural Rubber). Sanitary FDA. White. 3/16" thick.  
**REINFORCEMENT:** Synthetic, high tensile textile with steel wire helix.  
**COVER:** Type D3 (Natural Rubber). Gray corrugated with burgundy spiral stripe.

**Specifications:**

- Sterilizable/autoclavable
- USP Class VI meets or exceeds:
- FDA CFR 177.2600
- USDA and 3A standards
- European pharmacopoeia 3.1.9 Fitt

**Temperature Range:**

- 50°F to 150°F
- Available from ½" to 1" I.D. Consult Foster for working pressures.

HOSE I.D.		HOSE O.D.		MAX. W.P.		MBR	Wt. Per Ft.	LENGTH	STOCK OR MTO
(in)	(mm)	(in)	(mm)	(psi)	(Bar)	(in)	(in)	(ft)	
1 1/2	38.1	2.23	56.6	150	10.3	10.0	1.24	100	MTO
2	50.8	2.75	69.9	150	10.3	12.0	1.76	100	STOCK
2 1/2	63.5	3.23	82.0	125	8.6	15.0	2.00	100	MTO
3	76.2	3.75	95.3	100	6.9	18.0	3.00	100	STOCK
4	101.6	4.71	119.6	75	5.2	24.0	3.00	100	STOCK
5	127.0	5.75	146.1	55	3.8	30.0	3.98	50	STOCK
5	127.0	5.75	146.1	55	3.8	30.0	4.30	100	MTO
6	152.4	6.91	175.5	50	3.4	36.0	5.88	50	STOCK
6	152.4	6.91	175.5	50	3.4	36.0	5.88	100	MTO

Custom sanitary assemblies upon request

Fittings & Adapters



Sanitary Triclamp 316SS



Step Up Sanitary Triclamp 316SS



Sanitary Mini Triclamp 316SS



PFA Encapsulated Sanitary Triclamp



Solid PFA Sanitary Triclamp



Sanitary Triclamp 90-Degree 316SS



Bevel seat with nut 316SS



Sanitary Tube 316SS



Sanitary Male I-line 316SS



Female I-Line 316SS



Female Camlok 316SS



PFA Encapsulated 316SS Female Cam



FDA White Polypropylene Female Cam



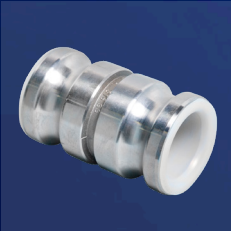
Male Camlok 316SS



PFA Encapsulated Male Camlok



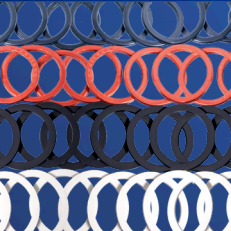
Male Pipe 316SS



PFA Encapsulated Male Cam Spool



PFA Encapsulated Male Cam X-Flange



Camlok Gaskets



Sanitary Clamps & Gaskets



Foster Mechanical Corporation

10452 Baur Blvd. St. Louis, MO 63132  
Phone: 314.997.3111 • Toll Free: 800.966.8111 • FAX: 314.997.6726 • [www.fostershose.com](http://www.fostershose.com)

FOSTER 2001 SERIES FDA HOSE

Sanitary Hose & Adapters



Dairy | Pharmaceutical | Food



Since 1928





#### FW 2001 Hose

**Application:**

Flexible suction and discharge hose for both dry food and liquid transfer. Suitable for transferring edibles in gravity flow, pressure or suction service.

**Construction:**

**Tube:** White Chemivic™ synthetic rubber (FDA/USDA compliant and conforms to 3-A sanitary standard 18-03)

**Cover:** Corrugated White EPDM synthetic rubber (wrapped impression)

**Reinforcement:** Two spiral-plied synthetic fabric with double galvanized helix

**Safety Factor:** 4:1

**Temperature Range:** -25°F to 230°F (-31°C to 110°C)

Sizes	ID mm	OD mm	Wt (lb/ft)	WP psi	BP psi
1/2"	19.1	30.4	0.47	250	1000
3/4"	12.7	24.3	0.37	250	1000
1"	25.4	36.6	0.58	250	1000
1-1/2"	38.1	49.8	0.84	250	1000
2"	50.8	62.8	1.12	250	1000
3"	76.2	89.9	1.91	250	1000
4"	101.6	115.7	2.71	200	800



#### FG 2001 Food & Beverage Hose

**Application:**

Flexible suction and discharge hose for both dry food and liquid transfer. Suitable for transferring edibles in gravity flow, pressure or suction service.

**Construction:**

**Tube:** White Chemivic™ synthetic rubber (FDA/USDA compliant and conforms to 3-A sanitary standard 18-03)

**Cover:** Corrugated Grey EPDM synthetic rubber (wrapped impression)

**Reinforcement:** Two spiral-plied synthetic fabric with double galvanized helix

**Safety Factor:** 4:1

**Temperature Range:** -25°F to 230°F (-31°C to 110°C)

Sizes	ID mm	OD mm	Wt (lb/ft)	WP psi	BP psi
1/2"	19.1	30.4	0.47	250	1000
3/4"	12.7	24.3	0.37	250	1000
1"	25.4	36.6	0.58	250	1000
1-1/2"	38.1	49.8	0.84	250	1000
2"	50.8	62.8	1.12	250	1000
3"	76.2	89.9	1.91	250	1000
4"	101.6	115.7	2.71	200	800
6"	152.4	169.2	4.55	150	600



#### FR 2001 Food & Beverage Hose

**Application:**

Flexible suction and discharge hose for both dry food and liquid transfer. Suitable for transferring edibles in gravity flow, pressure or suction service.

**Construction:**

**Tube:** White Chlorobutyl (FDA/USDA compliant and conforms to 3-A sanitary standard 18-03)

**Cover:** Corrugated Red EPDM

**Reinforcement:** Spiral-plied synthetic fabric with dual steel helix wire

**Temperature Range:** -30°F to 220°F (-34°C to 104°C)

ID	ID mm	OD (in.)	OD (mm)	WP psi	BP psi	Wt (lb)
1-1/2"	38.1	2.0	50.8	250	1000	0.09
2"	50.8	2.5	63.7	250	1000	1.17
3"	76.2	3.6	91.3	250	1000	2.18

#### FB 2001 Food & Beverage Hose

**Application:**

Flexible suction and discharge hose for both dry food and liquid transfer. Suitable for transferring edibles in gravity flow, pressure or suction service.

**Construction:**

**Tube:** White Chemivic™ synthetic rubber (FDA/USDA compliant and conforms to 3-A sanitary standard 18-03)

**Cover:** Corrugated Blue Chemivic

**Reinforcement:** Two spiral-plied synthetic fabric with double galvanized helix

**Temperature Range:** -25°F to 230°F (-31°C to 110C)

ID	ID mm	OD (in.)	OD (mm)	WP psi	BP psi	Wt (lb)
1-1/2"	38.1	2.0	49.6	250	1000	0.83
2"	50.8	2.5	62.5	250	1000	1.08
3"	76.2	3.6	91.2	250	1000	2.20



#### FORG 2001 Hose

**Application:**

Flexible suction and discharge hose for both dry food and liquid transfer. Suitable for transferring edibles in gravity flow, pressure or suction service.

**Construction:**

**Tube:** White Chemivic™ synthetic rubber (FDA/USDA compliant and conforms to 3-A sanitary standard 18-03)

**Cover:** Corrugated Orange EPDM synthetic rubber (wrapped impression)

**Reinforcement:** Two spiral-plied synthetic fabric with double galvanized helix

**Safety Factor:** 4:1

**Temperature Range:** -25°F to 230°F (-31°C to 110°C)

Sizes	ID mm	OD mm	Wt (lb/ft)	WP psi	BP psi
1-1/2"	38.1	49.8	0.84	250	1000
2"	50.8	62.8	1.12	250	1000



#### FGN 2001 Food & Beverage Hose

**Application:**

Flexible suction and discharge hose for both dry food and liquid transfer. Suitable for transferring edibles in gravity flow, pressure or suction service.

**Construction:**

**Tube:** White Chemivic™ synthetic rubber (FDA/USDA compliant and conforms to 3-A sanitary standard 18-03)

**Cover:** Corrugated Green EPDM synthetic rubber (wrapped impression)

**Reinforcement:** Two spiral-plied synthetic fabric with double galvanized helix

**Safety Factor:** 4:1

**Temperature Range:** -25°F to 230°F (-31°C to 110°C)

Sizes	ID mm	OD mm	Wt (lb/ft)	WP psi	BP psi
1-1/2"	38.1	49.8	0.84	250	1000
2"	50.8	62.8	1.12	250	1000