

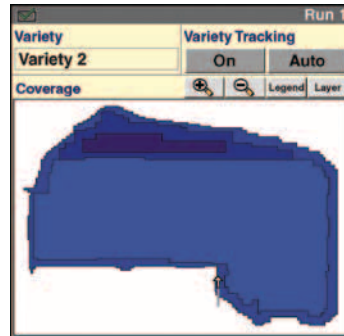
Case IH Variety Tracking Quick Reference

REQUIREMENTS

The Case IH Variety Tracking function, like any other technological function, is made to enhance the abilities of the grower to better suit their operation. There are a few basic requirements that come along with the new technology.

WHAT YOU NEED

- AFS Desktop Software Version 11.0 or higher
- Accurate As-Applied planting data
- AFS Pro 600 or AFS Pro 700 Software Version 26* or higher
- Generic Combine, 88 Series, or Axial-Flow Combine Vehicle Software
 - Precision Farming Application
 - Yield Monitoring Application
 - Variety Zone Application
- GPS Receiver on combine
- Formatted or clean memory device (PCMCIA for AFS Pro 600, USB for AFS Pro 700)



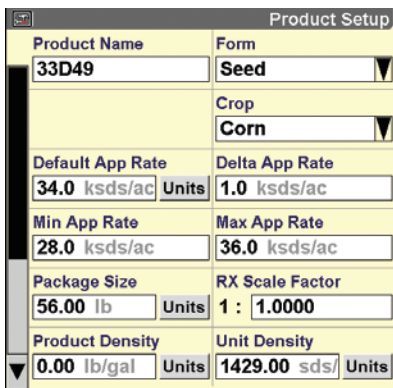
Variety Tracking Run Screen

USING VARIETY TRACKING

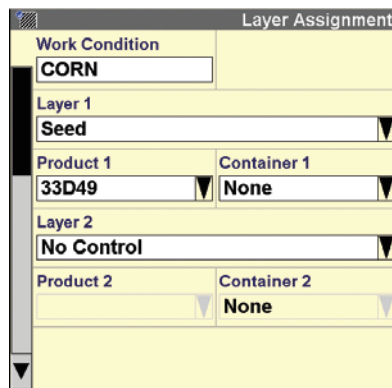
Step One: Product Setup

Variety Tracking starts with the Planter.

- Accurate planting data must be recorded to allow Variety Tracking to function properly during harvest.
- Varieties need to be recorded as Products in the layer assignments.



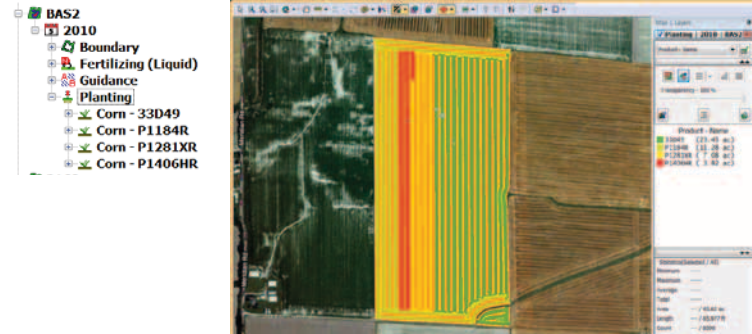
Product Creation in AFS Display



Layer Assignment in AFS Display

Step Two: Load Planting Data to Desktop Software

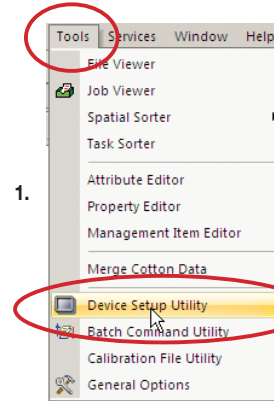
This simple transfer from the AFS unit to the computer allows for it to properly function during harvest” to “from the planter display to the desktop software allows for Case IH or other branded data to be properly formatted for export to the AFS yield monitor display.



Planting Data Shown

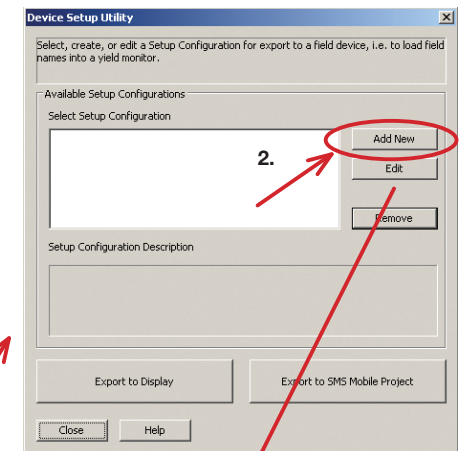
Step Three: Device Setup Utility

1. Use the Device Setup Utility – (Tools>Device Setup Utility)
2. Select “Add New” in Device Setup Utility.
3. Create a name for the Set-up Configuration.
4. Click Next.



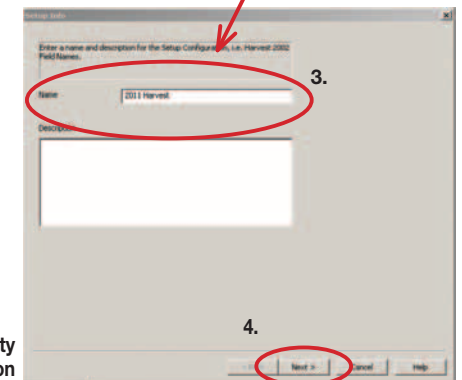
1.

Tools>Device Setup Utility



2.

Device Setup Utility



3.

4.

Setup Utility Configuration

Step Nine: Set Up the Display

The final step in the process is to take the memory device from the computer and put it back into the display unit. Then the grower chooses what run screen the data is placed on for harvest. That is done through the Toolbox Layout screen.

1. Insert the memory device into the AFS Pro 600 or AFS Pro 700 display.
2. Turn the key on.
3. Ensure that the display Interface Level is set to "Advanced" (Toolbox > Disp)
4. Choose the Run Screen you prefer to have the Variety Tracking information on.
5. Find the following User Defined windows in Toolbox > Layout

- **Variety Tracking**

- Turn on/off
- Auto/Manual modes

- **Variety**

- Auto-select Variety
- Manual select from pre-populated list (cannot add varieties on display)

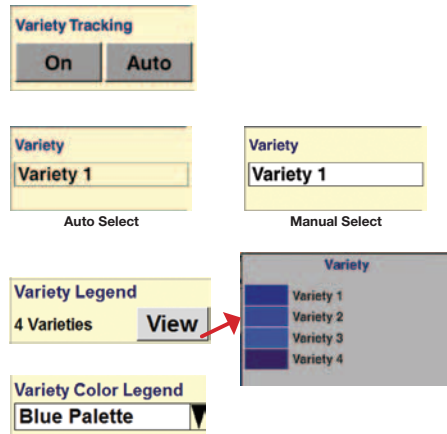
- **Variety Legend**

- Shows number of varieties in the field
- Allows the user to view the color assigned to each variety

- **Variety Color Legend**

- Blue Palette
- Pink Palette

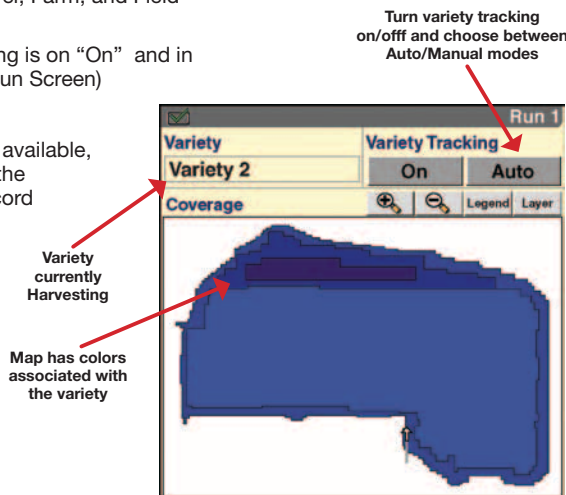
- **Map** (choice of 1x4, 2x3, 2x4, 2x5)



HARVESTING USING VARIETY TRACKING

Harvesting:

- Choose the desired Grower, Farm, and Field for data recording
- Check that Variety Tracking is on "On" and in "Auto" mode (From the Run Screen)
- Begin Harvesting
- If Variety Tracking data is available, the variety will appear in the "Variety Window" and record to a new Task.
- As a new Variety is reached, the Variety will change in the window and a new task will be created or a previous task containing the same variety will become active.



OBTAINING AN OVERALL SUMMARY

When harvesting is completed, or at anytime during the harvest, the grower can view a summary showing how each variety is performing directly on the display. The summary will show up in either the Summary 1 or Summary 2 section of the display monitor. This summary is beneficial in that the different crop varieties can be compared at anytime during or after the harvest.

After Harvesting:

- If desired, a summary of Variety data is available in the Performance section of the display.
- This data can then be put back into the computer for further analysis and archiving of the information.

Summary Data 1	
Summary Crop	Summary Variety
Corn	P1184R
Summary Tag	Moisture, Avg
None	----- %
Summary Grower	Area
Farm Way Down S	0.0 ac
Summary Farm	Weight, Dry
Farm Down South	0 lb
Summary Field	Bushels, Dry
BAS2	0 bu
Summary Task	Flow, Avg-Dry
11/04/27-16:27:22	----- bu/h
Apr 29, 2011	
1:39 pm	
Back	Profile
Sum1	Sum2
E-Notes	

AFS-8024-11-E Replaces: None

© 2011 CNH America LLC. All rights reserved. Printed in U.S.A.

Case IH is a registered trademark of CNH America LLC. Any trademarks referred to herein in association with the goods and/or services of companies other than CNH America LLC are the property of those respective companies.

CNH America LLC reserves the right to make improvements in design and changes in specifications at any time without notice and without incurring any obligation to install them on units previously sold. Specifications, descriptions and illustrative material herein are as accurate as known at time of publication, but are subject to change without notice. Availability of some models and equipment builds varies according to the country in which the equipment is used.

Visit us on the web at www.caseih.com

university

CASE IH
AGRICULTURE