

ELB As-Applied and Harvest Data NEW Requirements

2019 Protocol--Increased automation of ELB processing

Use of timestamp information in the files will allow the system to determine equipment travel paths quicker

Examples:

Timestamp to the second

	A	B	C
1	Longitude	Latitude	Date / Time
2	-93.8822	42.51498	4/25/2016 11:29
3	-93.8822	42.51498	4/25/2016 11:29
4	-93.8822	42.51498	4/25/2016 11:29

Timestamp to the
"sub second"

	A	B	F	G	H
1	Longitude	Latitude	Obj. Id	Yld Vol(Dry)(bu/ac)	Name
2	-98.5548	40.82958	1	65.39	2018-09-23T20:05:41.600Z
3	-98.5548	40.82959	2	65.39	2018-09-23T20:05:41.600Z
4	-98.5548	40.8296	3	65.39	2018-09-23T20:05:41.600Z
5	-98.5548	40.82962	4	65.39	2018-09-23T20:05:41.600Z
6	-98.5548	40.82963	5	65.39	2018-09-23T20:05:41.600Z
7	-98.5548	40.82964	6	65.39	2018-09-23T20:05:41.600Z
8	-98.5548	40.82966	7	65.39	2018-09-23T20:05:41.600Z

How do we collect timestamp info from common software?

1. Ag Leader SMS: Currently only provides timestamp info via a **.csv export instead of a shapefile**. As a result of this, Premier Crop Systems is addressing several issues to be able to work with csv exports in our system, starting with ELB processing.
 - a. *Please make sure to change a key setting in your copies of AgLeader SMS (see below) asap so timestamp data is retained upon import into SMS.*

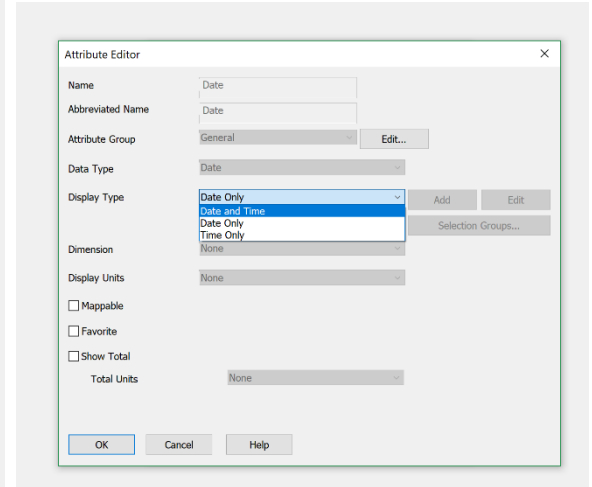
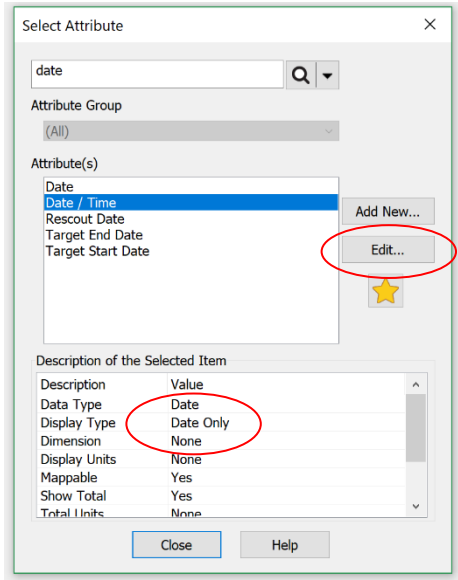
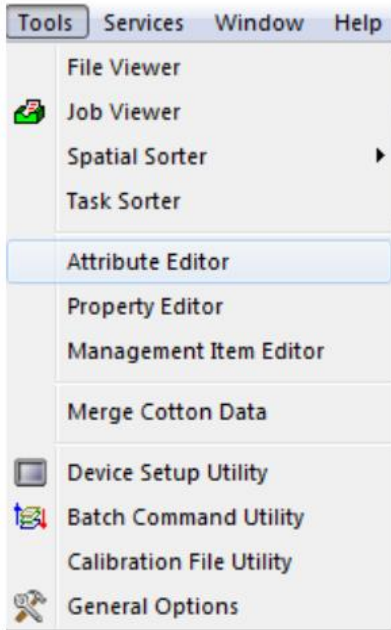
Setting to change in AgLeader SMS to retain timestamp:

This is a one time adjustment required to configure SMS - workflow from v19.0 of SMS, change the attribute of date/time to show both items (you may already be configured to do this)

- In Attribute Editor - Date and Date/Time will be defaulted to 'Date Only'
- Click Edit and change Display Type to 'Date and Time'



PREMIER PROCESS



2. MyJD: Shapefiles have ISO Timestamps, but if you need to import into AgLeader SMS for data editing/post calibration you need to be careful that the timestamp data is retained so it is available to export after your edits.
 - a. On import into AgLeader SMS you need to change the ISO Time attribute to a text field (like **Name** or Boundary Name) to preserve the ISO Time values

	A	B	F	G	H
1	Longitude	Latitude	Obj. Id	Yld Vol(Dry)(bu/ac)	Name
2	-98.5548	40.82958	1	65.39	2018-09-23T20:05:41.600Z
3	-98.5548	40.82959	2	65.39	2018-09-23T20:05:41.600Z
4	-98.5548	40.8296	3	65.39	2018-09-23T20:05:41.600Z
5	-98.5548	40.82962	4	65.39	2018-09-23T20:05:41.600Z
6	-98.5548	40.82963	5	65.39	2018-09-23T20:05:41.600Z
7	-98.5548	40.82964	6	65.39	2018-09-23T20:05:41.600Z
8	-98.5548	40.82966	7	65.39	2018-09-23T20:05:41.600Z

Send data to PCS for all fields as you normally do, but for fields with ELBs we request you ALSO submit .csv files for the relevant **as-applied and harvest data**.

