

## 5 - OPERATION

Select the **Back** button to go back to the **Home Screen**.



Select the **Run** button.



### 5.1 Normal Operation

a) Press **Master Start "Apply"** button



- This will start the pump if spraying conventionally
  - This needs to be engaged if mapping using AIM Command
- With AIM Command, turn pump on by setting switch to **A**
  - Turn pump off by setting Switch to **O**



b) Select **Auto** or **Manual** button

c) Select a **Rate 1** or **Rate 2** button (this was setup in section 2.7)



### 5.2 Automatic Product Control

a) Select the **Auto** button in the **Product Ctrl window** on Run Screen 1

b) Press the **Sp Liq Rt Ctrl** window. The rate control window will display. Press the bar graph or the arrow keys to adjust the target rate.



### 5.3 Manual Product Control

a) Select the **Manual** button in the **Product Ctrl** window on Run Screen 1

b) Press the **Sp Liq Rt Ctrl** window. The rate control window will display. Press the arrow keys to adjust the pump speed.



### 5.4 Optional Operations

a) Turn **Overlap Control** on or off if equipped with AccuBoom

b) Turn **Boundary Control** on or off if equipped with AccuBoom

c) Engage **Left/Right AutoBoom** control system (AutoBoom must be "Armed" in step 2.12)



## 6 - OPTIONAL SETUP

### 6.1 Custom Layout Screen – Add Countdown Container to Run 1 Screen

This operation can be used to change the layout of all of the available **Run** screens on the AFS Pro 700

Select the **Back** button to go back to the **Home Screen**.



Select the **Toolbox** Button.



Select the **Layout** tab.

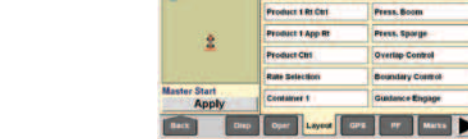
a) Change **Current Layout** to:

- Select new
- Enter new layout name

b) Select one preloaded options for the selected screen that are not needed. In this example **Left/Right AutoBoom** may not be needed. Select **Container 1** (this will be the container that was setup in step 2.9)



**Layout Screen** will look as follows.



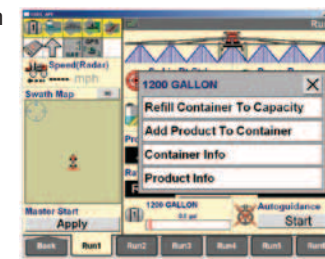
**Run1 Screen** will look as follows.



Press inside the containers bar graph area for options.



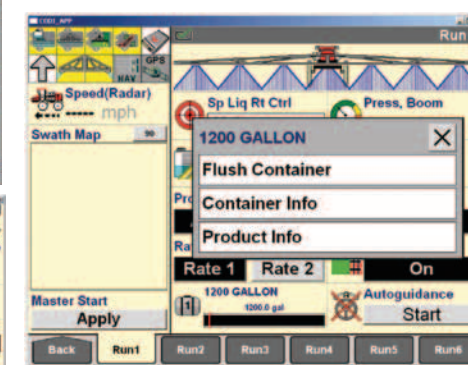
Select from one of the on-screen container options.



The on-screen container will now count down as product is applied.



If the tank is to be drained, press the screen inside the container's bar graph area and select from the on-screen options as shown below.



AFS-8027-12 Replaces: None

© 2012 CNH America LLC. All rights reserved. Printed in U.S.A.

Case IH is a registered trademark of CNH America LLC. Any trademarks referred to herein in association with the goods and/or services of companies other than CNH America LLC are the property of those respective companies.

CNH America LLC reserves the right to make improvements in design and changes in specifications at any time without notice and without incurring any obligation to install them on units previously sold. Specifications, descriptions and illustrative material herein are as accurate as known at time of publication, but are subject to change without notice. Availability of some models and equipment builds varies according to the country in which the equipment is used.

Visit us on the web at [www.caseih.com](http://www.caseih.com)



# Patriot® Sprayer v.27 Software for AFS Pro 700 Quick Reference

## INTRODUCTION

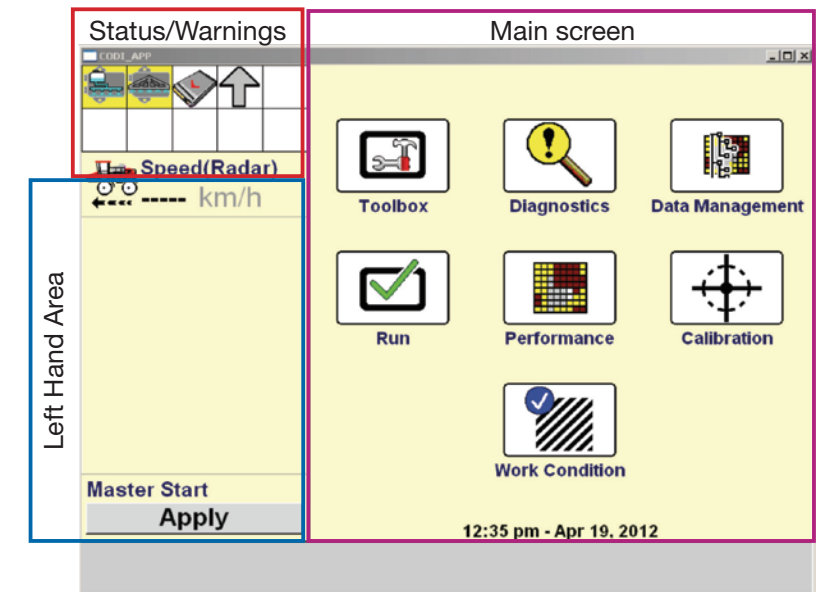
This quick reference card will help you to properly set up the AFS Pro 700 Display with v. 27 software for your Patriot sprayer.

This guide is to be used as quick reference only, please refer to the Operators Manual for specific information and procedures.

Insert a USB Memory Stick (p/n 84398840) into the display before turning the display on if any precision farming function such as mapping, swath control, prescription application, etc. will be used.

## 1 – GENERAL NAVIGATION

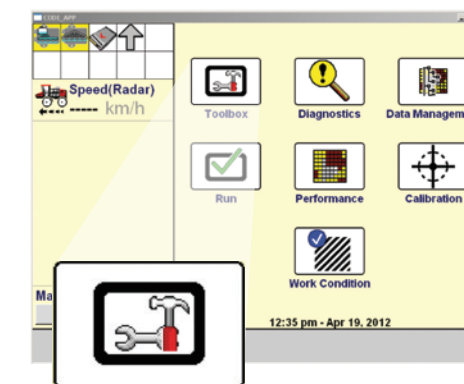
### 1.1 Main Screen



## 2 – SETUP

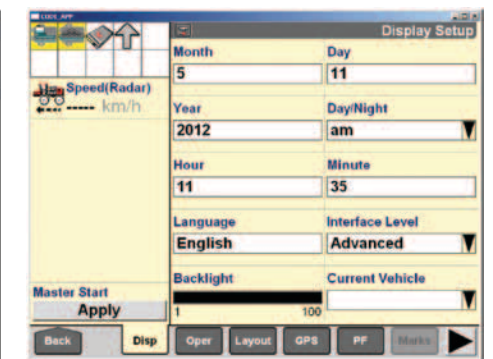
### 2.1 Home Screen

Enter **Toolbox** from the **Home Screen**.



### 2.2 Display Tab

Interface Level should be set to **Advanced**.





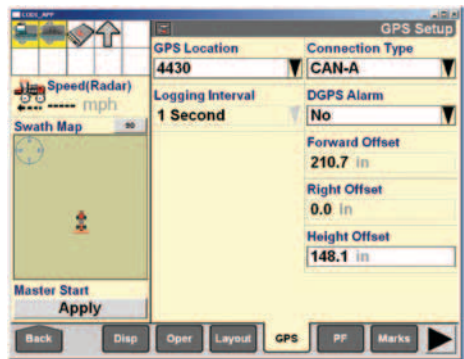
2.3 Operator Tab

- a) Select **Operator Tab**
- b) Create an **Operator**
- c) Select preferred **Units** of measure



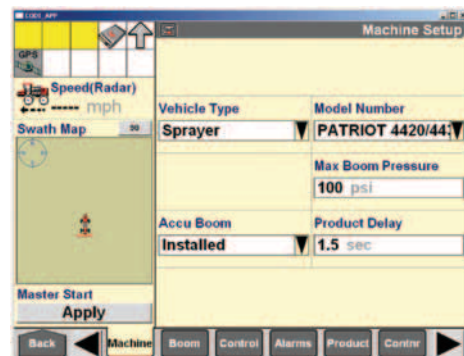
2.4 GPS Tab - Optional

- a) If GPS is being used, select which Patriot model you are using under **GPS Location**
- b) Enter **Height Offset** if different from default



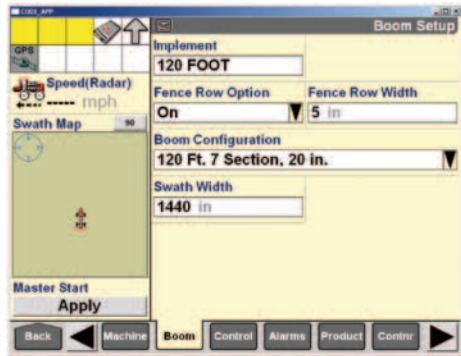
2.5 Machine Tab

- a) **Sprayer** should be pre-selected under **Vehicle Type**
- b) Select appropriate **Model Number**
- c) Enter **Max Boom Pressure** if different from default
- d) If unit is equipped with AccuBoom change setting to **Installed**
  - If setting is **Installed** enter **Product Delay** value (this is time from "Spray On/Off Switch" engaged until product hits the ground during normal operation. Recommended settings are from 0.7 to 2.0 seconds)



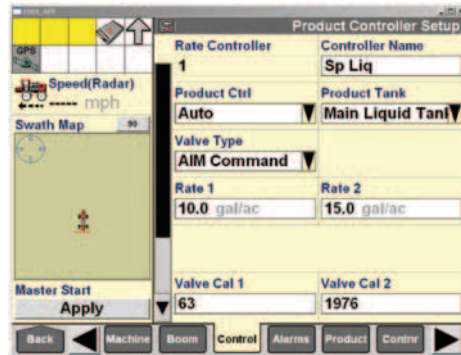
2.6 Boom Tab

- a) Under **Implement** select **New** and enter implement name
- b) Under **Fence Row Option**, select **On** or **Off** and enter **Fence Row Width**
- c) Under **Boom Configuration** select one of the pre-loaded configurations or create a custom configuration if required



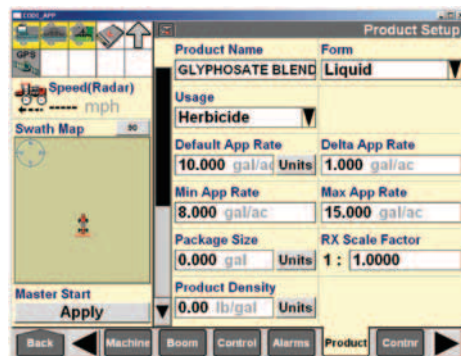
2.7 Control Tab

- a) Set **Valve Type** to:
  - **AIM Command** if spraying utilizing AIM Command
  - **PWM** if spraying conventionally
- b) Enter **Rate 1**
- c) Enter **Rate 2**



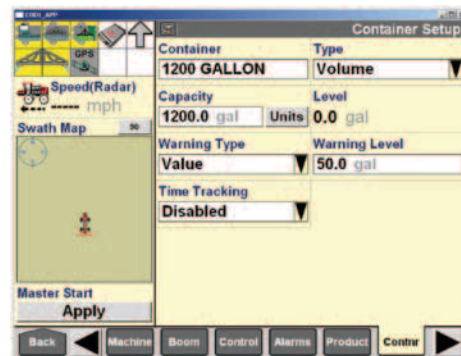
2.8 Product Tab

- a) Enter **Product Name**
- b) Select **Usage**
- c) Enter **Default Rate**
- d) Enter **Min. App Rate** and **Max App Rate** if needed



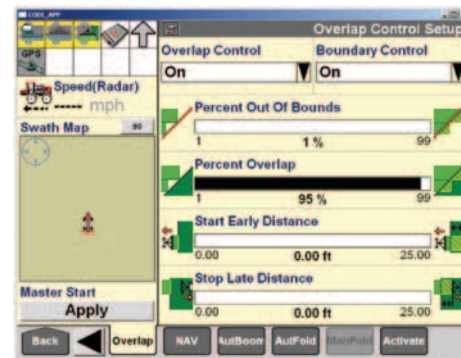
2.9 Container Tab

- a) Enter **Container name** to accurately represent your Main Liquid Tank
- b) Enter **Capacity**
- c) Select **Warning Type**
- d) Enter **Warning Level**



2.10 Overlap Tab – Optional (only with AccuBoom & GPS)

- a) **Overlap Control** and **Boundary Control** both need to be **On** in this screen if they are to be used during operation
- b) **Percent Out Of Bounds** refers to the percentage of a boom section extending outside the boundary of a field allowable before that boom section turns off
- c) **Percent Overlap** refers to the percentage of the overlapping boom section allowable before that boom section is automatically turned off
- d) **Start Early Distance** (Lead Distance) should only be changed once **Product Delay** has been accurately entered in **Step 2.5**
- e) **Stop Late Distance** (Lag Distance) should only be changed once **Product Delay** has been accurately entered in **Step 2.5**



2.11 NAV Tab – Optional

- a) Enter overall boom width for **Min. Turning Radius**
- b) Enter **Swath Finder Range** (acceptable range is 4 inches to 1/2 of the current boom width)



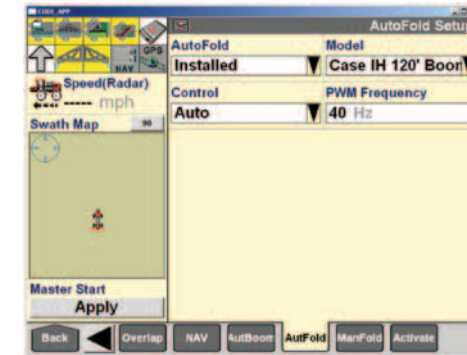
2.12 AutoBoom Tab – Optional (If Equipped)

- a) Set **AutoBoom** to **Installed**
- b) **Arm AutoBoom** must be set to **On** if it will be used during operation
- c) **Mode**:
  - **Ultra Glide** – Sonic sensors on boom
  - **Power Glide Plus** – Touchdown Wheels + Sonic sensors on boom
- d) **Sensitivity** – how sensitive is the boom to an input that would result in a change to an input
- e) **Speed** – how fast would the boom react to an input
- f) **Stability** – Stability of overall boom; set from 1-24; 1 is loose, 24 is very rigid



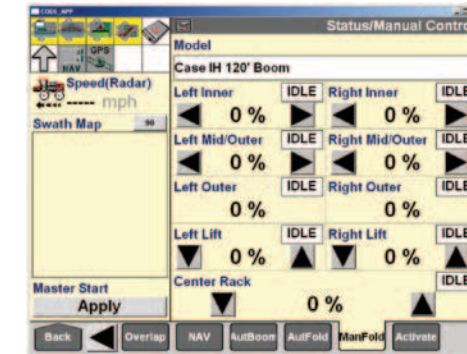
2.13a AutoFold Tab – Optional (Only on 120 ft. Boom)

- a) Select **Installed** if unit is equipped with AutoFold Plus



2.13b ManFold Tab – Optional (Only on 120 ft. Boom)

- a) Shows position of potentiometers during fold and unfold sequence, boom sections can be manually operated from this screen



Select the **Back** button to go back to the **Home Screen**.

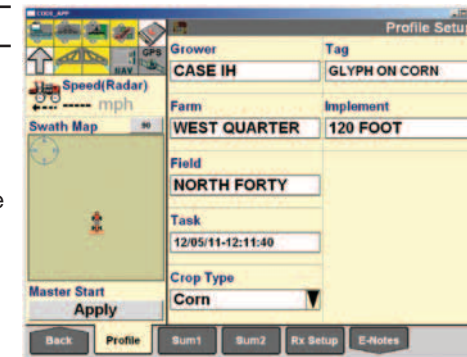


Select the **Performance** button.



3.1 Profile Tab

- a) Enter **Grower** name
- b) Enter **Farm** name
- c) Enter **Field** name
- d) Enter **Crop Type** and **Tag** (Tag is optional)



Select the **Back** button to go back to the **Home Screen**.

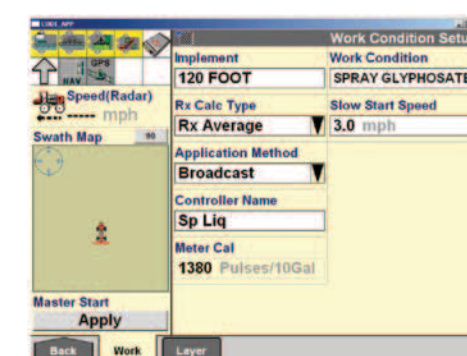


Select the **Work Condition** button.



4.1 Work Tab

- a) Enter or select a **Work Condition**
- b) Enter **Slow Start Speed** (minimum speed at which the sprayer has a reasonable spray pattern)



4.2 Layer Tab

- a) In **Layer 1** insure that **Sp Liq** is selected
- b) Select a **Product** (this was setup in section 2.8)
- c) Select a **Container** (this was setup in 2.9)

