

**C4T**

**CUSTOMS4TRADE**

# Agenda

 Introduction and housekeeping rules

 E-globalisation in general

 E-globalisation in CAS

 Demo

 Q&A

# Who are we?



**Jana De Borger**

Sales Executive  
Representative



**Nick Neesen**

Sales Executive  
Representative

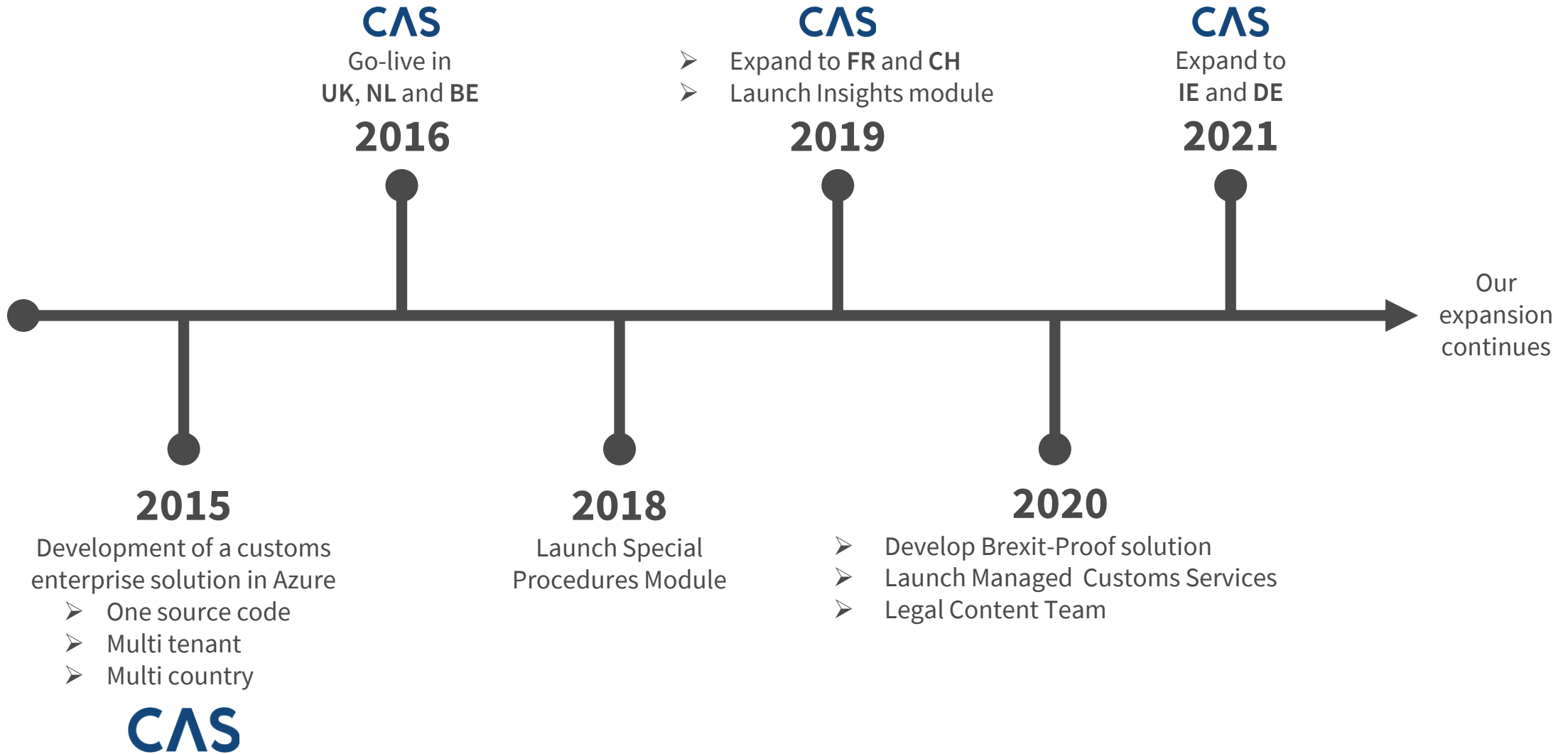
# Housekeeping rules

---

- Stay muted and off your camera the entire time
- Use the chat panel
  - Things you would like to know more about
  - Questions
  - Comments

**2004**

Founded as a consultancy firm specialised in Customs & Trade



# e-Globalisation

---

- What is it and who is impacted?
  - E-globalisation **accelerates** the customs process by **electronically consolidating customs declarations** on a weekly or monthly basis rather than sending a separate declaration for every transaction.
  - Companies that are currently using globalisation are **required to adopt e-globalisation by 1 February 2022** to continue to submit globalised declarations.
  - Companies with globalisation authorisation (EIDR)

# e-Globalisation

---

- Dataset is similar as for a normal declaration
- Validation is similar as a normal declaration (Tarbel, Authorisations, ...)
- Calculation of duties will be done by PLDA
- Possibility to provide your data on a regular basis
- After the validation, the statistics will be sent to the National Bank of Belgium.  
No separate report needed anymore

# e-Globalisation

---

- When do I have to file?
  - Globalisation on a monthly basis
    - 1st till last calendar day of the month
    - Globalisation declaration submitted by the 10th day of the following month
    - No use of Deferred payment (Client account)
  - Globalisation on a weekly basis
    - Window: Monday 00:00 till Sunday 24:00
    - Globalisation declaration to be submitted at the latest on the Thursday following the period concerned
    - Postponement of payment (Client account) is possible



# e-Globalisation

---

- How does it work in theory?
  - **Initial message** to customs authorities, triggering the process of globalisation for a given period
  - **Subsequent/supplementary declaration messages** allow the submission of item master data using XML messages. These include the full declaration data set, including item master data, just like a standard declaration.
  - **Final consolidated message** sent to customs at the end of the globalisation period confirming the submission of the subsequent/supplementary messages and triggering the end of the process. There is only one final closing message per LRN.

# Points of attention

---

- A lot more data < > full declaration
- Difficult to aggregate
- Immediate validation
- Monitor the process continuously
- Subsequent declaration messages regularly (1-3 days after shipment)
- Avoid performance issues
- Supplementary declaration per shipment (risk analysis)
- Extra Data Controls

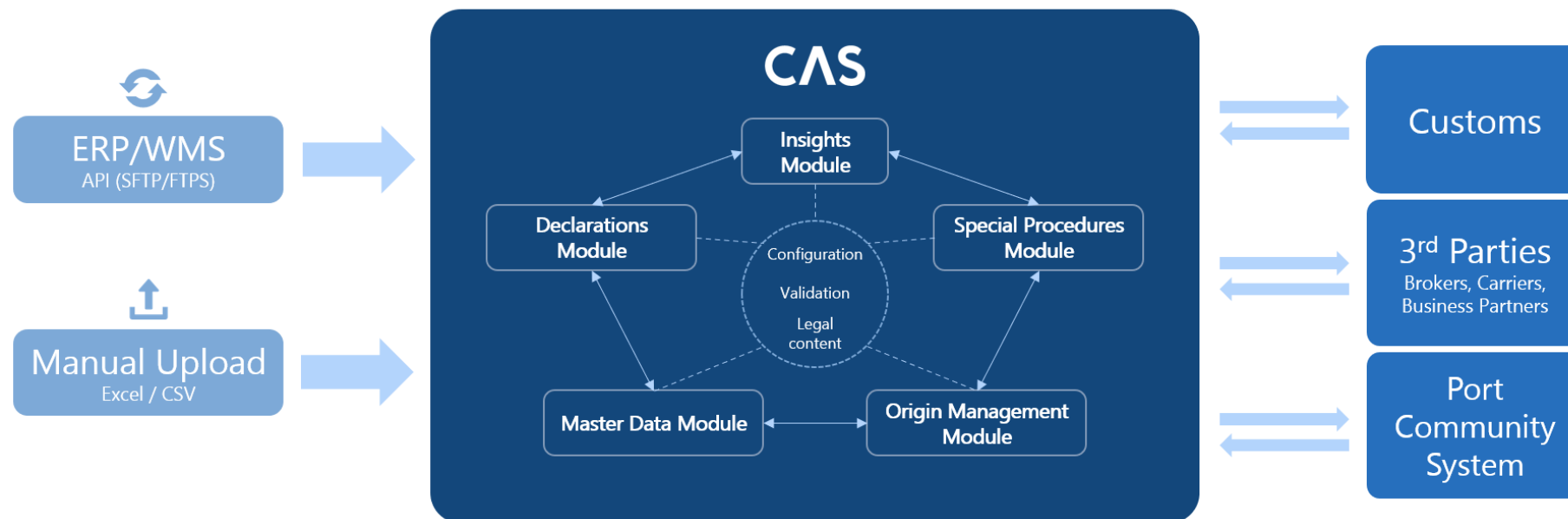
# E-globalisation in CAS

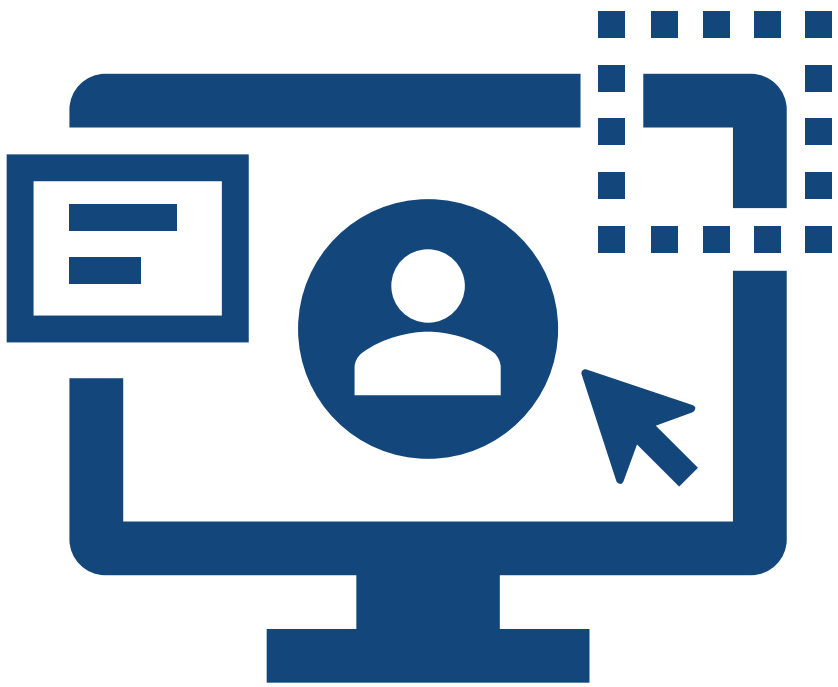
---

- Embedded in the CAS Declarations Module
- Authorisation set up
- Can make use of Master Data
- Easy integration (Customs Shipment) and notifications
- Aggregation options in CAS (filing of subsequent messages)
  - 1 EIDR = 1 subsequent message
  - Maximize subsequent message size > 999 entries
  - Daily recurrent subsequent submission
- Reporting & dashboards
- **Automatic** grouping strategy based upon Consignee & Customs Procedure Code
- When: Delivery in May 2021

# Integration

- Integration using the existing **Customs Shipment** interface
- No additional data elements to be provided. Dataset equal to the regular PLDA Import Declaration





Demo

# Summary

---

- E-globalisation within Standard Declaration Module
- Separate process
- Automated & Digitised process
- Clear overview/visibility of the workflow
- Automatic grouping strategy based on consignee & CPC

# C4T

Bankstraat 30  
2811 Mechelen  
info@customs4trade.com  
+32 15 46 08 46



[www.customs4trade.com](http://www.customs4trade.com)