

LET'S GO PLACES, TOGETHER

Routing, scheduling, visualization and navigation solutions - completely customizable for your customers. Our solutions can be used independently or as companion components to build end-to-end applications.

We've helped numerous technology providers use commercial map intelligence to turn their customers' challenges into business opportunities. Here's how:

- Our solutions are specifically designed for the entire commercial vehicle routing workflow, allowing for accurate data specific to your customers needs.
- Our highly configurable SDKs and interactive APIs are scalable and flexible, allowing you to adapt with your business growth.
- We're dedicated to helping you throughout your entire project - from onboarding to deployment.

✓ Commercial Routing & Distance	✓ Fleet Routing & Scheduling
✓ Mapping & Visualization	✓ Commercial Navigation
✓ Trip Management & ETA Alerting	✓ Delivery Time Window Optimization
✓ Driver Apps	✓ Reporting & Analysis

Talk to a Team Member | maps.trimble.com/contact

Seamless integration options for fast, flexible, remote deployments



Straightforward integration options that save time, IT resources, and support needs



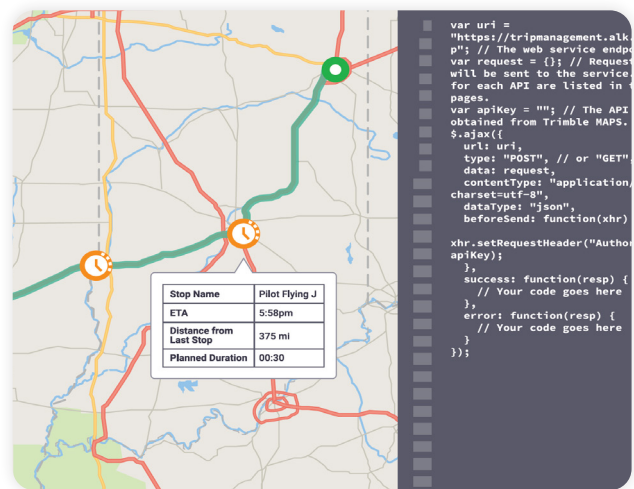
Support for web, mobile, and desktop solutions



Comprehensive online documentation library filled with code samples and interactive examples

We believe in building collaborative, supportive, long-lasting partnerships

- Valuable pre-deployment project and integration management
- Training resources and best practices guidance for implementation teams
- Dedicated regional team with local language support
- Flexible licensing models and competitive pricing
- Leverage our highly experienced and knowledgeable development, sales engineering, support, project management, and marketing teams to ensure a successful deployment



Get an API Key

Whether you're building a custom application or enhancing an existing one, we have the development tools you need.

Get up and running quickly at:
developer.trimblemaps.com

Talk to a Team Member | maps.trimble.com/contact

