

YOUR  
CLOUD FP&A  
SOFTWARE  
CHECKLIST



# Financial processes in practically every industry have been made easier and more efficient thanks to advancing software.

Now more than ever, there is a growing demand for cloud-based FP&A software, to help the Office of Finance shorten monthly close processes, and in turn, forecast scenarios in a dynamic environment. FP&A software has long been valued and considered useful, but is now essential to businesses wanting to properly budget, plan and forecast during unprecedented times.

Finance teams are looking to first build scenarios and then analyze its potential impact on the business. This includes identifying new performance drivers and forecasting financial outcomes. Using technology such as Cloud FP&A software, businesses can get to these outcomes much faster and with greater accuracy.



# WHAT IS CLOUD FP&A SOFTWARE?

Cloud FP&A software is designed to manage the financial and operational information of an organization. Using Cloud FP&A software, an organization can unify data from multiple source systems and instantly analyze information to produce actionable insights.



## WHY IS IT IMPORTANT?

Particularly if your business is running into challenges around budgeting and reporting using spreadsheets in Excel, Cloud FP&A software can offer solutions to accelerate your process.

The major benefit of Cloud FP&A software is that it works with your existing systems and allows for in-depth analysis.

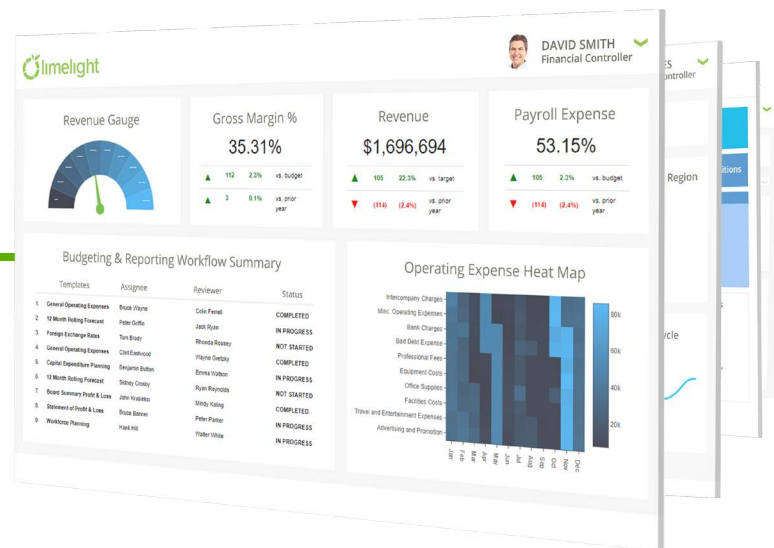
All of the struggles that surround spreadsheets, from juggling multiple versions to broken formulas and links resulting in more opportunities for errors, are solved with Cloud FP&A software. The software is designed to centralize your data and people, enabling teams to collaborate more on the same version of data, adding commentaries and attachments that tell the story behind the numbers. As well, Cloud FP&A software can visualize your data so managers have a better understanding of the information they are analyzing in real-time.

Cloud FP&A software provides forecasts and predictions of the performance of different areas in your organization. Your team can create models of multiple scenarios in the system and quickly see the outcome of different drivers. Finance teams can slice and dice their data and uncover potential growth.



# WHAT MAKES A GOOD CLOUD FP&A SOFTWARE PLATFORM?

Finance teams in any industry should look for Cloud FP&A software that offers features related to planning and analysis, goal setting and reporting. Your software should help you analyze the performance of your employees, as well as your business operations and cash flow. Modern Cloud FP&A software also provides detailed reports that are quickly generated and easy to distribute, helping managers and executives make the right decisions.



# HOW TO CHOOSE THE BEST CLOUD FP&A SOFTWARE FOR YOUR BUSINESS

If you're looking for a Cloud FP&A software system for the first time or looking to make a switch, this checklist can help with your evaluation. First, make sure to do a thorough assessment of your needs. Take note of what is working well in your process, and which parts can be improved. Then, prioritize your needs to help narrow down your vendor choices. The best Cloud FP&A software will address your requirements while also being equipped to scale with your business.

The following checklist details important factors to consider, even beyond the software itself. From ERP integration capabilities to budgeting, forecasting and reporting features, keep these requirements in mind when evaluating the best software for your team.



# ESSENTIAL REQUIREMENTS

VENDOR 1	VENDOR 2	VENDOR 3
-------------	-------------	-------------

## Ease of Integration

How well can this system integrate with our ERP and other systems?

Direct ERP integrations	<input type="radio"/>	<input type="radio"/>	<input type="radio"/>
Provides software connectivity to ERP general ledger table and subledger tables	<input type="radio"/>	<input type="radio"/>	<input type="radio"/>
Ability to drill-through to transactional data	<input type="radio"/>	<input type="radio"/>	<input type="radio"/>
Can source data from other systems such as payroll, HRIS and CRM	<input type="radio"/>	<input type="radio"/>	<input type="radio"/>

## Budgeting Capabilities

Can the system simplify my budgeting process?

Ability to bring in actuals and/or historical data	<input type="radio"/>	<input type="radio"/>	<input type="radio"/>
Enables real-time consolidation of financial and operational data	<input type="radio"/>	<input type="radio"/>	<input type="radio"/>
Has an Excel look and feel	<input type="radio"/>	<input type="radio"/>	<input type="radio"/>
Uses Excel formulas	<input type="radio"/>	<input type="radio"/>	<input type="radio"/>
Exports to Excel - Ability to export to Excel with formatting and formulas	<input type="radio"/>	<input type="radio"/>	<input type="radio"/>
Audit Trail - Ability to track who made what changes and when	<input type="radio"/>	<input type="radio"/>	<input type="radio"/>
Ability to lock down cells in the budget	<input type="radio"/>	<input type="radio"/>	<input type="radio"/>
Commentaries - Supports the addition of commentaries and attachments to budget	<input type="radio"/>	<input type="radio"/>	<input type="radio"/>
Consolidates commentaries to provide further context and justifications to budgets and variances	<input type="radio"/>	<input type="radio"/>	<input type="radio"/>
Line-items Details - Ability to enter subledger details with automatic rollups	<input type="radio"/>	<input type="radio"/>	<input type="radio"/>
Enables collaboration from all departments	<input type="radio"/>	<input type="radio"/>	<input type="radio"/>
Workflow - Supports the creation of Workflows to track progress and approvals	<input type="radio"/>	<input type="radio"/>	<input type="radio"/>
Enables dynamic changes: new accounts are automatically added to report templates	<input type="radio"/>	<input type="radio"/>	<input type="radio"/>
Spreading - Supports any data spread pattern for quicker budget input	<input type="radio"/>	<input type="radio"/>	<input type="radio"/>
Spreadsheet Upload - Ability to upload unformatted spreadsheets into the system	<input type="radio"/>	<input type="radio"/>	<input type="radio"/>

VENDOR  
1VENDOR  
2VENDOR  
3

## Forecasting Capabilities

### How can this system allow me to forecast?

Ability to develop projections and view impact in the system	<input type="radio"/>	<input type="radio"/>	<input type="radio"/>
Provides historical budget data, budget-to-actual data, non-financial data and project trends for future fiscal years	<input type="radio"/>	<input type="radio"/>	<input type="radio"/>
Monitors cash position and automates calculations with P&L and balance sheet data	<input type="radio"/>	<input type="radio"/>	<input type="radio"/>
Ability to execute multi-year budgets and 5-year plans	<input type="radio"/>	<input type="radio"/>	<input type="radio"/>
Ability to create 12-month and 18-month rolling forecasts	<input type="radio"/>	<input type="radio"/>	<input type="radio"/>
Allows users to dynamically re-forecast based on historical data	<input type="radio"/>	<input type="radio"/>	<input type="radio"/>
Performs "What if" scenarios based on changes in key inputs	<input type="radio"/>	<input type="radio"/>	<input type="radio"/>
Supports the application of drivers to Expense & Revenue Planning	<input type="radio"/>	<input type="radio"/>	<input type="radio"/>

## Reporting Capabilities

### How can this system allow me to view information across the entire organization?

Ability for users to create reports without IT or programming resources	<input type="radio"/>	<input type="radio"/>	<input type="radio"/>
Allows users to view and analyze reports in real-time	<input type="radio"/>	<input type="radio"/>	<input type="radio"/>
Ability to drill-through reports to transactional detail	<input type="radio"/>	<input type="radio"/>	<input type="radio"/>
Provides graphical analysis including displaying financial data as tables, graphs, and charts	<input type="radio"/>	<input type="radio"/>	<input type="radio"/>
Report Books - Ability to run and automatically distribute reports to specific users at scheduled times	<input type="radio"/>	<input type="radio"/>	<input type="radio"/>
Supports the export of reports to Excel and PDF	<input type="radio"/>	<input type="radio"/>	<input type="radio"/>
Ability to restrict access to specific reports	<input type="radio"/>	<input type="radio"/>	<input type="radio"/>
Ability to create standard financial statements such as these and more:			
Balance Sheet	<input type="radio"/>	<input type="radio"/>	<input type="radio"/>
Profit & Loss	<input type="radio"/>	<input type="radio"/>	<input type="radio"/>
Cash Flow Statement	<input type="radio"/>	<input type="radio"/>	<input type="radio"/>
Customer Analysis	<input type="radio"/>	<input type="radio"/>	<input type="radio"/>
Budget vs. Actual Report	<input type="radio"/>	<input type="radio"/>	<input type="radio"/>
Variance Analysis	<input type="radio"/>	<input type="radio"/>	<input type="radio"/>
Aging Reports	<input type="radio"/>	<input type="radio"/>	<input type="radio"/>
Management Reports	<input type="radio"/>	<input type="radio"/>	<input type="radio"/>
KPI Reports	<input type="radio"/>	<input type="radio"/>	<input type="radio"/>



VENDOR 1

VENDOR 2

VENDOR 3

## Software Capabilities

What are the security and user experience capabilities my team needs for our FP&A process?

Cloud-based	<input type="radio"/>	<input type="radio"/>	<input type="radio"/>
100% Browser-based for ease of access and distribution	<input type="radio"/>	<input type="radio"/>	<input type="radio"/>
Provides a user-friendly interface	<input type="radio"/>	<input type="radio"/>	<input type="radio"/>
Provides a single, unified interface for FP&A	<input type="radio"/>	<input type="radio"/>	<input type="radio"/>
Allows for multiple levels of authority in the system	<input type="radio"/>	<input type="radio"/>	<input type="radio"/>
Allows user permission configuration	<input type="radio"/>	<input type="radio"/>	<input type="radio"/>
Ability to lock down fields but allow users to view data	<input type="radio"/>	<input type="radio"/>	<input type="radio"/>
Allows ease of administration to add people to new views & reports	<input type="radio"/>	<input type="radio"/>	<input type="radio"/>
Allows for custom dashboards for each user	<input type="radio"/>	<input type="radio"/>	<input type="radio"/>

## Implementation Process

How much time and effort is required for the implementation?

Uses an In-house implementation team	<input type="radio"/>	<input type="radio"/>	<input type="radio"/>
Provides fixed fee projects	<input type="radio"/>	<input type="radio"/>	<input type="radio"/>

## Customer Success and Support

Does this system offer support when needed?

Includes a support team that will cater to your key objectives and needs	<input type="radio"/>	<input type="radio"/>	<input type="radio"/>
Provides training to staff in the use of the CPM software	<input type="radio"/>	<input type="radio"/>	<input type="radio"/>
Provides online resources, customer portal, help desk ticket system, monthly scheduled calls	<input type="radio"/>	<input type="radio"/>	<input type="radio"/>
Provides ad hoc technical support as needed	<input type="radio"/>	<input type="radio"/>	<input type="radio"/>
Provides ongoing system support post-implementation	<input type="radio"/>	<input type="radio"/>	<input type="radio"/>
Hosts customer events	<input type="radio"/>	<input type="radio"/>	<input type="radio"/>



VENDOR  
1

VENDOR  
2



VENDOR  
3

## Cost

Is this system affordable based on its capabilities?  
What is the cost of not implementing this system?

Annual subscription cost included	<input type="radio"/>	<input type="radio"/>	<input type="radio"/>
Implementation and training fees are fixed	<input type="radio"/>	<input type="radio"/>	<input type="radio"/>
Support and maintenance fees are included	<input type="radio"/>	<input type="radio"/>	<input type="radio"/>

## Comments

[golimelight.com](http://golimelight.com)   
[hello@golimelight.com](mailto:hello@golimelight.com)   
 1 (877) 931-9292 