

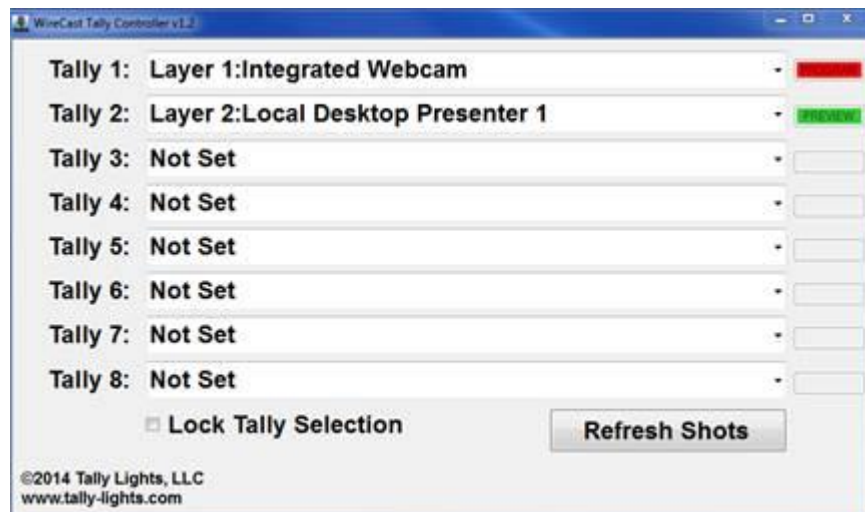


www.tally-lights.com
248-331-6793

Here's a basic rundown of how to use the Wirecast Tally application:

1. Install the program by double clicking the Tally Lights USB Controller.msi
2. Start the Telestream Wirecast application and configure the layers with Shots as appropriate.
3. Start the Tally Lights USB Controller for Wirecast application. If Wirecast is loaded, then all available shots will be loaded into the combo boxes next to each tally light.

(Note: if shots are added or moved in Wirecast, you can click the "Refresh Shots" button to get the most recent shots available.)



4. After the Shots are assigned to Tally lights, you can Lock the selection by clicking the 'Lock Tally Selection' checkbox.
5. As shots are selected in Wirecast, the PROGRAM and PREVIEW indicators will light next to each shot as appropriate.

Thanks,

Ted Kazmierczak
Senior Design Engineer