



HuddleShare Quick Start Guide



Quick Start Guide

This document walks you through the basic connection methods of the HuddleShare. For a more in-depth guide, please see the [User Manual](#).

Feature List:

- Supports screenshare of PC or Mac through WirelessMedia app, or through Apple screen mirror service
 - Supports smart device presentation through WirelessMedia app, or through Apple screen mirror service
- Supports remote viewing the active signal on HuddleShare by installed app on smart devices
- Support remote mouse to control the active source devices from other smart devices
- Supports VESA mount
- Supports Apple & iOS device compatibility through WirelessMedia app & Apple screen sharing service
- Supports WiFi Hotspot for connecting and sharing
- Supports 3.5mm line level audio output
- HDMI auto-switch
- Pre-Paired ShareKey USB 3.0 type A & C dongle for Mac & PC

Fig 1 & 2 below goes over the basic connection of the the HuddleShare

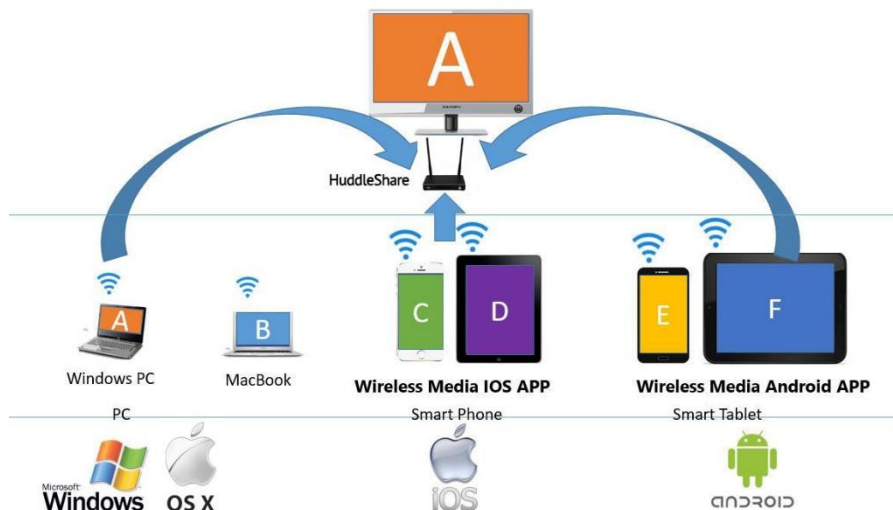


Fig 1

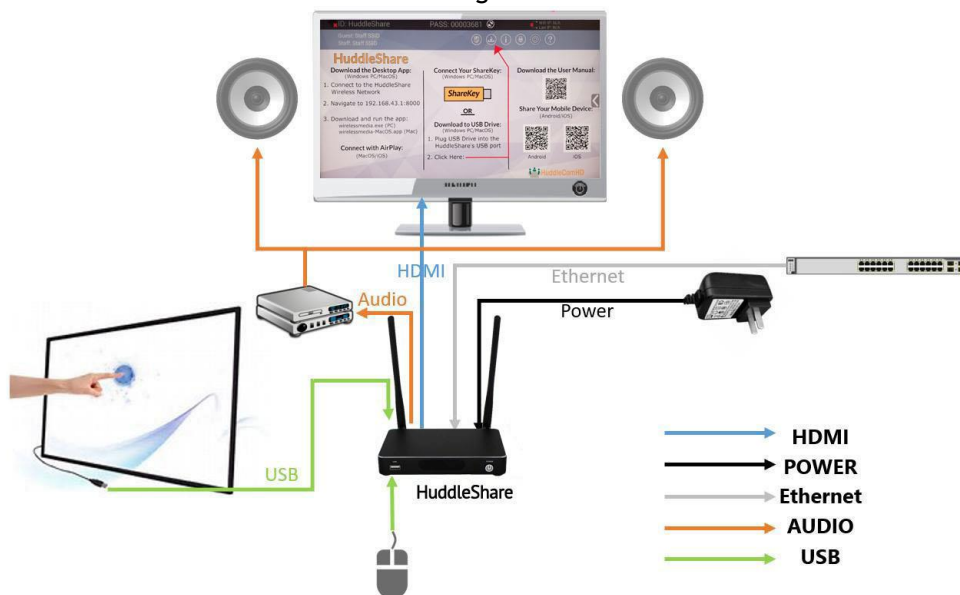
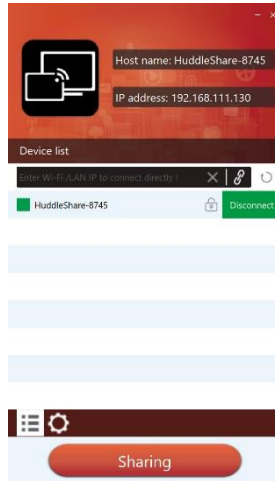


Fig 2

1. “ShareKey” USB 3.0 Dongle Mac/PC/Laptop

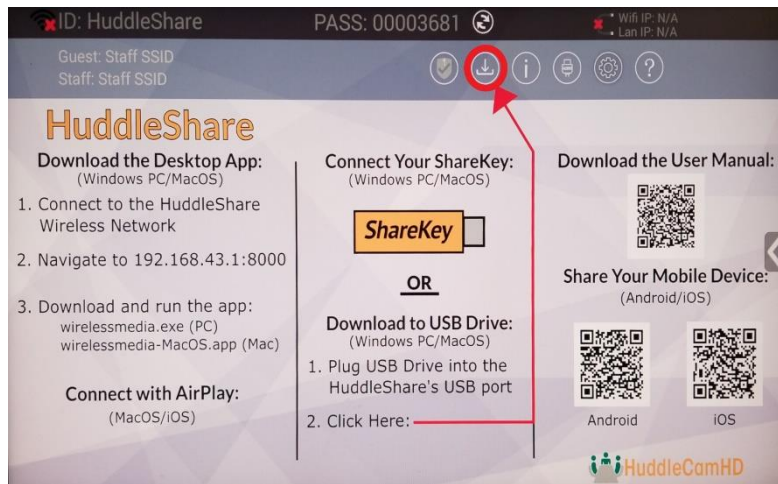
1. Connect the ShareKey to the Mac or PC using either the USB-A or USB-C connection.
2. The ShareKey comes pre-paired to the HuddleShare. By default, upon connection, “WirelessMedia” will open and begin sharing.



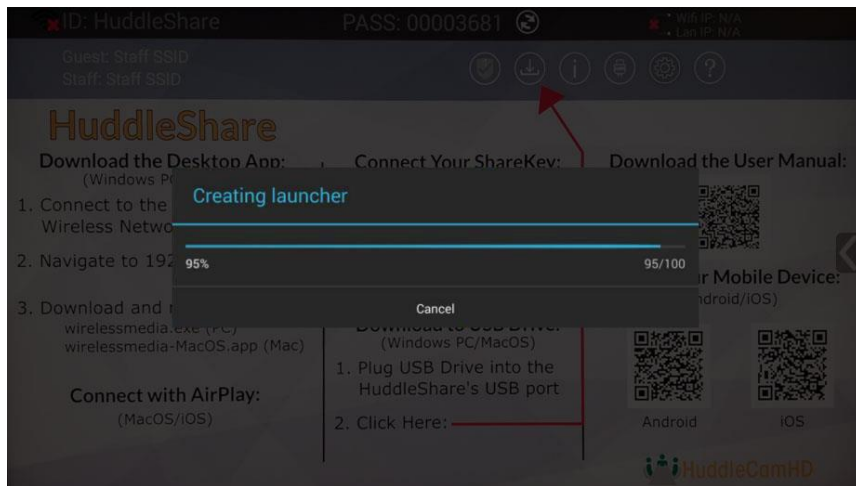
Note: If there is ever an update required to the ShareKey, connect it to the HuddleShare to re-sync, and update the WirelessMedia software version.

2. “WirelessMedia” PC/Laptop Connection

1. Connect a USB Drive to either of the HuddleShare’s USB ports.
2. Click the “Download” button from the home page as shown below.



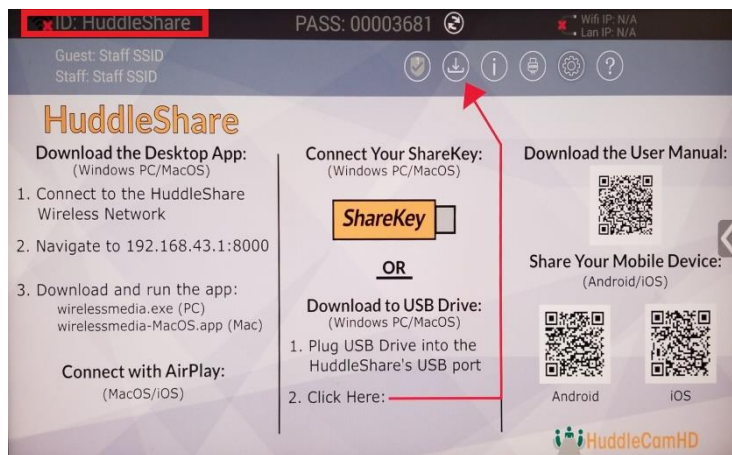
3. Once clicked, the download will begin. You will see a progress bar as shown below. Once the download is complete, you will receive the message “Succeed to create launcher, they are in directory / USB DISK / Launcher”



4. Simply disconnect the USB drive from the Huddleshare and connect to your computer.
5. Launch the WirelessMedia PC client software from the USB drive, or copy it to your local PC.
6. Connect to the HuddleShare through the Device List and connect to begin sharing.

3. Enable portable hotspot:

1. Check the SSID & Password are shown on the Home Page, as shown below.

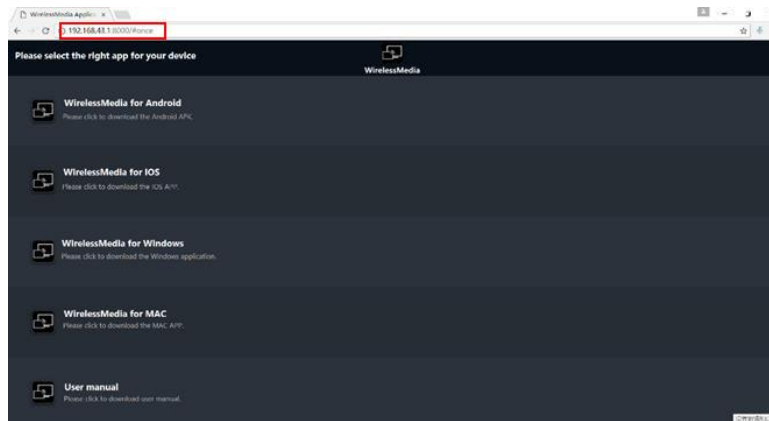


If it shows SSID: N/A, please refer to [\[Wireless Network\]](#) section in the User Manual

2. Using the WiFi connection from your computer, connect to the Hotspot of the HuddleShare
3. Using a web browser, type in the “WiFi IP” found in the top right of the HuddleShare’s screen





⚠ Attention: When it shows “N/A”, it means the HuddleShare is not connected to the LAN (Local Area Network) by CAT cable, or it failed to contact a DHCP server to obtain an IP address.

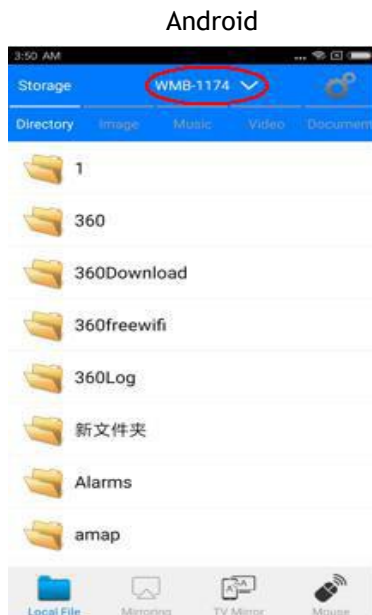


4. Download the WirelessMedia client that corresponds to your computer.
5. Launch the WirelessMedia PC client software and connect to the HuddleShare through the Device List to begin sharing.

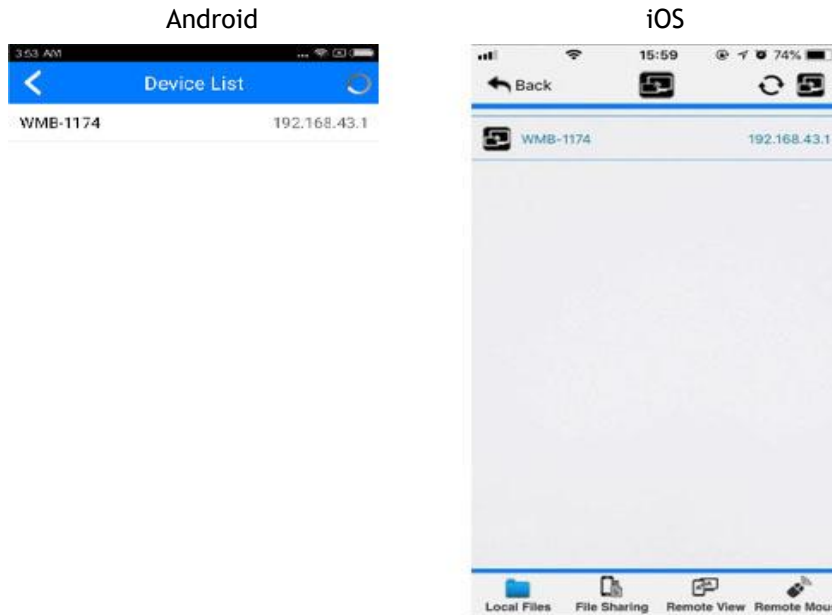
4. “WirelessMedia” for Mobile Devices

Download the WirelessMedia app by finding it in the appropriate store, or by scanning the QR code on the main screen of the Huddleshare.

1. Once the WirelessMedia app has been installed on your mobile device, connect to the WiFi Hotspot being output by the HuddleShare
2. Open the WirelessMedia application on your mobile device. You will see the Home Page of WirelessMedia. To open the Device List, please click the button “” on Android; and click the button “” on iOS as shown below:



3. Click the found device to connect to the HuddleShare.



4. After completing the pairing, it will display “Welcome ****” on the Home Page. For example, if we connect a Samsung Galaxy 19300, it will display “Welcome GT-19300”, as shown below.



5. At this point, the pairing between HuddleShare and mobile device is complete and ready to present.

5. Mobile Device Screen Mirroring

- For iOS devices, please swipe up from bottom of display to open control center and enable “Airplay”. From there, select the HuddleShare from within the app to start mirroring to the main screen.
- For Android 5.0+ devices, please click the Device List to select the target HuddleShare and click the Mirror icon on the main interface of the WirelessMedia APK for Android.
- For Android devices lower than 5.0, please click the Local Files icon to select the sharing picture, music, or video.

6. Mac OS PC/Laptop Screen Mirroring

The HuddleShare supports Apple’s screen mirroring service. Enable the service and choose the HuddleShare from the device list. Once connected, you will see your desktop on the HuddleShare’s main screen.