

Organizations have an idea of why they need a cloud strategy, but not how to execute. Our Cloud Operating Model is all about the “how”. Trace3 has a plan for cloud execution that covers architecture, people/process, tooling, and security for GCP, AWS, and Azure. This strategy will give you the confidence to execute.

Many of our customers are asking us to help them run and operate more efficiently in a multi-cloud world. Most are struggling with how to leverage the public cloud while maintaining cost, security, and control. Our experts show you exactly how successful organizations have made their way through the cloud journey.



CONNECTING BUSINESS AND TECHNOLOGY

Our team will share what we have learned over a decade of operating in the Cloud with hundreds of organizations. During this time, we will review the Trace3 Cloud Operating Model including:

1 WELL-ARCHITECTED FRAMEWORK

An industry-standard rubric of five functional areas of Cloud architecture.

- Cost
- Performance
- Security
- Reliability
- Operational Excellence

2 WELL-ARCHITECTED FRAMEWORK

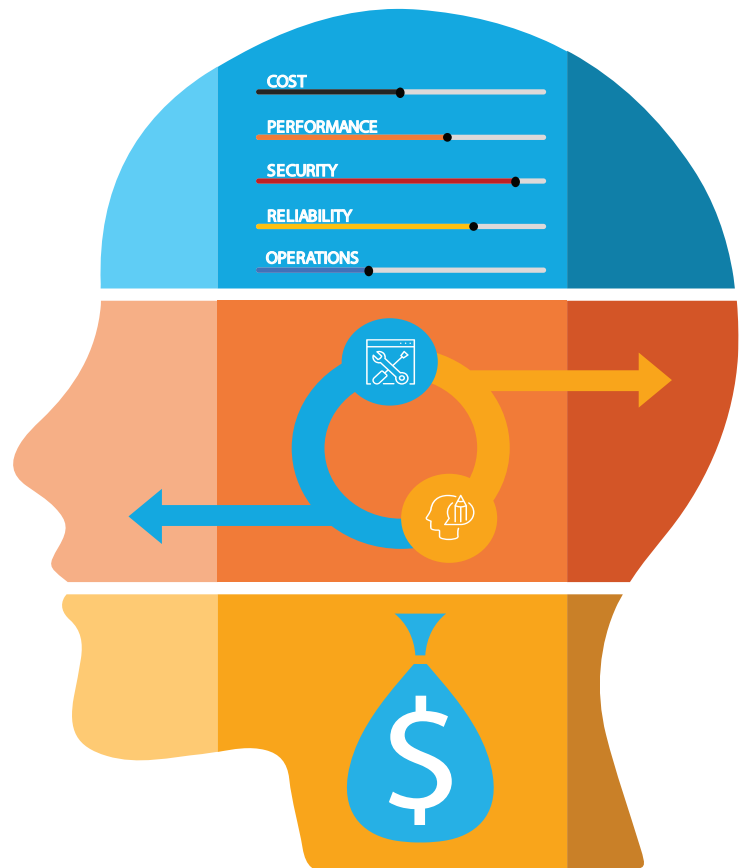
Seven patterns for handling application lifecycle management.

- Retain
- Relocate
- Rehost
- Replatform
- Refactor/Rearchitect
- Repurchase/Replace
- Retire

3 WELL-ARCHITECTED FRAMEWORK

Four economic models for finance management

- Private non-cloud
- Private IaaS
- Public IaaS/PaaS
- SaaS



OPERATIONAL OUTLINE

Trace3 will lead you through a customized inquiry foundation that examines the dimensions and maturity model of the Cloud Operating Framework. This is followed by an informative guided, self-assessment of people, process, and technology that results in a visual heatmap of your current state and areas of focus.

TOPICS

- Multi-Cloud Architectures – On-prem, public and private IaaS and SaaS
 - Data Security in a Zero Trust Model across all environments
 - Operational Efficiency – how we structure people and process for cloud
 - Designing resiliency in all environments
 - Cost modeling and optimization
 - Managing and tuning performance
 - Developing team and practices to power a cloud brokerage
-

DELIVERABLES

- At the end of the workshop you will better understand:
 - Your corporate cloud archetype
 - An overview of Cloud tactics and operations from successful organizations
 - A roadmap on how to operationalize Cloud capabilities in your own organization
-

CLOUD MATURITY ARCHETYPES

ADULTHOOD

How do we extend the Cloud Operating Model across locations and economic model?

- Broad applicability to legacy and new workloads
- Fully implemented Cloud Brokerage and Enterprise Architecture
- Standardized tools, skillsets, process and team structures across architectures and economic models

ADOLESCENCE

How do we develop and adopt cloud-native thinking?

- Typically net-new applications
- Paired with limited Agile approaches
- New tools, skillsets, process and team structures in isolated silos

INFANCY

How do we extend data center thinking to the cloud?

- Limited applications
- Traditional waterfall planning and design
- Existing tools, skillsets, process and team structures

