

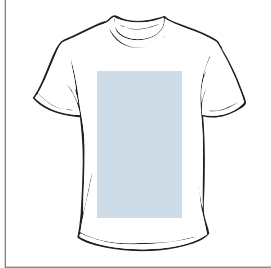
Imprint Sizing Guidelines

Below are general guidelines to help you determine the size of your imprint. These are the standard dimensions of imprints that will fit our most common print locations.

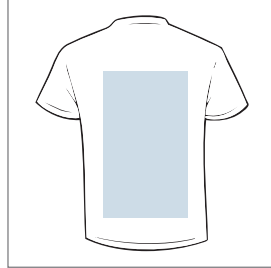
Please keep in mind the imprint size will determine which Screen and Pallet size, Standard or Jumbo, will be necessary to print your order.

Standard: Print less than or up to 13" w x 15" h | Jumbo: Print less than or up to 17" w x 22" h

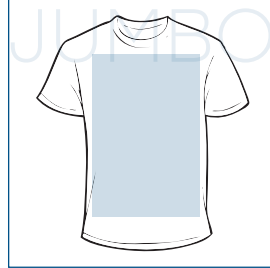
Adult Full Front - 13" x 18"



Adult Full Front - 13" x 18"



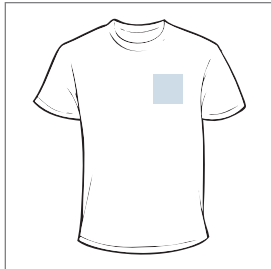
Adult Full Front - 17" x 22"



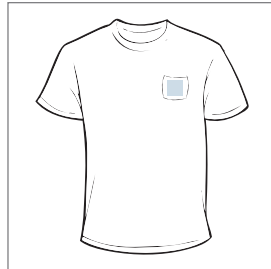
Adult Full Back - 17" x 22"



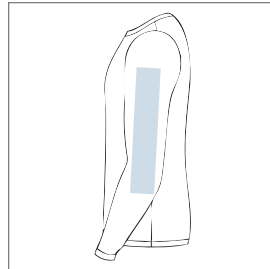
Adult Left Chest - 4" x 3"



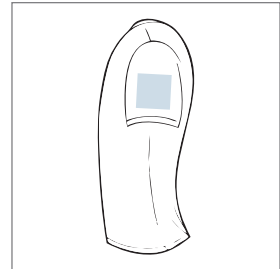
Adult Pocket - 2.75" x 2.75"



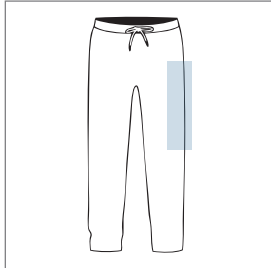
Adult Long Sleeve - 3.5" x 13"



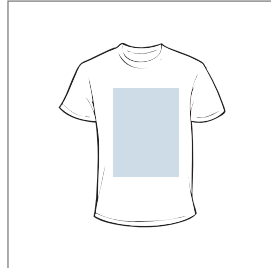
Adult Short Sleeve - 3.5" x 4"



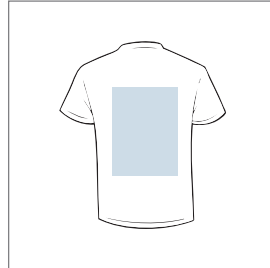
Leg Print - 5" x 13"



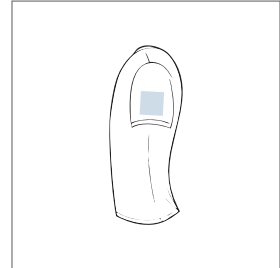
*Youth Full Front - XS-S 9" x 10"
M-XL 11" x 12"*



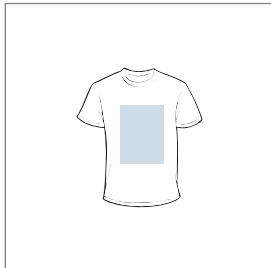
*Youth Full Back - XS-S 9" x 10"
M-XL 11" x 12"*



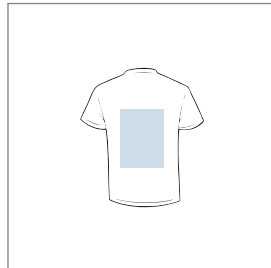
Youth Short Sleeve - 2.5" x 3"



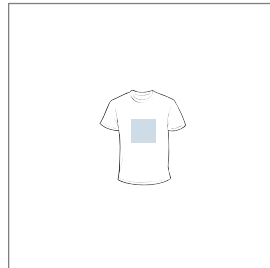
Toddler Full Front - 6" x 7"



Toddler Full Back - 6" x 7"



Infant Full Front - 5.5" x 5"



Infant Full Back - 5.5" x 5"

