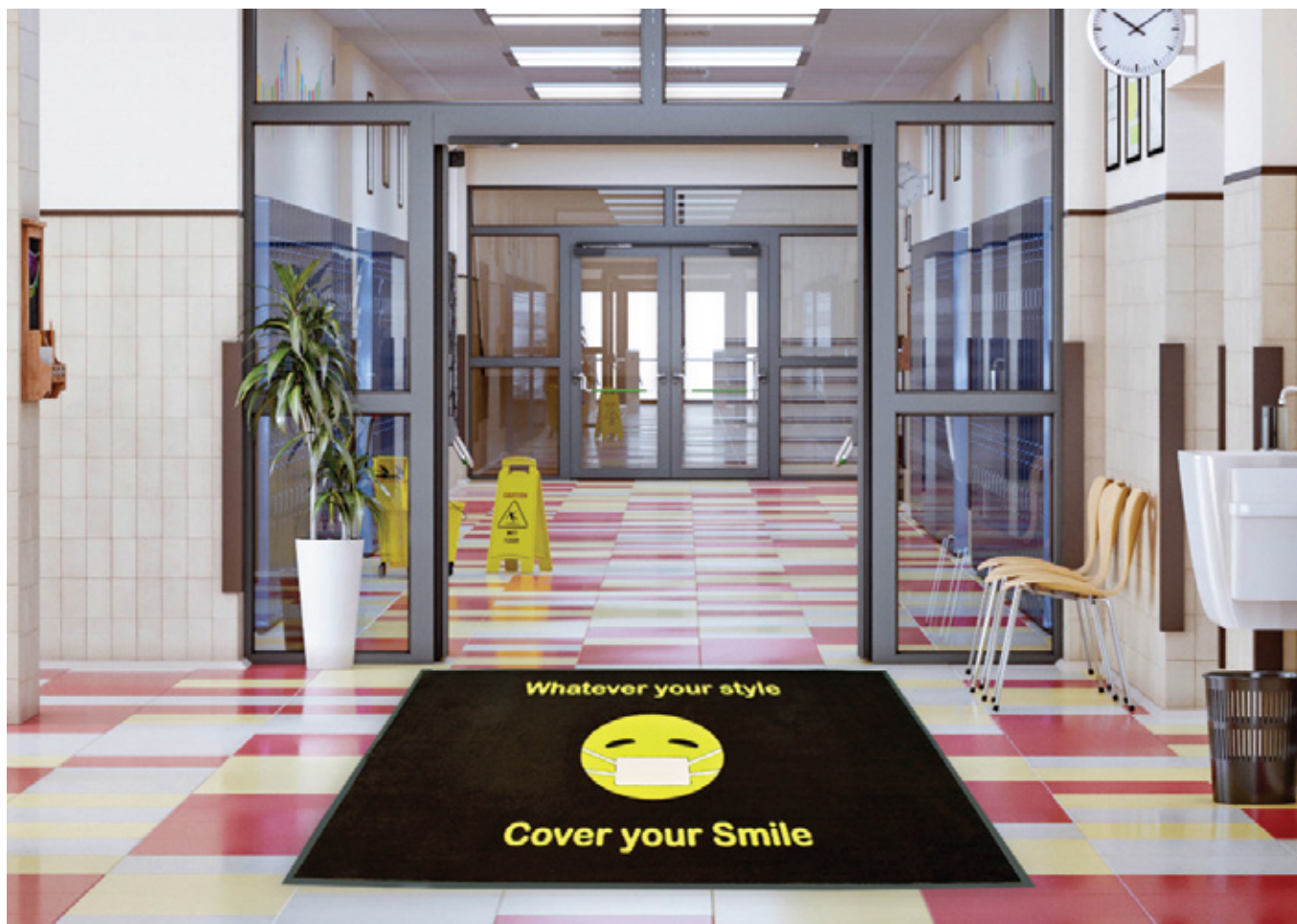


# Whatever Your Style... Cover Your Smile!



Whatever your style



Cover your Smile

These special mats will be a friendly reminder to cover your smile with the required face masks when entering buildings such as schools, offices, entrances, hallways etc.

Whatever your style



Cover your Smile

- Stock sizes include **3x5** and **4x6** both in the Horizontal and Vertical designs.

Crown is offering the best value price to help keep your floor clean and reminding everyone to do their part to protect against the spread of COVID-19.



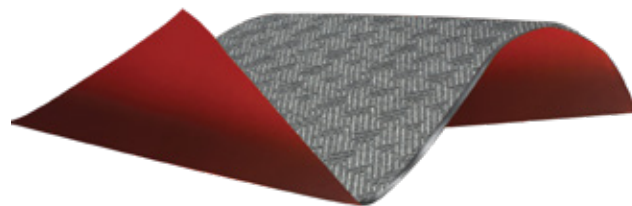
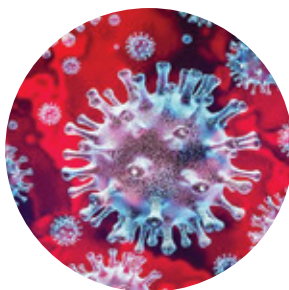
If you would like additional information or would like to speak with an Inside Sales Representative please contact us at 1-800-MAT-LINE or visit our website at [www.crownmats.com](http://www.crownmats.com).



## Control Your Environment

While taking proactive measures to clean school facilities, it is essential to replace all mats to complete the task. Renting entrance matting may also pose additional risks as the mats are used in multiple locations and are handled frequently between cleaning and transport. Why not take the steps to **protect your facility** with the right product? **Crown Matting Technologies** offers the only entrance matting in the market with **ANTI-MICROBIAL** backing in a variety of attractive and efficient surfaces to meet your needs.

Crown's top 5 Premium entrance mats now include **ThermoGrip™ RED** backing. Made with BactiStop, an antimicrobial agent that prevents the development of germs and mold underneath your entrance mat.



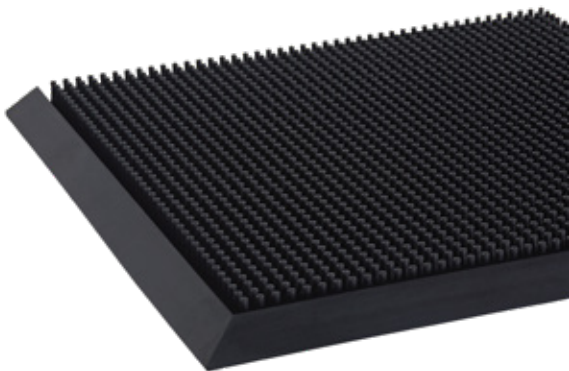
If you would like additional information or would like to speak with an Inside Sales Representative please contact us at 1-800-MAT-LINE or visit our website at [www.crownmats.com](http://www.crownmats.com).





## Open Your Facility With "**Double-Door**" Disinfectant Solutions

Are you worried about providing a ***clean and safe environment*** for employees, visitors, and customers as foot traffic increases in your facility?



### **Crown's 3' x 6' Mat-A-Dor™**

- Safely houses up to 2 gallons of disinfectant solution
- Designed to mechanically scrub the bottom of shoes
- Provides full double-door coverage

*Pairing the Mat-A-Dor with a 6'x8' or 6'x10' **Dust-Star™ with Anti-Microbial ThermoGrip™** backing will complete your first line of defense in keeping your facility safe and clean.*



If you would like additional information or would like to speak with an Inside Sales Representative please contact us at 1-800-MAT-LINE or visit our website at [www.crownmats.com](http://www.crownmats.com).



## Fun with Social Distancing

Faculty and Staff can have a difficult time in keeping law and order in a standard school environment. The burden of COVID-19 Social Distancing requirements can make that task next to impossible. Crown Matting Technologies is here to help with our fun **Emoji Social Distancing Matting** designed to entice students to participate in keeping the required spacing while waiting in line.



## Emoji Social-Distancing Matting

Available in 3' x 8' lengths



If you would like additional information or would like to speak with an Inside Sales Representative please contact us at 1-800-MAT-LINE or visit our website at [www.crownmats.com](http://www.crownmats.com).





## How Can You Manage This?

As the world begins to re-open, patrons are longing to indulge in activities they have been missing for several months. It may be your Street Tacos, Gyros, or Philly-steak sandwich that they have a craving for. Allow us to help you in providing an environment in which they feel safe and meets Social Distancing recommendations.

Crown Matting Technologies is here to help with our fun **Emoji Social Distancing Matting** designed to entice customers to participate in keeping the required spacing while waiting in line. Our durable outdoor mat will withstand heavy traffic and is designed to accept a light power-washing to remove dirt and debris.



## Emoji Social-Distancing Matting

Available in 3' x 8' lengths

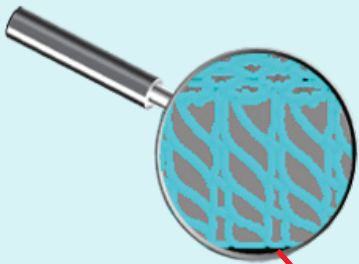


If you would like additional information or would like to speak with an Inside Sales Representative please contact us at 1-800-MAT-LINE or visit our website at [www.crownmats.com](http://www.crownmats.com).



# SANI - WALK

## DUAL ANTIMICROBIAL TECHNOLOGY



EXTRUDED  
ANTIMICROBIAL  
FIBERS



ANTIMICROBIAL  
ANTI-SLIP VINYL  
BACKING



Crown's innovative new **Sani-Walk** entrance matting utilizes a very unique **dual antimicrobial technology** in both the extruded carpet fiber and our durable vinyl backing to assist you in controlling the environment where employees, patrons, and guests visit.....*the entrance.*

While everyone continues to focus on the cleanliness related to the hands and mouth, Crown provides an entrance matting solution to address an area that is often overlooked.

**Color Available:** Charcoal

**Mat Sizes Available:** 2' x 3' 3' x 5' 3' x 10'  
4' x 6' 4' x 10' 6' x 10'

**Roll Sizes Available:** 3' x 60' 4' x 60'  
6' x 60'

*Customization Available*



**For more information, please reach out to us at 1-800-MAT-LINE to speak with one of our inside sales representatives today.**



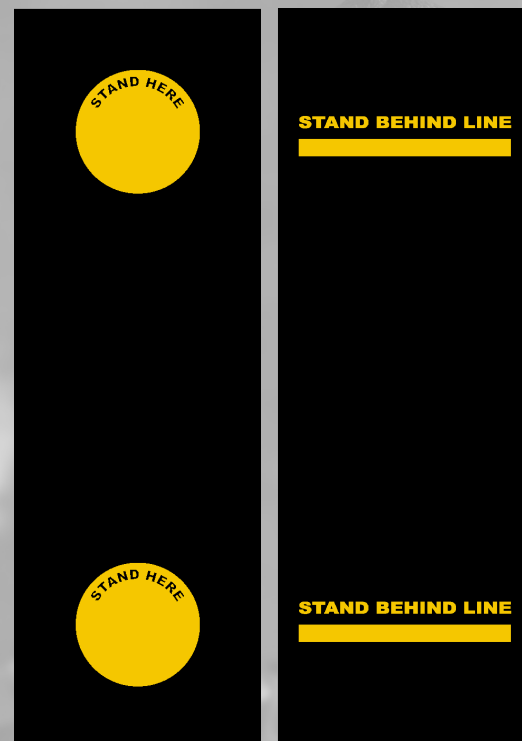
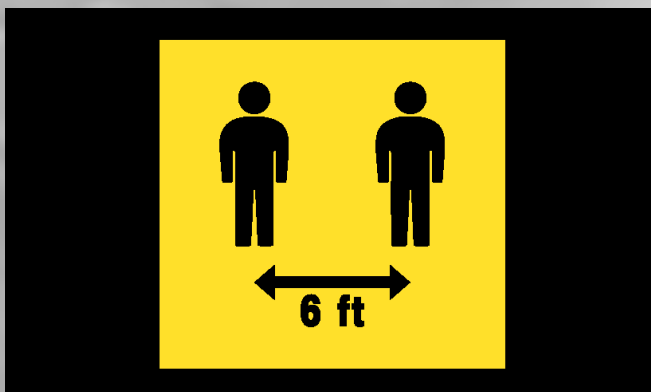
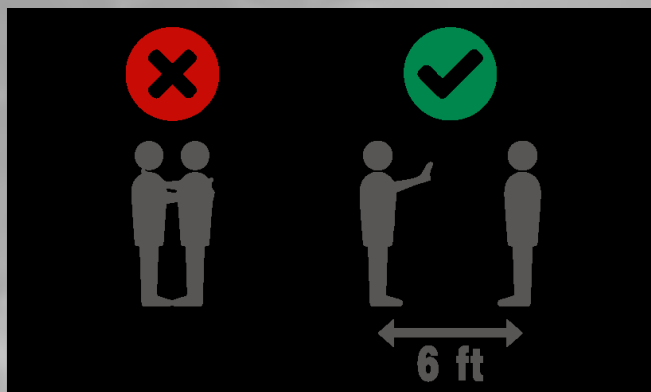


# Do Your Part – Stay 6 feet Apart!

***Win the battle of Covid-19!***

***Allow a Safe Distance and Keep Wet Floors Safe!***

*Flocked Mats  
3'x5' & 4'x6'*



*Flocked Mat  
3'x10'*

Call Crown Customer Service at (800)-628-5463  
or email [sales@crownmats.com](mailto:sales@crownmats.com)  
**[www.crownmats.com](http://www.crownmats.com)**