

PROMOTIONAL PRODUCTS IMAGE MATTING

Greet your audience, inspire confidence, stand out with a custom image mat.



IMAGE MATTING

Greet your audience at the door with a Crown entrance mat.

Greet your audience, inspire confidence, stand out with custom image matting.

Personalize your entrance with a promotional logo image mat, that not only welcomes your audience but enhances brand recognition over time. Since 1943, we take pride in manufacturing quality commercial floor mats in Fremont, Ohio. Crown Matting Technologies formally known as Image Products delivers the widest selection of Promotional Image Mats in the matting industry.

We believe in the value of personal branding and offer you many options to enhance your logo or share your message on high performance entrance matting.

Many businesses today share office buildings and a promotional image mat can help direct new patients, customers, or students to your door.

Image matting allows you to personalize your space and help lower floor maintenance costs. Self-promotional logo mats or image mats are best placed indoors to help keep floors safe and clean while directing traffic to your door. With that in mind we developed custom image matting solutions unique to fit your environment.

Please browse our catalog to locate the best options for your environment. If you need any help selecting the right mat to fit your environment please contact our Customer Service Representatives and we will be happy to help.

If you are undecided on which mat is best for you please request a no charge 5" x 7" swatch sample and we will do our best to meet or exceed your matting expectations. Please contact Customer Service by email at sales@crownmats.com or call (800) 628-5463.



#010 WIPER
Light / Medium Traffic



Flocked Mat

ITEM DESCRIPTION

Flocked Imprints will be slightly raised due to the electrostatically charged nylon fiber that bonds to the mat carpet surface top adhesive. Great indoor mat for moderate to low traffic areas. Suggested applications to be placed in Small Retail Stores, Insurance Offices, Medical Office or lobby area as a Promotional Mat.

FEATURES

- Choose up to 4 imprint colors – Set-up fee required
- 20 PMS imprint colors available – special colors upon request. Additional surcharge may apply, contact Customer Service.
- Choose your Mat Surface:

Rely-On™ – 100% Olefin mat - Preferred for light traffic areas

Eco-Step™ – 100% recycled surface - Popular for medium traffic areas

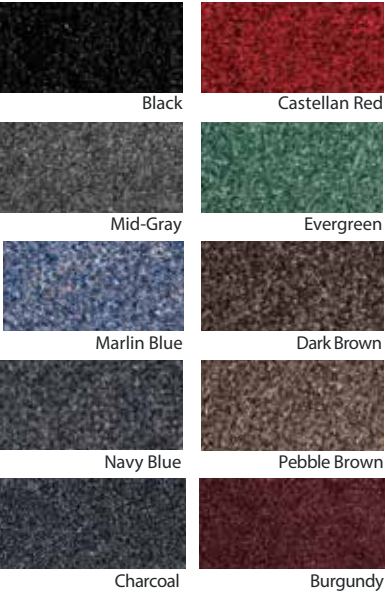
Lead Time: 2 - 3 weeks

IMPRINT | PMS COLORS

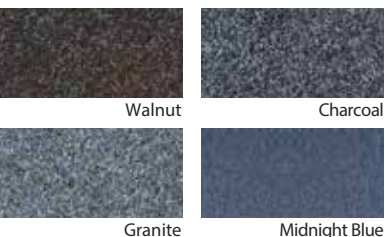


MAT SURFACE Options:	MAT SIZE:	THICKNESS:
Rely-On™ - 100% Olefin mat with vinyl backing absorbs moisture, traps fine dust and protects floors	2' x 3'	7/16"
	3' x 4'	7/16"
	3' x 5'	7/16"
Eco-Step™ - 100% recycled surface with vinyl backing absorbs moisture, traps fine dust and protects floors	3' x 6'	7/16"
	4' x 6'	7/16"
Minimum order: 1 Mat		Warranty: 1 year

MAT Surface | Rely-On Colors



MAT Surface | Eco-Step Colors



#040 WIPER Light - Heavy Traffic



IMPRINT | PMS COLORS



Extended colors available

Crown-Tred™ Printed

ITEM DESCRIPTION

Crown-Tred™ Printed mats are great for heavy traffic areas for outdoor or indoor entrances. Imprint image is digitally printed on a thermoplastic material and molded to a nitrile rubber mat which allows excellent color tones and color variations. The permanent digital bond process allows for a longer lasting impression.

FEATURES

- No set up charge
- Digital thermoplastic imprint is UV resistant
- Tolerance up to 3% on mat size, not trade sizes
- Choose up to 150 AVAILABLE colors – *PMS color match available (surcharge)
- Durable 1/4" thick nitrile rubber mat is oil, grease and chemical resistant
- Best for Small Retail Stores, Independent Insurance Offices
- Made in the USA

Lead Time: 3 - 5 Days

TRADE SIZES:		THICKNESS:
2' 6" x 3'	4' x 8'	1/4"
3' x 5'	6' x 6'	1/4"
3' x 10'	6' x 8'	1/4"
4' x 6'		1/4"
Minimum order: 1 Mat		Warranty: 1 year

MAT Surface | Base Colors



Black



#025 SCRAPER/ WIPER Moderate - Heavy Traffic



Smooth Rubber borders

Super-Soaker™ Inlay

ITEM DESCRIPTION

Premium quality Super-Soaker™ Inlay entrance mat can be used indoors and outdoors if under an overhang cover, making it well-suited for medium traffic entrance ways. Recommended mat for office buildings, schools, restaurants, and malls.

FEATURES

- No setup fee for camera ready art
- Fabric borders or smooth rubber borders
- Tolerance up to 3% on mat size, not trade sizes
- 100% solution dyed polypropylene surface that will not fade or rot
- Nitrile rubber cleated backing allows safe mat placement on carpet or on non-carpeted floors
- Manufactured in the USA

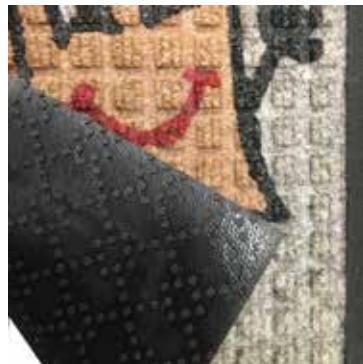
Lead Time: 3 - 5 Days

TRADE SIZES:					THICKNESS:
2' x 3'	3' x 12'	4' x 10'	6' x 5'	6' x 20'	3/8"
3' x 4'	3' x 15'	4' x 12'	6' x 6'		3/8"
3' x 5'	3' x 20'	4' x 14'	6' x 8'		3/8"
3' x 6'	4' x 6'	4' x 16'	6' x 10'		3/8"
3' x 10'	4' x 8'	4' x 20'	6' x 12'		3/8"
Minimum order: 1 Mat					Warranty: TOTAL CONFIDENCE

MAT Surface | BASE COLORS



IMPRINT | PMS COLORS



Nitrile rubber cleated backing

#035 INDOOR MAT
WIPER | High Traffic



HD Jet Print™

ITEM DESCRIPTION

Enhanced color definition up to 10x's more compared to a standard jet printed mat. Perfect image mat solutions for extremely fine detailed logos or images with gradient color transitions.

FEATURES

- Choose up to 150 printed colors
- Solid vinyl backing and vinyl borders traps in liquids and fine dirt
- PMS Color Match available for additional fee, only 2 PMS colors per image design and must not be the mat background color
- Complimentary proof sketch
- No setup charge. Camera ready art required.
- Made in the USA

Lead Time: 10 Days

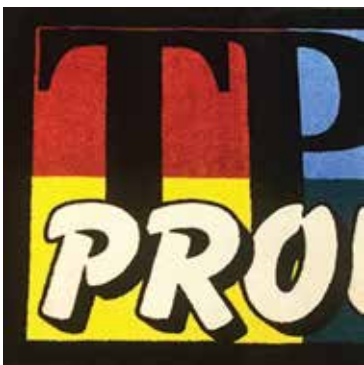
MAT SURFACE:	MAT SIZE:		THICKNESS:
• 100% printed cut-pile nylon top surface, total weight 0.45lbs per square foot	2' x 3'	4' x 8'	5/16"
	3' x 4'	5' x 8'	5/16"
	3' x 5'	5' x 10'	5/16"
	3' x 10'	6' x 12'	5/16"
	4' x 6'	6' x 10'	5/16"
Minimum order: 1 Mat			Warranty: 1 year

MAT | Base/ Imprint Colors



Extended colors available

#030 INDOOR MAT
WIPER | High Traffic



MAT | Base/ Imprint Colors



Extended colors available

Jet Print™

ITEM DESCRIPTION

Great indoor nylon printed mat for moderate traffic areas best for schools, restaurants, retail stores, and office buildings. Best for simple contrasting color logos or images without gradient colors.

FEATURES

- 26 mat base color options
- Standard Colors - up to 300 color options for logo or image printing
- PMS Color Match available for additional fee, only 2 PMS colors per design and must not be the mat background color
- Standard 52 mil rubber cleated backing with rubber borders traps in liquids and fine dirt
- 1 Complimentary sketch proof
- No setup fee for camera ready art
- Made in the USA

Lead Time: 3 - 5 Days

MAT SURFACE:	TRADE SIZES:		THICKNESS:
100% printed cut-pile nylon top surface, total weight 0.45 lbs. per square foot	2' x 3'	4' x 8'	5/16"
	3' x 4'	5' x 8'	5/16"
	3' x 5'	5' x 10'	5/16"
	3' x 10'	6' x 10'	5/16"
	4' x 6'	6' x 12'	5/16"
Minimum order: 1 Mat			Warranty: 1 year

MAT Surface | BASE COLORS



#065 SCRAPER/ WIPER INDOOR | Heavy Traffic



Super-Berber Inlay

ITEM DESCRIPTION

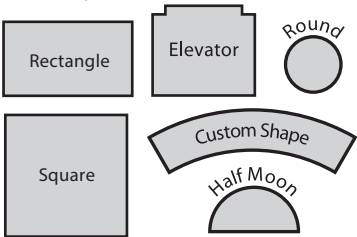
Distinguish yourself with the largest custom logo mat available! Super-Berber Inlay needle punch quality mats are designed to promote your logo and protects all floor surfaces from wetness, dirt, and debris. Known for delivering ultimate scraper and wiper performance in one mat. Super-Berber Inlay mats are a perfect solution to “Welcome” a customer at all entrance ways, office building lobbies, schools, airports, and sport concourses; all while keeping dirt at bay and decreasing your maintenance costs. Camera ready artwork is required for before a quote can be issued.

FEATURES

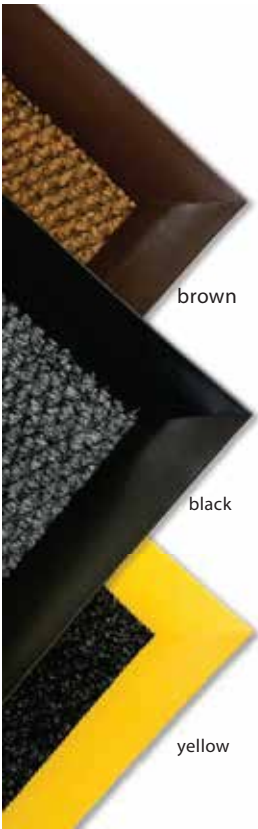
- 100% Solution Dyed Polypropylene Berber, UV, and abrasion resistant
- Mat custom width size: minimum 2'; maximum 13'-2"
- Inlay custom length size: minimum 1'; maximum 100'
- Maximum Durability All weather rubber backing
- Standard borders are Black. Brown & Yellow are available upon request.
- Manufactured in the USA

MAT SURFACE:	STANDARD SIZES:				THICKNESS:
•100% Solution Dyed Polypropylene Berber, UV, and abrasion resistant • Fiber Weight: 52 oz. yd ² 1,474 g/m ² • Total Weight: 93 oz. yd ² 2,637 g/m ² Edging options: • Choose between Heat sealed, Square cut, or Beveled cut	2' x 3'	3' x 12'	6' x 6'	8' x 12'	1/2"
	3' x 4'	4' x 6'	6' x 8'	12' x 12'	1/2"
	3' x 5'	4' x 8'	6' x 10'		1/2"
	3' x 6'	4' x 10'	6' x 12'		1/2"
	3' x 10'	4' x 12'	6' x 20'		1/2"
Minimum order: 1 Mat Warranty: 3 year *All sizes are +/- 0.5". Please specify if size needs to be exact					

Custom Shapes:



Edging options



MAT Surface | Base Colors and Imprint Colors

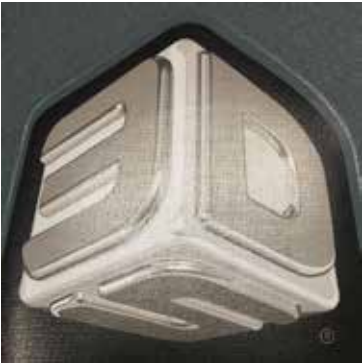




Style 1: Embossed – monotone base color



Style 2: Embossed – vinyl imprint color



Style 4: Embossed – digital film imprint image

Embossed Anti-Fatigue Mat

ITEM DESCRIPTION

Crown’s embossed anti-fatigue indoor mats offer you style and comfort for tired feet and legs. Select between three finish styles to apply your logo to our exclusive anti-fatigue foam mats. An ideal promotional mat solution for large corporations, franchises, or to simply give to your customers. Embossed mats are a great choice for veterinary clinics, indoor playgrounds, automotive showrooms, kiosks, or workstations.

FEATURES

- Comfort-King™ w/ Zedlan™ - preferred anti-fatigue foam or TUFF-SPUN - popular anti-fatigue foam
- Mat tolerance up to 5%
- Choose between **Style 1, Style 2, Style 4**
- Anti-Microbial mats available ask Customer Service for details
- Tooling charge
- 50 mats/ flat packed minimum order. Boxes upon request.
- Made in the USA.

IMAGE FINISH:

- Style 1:** Embossed – monotone; base color
- Style 2:** Embossed – vinyl; imprint color
- Style 4:** Embossed – digital film imprint image

Lead Time: 4-5 weeks upon artwork approval

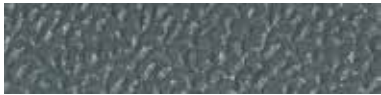
Additional info: Camera ready artwork is required before pricing can be calculated. Custom sizes may be available, ask Customer Service for more details.

MAT SURFACE:	MAT SIZES:
• Comfort-King™ - made with preferred Zedlan™ anti-fatigue foam. Thickness: 3/8" or 1/2"	2' x 3'
• Tuff-Spun- Standard Industrial grade anti-fatigue foam. Thickness: 3/8"	3' x 4'
	3' x 5'
	3' x 10'
Minimum order: 50 Mats	
Warranty: 1 year	

Comfort-King | Base Option Zedlan™ Anti-fatigue foam



Black



Steel Gray



Royal Blue

Tuff-Spun | Base Option Industrial Anti-fatigue foam

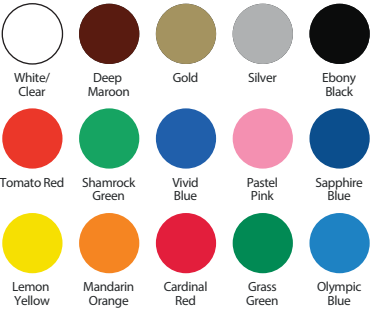


Black



Gray

IMPRINT | PMS COLORS



WHY BUY CROWN MATS

Crown Image Matting offers a full menu of floor matting solutions to create an inviting atmosphere. We are in business to serve you. We hold honor in our service and production process to produce durable matting solutions in Fremont, Ohio. If you're not satisfied with your mats please call (800)-MAT-LINE.

HOW TO BUY

We proudly serve a global distribution network, it's easy to put the strength of our matting solutions to work for you. Simply call our customer service team at (800)-MAT-LINE (628-5463) or visit our website at www.CrownMats.com to locate a matting specialist near you.

WARRANTY POLICIES

Crown Matting Technologies minimum warranty is a one-year limited warranty based on product type. Please refer to www.CrownMats.com for Image Matting warranty information.

PATENTS, COPYRIGHTS, TRADEMARKS

Upon signing the final proof, the purchaser assumes all liability that may result from action taken against Crown Matting Technologies for patent, copyright, or trademark infringement.

SHIPPING

FOB Factory. We reserve the right to ship by the most beneficial means of transportation. Smaller orders will be shipped via truck line carrier.

TERMS & CONDITIONS

Refer to the Crown Promotional Image Matting Price List.

VARIANCES

Mat sizes are not always an exact measurement and typically have a 3-5% variance due to the materials and manufacturing processes. Colors may not be exact match of previous order. We recommend purchasing 2 mats per order.

Actual colors in the catalog or online may vary slightly from product. Please request a base color swatch sample for your final color selection.

NOTIFICATIONS

Upon final approval, the purchaser authorizes Crown Matting Technologies to use a sample of the product for publication and publicity concerning Crown's Image Matting program. Logos shown in this catalog are for display only. Display logos may only be purchased through the company or representative of that company owning the rights to the logo or promotional messages.

Additional matting processes may become available including the option to order Vinyl Link mats. Please contact customer service for details.

© Crown Matting Technologies
Printed in the USA (012018)



Improving Our Customers Standing.
2100 Commerce Drive
Fremont, Ohio 43420
(800) MAT-LINE (628-5463)
www.CrownMats.com



PRODUCTS AND THEIR RELATED DETAILS ARE SUBJECT TO CHANGE. PLEASE CONTACT OUR CUSTOMER SERVICE DEPARTMENT TO OBTAIN CURRENT INFORMATION.

INSERT DISTRIBUTOR INFO