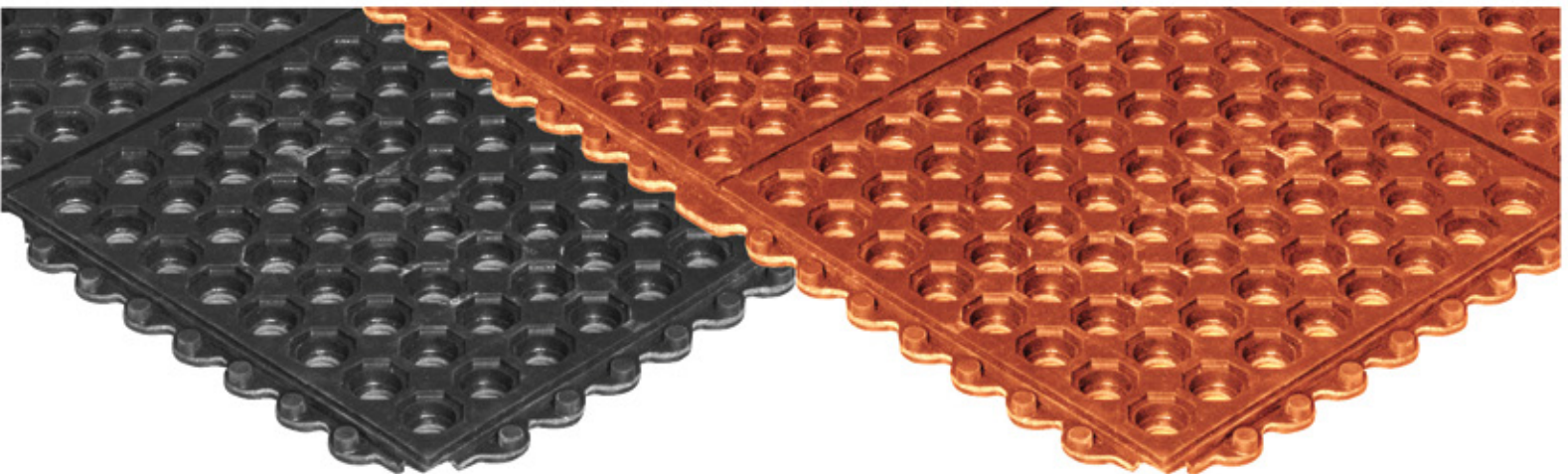
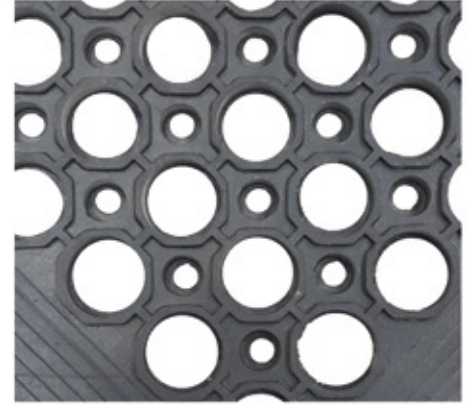


Improving our customer standing since 1943.



# We Cater to You!

Delivering floor matting solutions you need to create safer work environments.





# KITCHEN MATTING

Treat your employees like royalty with Crown Food Service mats.

Every step you take, to every dish you make, the foundation to your success begins with proper food service matting.

We understand the health conditions and the pains that you can develop over time due to standing long hours. With that in mind, we developed food service matting solutions catered to fit your unique environments.

Crown Kitchen Matting offers a full menu of floor matting solutions to assist you with supporting your culinary and service crews.



MATTING PRODUCT NAME:	PROFILE THICKNESS SIZE:	SMALLEST STANDARD SIZE:	MATTING LOCATION AREAS:	FIND PAGE LOCATION:
Safewalk™	7/8"	3' x 5'	KITCHEN, BAR	3
Safewalk-Light™	1/2"	3' x 5'	KITCHEN, BAR	3
Safe-Flow Plus™	3/8"	3' x 5'	DISHWASHER, DRINK STATION, FRYER	3
<b>NEW!</b> Safe-Flow Plus™ w/Grit	3/8"	3' x 5'	DISHWASHER, DRINK STATION, FRYER	3
Safety-Step Perforated™	5/8"	3' x 3'	KITCHEN, DISHWASHER	4
Comfort-King™	3/8"	2' x 3'	HOSTESS STATION, CASHIER	4
<b>NEW!</b> WD Foodmaster	9/16"	2' x 3'	KITCHEN, BAR	4
Crown-Tred™	1/4"	3' x 5'	KITCHEN, BAR, FRONT ENTRY	5
Spaghetti Mat™	3/8"	3' x 5'	FRONT ENTRY, DISHWASHER	5
Super-Berber Inlay	1/2"	2' x 3'	FRONT ENTRY, DINING ROOM	5
HD Jet Print™	5/16"	2' x 3'	FRONT ENTRY, DINING ROOM	5
Marathon™	1/2"	2' x 3'	FRONT ENTRY, DINING ROOM	6
Super-Soaker™	3/8"	2' x 3'	FRONT ENTRY, DINING ROOM	6
Dust-Star™	1/2"	2' x 3'	FRONT ENTRY, DINING ROOM	6



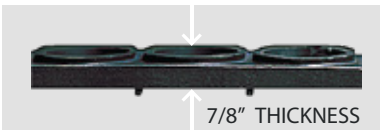
## #635/#636 WET / OILY AREA | Premium



#636 Nitrile Rubber Blend Terra Cotta



#635 General Purpose Rubber Black



7/8" THICKNESS

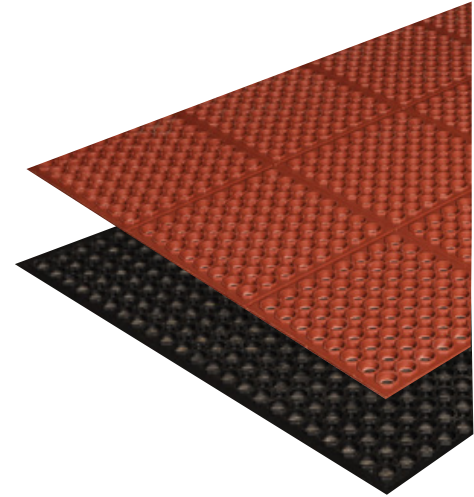
## Safewalk™

### FEATURES

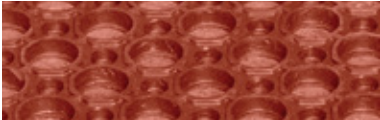
- Terra Cotta nitrile rubber blend offers resistance to grease and allows easy drainage capabilities of liquid and debris.
- Black and Terra Cotta are best for kitchen work stations, food processing, bars or cafeterias.

**Warranty: Total Confidence**

ITEM COLORS:	MAT SIZES:	THICKNESS:
#635 Black	3' x 5'	7/8"
#636 Terra Cotta	3' x 5'	



## #645/#646 WET / OILY AREA | Preferred



#646 Nitrile Rubber Blend Terra Cotta  
(grease resistant)



#645 General Purpose Rubber Black



1/2" THICKNESS

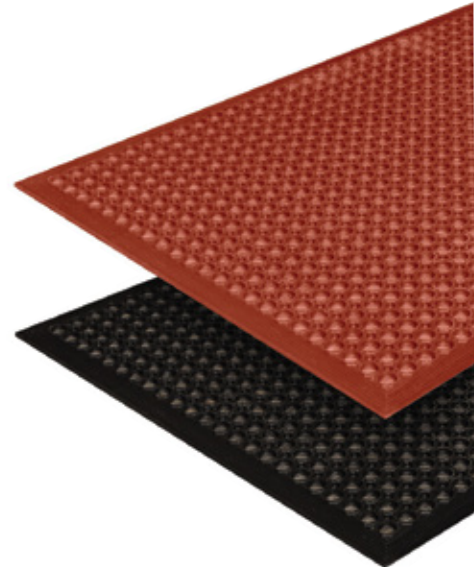
## Safewalk-Light™

### FEATURES

- Raised surface rings provide excellent traction.
- Low profile mat with molded beveled borders for increased safety.
- Best for behind bars, dish washing, food processing, or packaging areas.

**Warranty: Total Confidence**

ITEM COLORS:	MAT SIZES:	THICKNESS:
#645 Black	3' x 5'	1/2"
#646 Terra Cotta	3' x 10'	
	3' x 15'	
	3' x 20'	
Mat lengths that reach 10' or longer will have a seam every 5' feet.		



## #648/ #658 WET / OILY AREA | Preferred



#648 Black



**NEW!**  
#658 with Grit

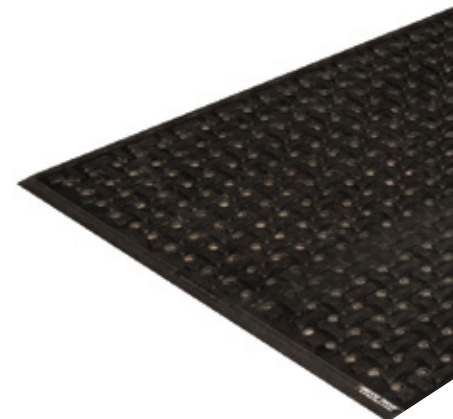
## Safe-Flow Plus™

### FEATURES

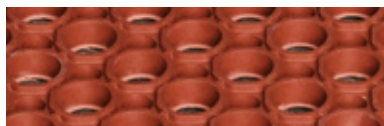
- 100% nitrile rubber offers maximum resistance to water, oil, grease, chemicals and animal fats.
- Use for food processing and packaging, kitchens, industrial work stations, freezers/cold storage or fryers.

**Warranty: Total Confidence**

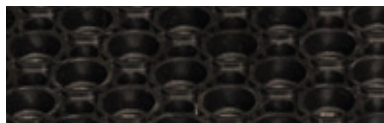
ITEM COLOR:	MAT SIZE:	THICKNESS:
#648 Black	3' x 5'	3/8"
#658 with Grit		



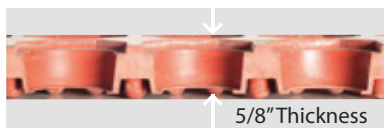
## #680/#681 WET / OILY AREA | Premium



#681 Nitrile Rubber Blend Terra Cotta  
(grease resistant 15% Recycled)



#680 General Purpose Rubber Black  
(general purpose, 47% Recycled)



5/8" Thickness

## Safety-Step™ Perforated

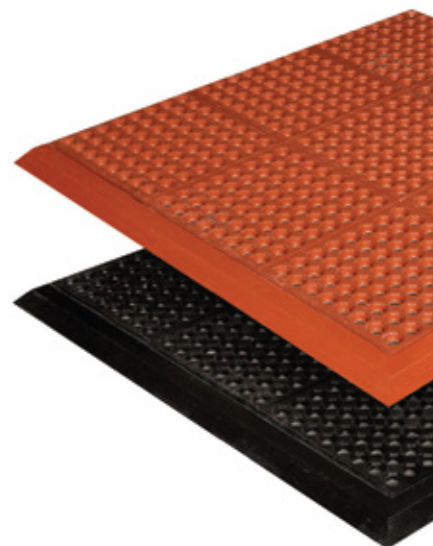
### FEATURES

- Terra Cotta nitrile rubber blend is resistant to grease and allows easy drainage capabilities to remove liquid and debris.
- Use for irregularly-sized kitchen work stations, food processing, bars or cafeterias.
- Custom sizes available up to 12' x 30'.

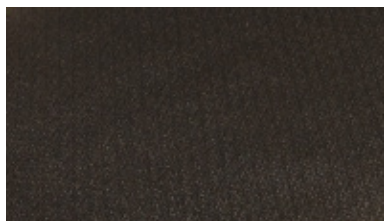
**Warranty: Total Confidence**

ITEM COLORS:	MODULAR TILE SIZE:	THICKNESS:
#680 Black	3' x 3'	5/8"
#681 Terra Cotta	3' x 3'	

**Finish:** Beveled male/female ramps available



## #440 DRY AREA | Premium



#440 Standard Pebbled Textured surface



3/8" THICKNESS

## Comfort-King™

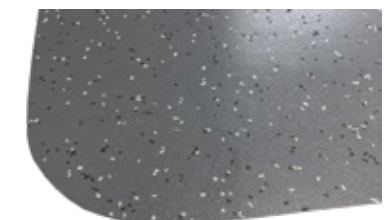
### FEATURES

- Patented Zedlan™ Foam outwears other foam products by nearly three to one.
- Use for cashier stations or hostess stations

**Warranty: Total Confidence**

ITEM COLORS:	MAT SIZES:	THICKNESS:
#440 Black, Royal Blue, Steel Gray, Black w/Yellow borders	2' x 3' 3' x 5' 3' x 12'	3/8"

## NEW! #547 DRY AREA | Premium



#547 beveled edges



9/16" THICKNESS

## WD Foodmaster™

### FEATURES

- For commercial applications in food preparation areas
- Patented Zedlan™ Foam outwears other foam products by nearly three to one.
- Specially formulated, durable surface resists occasional spills of food, sugar, fat, oil, and alcohol that is easy to clean.

**Warranty: Total Confidence**

ITEM COLOR:	MAT SIZES:	THICKNESS:
#547 Dark Gray	2' x 3' 3' x 4' 4' x 12'	9/16"





## #145 Crown-Tred™

SCRAPER | Light Traffic



#145 Standard Black Textured surface

### FEATURES

- Rubber made to withstand any outside weather usage.
- Affordable solution for small commercial location.
- Raised pattern scrapes debris off shoes.
- Beveled rubber borders.

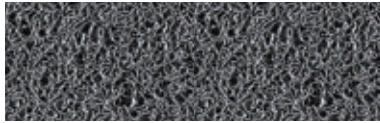
**Warranty: 1 year**

ITEM COLOR:	MAT SIZES:	THICKNESS:
#145 Black	3' x 5' 3' x 10' 4' x 6'	1/4"



## #130/#131

SCRAPER | Light Traffic



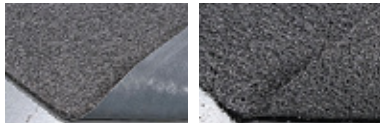
#130/#131 Gray

### FEATURES

- PVC loop structure with vinyl backing.
- Dries quickly, resists mildew and fading.
- #130: with backing
- #131: unbacked for drain-through
- Available with nosing on all four sides.

**Warranty: 1 year**

ITEM COLORS:	MAT SIZES:	THICKNESS:
#130 Gray #130 Brown	3' x 5' 4' x 6'	3/8"
#131 Gray #131 Brown	3' x 20' 4' x 20'	3/8"

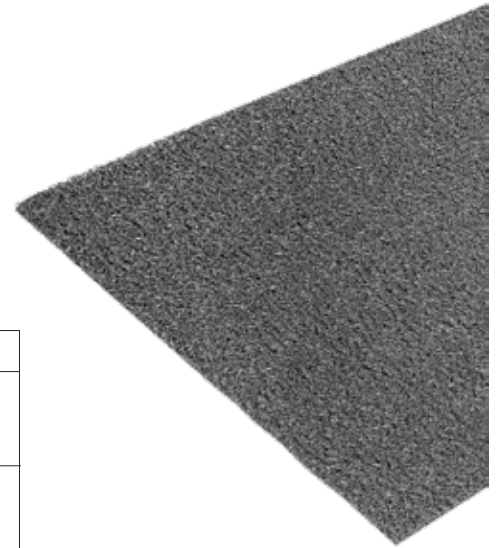


#130: with backing

#131: unbacked



3/8" THICKNESS



## #065 Super-Berber Inlay

SCRAPER/WIPER | Heavy Traffic



### FEATURES

- 100% Solution Dyed Polypropylene Berber, UV, and abrasion resistant.
- Maximum Durability All weather rubber backing.
- Standard borders are black.
- Custom shapes available.
- Made in the USA.

**Lead Time: 3-5 Weeks**

**Warranty: 3 year**



### ITEM DESCRIPTION

Choose between 40 different color options. Super-Berber Inlay mats are a perfect solution to "Welcome" a customer at all entrance ways with your logo all while keeping dirt at bay and decreasing your maintenance costs.

<https://www.crownmats.com/products/super-berber-inlay>

## #035 HD Jet Print™

WIPER | Heavy Traffic



### FEATURES

- Choose up to 150 printed colors.
- Solid vinyl backing and borders traps in liquids and dirt.
- Complimentary proof sketch.
- No setup charge. Camera ready art required.
- Made in the USA.

**Lead Time: 10 Days**

**Warranty: 1 year**



### ITEM DESCRIPTION

Enhanced color definition up to 10x's more compared to a standard jet printed mat. Perfect image mat solutions for extremely fine detailed logos or images with gradient color transitions.

<https://www.crownmats.com/products/hd-jet-print>

## #228 Marathon™

SCRAPER/WIPER | Heavy Traffic



Anthracite



Beige



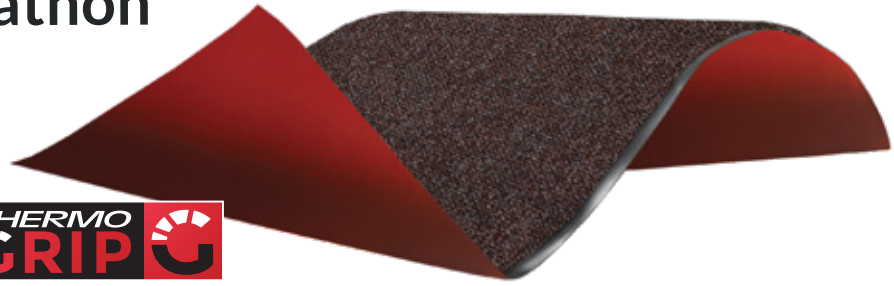
Blue/Gray



Dark Brown



ANTIMICROBIAL FLOOR MATS



### FEATURES

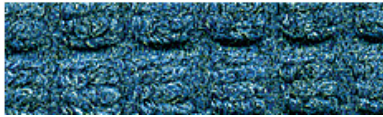
- Durable wiper/scrapper mat traps dirt and retains moisture to keep floors cleaner.
- Heavy-duty needlepunch top surface for outstanding scraping ability.
- Made with ThermoGrip™ Technology - *NFSI certified*.
- 60% tear resistant strength over standard mats.
- Made with BactiStop - prevents the development of mold & germs underneath the entrance mat.

**Warranty: Total Confidence**

ITEM COLORS:	MAT SIZES:	THICKNESS:
Anthracite	3' x 5'	1/2"
Beige	4' x 6'	
Blue/Gray	3' x 10'	
Dark Brown	4' x 10'	

## #250 Super-Soaker™

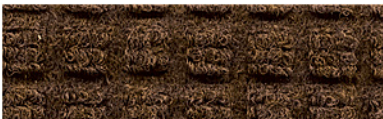
SCRAPER/WIPER | Medium Traffic



Blue



Charcoal



Dark Brown

### FEATURES

- Protective non-skid nib backing will effectively grip mat to the floor.
- Crush-proof waffle pattern scrapes shoes clean and holds dirt beneath shoe level and wipes shoe soles dry.
- 100% solution-dyed polypropylene surface will not fade or rot.

**Warranty: Total Confidence**

ITEM COLORS:	MAT SIZES:	THICKNESS:
Blue	3' x 5'	3/8"
Charcoal	3' x 10'	
Dark Brown	4' x 6'	



## #350 Dust-Star™

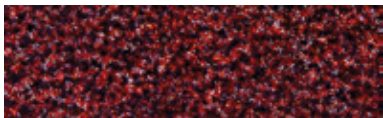
WIPER | Heavy Traffic



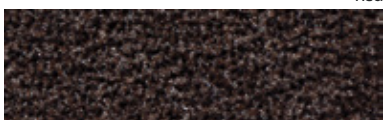
Charcoal



Marlin Blue



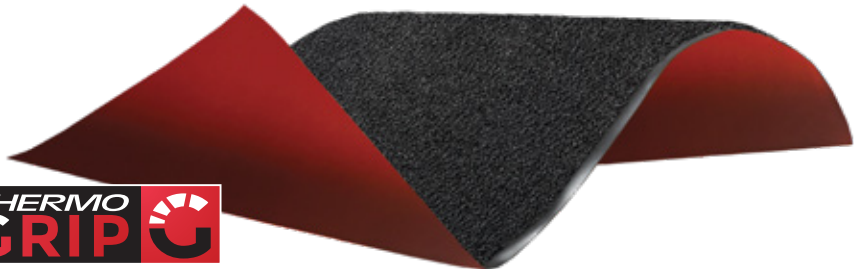
Red



Walnut



ANTIMICROBIAL FLOOR MATS



### FEATURES

- Unique microfiber/olefin blend with incredible dust retention properties that attracts hair, lint, dust and keeps them from polluting the air.
- Made with ThermoGrip™ Technology - *NFSI certified*.
- 60% tear resistant strength over standard mats.
- Made with BactiStop - prevents the development of mold & germs underneath the entrance mat.

**Warranty: Total Confidence**

ITEM COLORS:	MAT SIZES:	THICKNESS:
Charcoal	3' x 4'	1/2"
Marlin Blue	3' x 5'	
Red	4' x 6'	
Walnut	3' x 10'	

## WE CATER TO YOU

Treat your feet and body like royalty. Trust Crown Food Service Matting to support your legs and feet all day long.

## WHY BUY CROWN MATS

Crown Food Service Matting offers a full menu of floor matting solutions to create safer work environments.

We are in business to serve you. We hold honors in our service and production processes to produce durable matting solutions in Fremont, Ohio. If you're not satisfied with your mats, please call (800)-MAT-LINE (628-5463) or visit [www.CrownMats.com](http://www.CrownMats.com)

## HOW TO BUY

We proudly serve a global distribution network. It's easy to put the strength of our matting solutions to work for you. Simply call our customer service team at (800)-MAT-LINE (628-5463) or visit our website at [www.CrownMats.com](http://www.CrownMats.com) to locate a matting specialist near you.

## CARE AND MAINTENANCE

### USE & CARE INSTRUCTIONS – ENTRANCE MATTING

Regular maintenance of your mats is critical to extend mat life and appearance. It is recommended to develop a regular maintenance schedule. Frequency will depend on traffic and soil conditions.

### INITIAL MAT USE

- 1| Within a few days of receipt, rolled mats should be unrolled and laid flat.
- 2| Normal shedding or “fuzzing” may occur with new carpet top mats. This will disappear after a few vacuumings.
- 3| Some rubber mats may have an oily or sticky film on them. This is a releasing agent that is inherent to molded mats, not a defect. Simply wash down with a mild detergent or degreaser to remove this film.
- 4| To store mats, roll them up and lay them in a dry area with moderate temperatures. Do not stand on end or crush.
- 5| Make sure all floor surfaces are 100% dry before putting mats down.

### PERIODIC INSPECTION

Periodic inspections are recommended on a regular basis to check for border tears. To repair a damaged border or area, glue the section together with cyanoacrylate ester type (super glue) adhesive.

### CARPET MATS AND HDNP PRODUCTS

Entrance mats are used to capture dirt and debris before it can be tracked into a facility. However, mats must be cleaned regularly to extend their usefulness and appearance.

- 1| Vacuum daily.
- 2| Hand wash or extract stains with a carpet spotter using a water-based carpet detergent or shampoo.
- 3| Periodically clean the mat with a carpet extractor.



Improving Our Customers Standing.  
2100 Commerce Drive  
Fremont, Ohio 43420  
(800) MAT-LINE (628-5463)  
[www.CrownMats.com](http://www.CrownMats.com)

INSERT DISTRIBUTOR INFO