



Metal Panel Overlay and Trim Design Guide

Electronic – Medical – Transportation – Industrial - Appliance



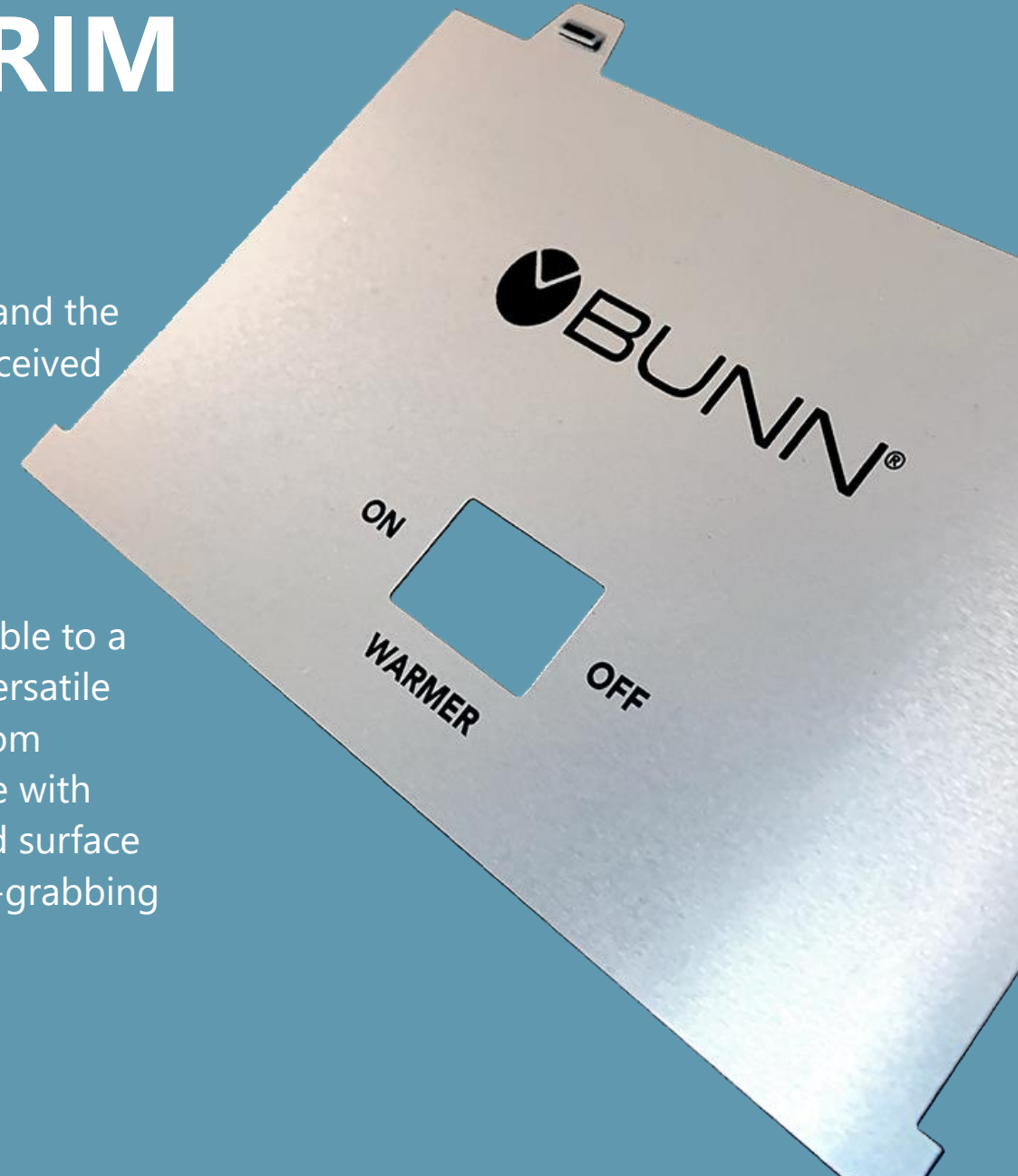
METAL PANELS AND TRIM

WHAT ARE METAL PANELS AND TRIM?

A metal panel is the surface between your product or equipment and the user. Trim can be functional or purely decorative to add to the perceived value of the product.

WHAT ARE THE BENEFITS OF METAL PANELS?

Metal panels, overlays, graphic fascias, trim, etc. are highly adaptable to a wide range of industries and applications. They are durable and versatile with the ability to withstand extreme conditions. Manufactured from aluminum or stainless steel, they provide exceptional performance with increased aesthetics. High quality branding, graphic elements, and surface finishes combine to give you the opportunity design an attention-grabbing panel for your product or equipment.



METAL PANEL AND TRIM CONSIDERATIONS

No matter if you are designing metal trim for functional purposes or to add perceived value with a decorative overlay, consider these elements.



Graphics

Easy to read layout with clear text and graphics



Fabrication

Embossing and custom cut-outs for functional elements

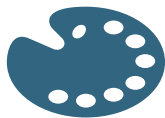


Finish

Select from a library of patterns or customize to suit your needs

Colors

Custom color matching to Pantone color palette



Adhesives

Secure bonding options for a variety of surfaces



Thickness and Placement

Variety of material thicknesses to allow placement on top of product housing or precise fit within recessed cavity



GRAPHICS

No matter what the purpose of your metal panel, a strong layout and design that is easy to read is the first step in delivering an exceptional final product. Take full advantage of the metal surface in your design.



METAL FABRICATION

Embossing can dramatically enhance the look of a panel whether drawing attention to your brand or adding detail to functional graphic. Precise cut-outs in any custom size or shape allow panels and trim to sit over control knobs, buttons, or around displays.

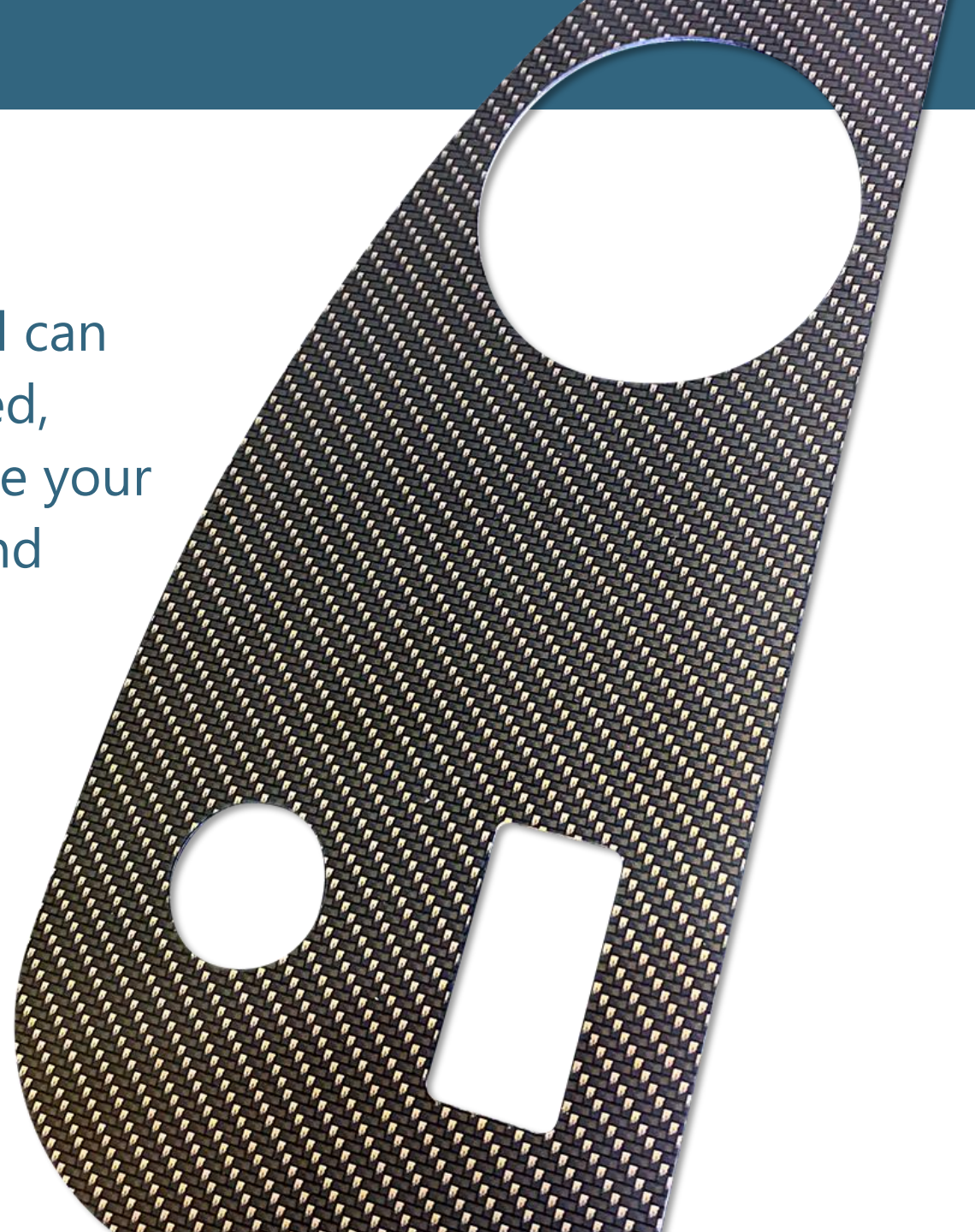


FINISH

A library of design patterns is available and can be customized. Whether smooth or textured, matte or glossy, all are adaptable to achieve your desired look, adding to the functionality and impact of the metal panel and trim.



Learn more about Finish Options for Metal Panels



COLORS

Expert color matching means there are no limits to options in branding that stands out. Opaque, transparent, and metallic effects coordinate with the reflective authentic metal surface for attention grabbing results. Custom colors can be used to match or complement mating components.



ADHESIVES

Adhesives are available to meet a variety of specifications depending on surface materials and environment. Items to consider for the mating surface include type of material, surface texture, surface energy, and whether a coating is on the mating surface.



THICKNESS AND PLACEMENT

Size and thickness of metal panels can be configured to meet requirements for placement on top of a product housing. Precise fit within a recessed cavity is also possible. Each project is custom-built to your unique specifications.



METAL OVERLAYS FOR ANY APPLICATION

Metal panels, overlays, and trim can be found on equipment and machines across all industries and products in both indoor and outdoor applications. They are the interface between operator and equipment, often showcasing product branding along with communicating critical information and safety instructions.

Commercial Food Service Equipment

Home Appliances

Medical Equipment

Electronic Equipment

Power Tools

Audio/Visual Devices

FREQUENTLY ASKED QUESTIONS

1

What material options are available for overlays, panels, and trim?

Aluminum and stainless steel are offered as strong and durable material for functional metal overlays or decorative trim. In addition to metal, a variety of plastic substrates including polycarbonate and polyester is offered.

2

Are there standard sizes for metal panels?

Each project is custom-built to meet the unique requirements in size, shape, and configured with appropriate cut-outs or embossed graphics. Therefore, there are no standard sizes for panels or trim.

3

What are the tooling and graphic tolerances?

Standard tolerances for printing nameplates and labels applies to overlays, panels, and trim. Graphics need to be a minimum of .007" stroke width. Tooling has tolerances ranging from $\pm .010$ -.015" on size. Each project is subject to review on a case by case basis. McLoone may need to modify artwork to meet manufacturing requirements including print line thickness or spacing of graphics.

4

Do you supply pre-production prototypes?

Yes! Production quality prototypes and samples allow you to fine tune designs and ensure the right look for your nameplate, label or overlay. First article pieces as well as corresponding quality certifications and reports are options that will be quoted upon your request.

5

What is the most common finish used for metal panels and trim?

Mill finish aluminum or brushed stainless steel are the most common background finishes seen on metal panels. Options with familiar geometric or carbon fiber finishes as well as high or low gloss coating are also available.

6

How much will my metal overlay cost?

Pricing is calculated based on the processing, material, and quantities needed for each project. Cost is unique and will vary. McLoone produces hard tooling as well as steel-rule and pierce dies in-house at less cost than is typically available in the market.

MORE THAN METAL

In addition to metal, rugged plastic overlays and trim are an attractive option, even in demanding environments. Plastic overlays are printed below the surface for durability and can be customized with embossing, finishes, and lighted graphics.



RELATED RESOURCES

Check out these articles and eBooks for even more helpful information about durable solutions for nameplates, overlays, and labels.

Articles

[Benefits of Customized Overlays](#)

[Customization Options for Labels and Overlays](#)

[Metal Options for Panels and Trim](#)

eBooks

[Nameplate Substrate Guide](#)

[Metal Nameplates That Stand Out – Embossing on Metal](#)

[5 Building Blocks for Metal Nameplate Design](#)



ABOUT MCLOONE

At McLoone, we combine creativity and expertise to custom manufacture graphic solutions that help you professionally brand your product. Whether building to print, creating rapid prototypes or collaborating on a custom solution, we're known for meeting deadlines and exceeding expectations.

Quality is integrated into every area at McLoone, from prototyping through delivery. We are ISO 9001:2015 registered and comply with RoHS3 and REACH requirements.

65 YEARS STRONG AND GROWING

Submit your requirements for pricing and see how McLoone can take your metal control panel vision from concept to reality.

GET A QUOTE

info@mcloone.com

