

Moving to Nagios XI has Never Been Easier

It's time to get more monitoring capabilities, a better UX, reporting, and insight.

Nagios XI 5.8 now migrates Core data in just a few clicks.

As IT monitoring becomes more complex and the stakes get higher, Nagios Core users are making the move to Nagios XI.

Whether you're making a complete switch to Nagios XI or you're folding Core instances into XI, we've made migration easier than ever. With just a few clicks, nearly all of your Core server data is automatically moved to Nagios XI!

The Nagios Support Team is on hand to help!

Get a [30-day trial of Nagios XI](#) with full support that includes priority phone consultations with a Nagios Technician, customer-only support forums and more!

We made Migration a Snap.

The new Nagios XI 5.8 utility makes it easy to migrate nearly all of your Core data to XI with just a few clicks!

- Import host and service configuration files
- Import notification preferences and settings
- Import host and service groups

Migrate your data in a fraction of the time and get your Nagios instances streamlined and consolidated!

The screenshot shows the Nagios XI web interface. The top navigation bar includes Home, Views, Dashboards, Reports, Configure, Tools, Help, and Admin. A left sidebar contains a 'Favorites' section and several expandable menus: System Information (System Status, Monitoring Engine Status, Audit Log, Check For Updates), Users (Manage Users, LDAP/AD Integration, Notification Management, User Sessions), System Config (System Settings, License Information, Proxy Configuration, System Profile, Email Settings, Mobile Carriers, Performance Settings, Automatic Login, SSH Terminal), and Monitoring Config (Config Snapshots, Migrate Server). The main content area is titled 'Migrate Server' and contains the following fields and options:

- Server Address:** A text input field with a placeholder 'IP Address or Hostname of the Nagios Core server to migrate to this system.'
- Credentials:**
 - Username:** A text input field with the value 'root' and a note: 'If not using root user, the user should have access to become root using sudo.'
 - Password:** A text input field with a toggle icon to show/hide the password.
- Migration Settings:**
 - Configuration Options:** Two checkboxes: 'Overwrite duplicate objects with migrated objects' and 'Clear current configuration on this system'.

A blue 'Migrate >' button is located at the bottom of the form.

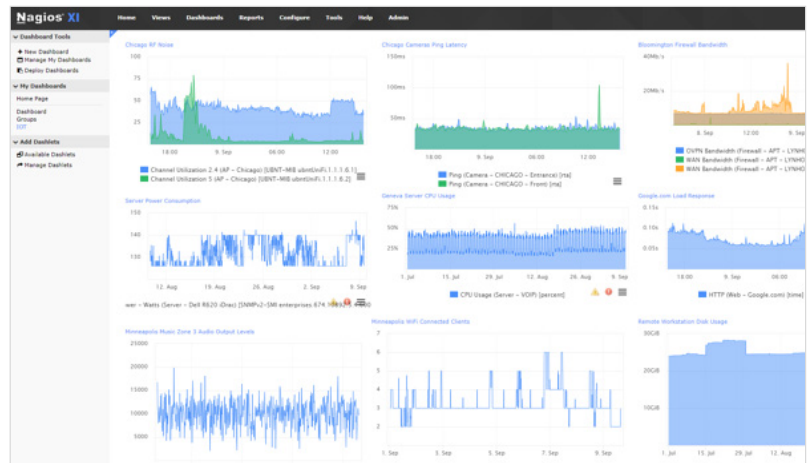
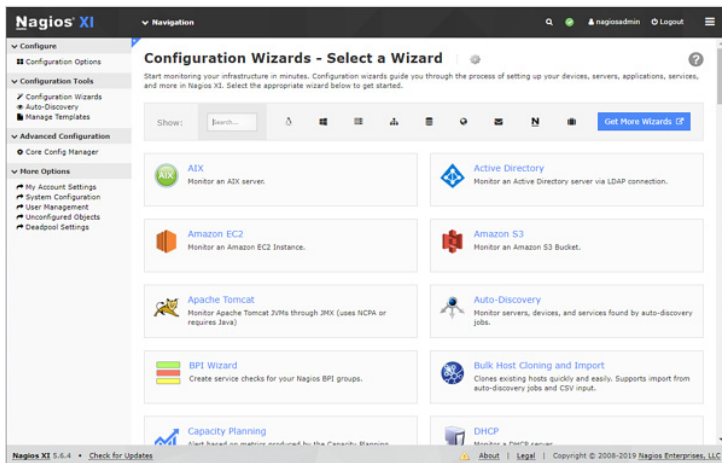
Why Make the Move to Nagios XI?

With wizards, graphs and reports, plus customizable dashboards, an integrated database, backend API, multi-tenancy and more, Nagios XI empowers you to work faster and smarter. It's a fully-supported and comprehensive solution for monitoring, alerting, graphing and reporting!

We take cybersecurity extremely seriously. Nagios XI's engrained cybersecurity protection allows for true customization during installation and has a flexible deployment strategy. It can operate in offline environments (at no extra cost) for even better protection.

Nagios XI is perfect for...

- Any organization, from small nonprofits to large corporations, that experience change and growth.
- Organizations that want to hit the ground running with a fully built-out monitoring solution, rather than a heavily do-it-yourself solution that requires significant effort to fit their needs.
- IT teams with various levels of experience.
- IT teams that need to dig into the root cause of a problem and find exactly what's happening and why.



Interested in trying it out?

Start Your Nagios XI 5.8 Trial

Feature Comparison: Nagios XI vs Nagios Core

Feature	Nagios XI	Nagios Core
Monitoring and alerting capabilities	X	X
Ability to monitor any device or application	X	X
A complete monitoring, alerting, graphing, and reporting solution presented in one dashboard for everything within an IT infrastructure	X	Monitoring and alerting only
Users can create plugins and scripts	X	X
Graphical dashboard that displays the reports and status of an entire IT infrastructure	X	
Doesn't require a deep understanding of line code; users work within an intuitive interface and point-and-click features	X	
70+ monitoring wizards for fast set-up of common devices	X	
Multi-tenant	X	
Regular updates and additions to wizard library	X	
Capacity planning reports	X	
Business process intelligence	X	
Scheduled reports and pages	X	
Bulk modification and cloning tools	X	
SLA reports	X	
SNMP Trap interface	X	
Automated deployment tools	X	
Comparative, historical and customizable reports that reveal the root cause of a problem	X	
Intuitive charts, graphs and pre-built reports to support easy capacity planning and analysis	X	
Advanced network maps (World Map, Hypermap, Nagvis, etc.) to quickly locate devices	X	
Prediction reports for effective capacity planning and scaling	X	
Bulk modification tools that update thousands of devices at once	X	
Standard security measures and compliance	X	Users ensure compliance and security standards are met
Various support packages offered	X	Community forum only

Ready to save hours of time and get a better understanding of your infrastructure?

Get full access to our support tickets, customer forum, knowledgebase, and Quick Start!

[Start Your Nagios XI 5.8 Trial](#)