



**Title: Sound Absorption Test Results**

**Product: 1" Sound Silencer**

Application: Ceiling

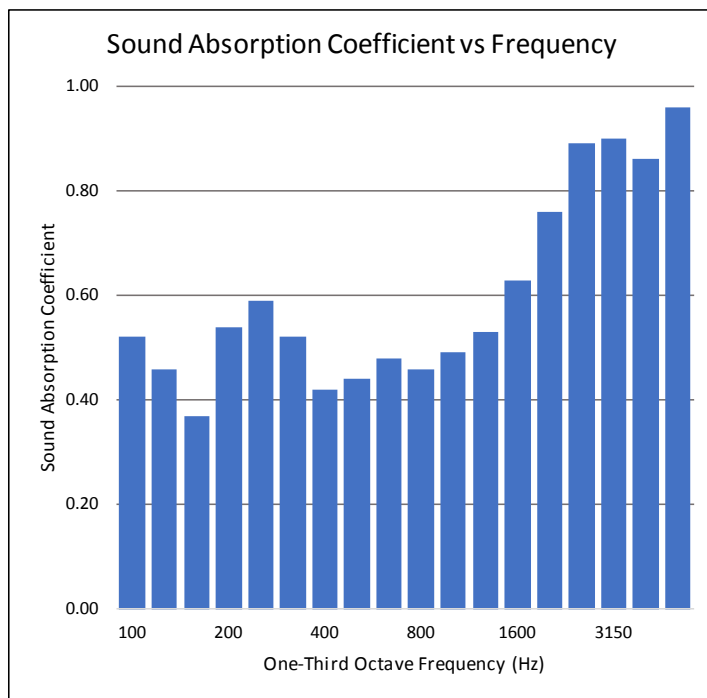
Testing Standard: ASTM C423 E-Mount with 16" airspace

Test Date: 10/30/2002

Why this test: This test evaluates a products efficiency of absorbing sound at multiple frequencies. The test simulates the product's acoustical performance for ceiling installation with a 16" airspace.

Test Result Summary: NRC - 0.55; SAA - 0.56

NRC	SAA
0.55	0.56
Frequency (Hz)	Absorption Coefficient
100	0.52
125	0.46
160	0.37
200	0.54
250	0.59
315	0.52
400	0.42
500	0.44
630	0.48
800	0.46
1000	0.49
1250	0.53
1600	0.63
2000	0.76
2500	0.89
3150	0.90
4000	0.86
5000	0.96



**ASI TEST RESULT DISCLAIMER**

ASI makes every effort to ensure the accuracy and reliability of the information provided. Laboratory testing is conducted by independent testing organizations. ASI does not guarantee that field tests or independent tests will not vary.

Filename

Test#13 - 1 PEPP

### ASTM C423 - Sound Absorption

Project Folder

Client

Acoustical Surfaces

Product

Absorption Material

Model #

6-Panels

Quantity

1

Comment

1" PEPP type E mounting

Sample Size - Wt

72.0 in x 95.0 in x 0 lbs.

Sample Description #

6 Panels - 1" PEPP in 16" airspace box : Type E mounting, 6 panels. :

Time Stamp

Wed. Oct. 30, 2002 - 2:26 PM

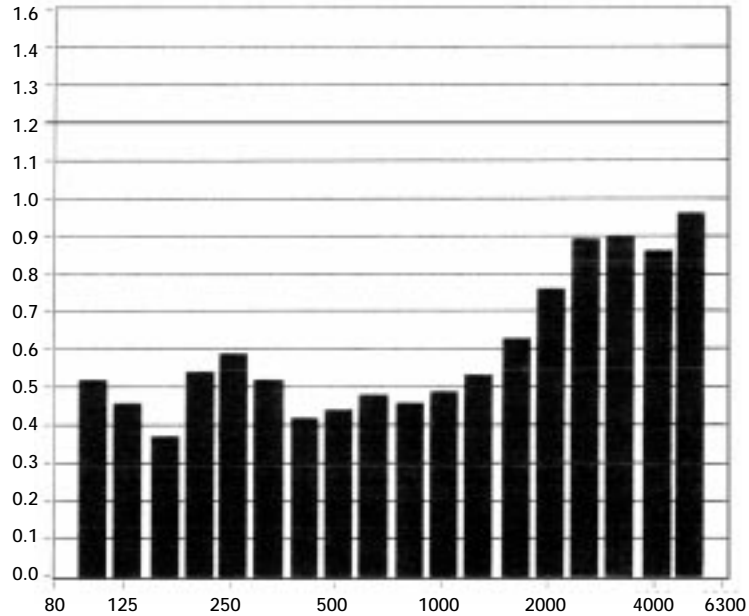
Total Sample Area

47.5 ft<sup>2</sup>

F (Hz)	Absorption Coefficient	Absorption (Sabins)*
100	0.52	24.50
125	0.46	22.02
160	0.37	17.62
200	0.54	25.51
250	0.59	27.84
315	0.52	24.52
400	0.42	20.17
500	0.44	20.99
630	0.48	22.76
800	0.46	21.70
1000	0.49	23.40
1250	0.53	25.17
1600	0.63	29.99
2000	0.76	36.14
2500	0.89	42.38
3150	0.90	42.84
4000	0.86	40.68
5000	0.96	45.66

Absorption Coefficient

#### Sound Absorption Coefficients



Temp (\*C)

22.0

R.H. (%)

63

ATM (mbar)

990

\*Total absorption based on 47.5 ft<sup>2</sup>

$SAA = 0.56$      $NRC = 0.55$