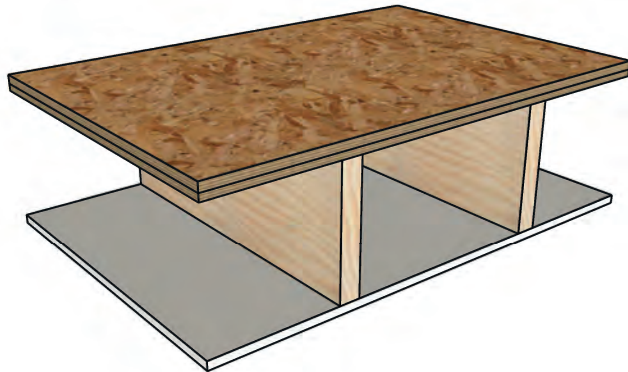


Floor-Ceiling Assemblies

Figure 274



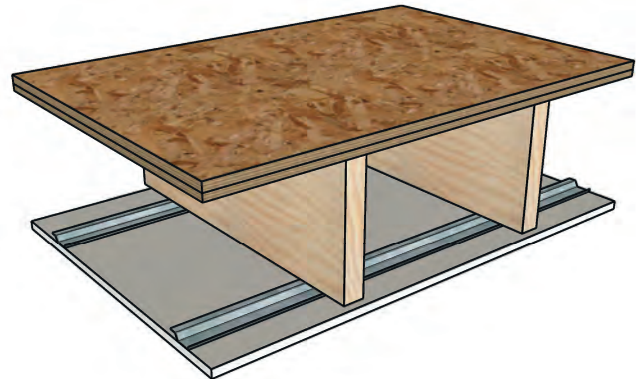
STC-37 **NGC 4024**
IIC-66 (carpet and pad) **NGC 5033**

Framing: 2x10 wood joists, 16" o.c.
 Insulation: None
 Floor: 3/8" plywood on 1/2" plywood subfloor

Ceiling: 1/2" Fire-Shield C Gypsum Board

UL Design: L522 - 1 hour

Figure 275



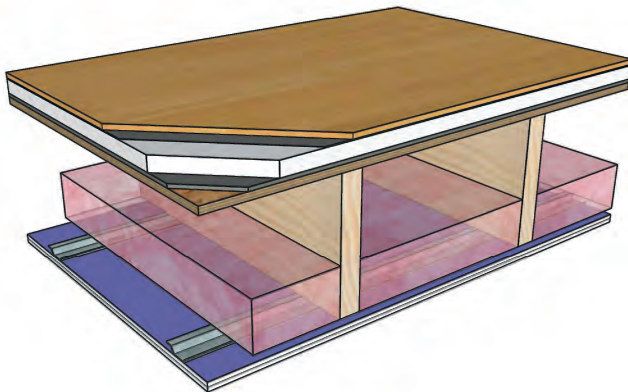
STC-45 **NGC 4107**
IIC-63 (carpet and pad) **NGC 5165**

Framing: 2x10 wood joists, 16" o.c.
 Insulation: None
 Floor: 3/8" plywood on 1/2" plywood subfloor

Ceiling: 1/2" Fire-Shield C Gypsum Board on RC-1

UL Design: L502 - 1 hour

Figure 276

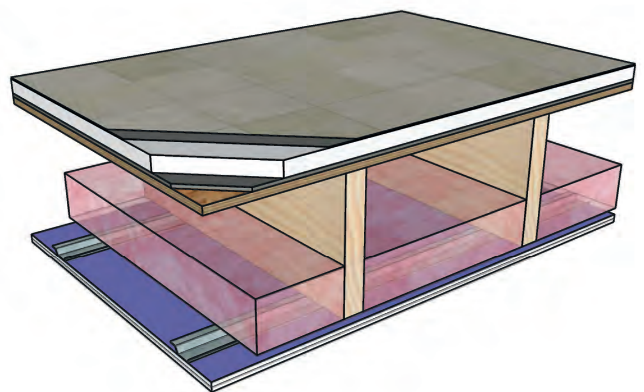


STC-58 **NGC 5018017**
IIC-59 **NGC 7018007**

Framing: 2x10 wood joists, 16" o.c.
 Insulation: 3-1/2" glass fiber
 Floor: Engineered wood on foam mat on 1" gypsum underlayment on 1/4" random filament sound control mat on 5/8" plywood
 Ceiling: 3/4" SoundBreak XP Ceiling Board on RC-1

UL Design: M514 - 1 hour

Figure 277



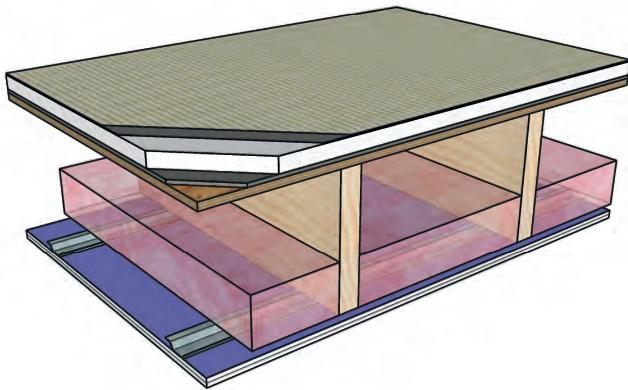
STC-58 **NGC 5018018**
IIC-60 **NGC 7018008**

Framing: 2x10 wood joists, 16" o.c.
 Insulation: 3-1/2" glass fiber
 Floor: Vinyl tile on foam mat on 1" gypsum underlayment on 1/4" random filament sound control mat on 5/8" plywood
 Ceiling: 3/4" SoundBreak XP Ceiling Board on RC-1

UL Design: M514 - 1 hour

Floor-Ceiling Assemblies

Figure 278



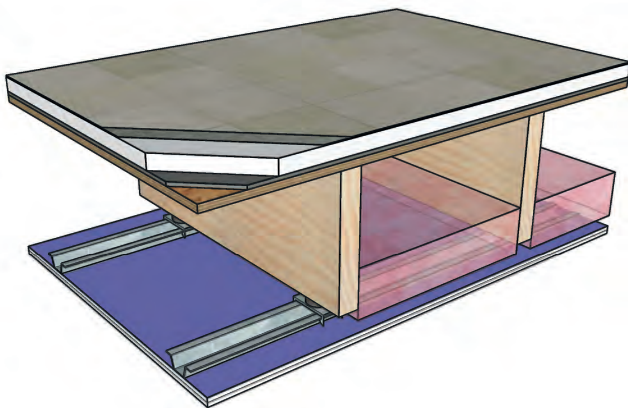
STC-58
IIC-78

NGC 5018019
NGC 7018009

Framing: 2x10 wood joists, 16" o.c.
Insulation: 3-1/2" glass fiber
Floor: Carpet on foam mat on 1" gypsum underlayment on 1/4" random filament sound control mat on 5/8" plywood
Ceiling: 3/4" SoundBreak XP Ceiling Board on RC-1

UL Design: M514 - 1 hour

Figure 280

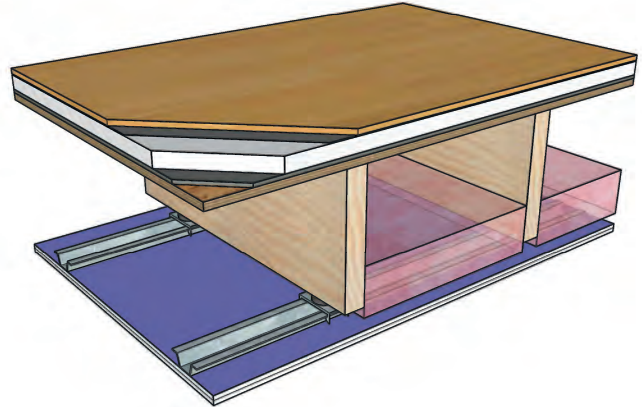


STC-58
IIC-65

NGC 5019007
NGC 7019007

Framing: 2x10 wood joists, 16" o.c.
Insulation: 3-1/2" glass fiber
Floor: Vinyl tile on foam mat on 1" gypsum underlayment on 1/4" random filament sound control mat on 15/32" plywood
Ceiling: 3/4" SoundBreak XP Ceiling Board on 7/8" furring channel and resilient isolation clips
UL Design: M514 - 1 hour

Figure 279

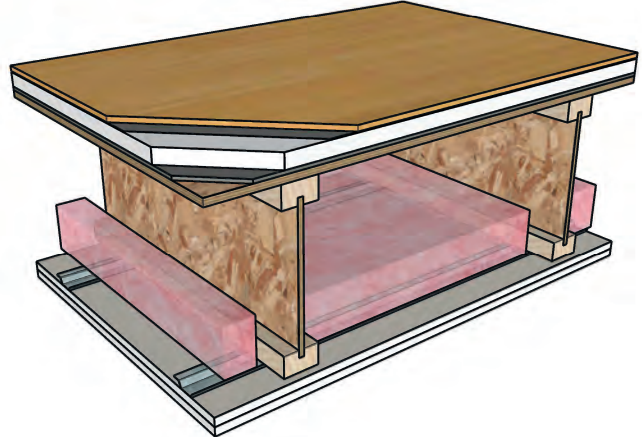


STC-59
IIC-61

NGC 5019008
NGC 7019008

Framing: 2x10 wood joists, 16" o.c.
Insulation: 3-1/2" glass fiber
Floor: Engineered wood on foam mat on 1" gypsum underlayment on 1/4" random filament sound control mat on 15/32" plywood
Ceiling: 3/4" SoundBreak XP Ceiling Board on 7/8" furring channel and resilient isolation clips
UL Design: M514 - 1 hour

Figure 281



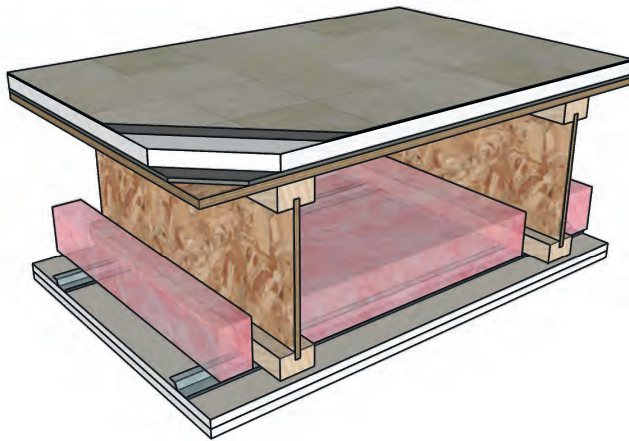
STC-58
IIC-61

NGC 5019076
NGC 7019100

Framing: 12" wood I-joists, 24" o.c.
Insulation: 3-1/2" glass fiber
Floor: Engineered wood on foam mat on 3/4" gypsum underlayment on 1/8" random filament sound control mat on 3/4" OSB
Ceiling: 2 layers 1/2" Fire-Shield C Gypsum Board on RC-1
UL Design: M546 - 1 hour

Floor-Ceiling Assemblies

Figure 282

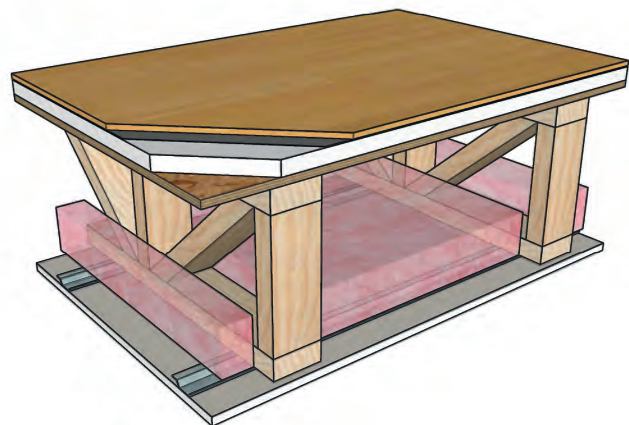


STC-58
IIC-62

NGC 5019075
NGC 7019099

Framing: 12" wood I-joists, 24" o.c.
Insulation: 3-1/2" glass fiber
Floor: Vinyl tile on foam mat on 3/4" gypsum underlayment on 1/8" random filament sound control mat on 3/4" OSB
Ceiling: 2 layers 1/2" Fire-Shield C Gypsum Board on RC-1
UL Design: M546 - 1 hour

Figure 284

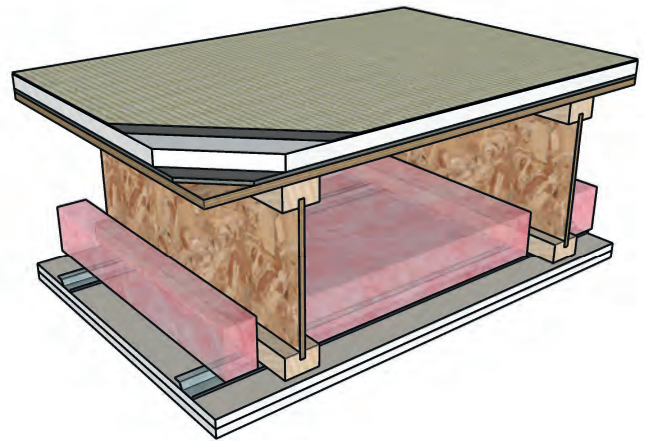


STC-55
IIC-49

NGC 5011031
NGC 7011056

Framing: 18" wood trusses, 24" o.c.
Insulation: 3-1/2" glass fiber
Floor: Engineered wood on foam mat on 3/4" gypsum underlayment on 5/8" plywood
Ceiling: 5/8" Fire-Shield C Gypsum Board on RC-1
UL Design: L563, L558 - 1 hour

Figure 283

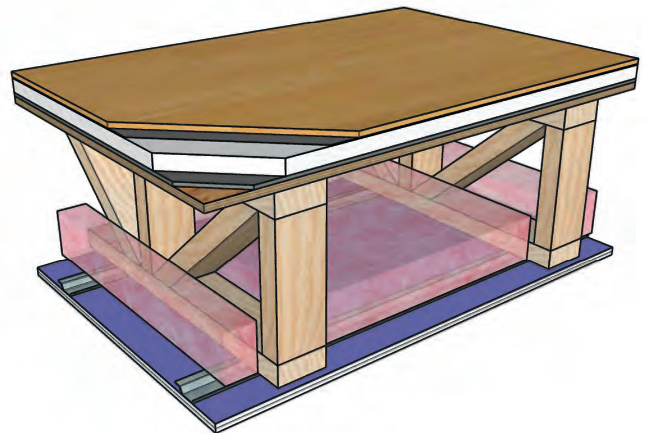


STC-57
IIC-78

NGC 5019074
NGC 7019098

Framing: 12" wood I-joists, 24" o.c.
Insulation: 3-1/2" glass fiber
Floor: Carpet on foam mat on 3/4" gypsum underlayment on 1/8" random filament sound control mat on 3/4" OSB
Ceiling: 2 layers 1/2" Fire-Shield C Gypsum Board on RC-1
UL Design: M546 - 1 hour

Figure 285



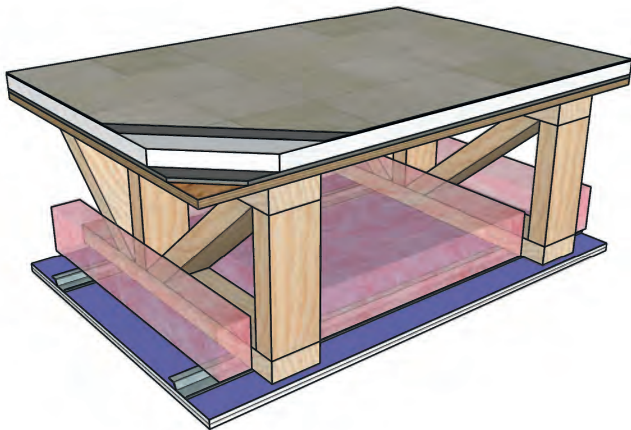
STC-59
IIC-57

NGC 5018077
NGC 7018105

Framing: 18" wood trusses, 24" o.c.
Insulation: 3-1/2" glass fiber
Floor: Engineered wood on foam mat on 1" gypsum underlayment on 1/4" random filament sound control mat on 23/32" OSB
Ceiling: 3/4" SoundBreak XP Ceiling Board on RC-1
UL Design: M545 - 1 hour

Floor-Ceiling Assemblies

Figure 286



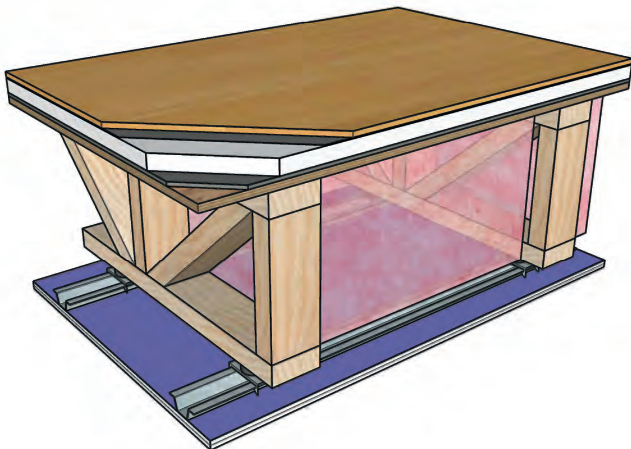
STC-59
IIC-57

NGC 5018078
NGC 7018106

Framing: 18" wood trusses, 24" o.c.
Insulation: 3-1/2" glass fiber
Floor: Vinyl tile on foam mat on 1" gypsum underlayment on 1/4" random filament sound control mat on 23/32" OSB
Ceiling: 3/4" SoundBreak XP Ceiling Board on RC-1

UL Design: M545 - 1 hour

Figure 288



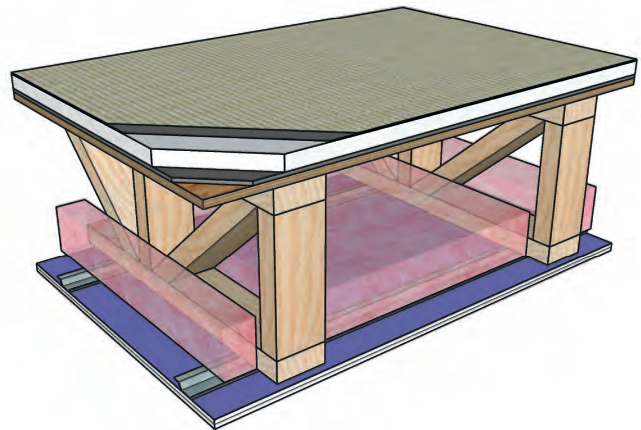
STC-60
IIC-61

NGC 5018118
NGC 7018160

Framing: 18" wood trusses, 24" o.c.
Insulation: 18" glass fiber
Floor: Engineered wood on foam mat on 1" gypsum underlayment on 1/4" random filament sound control mat on 23/32" OSB
Ceiling: 3/4" SoundBreak XP Ceiling Board on 7/8" furring channel and resilient isolation clips

UL Design: M545 - 1 hour

Figure 287



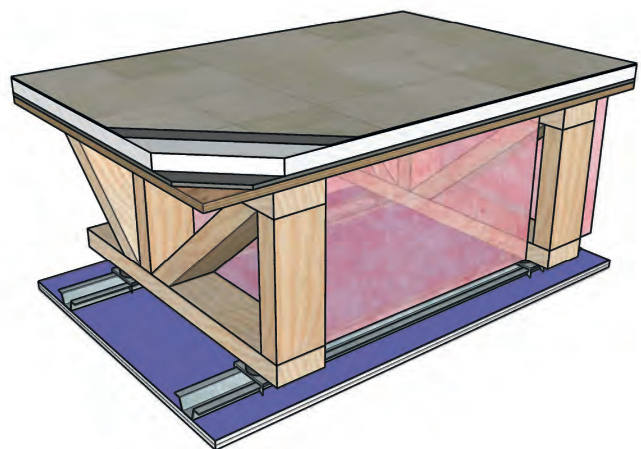
STC-58
IIC-79

NGC 5018080
NGC 7018108

Framing: 18" wood trusses, 24" o.c.
Insulation: 3-1/2" glass fiber
Floor: Carpet on foam mat on 1" gypsum underlayment on 1/4" random filament sound control mat on 23/32" OSB
Ceiling: 3/4" SoundBreak XP Ceiling Board on RC-1

UL Design: M545 - 1 hour

Figure 289



STC-60
IIC-61

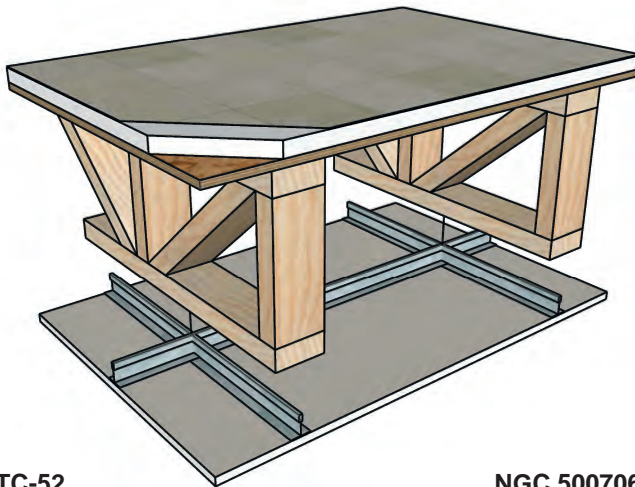
NGC 5018119
NGC 7018161

Framing: 18" wood trusses, 24" o.c.
Insulation: 18" glass fiber
Floor: Vinyl tile on foam mat on 1" gypsum underlayment on 1/4" random filament sound control mat on 23/32" OSB
Ceiling: 3/4" SoundBreak XP Ceiling Board on 7/8" furring channel and resilient isolation clips

UL Design: M545 - 1 hour

Floor-Ceiling Assemblies

Figure 290



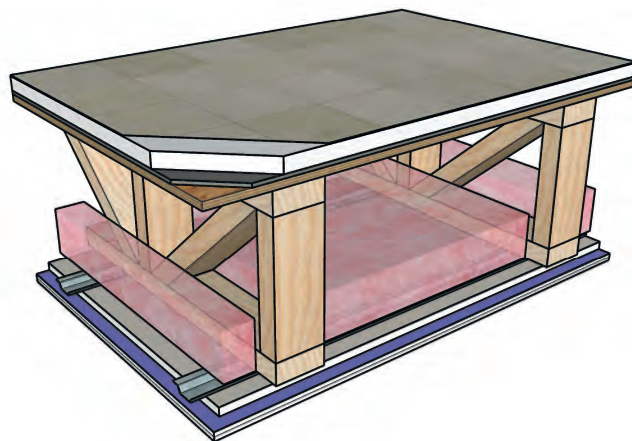
STC-52
IIC-51

NGC 5007061
NGC 7007119

Framing: 18" wood trusses, 24" o.c.
Insulation: None
Floor: Vinyl flooring on 1" gypsum underlayment on 3/4" OSB
Ceiling: 5/8" Fire-Shield C Gypsum Board on suspended ceiling grid system

UL Design: L558, L563 - 1 hour

Figure 292



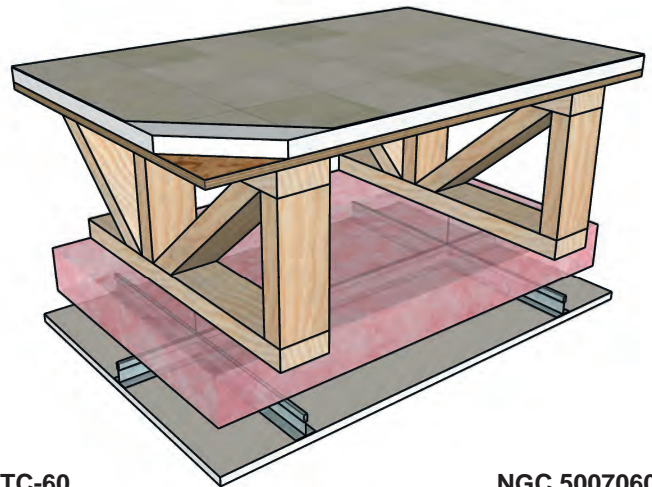
STC-58
IIC-51

NGC 5007054
NGC 7007110

Framing: 18" wood trusses, 24" o.c.
Insulation: 3-1/2" glass fiber
Floor: Vinyl flooring on 3/4" gypsum underlayment on 0.18" rubber underlayment on 3/4" OSB
Ceiling: 5/8" SoundBreak XP Wall Board on 5/8" Fire-Shield C Gypsum Board on RC-1

UL Design: L558, L563 - 1 hour

Figure 291



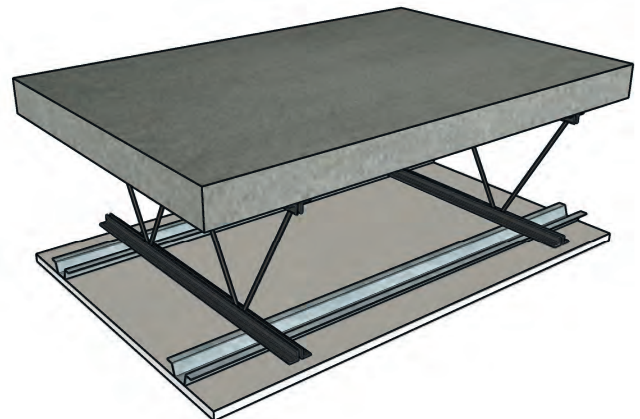
STC-60
IIC-60

NGC 5007060
NGC 7007118

Framing: 18" wood trusses, 24" o.c.
Insulation: 3-1/2" glass fiber
Floor: Vinyl flooring on 1" gypsum underlayment on 3/4" OSB
Ceiling: 5/8" Fire-Shield C Gypsum Board on suspended ceiling grid system

UL Design: L558, L563 - 1 hour

Figure 293



STC-53
IIC-67 (carpet and pad)

NGC 4075
NGC 5122

Framing: 10J2 bar joists, 24" o.c.
Insulation: None
Floor: 2-1/2" concrete on 3/8" rib lath or steel deck
Ceiling: 1/2" Fire-Shield C Gypsum Board on 7/8" steel furring channel

UL Design: G514 - 2 hour