



Title: Fire Test Results

Product: 1" Poly Max - White

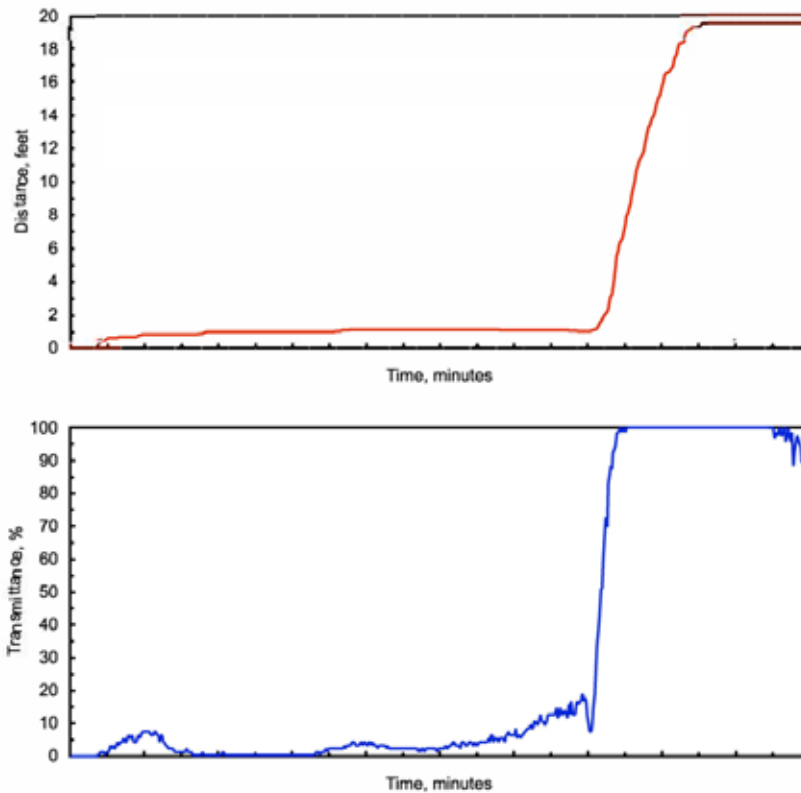
Application: Wall or Ceiling

Testing Standard: ASTM E84

Test Date: 1/20/2020

Why this test: This test evaluates products surface burning characteristics. Products are rated on the distance a flame travels across the product as well as the amount of smoke that is created during the exposure to fire.

Test Result Summary: Class A, Flame Spread: 25; Smoke Developed: 450



Test ID: 5516-4781

ASI TEST RESULT DISCLAIMER

ASI makes every effort to ensure the accuracy and reliability of the information provided. Laboratory testing is conducted by independent testing organizations. ASI does not guarantee that field tests or independent tests will not vary.

©2020 ASI



COMMERCIAL TESTING COMPANY

1215 South Hamilton Street • Dalton, Georgia 30720
Telephone (706) 278-3935 • Facsimile (706) 278-3936

Standard Method of Test for
Surface Burning Characteristics of Building Materials

ASTM E84-19b

1" Poly Max 7.5pcf White

Report Number 20-01179

Test Number 5516-4781
January 20, 2020

ASI
Chaska, MN

Commercial Testing Company

(Authorized Signature)

This report is provided for the exclusive use of the client to whom it is addressed. It may be used in its entirety to gain product acceptance from duly constituted authorities. The test results presented in this report apply only to the samples tested and are not necessarily indicative of apparent identical or similar materials. Sample selection and identification were provided by the client. A sampling plan, if described in the referenced test procedure, was not necessarily followed. This report, or the name of Commercial Testing Company, shall not be used under any circumstance in advertising to the general public.

TESTED TO BE SURE®
Since 1974

INTRODUCTION

This report is a presentation of results of a surface flammability test on a material submitted by ASI, Chaska, MN.

The test was conducted in accordance with the ASTM International fire-test-response standard E84-19b, *Surface Burning Characteristics of Building Materials*, sometimes referred to as the Steiner tunnel test. ASTM E84 is an American National Standard (ANSI) and has been approved for use by agencies of the Department of Defense. The ASTM E84 test method is the technical equivalent of UL No. 723. The test is applicable to exposed interior surfaces such as walls and ceilings. The test is conducted with the specimen in the ceiling position with the surface to be evaluated face down toward the ignition source. Thus, specimens shall either be self-supporting by its own structural quality, held in place by added supports along the test surface, or secured from the back side.

This standard is used to measure and describe the response of materials, products, or assemblies to heat and flame under controlled conditions, but does not by itself incorporate all factors required for fire-hazard or fire-risk assessment of the materials, products, or assemblies under actual fire conditions.

PURPOSE

The purpose of the test is to provide only the comparative measurements of surface flame spread and smoke development of materials with that of select grade red oak and fiber-reinforced cement board, Grade II, under specific fire exposure conditions with the smoke area of heptane used to establish the smoke-developed index. The test exposes a nominal 24-foot long by 20-inch wide test specimen to a controlled air flow and flaming fire adjusted to spread the flame along the entire length of a red oak specimen in 5½ minutes. During the 10-minute test duration, flame spread over the specimen surface are measured and recorded. Test results are calculated relative to red oak, which has an arbitrary rating of 100, and fiber-reinforced cement board, Grade II, which has a rating of 0. The 100 smoke-developed index is calculated using the smoke area of heptane.

The test results are expressed as Flame Spread Index and Smoke-Developed Index. The Flame Spread Index is defined in ASTM E176 as "a number or classification indicating a comparative measure derived from observations made during the progress of the boundary of a zone of flame under defined test conditions." The Smoke-Developed Index, a term specific to ASTM E84, is defined as "a number or classification indicating a comparative measure derived from smoke obscuration data collected during the test for surface burning characteristics." There is not necessarily a relationship between the two measurements.

The method does not provide for measurement of heat transmission through the surface tested, the effect of aggravated flame spread behavior of an assembly resulting from the proximity of combustible walls and ceilings, or classifying a material as noncombustible solely by means of a Flame Spread Index.

The zero reference and other parameters critical to furnace operation are verified on the day of the test by conducting a 10-minute test using 1/4-inch fiber-reinforced cement board, Grade II. Periodic tests using NOFMA certified 23/32-inch select grade red oak flooring provide data for the 100 flame spread reference with heptane providing data for calculating the 100 smoke-developed index. These procedures are more fully described in Section 7 of the E84 Standard.

TEST SAMPLE

The test sample, selected by the client, was identified as **1" Poly Max 7.5pcf White**, a polyester acoustic board. Six test panels, each measuring 24 inches wide by 48 inches in length, were received. They were physically self-supporting and required no additional sample preparation. The panels were transferred to storage racks and conditioned to equilibrium in an atmosphere with the temperature maintained at $71 \pm 2^\circ\text{F}$ and the relative humidity at 50 ± 5 percent. For testing, the panels were placed end-to-end on the ledges of the tunnel furnace to make up the necessary 24-foot test sample and the test conducted with no auxiliary support mechanism.

TEST RESULTS

The test results, calculated on the basis of observed flame propagation and the integrated area under the recorded smoke density curve, are presented below. The Flame Spread Index obtained in E84 is rounded to the nearest number divisible by five. Smoke-Developed Indices are rounded to the nearest number divisible by five unless the Index is greater than 200. In that case, the Smoke-Developed Index is rounded to the nearest 50 points. The rounding procedures are more fully described in Sections 9.1, 9.2, and X3 of the E84 Standard. The flame spread and smoke development data are presented graphically at the end of this report.

Test Specimen	Flame Spread Index	Smoke-Developed Index
Fiber-Reinforced Cement Board, Grade II	0	0
Red Oak Flooring	100	—
Heptane, (HPLC) Grade	—	100
1" Poly Max 7.5pcf White	25	450

OBSERVATIONS

Specimen ignition over the burners occurred at 0.25 minute. Surface flame spread was observed to a maximum distance of 19.50 feet beyond the zero point at 8.55 minutes. The maximum temperature recorded during the test was 1,213°F. For information purposes, the actual (unrounded) Flame Spread and Smoke-Developed Indices were 26.9 and 438.4 respectively.

CLASSIFICATION

The Flame Spread Index and Smoke-Developed Index values obtained by ASTM E84 tests are frequently used by code officials and regulatory agencies in the acceptance of interior finish materials for various applications. The most widely accepted classification system is described in the National Fire Protection Association publication NFPA 101 *Life Safety Code*, where:

Class A	0 – 25 Flame Spread Index	0 – 450 Smoke-Developed Index
Class B	26 – 75 Flame Spread Index	0 – 450 Smoke-Developed Index
Class C	76 – 200 Flame Spread Index	0 – 450 Smoke-Developed Index

Class A, B, and C correspond to Type I, II, and III respectively in other codes. They do not preclude a material being otherwise classified by the authority of jurisdiction.

ASTM E 84 TEST DATA

Client: ASI
Test Number: 5516-4781
Material Tested: 1" Poly Max 7.5pcf White
Date: January 20, 2020

Test Results:

Time to Ignition = 00.25 minutes
Maximum Flamespread Distance = 19.50 feet
Time to Maximum Spread = 08.55 minutes

Flame Spread Index = 25
Smoke Developed Index = 450

