

## POLY MAX - Z-CLIP: INSTALLATION INSTRUCTIONS

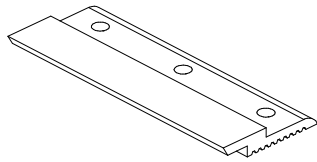
**ATTENTION:** If you have additional questions after reviewal of this manual please contact your local ASI representative or an ASI professional at our headquarters (952)448-5300

ASI MANUFACTURES DECORATIVE ACOUSTICAL PANELS AND PRODUCTS THAT MUST BE HANDLED WITH CARE. PRODUCTS SHOULD ONLY BE INSTALLED BY EXPERIENCED INSTALLERS.

### INSTALLATION

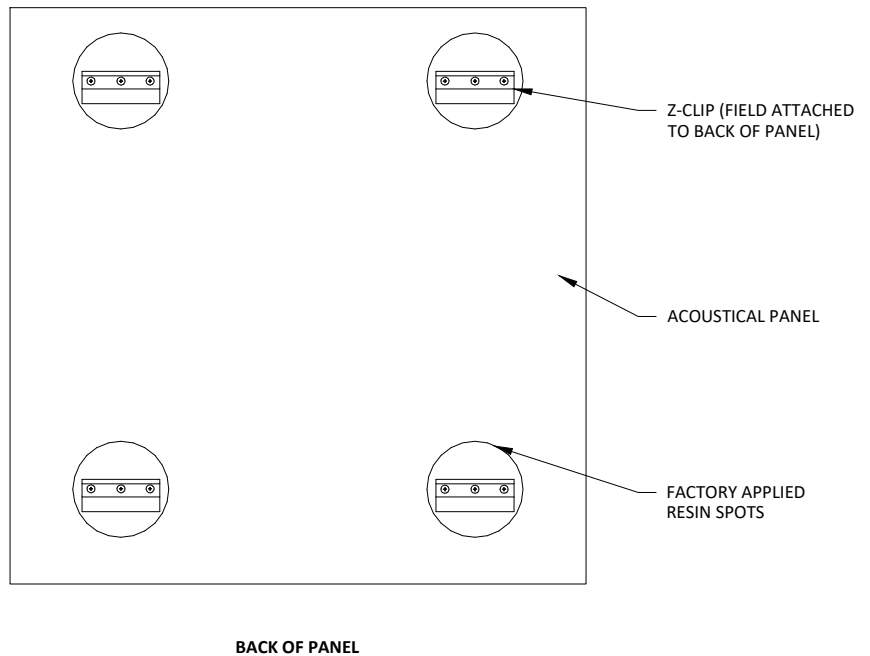
Good tools are needed to install panels if cutting is necessary. Care needs to be taken when cutting and fitting around windows, light switches and other penetrations. To achieve this, the following tools are recommended: anchors and fasteners appropriate for mounting surface, utility knife, drywall square

ASI recommends painting the walls or ceilings black at the perimeter to help conceal the expansion joints at the edges of the wall or ceiling system.



### Z-Clip Hardware

A z-clip hardware kit may be shipped with your panels. A drill with a phillips bit and drywall screws are necessary for z-clip install.



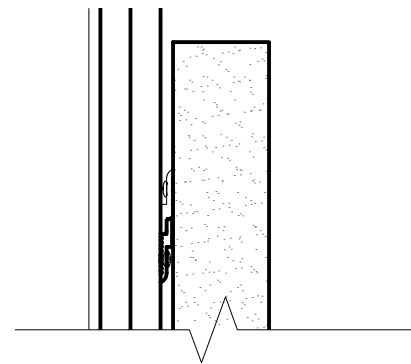
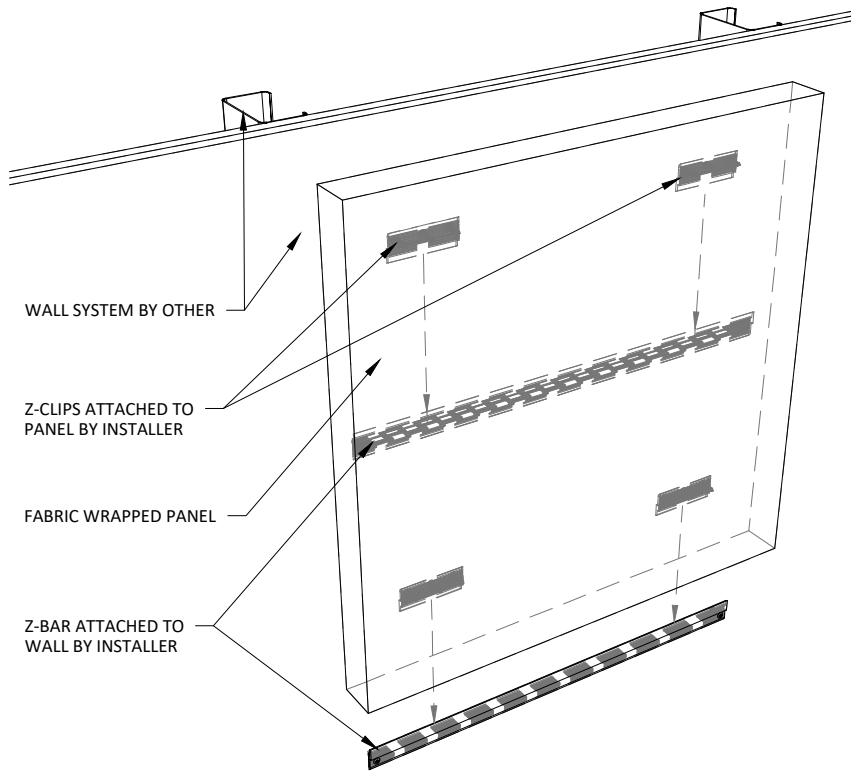
# POLY MAX - Z-CLIP: INSTALLATION INSTRUCTIONS

## Z-Clip Installation Instructions

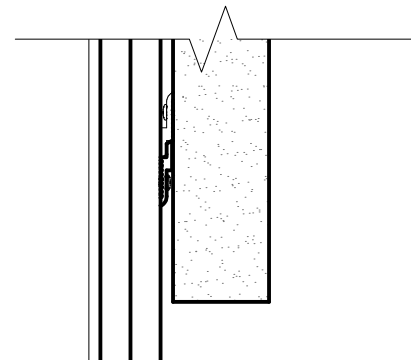
Install clips on the back of the panel at resin spot locations. The raised edge of the clip should face the bottom edge of the panel. Measure the distance between the center of each bracket on the back of the panel, between top and bottom clips horizontally and vertically.

Attach the first clip to the desired location on the wall with the raised edge facing up using the supplied drywall anchors and screws. Using a level and tape measure, mark the locations of the remaining clips. Ensure that the clips are level with one another. If installing on a concrete wall, we recommend using concrete anchors (not included) in the wall prior to installing the clips.

Once all clips are installed, slide the panel down onto the wall clips. The panel attachments should fit securely in the wall clips. Check your work with the level. Adjust as necessary.



FULLY INSTALLED PANEL - SECTION AT TOP



FULLY INSTALLED PANEL - SECTION AT BOTTOM