



U.S. Dairy
Export Council

Ingredients | Products | Global Markets



U.S. Dairy Export Data: June 2021



Table of Contents

- I. Summary
- II. Total Milk Solids
- III. NFDM/SMP
- IV. Whey (0404.10)
- V. WPC80+
- VI. Cheese
- VII. Lactose



U.S. Dairy
Export Council

Ingredients | Products | Global Markets



Summary



Year-To-Date Performance: January - June

Category	2019	2020	2021	'20-'21 % Change	'20-'21 Vol Change	Unit
Total Export Value	\$2,950.4	\$3,361.7	\$3,809.4	13.3%	\$447.7	Million \$
Total Milk Solids	906,237	1,049,449	1,183,185	12.7%	133,736	MT
SMP/NFDM	327,965	408,623	469,644	14.9%	61,021	MT
Dry Whey Products	225,280	257,588	318,607	23.7%	61,018	MT
<i>Whey (0404.10)</i>	203,105	229,304	285,087	24.3%	55,782	MT
<i>WPC80+</i>	22,175	28,284	33,520	18.5%	5,236	MT
Cheese	192,096	192,538	197,037	2.3%	4,498	MT
Lactose	186,525	199,996	197,922	-1.0%	-2,075	MT
WMP	15,284	20,474	21,401	4.5%	927	MT
Butterfat	13,675	11,648	26,716	129.4%	15,068	MT
MPC	17,406	23,103	21,232	-8.1%	-1,871	MT
Infant Formula	17,027	17,767	14,286	-19.6%	-3,481	MT
Evap/Cond Milk	8,153	5,444	6,423	18.0%	979	MT
Casein	1,348	1,686	1,120	-33.6%	-566	MT
Fluid Milk/Cream	65,496	64,564	71,312	10.5%	6,748	000 L

Month Of Performance: June

Category	2019	2020	2021	'20-'21 % Change	'20-'21 Vol Change	Unit
Total Export Value	\$476.5	\$584.4	\$670.1	14.7%	\$85.8	Million \$
Total Milk Solids	146,007	188,620	199,383	5.7%	10,763	MT
SMP/NFDM	42,775	75,856	81,435	7.4%	5,579	MT
Dry Whey Products	41,409	44,862	51,836	15.5%	6,973	MT
<i>Whey (0404.10)</i>	<i>38,090</i>	<i>40,480</i>	<i>45,555</i>	<i>12.5%</i>	<i>5,074</i>	<i>MT</i>
<i>WPC80+</i>	<i>3,319</i>	<i>4,382</i>	<i>6,281</i>	<i>43.3%</i>	<i>1,899</i>	<i>MT</i>
Cheese	29,798	38,492	33,461	-13.1%	-5,031	MT
Lactose	34,394	33,130	34,043	2.8%	912	MT
WMP	3,443	3,396	2,041	-39.9%	-1,355	MT
Butterfat	2,200	2,520	4,152	64.8%	1,632	MT
MPC	2,731	3,509	3,590	2.3%	81	MT
Infant Formula	2,251	3,129	2,465	-21.2%	-664	MT
Evap/Cond Milk	1,551	844	1,168	38.5%	325	MT
Casein	190	292	147	-49.6%	-145	MT
Fluid Milk/Cream	11,531	13,456	12,868	-4.4%	-587	000 L



U.S. Dairy
Export Council

Ingredients | Products | Global Markets

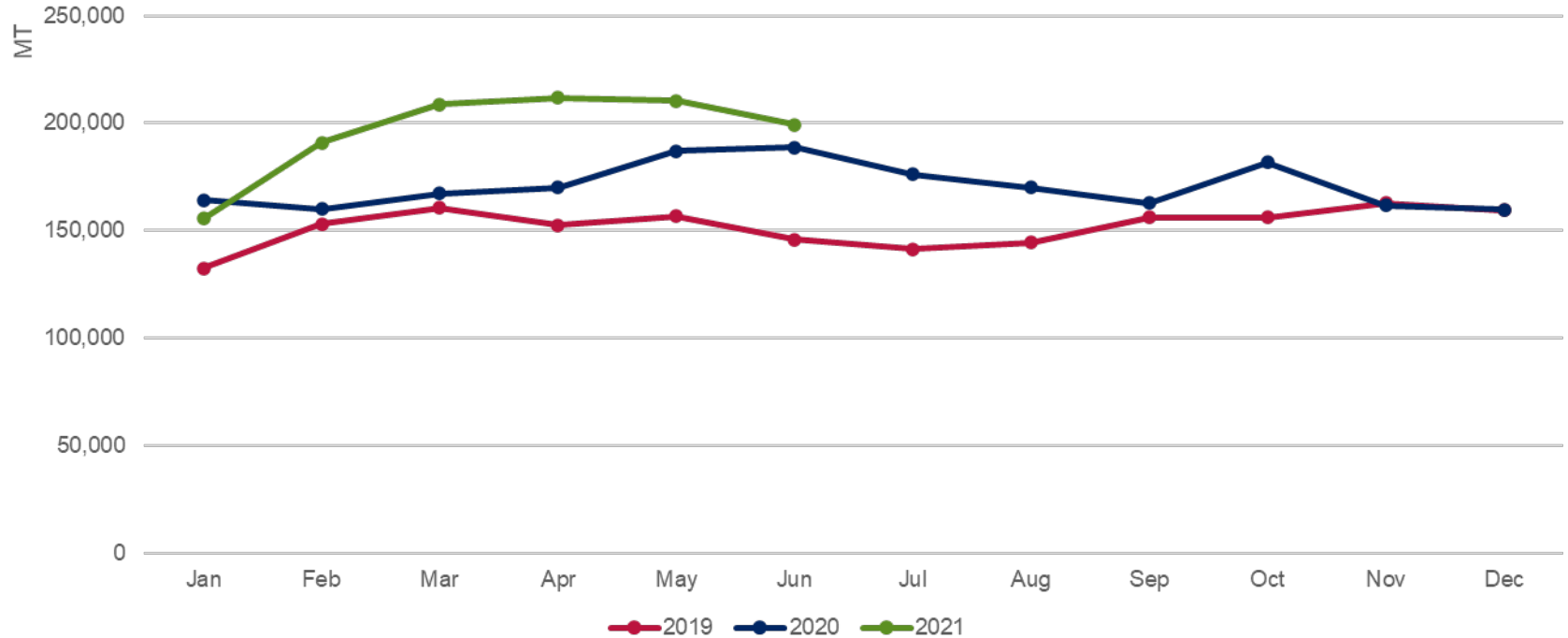


Total Milk Solids



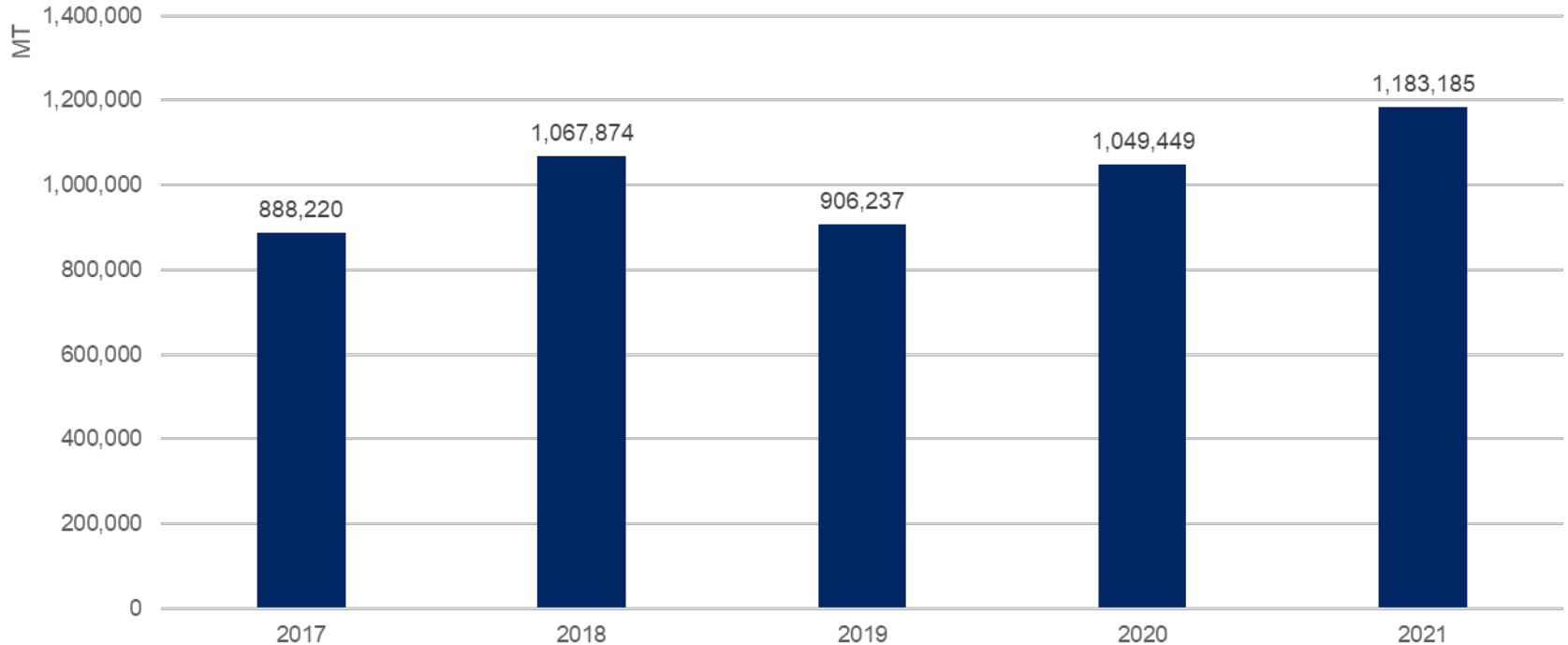
Total Milk Solids Exports

U.S. Total Milk Solids Exports: World (30-Day Months)

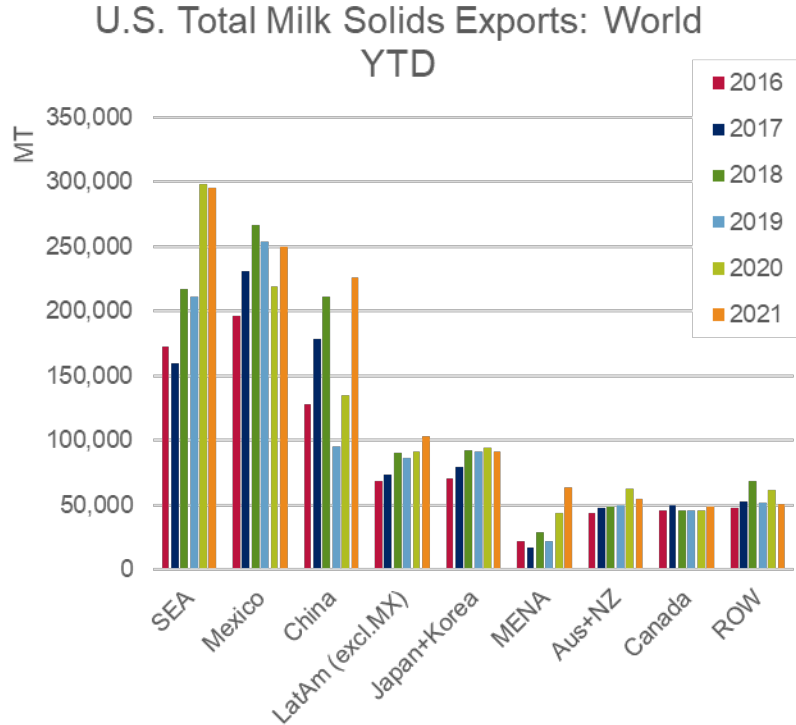


Total Milk Solids Exports

U.S. Total Milk Solids Exports: World YTD



Total Milk Solids Exports



Total Milk Solids: Year to Date				
		1	2	3
Top Markets	World	SEA	Mexico	China
% of Total Exports		28%	21%	13%
Volume	1,183,185	295,245	250,098	225,466
YOY Change	133,736	-2,803	31,428	91,056
YOY % Change	13%	-1%	14%	68%

Total Milk Solids: Month Of				
		1	2	3
Top Markets	World	Mexico	SEA	China
% of Total Exports		23%	25%	17%
Volume	199,383	50,708	47,900	40,778
YOY Change	10,763	8,053	1,675	9,329
YOY % Change	6%	19%	4%	30%



U.S. Dairy
Export Council

Ingredients | Products | Global Markets

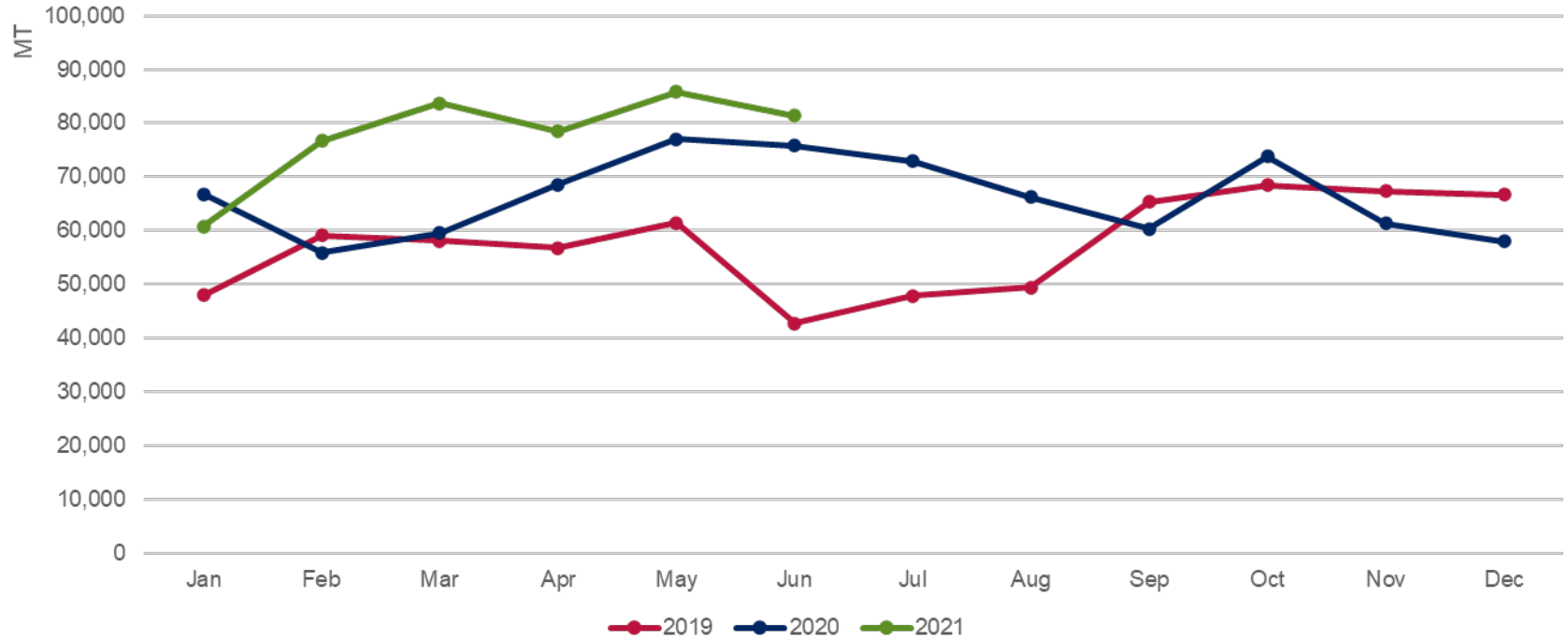


NFDM/SMP



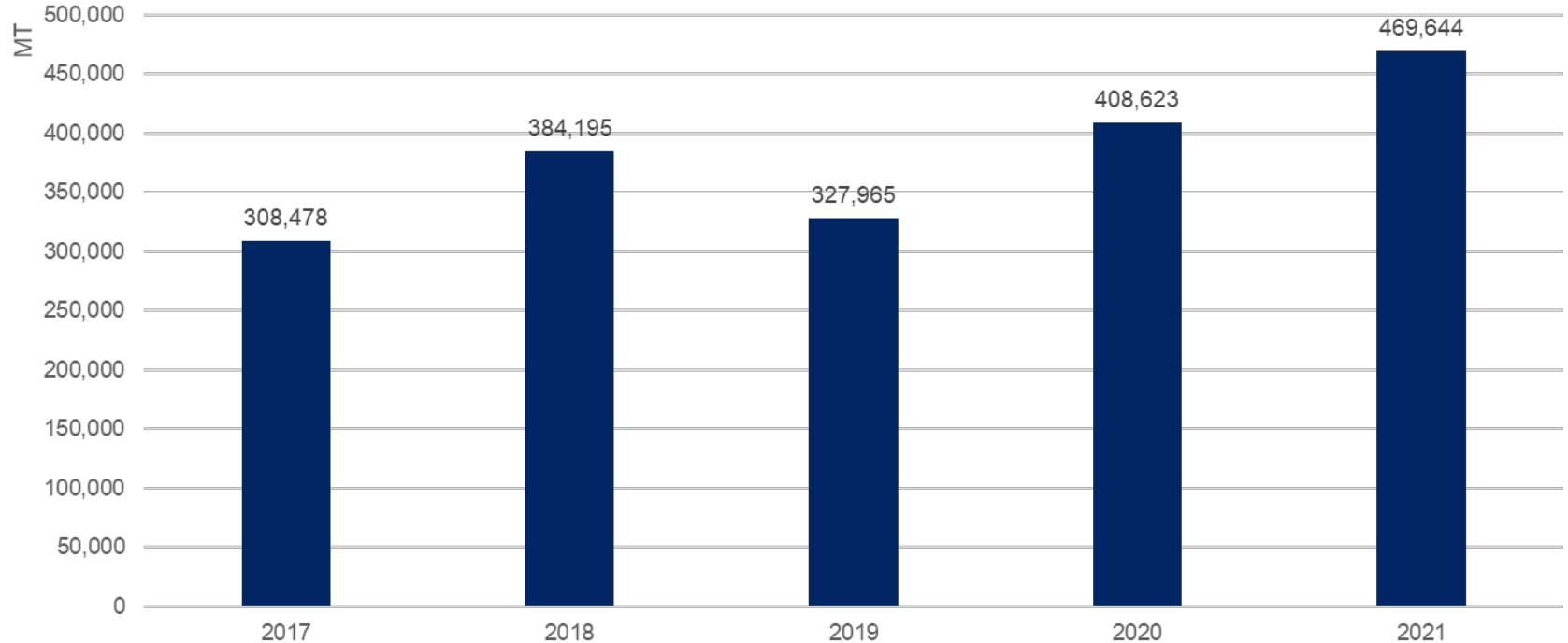
Total NFDM/SMP Exports

U.S. SMP/NFDM Exports: World (30-Day Months)



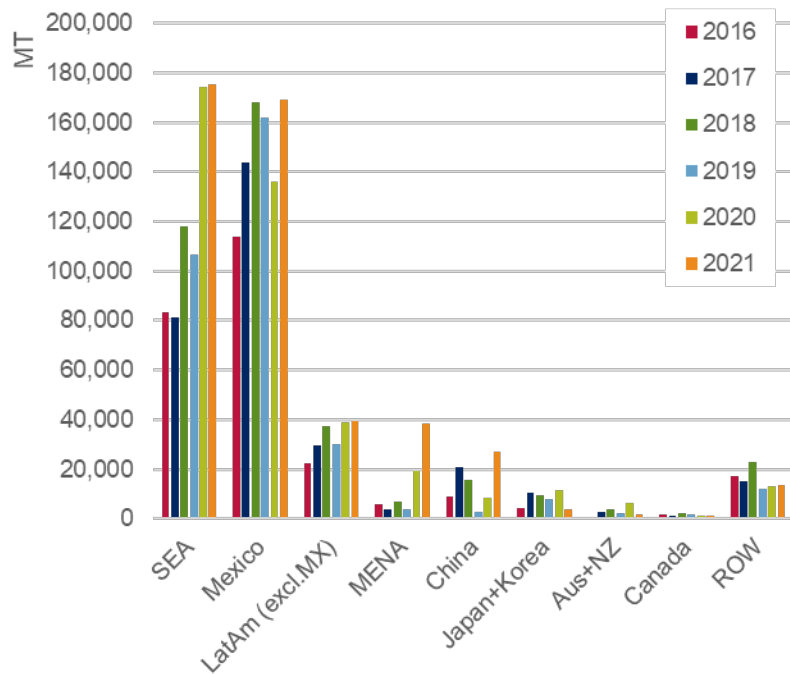
Total NFDM/SMP Exports

U.S. SMP/NFDM Exports: World YTD



Total NFDM/SMP Exports

U.S. SMP/NFDM Exports: World YTD



SMP/NFDM: Year to Date				
		1	2	3
Top Markets	World	SEA	Mexico	LatAm (excl.MX)
% of Total Exports		43%	33%	9%
Volume	469,644	175,293	169,122	39,370
YOY Change	61,021	1,133	33,288	597
YOY % Change	15%	1%	25%	2%

SMP/NFDM: Month Of				
		1	2	3
Top Markets	World	Mexico	SEA	China
% of Total Exports		36%	34%	6%
Volume	81,435	34,509	27,781	6,432
YOY Change	5,579	7,552	1,782	2,162
YOY % Change	7%	28%	7%	51%



U.S. Dairy
Export Council

Ingredients | Products | Global Markets

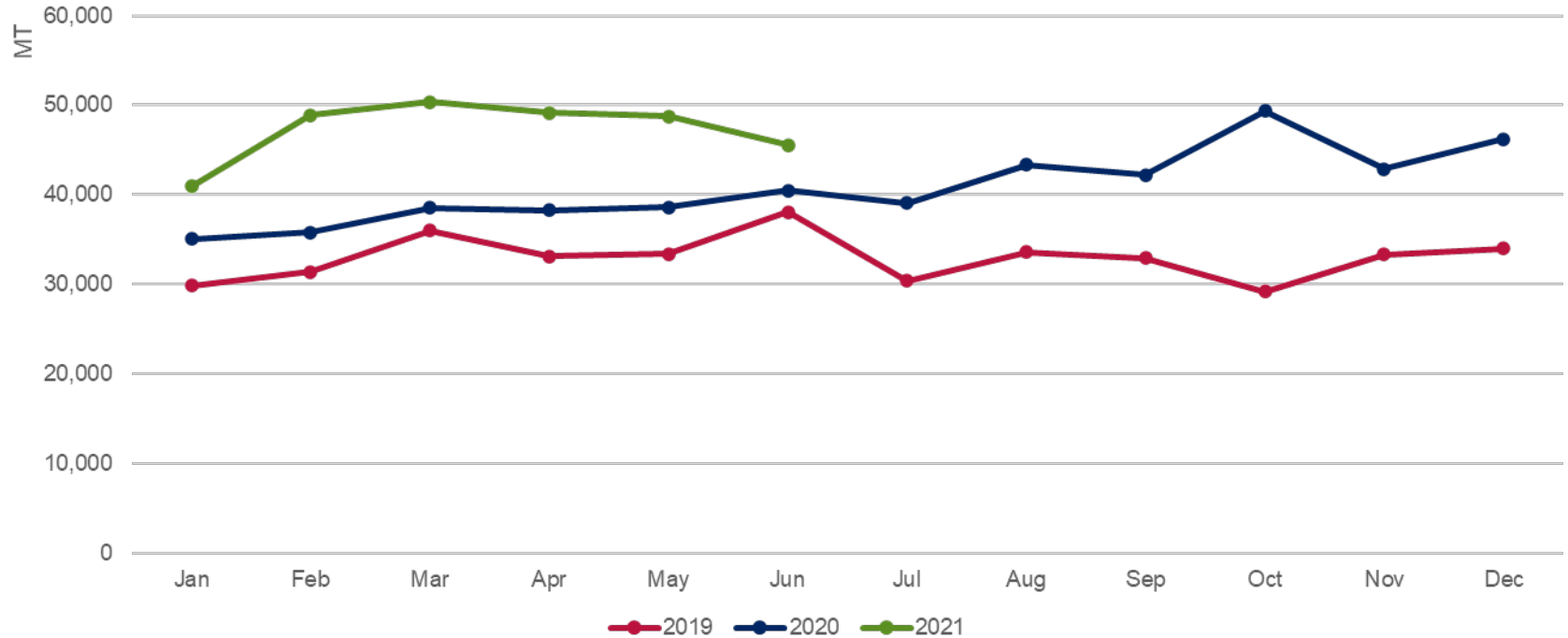


Whey Products (0404.10)



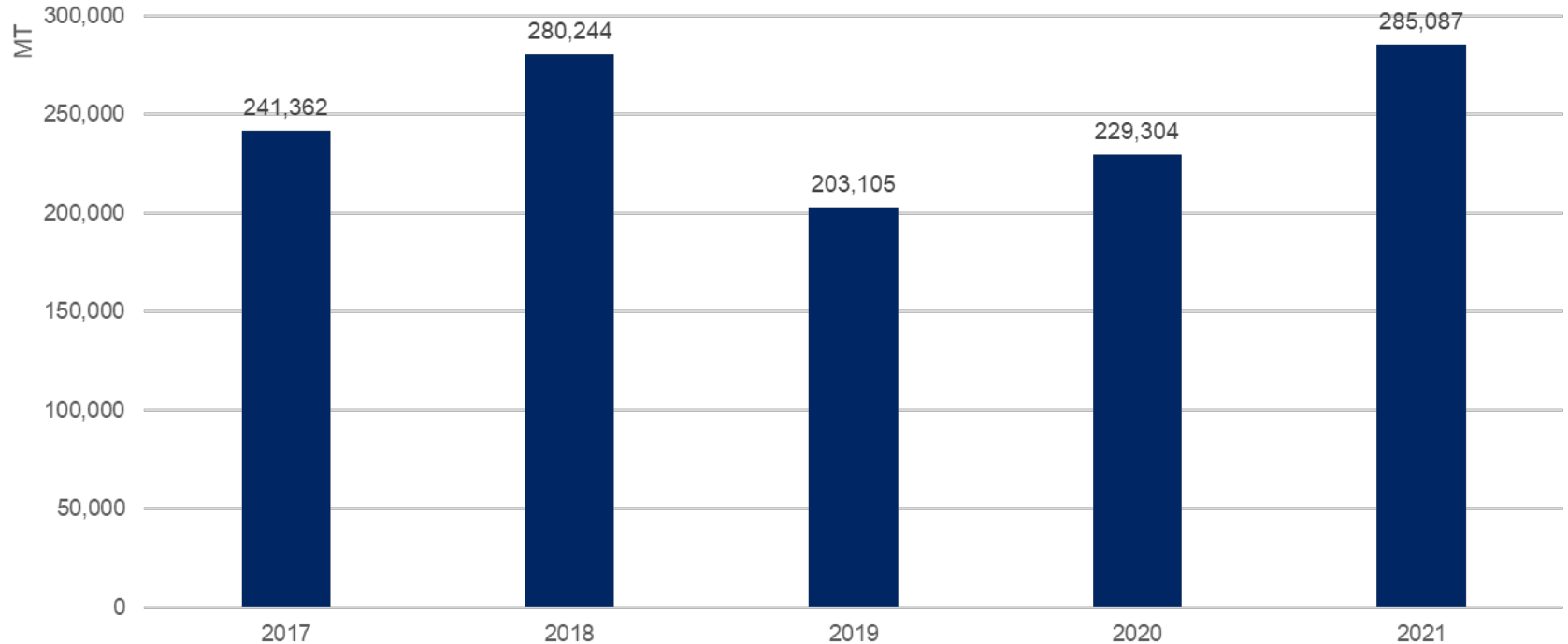
Whey (0404.10) Exports

U.S. Whey (0404.10) Exports: World (30-Day Months)



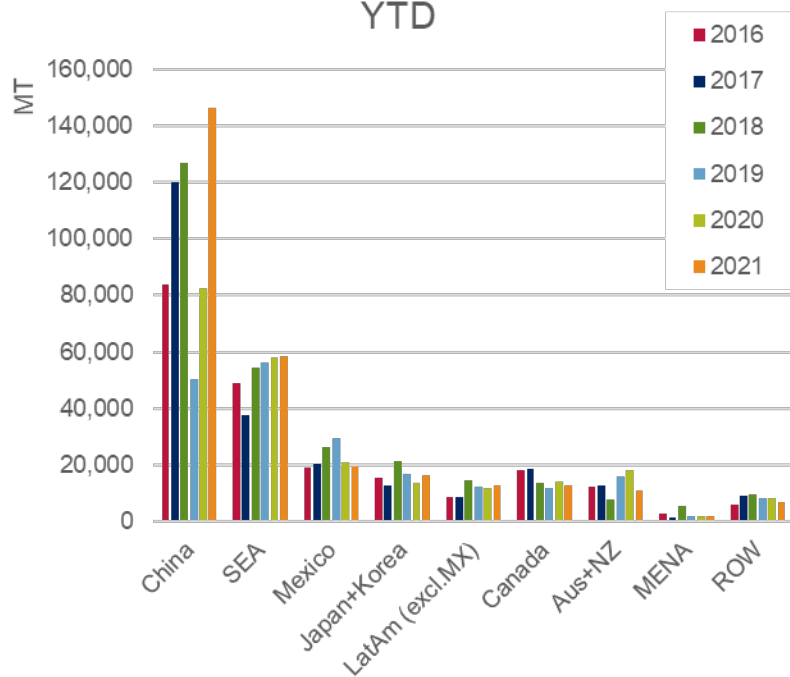
Whey (0404.10) Exports

U.S. Whey (0404.10) Exports: World YTD



Whey (0404.10) Exports

U.S. Whey (0404.10) Exports: World YTD



Whey (0404.10): Year to Date				
		1	2	3
Top Markets	World	China	SEA	Mexico
% of Total Exports		36%	25%	9%
Volume		146,101	58,573	19,351
YOY Change		63,629	768	-1,794
YOY % Change		77%	1%	-8%

Whey (0404.10): Month Of				
		1	2	3
Top Markets	World	China	SEA	Mexico
% of Total Exports		45%	22%	8%
Volume		24,905	8,989	3,716
YOY Change		6,739	8	471
YOY % Change		37%	0%	15%



U.S. Dairy
Export Council

Ingredients | Products | Global Markets

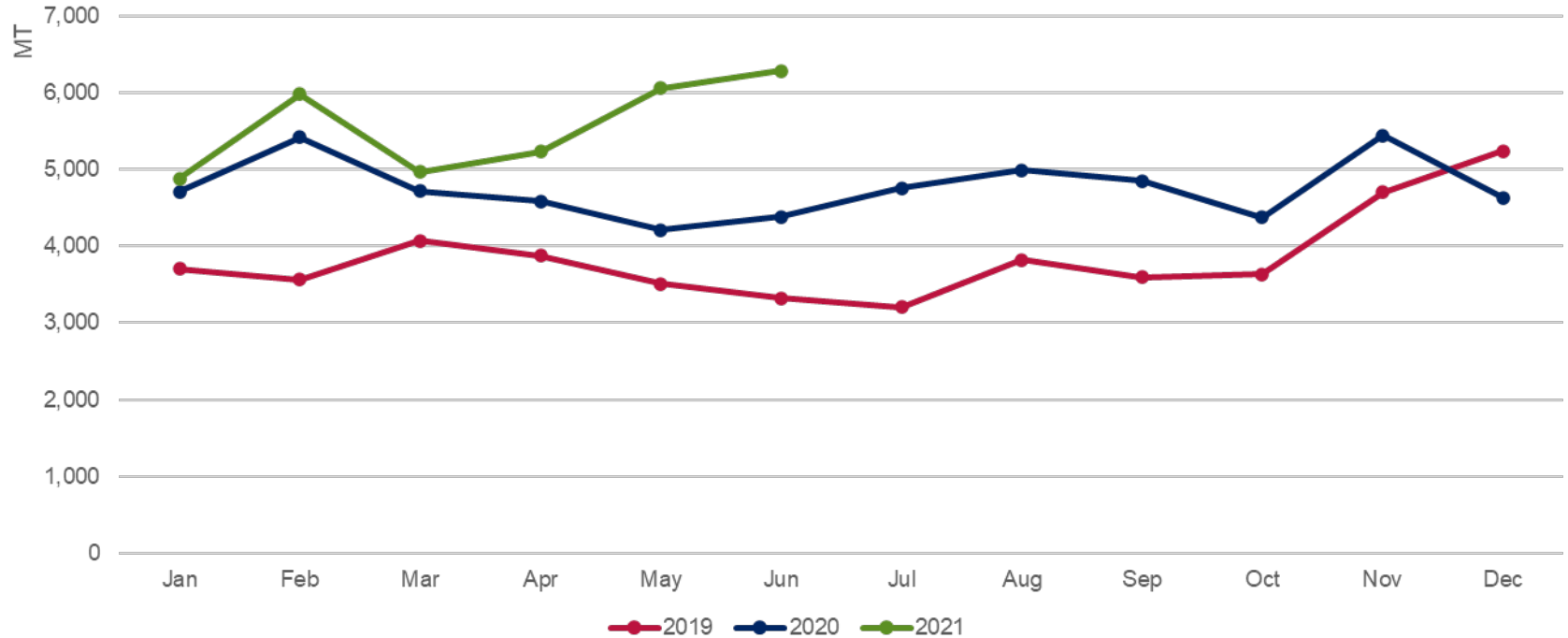


WPC80+



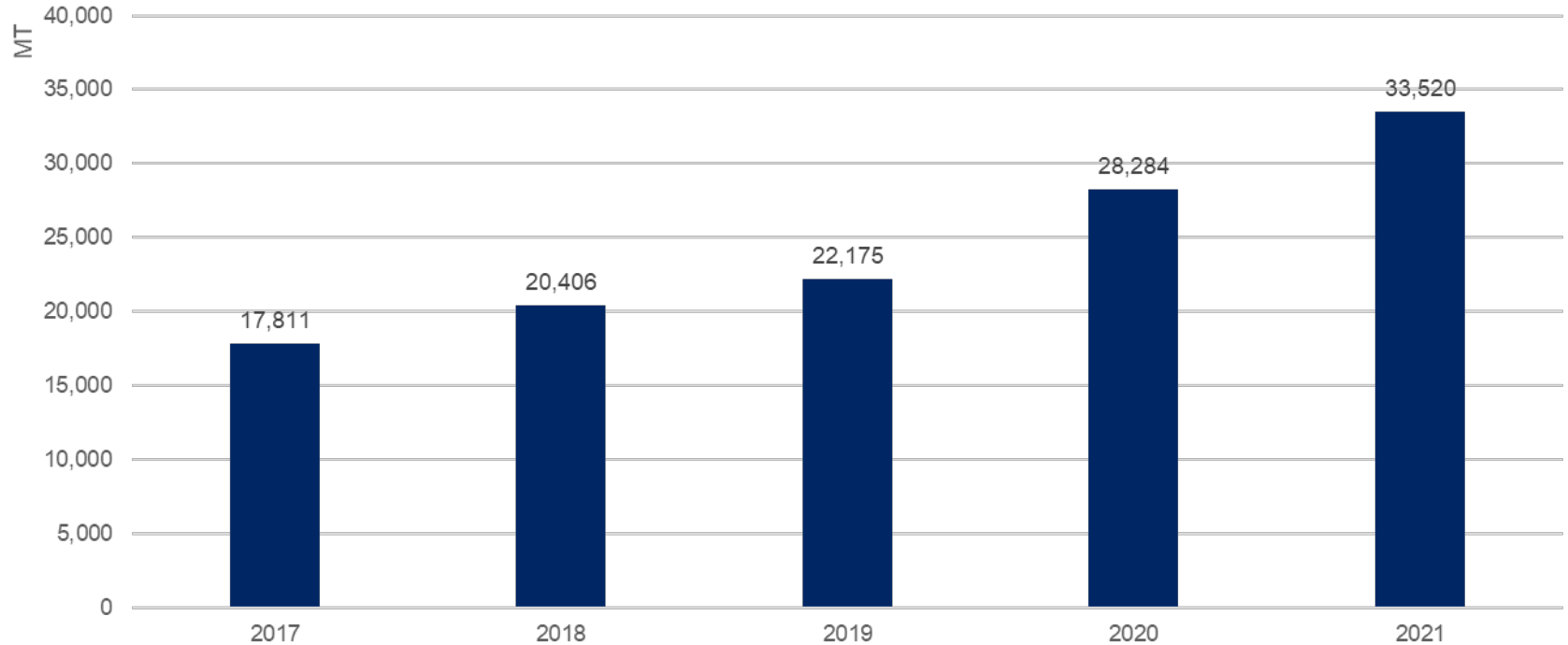
WPC80+ Exports

U.S. WPC80+ Exports: World (30-Day Months)



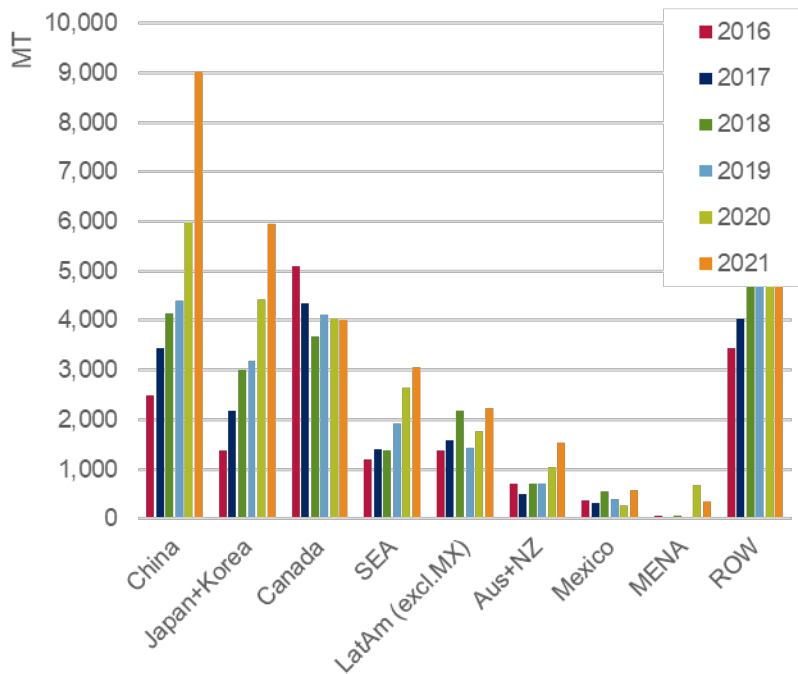
WPC80+ Exports

U.S. WPC80+ Exports: World YTD



WPC80+ Exports

U.S. WPC80+ Exports: World YTD



WPC80+: Year to Date				
		1	2	3
Top Markets	World	China	Japan+Korea	Canada
% of Total Exports		21%	16%	14%
Volume	33,520	9,017	5,937	3,998
YOY Change	5,236	3,042	1,514	-25
YOY % Change	19%	51%	34%	-1%

WPC80+: Month Of				
		1	2	3
Top Markets	World	China	Japan+Korea	Canada
% of Total Exports		26%	19%	7%
Volume	6,281	1,932	1,058	749
YOY Change	1,899	775	221	433
YOY % Change	43%	67%	26%	137%



U.S. Dairy
Export Council

Ingredients | Products | Global Markets

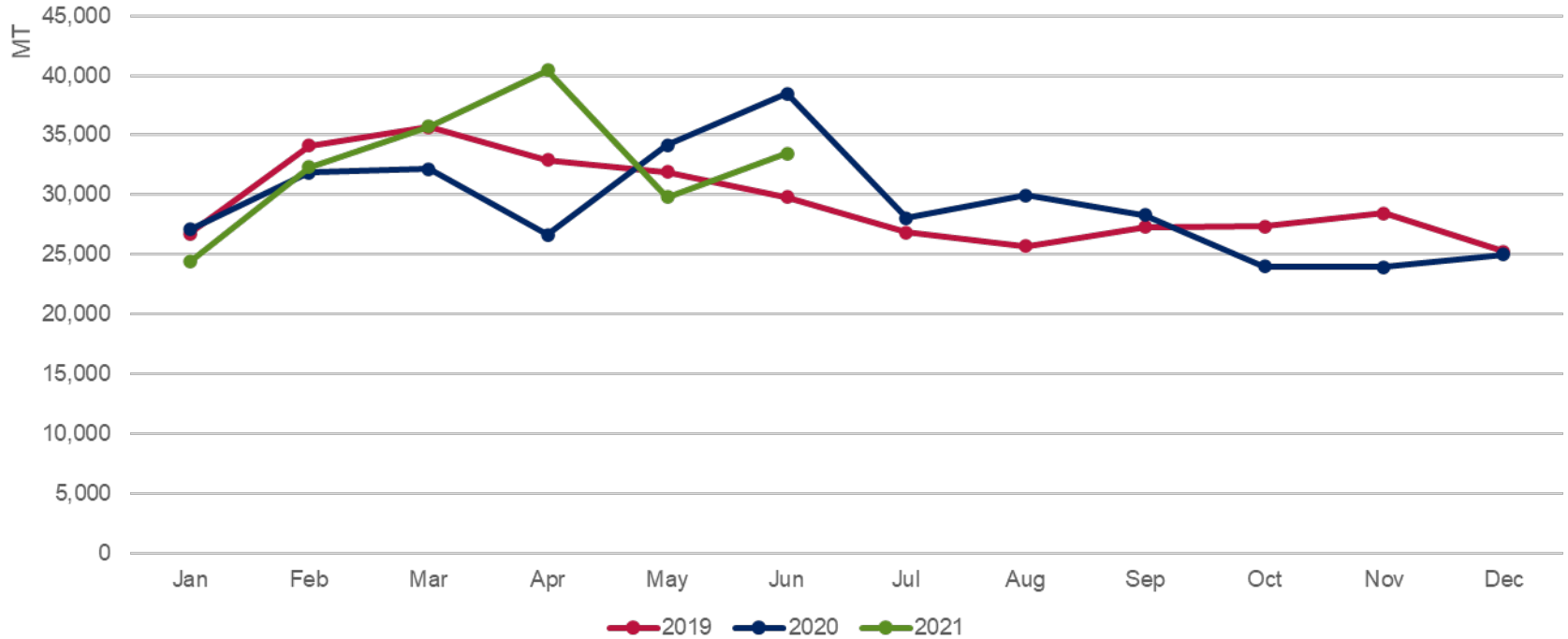


Cheese



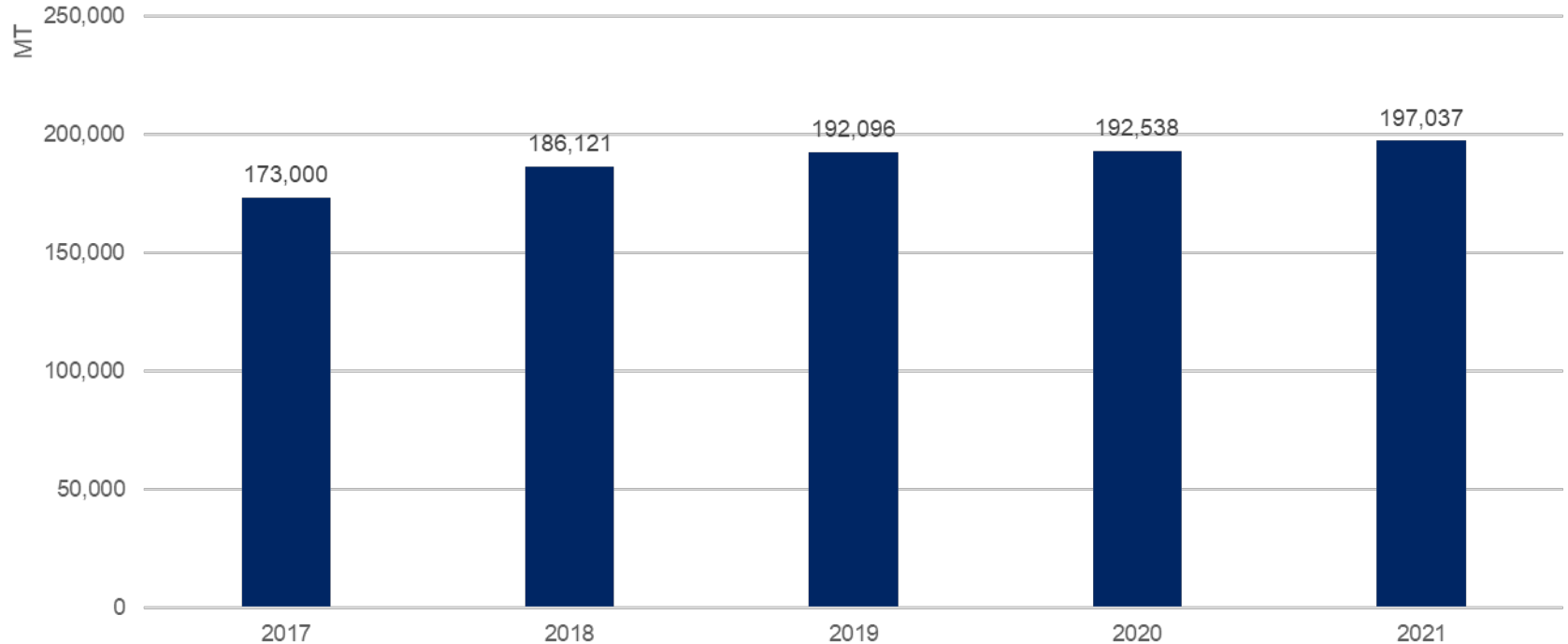
Total Cheese Exports

U.S. Cheese Exports: World (30-Day Months)



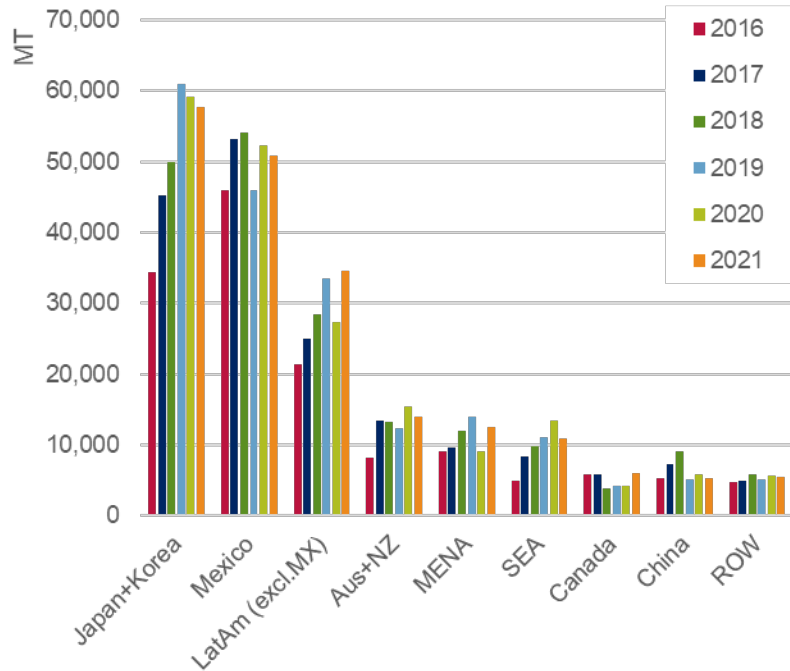
Total Cheese Exports

U.S. Cheese Exports: World YTD



Total Cheese Exports

U.S. Cheese Exports: World YTD



Cheese: Year to Date				
		1	2	3
Top Markets	World	Japan+Korea	Mexico	LatAm (excl.MX)
% of Total Exports		31%	27%	14%
Volume	197,037	57,642	50,930	34,577
YOY Change	4,498	-1,437	-1,434	7,171
YOY % Change	2%	-2%	-3%	26%

Cheese: Month Of				
		1	2	3
Top Markets	World	Mexico	Japan+Korea	LatAm (excl.MX)
% of Total Exports		30%	36%	12%
Volume	33,461	10,399	8,484	6,303
YOY Change	-5,031	-1,313	-5,234	1,690
YOY % Change	-13%	-11%	-38%	37%



U.S. Dairy
Export Council

Ingredients | Products | Global Markets

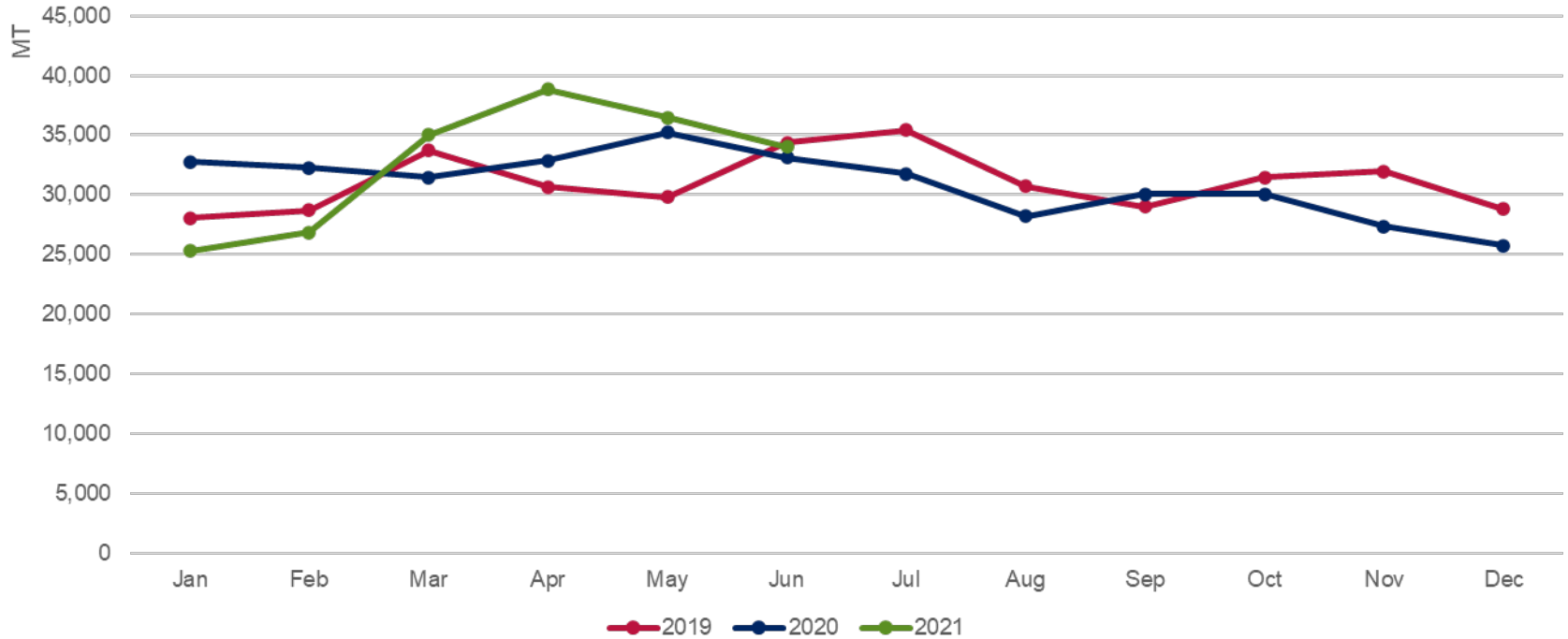


Lactose



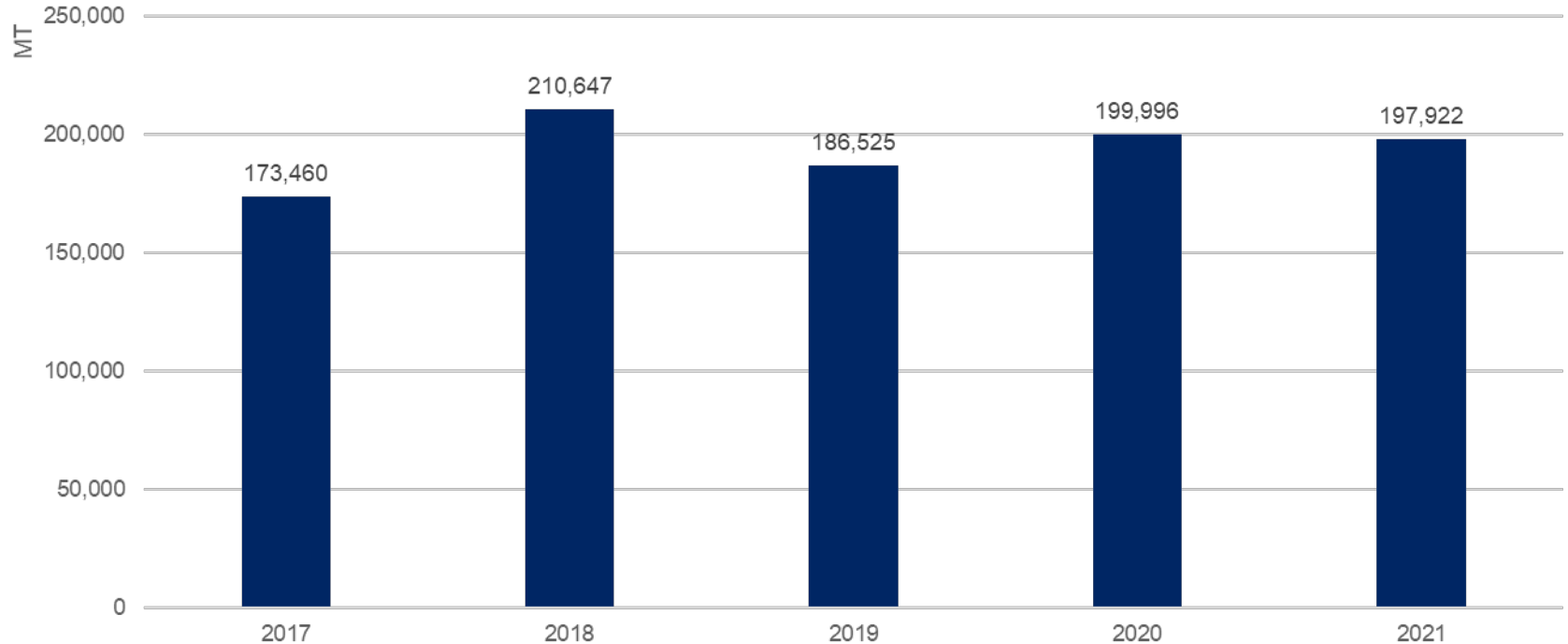
Total Lactose Exports

U.S. Lactose Exports: World (30-Day Months)



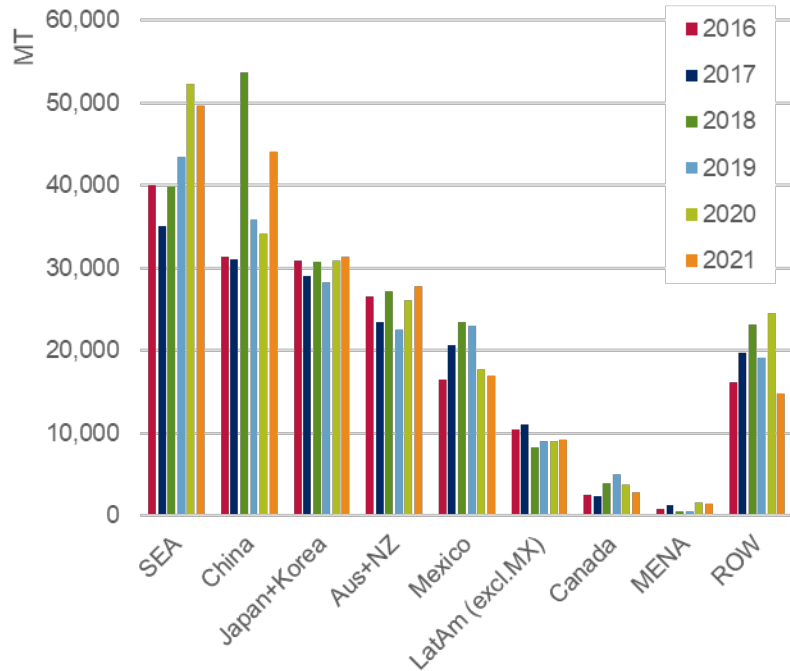
Total Lactose Exports

U.S. Lactose Exports: World YTD



Total Lactose Exports

U.S. Lactose Exports: World YTD



Lactose: Year to Date				
		1	2	3
Top Markets	World	SEA	China	Japan+Korea
% of Total Exports		26%	17%	15%
Volume	197,922	49,661	44,041	31,292
YOY Change	-2,075	-2,550	9,870	351
YOY % Change	-1%	-5%	29%	1%

Lactose: Month Of				
		1	2	3
Top Markets	World	SEA	China	Japan+Korea
% of Total Exports		27%	21%	15%
Volume	34,043	9,414	7,701	4,723
YOY Change	912	321	660	-220
YOY % Change	3%	4%	9%	-4%