



TrainingReady™

# Container Systems



**LION®**  
ready for action

**Damage Control**

# Taking training to the next level.



At LION, we're passionate about redefining firefighter training to make it safer, cleaner, and more effective. We've taken that drive to a new level.

We've utilized our patented technology and decades of experience to create a new line of container-based facilities that give your students the best and most comprehensive training available. Whether your objective calls for a digital fire, live fire, or no fire at all, our containers feature intelligent controls which make training evolutions easy to start, stop and repeat. That way, you decrease your downtime and increase your training time. Our moveable walls and props ensure you can change the layout between evolutions, so your trainees can safely and efficiently master the skill...not the scenario.

Since these containers are modular and expandable, you can add future containers as your training needs grow. And, because these

containers are built to last, you can rest assured these containers can withstand years of abuse. For added peace of mind, we offer a variety of service, maintenance, and training plans to keep your container performing at peak condition.

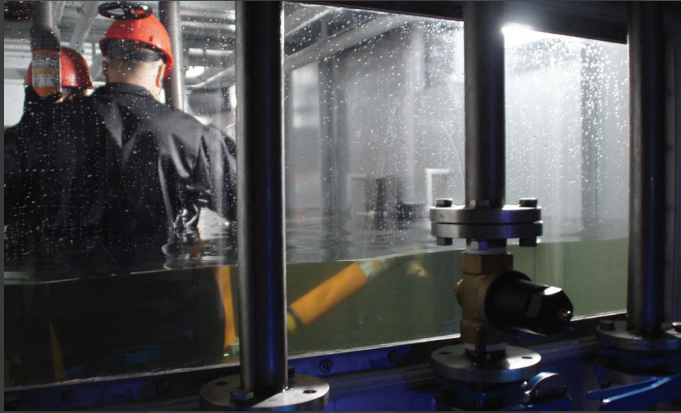
We've built safety into every aspect of our containers. Whether its gas-detection, temperature monitoring or water suppression, our robust, built-in safety system allows you to focus more on the training and less on the risk.

We're committed to helping you learn the skills you need. Trust LION for the best hands-on training solution that meets your unique needs and budget. From planning to construction to speedy delivery, LION's line of turn-key, container-based solutions can make your training objective a reality – and keep your people safe.

(BUSINESS CARD AREA WITH DIE CUTS)

# Damage Control

# Damage Control



**THE DAMAGE CONTROL** system features a training room which fills with over 2,500 gallons of water. Positioned throughout the room are a variety of leaking props which trainees must locate and address. For added realism we've integrated stress enhancing elements such as strobe lights and sound effects. The instructor can monitor every move and give live feedback from the safety of the control room. In case of an emergency the water can be evacuated in only 30 seconds.

## SAFETY SYSTEM

The trainers are equipped with state-of-the-art safety, emergency and control systems with interlock and redundant features, for the highest level of safety and performance.

(DIE CUT AREA)



Emergency Buttons



Safety Evacuation Lights

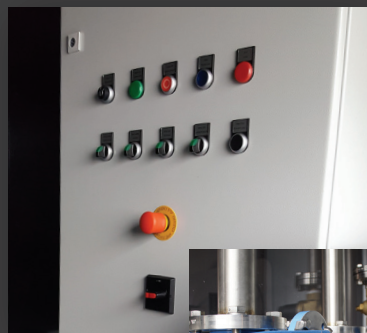


Overflow Protection



Quick Water Evacuation

Control Panel



## CONTROL SYSTEM

The trainer features **LION's Essential Control System**.

A **Control Panel** mounted in the control room has general start, stop and reset buttons.

**Quarter Turn Valves** located in the control room can also be used to control the flow of water to the individual props.



Quarter Turn Valves

(DIAGONAL CUT AWAY AREA)



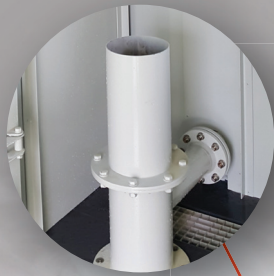


*LION's TrainingReady™ Damage Control ensures your team is prepared and ready to respond to a damaged marine vessel emergency. This Damage Control trainer is equipped with several leaking props for intense and realistic yet completely safe training sessions. Trainees will learn to assess the danger of the situation, to locate sources, and to act accordingly.*

#### **TRAINING OPPORTUNITIES**

- Punctured Hull
- Pipe Leak
- Breached Door
- Dual Flange Leak
- Seam Split (Bow Box Leak)
- Small Holes (Stern Box Leak)
- Center Line Flange
- Port Flange
- Stress Training

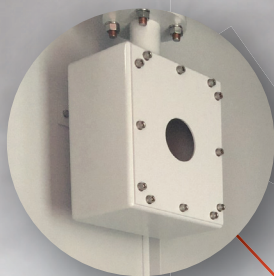




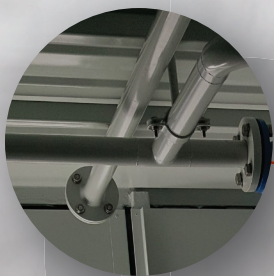
**10" OVERFLOW**



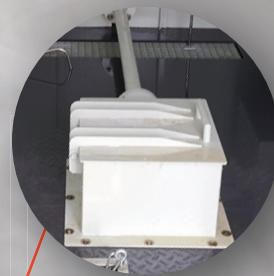
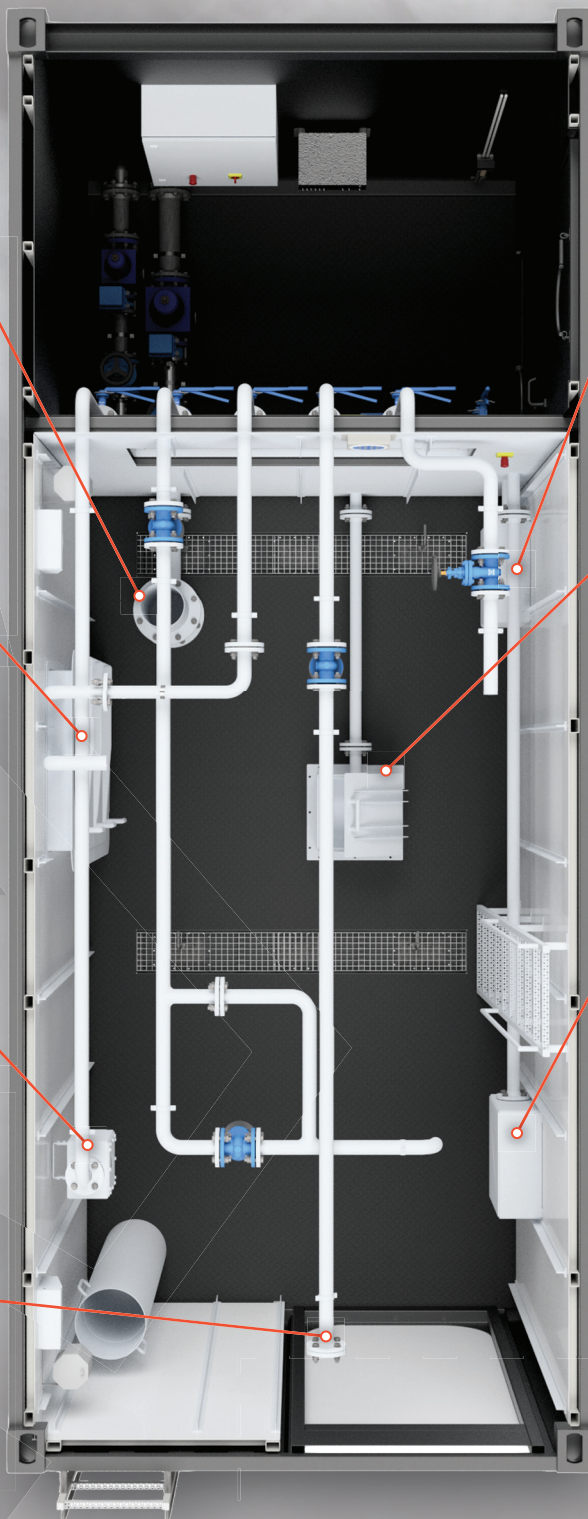
**BREACHED DOOR**



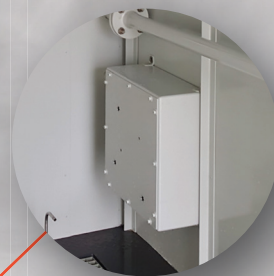
**ROUND PUNCTURE**



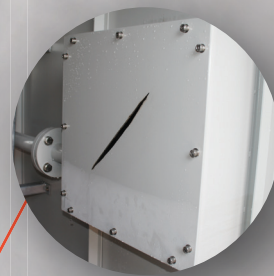
**FLANGE WELD SPLIT**



**FAILED HATCHWAY**



**JAGGED PLATE TEAR**



**WELD SPLIT**

## Key Container Features

### DAMAGE CONTROL PROPS

The training room features a variety of damage control props to simulate a multitude of maritime emergencies. The props are located at three levels: 36-40" (waist), 55-60" (shoulder), and 75-80" (overhead). The staggered height of the props not only adds variability to the training but also increases the difficulty. Props Include: Weld Split, Seam Split, Flange Weld Split, Loose Flange, Jagged Plate Tear, Round Puncture, Breached Door, and Failed Hatchway.



**LION**<sup>®</sup>  
ready for action

TrainingReady™

# Damage Control

## TECHNICAL SPECIFICATIONS

- **20 ft ISO Freight Container**
  - Exterior Dimensions (20' x 8' x 8')
  - Interior Training Room Dimensions (15' x 8')
- **LION Essential Control System**
- **LION Safety System**
- **Damage Control Props**
  - Weld Split
  - Seam Split
  - Flange Weld Split
  - Loose Flange
  - Jagged Plate Tear
  - Pipe Leak
  - Round Puncture
  - Breached Door
  - Failed Hatchway

## SITE REQUIREMENTS

### Fixed Site

Site Prep: Hard surface, preferably concrete or asphalt to reduce erosion.

Space Required: Minimum 15' x 30'

Gas: Not Required

Electrical: 120V Single Phase

Water: Hydrant Access

### Mobile Site

Site Prep: Hard surface, preferably concrete or asphalt to reduce erosion.

Space Required: Minimum 15' x 30'

Gas: Not Required

Electrical: 120V Single Phase

Water: Hydrant Access

## SERVICE PLAN

To ensure long-term reliability and optimal performance of your training structure we highly recommend protecting your investment with a LION Service Plan.

In addition to maintenance, NFPA 1402 also recommends annual re-training of the primary operators of the facility.

The LION service team offers a variety of maintenance and training options to support safe, reliable training for the life of the facility.

### Service Plan Benefits:

- Annual Onsite Service
- Re-Training of Primary Operators
- After-Hours Support

## LEARN MORE

To learn more about how LION's TrainingReady™

Damage Control can help take your fire training program to the next level, contact your LION Fire Training representative and visit

<https://www.lionprotects.com/trainingready-container-systems>



[lionprotects.com/fire-training-containers](https://www.lionprotects.com/fire-training-containers)

1.888.428.5539