

# SAP System of Record Integration

## PROCESS EXCELLENCE IN AN SAP ENVIRONMENT

The iGrafx capabilities for SAP System of Record Integration help you get the best business value out of your SAP implementation by ensuring business alignment, continuity and governance around your SAP defined processes. By integrating the SAP Process landscape from SAP Solution Manager into a model of your end-to-end business operations, iGrafx provides a platform for enhanced business-to-IT communication and effective change management and impact analysis.

Key Feature	Benefit
Bi-directional integration with SAP Solution Manager	Synchronized with SAP Solution Manager to maintain up-to-date project documentation available to IT and business stakeholders, as well as process participants
SAP process alignment with the enterprise process landscape	Identify where business processes are supported by SAP automation.
SAP process modeling	Visually create context for where and how SAP processes and transactions are used within the business. View process maps from SAP Solution Manager.
Requirement documentation for SAP projects	Provide those responsible for SAP implementation with visibility to business requirements in SAP Solution Manager, bridging the gap between business and IT.
IT Architecture Modeling	Describe how IT systems support processes to assess change impact.

iGrafx SAP System of Record Integration is ideal for:

- SAP Implementation Teams
- SAP Consultants
- Process Owners
- Business Analysts
- Process Analysts
- Enterprise Architects

Meet your objectives in:

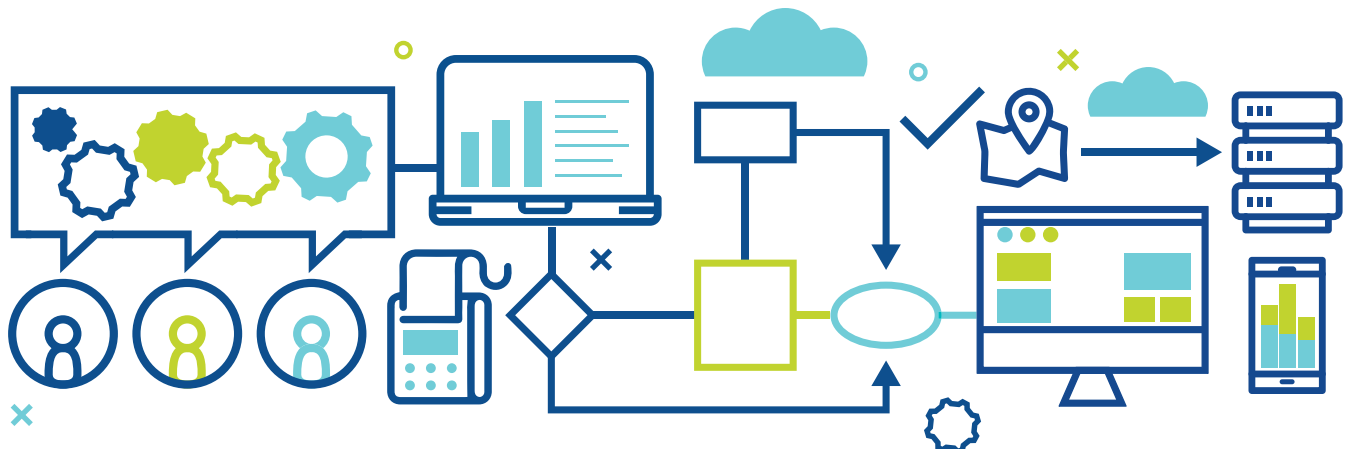
- SAP Implementations and upgrades
- Process Analysis
- Business Process Improvement
- Total Quality Management
- Business Continuity & Resiliency
- Governance Risk & Compliance

Easily create:

- Process Hierarchies
- Technology Relationships
- Organizational Relationships
- Requirements, Risks & Controls

Start your free trial today!

Simply e-mail or call, we'll do the rest  
 Tel: +1(503) 404-6050  
 Mail: info@igrafx.com



# SAP System of Record Integration

iGrafX®

## See the Whole Picture

iGrafX SAP System of Record Integration enables stakeholders to get a full view of the process landscape from the process steps implemented in SAP to their organization's comprehensive operational processes. iGrafX maps SAP supporting processes to a larger business view that includes enterprise processes, requirements and goals. This helps organizations understand how and where SAP implementations and ensuing upgrades can be achieved, and which areas of the business, as well as specific resources, are impacted.

iGrafX presents information in terminology appropriate for the SAP environment facilitating two-way communication of functional and operational requirements between business and IT. Projects modified in the SAP Solution Manager and synchronized, maintaining up-to-date process documentation across the organization.

iGrafX combines comprehensive process modeling with intuitive "what-if" analysis to satisfy the needs of process analysts while facilitating integration of SAP implementation and business requirements.

These and other features have redefined business process modeling for SAP organizations and established a new benchmark in usability.

## Accelerating Process Excellence Across the Enterprise

iGrafX capabilities for SAP System of Record Integration are part of the iGrafX Platform for an enterprise-wide approach to process excellence. Integrating the SAP landscape with business architecture modeling capabilities and advanced process modeling and analysis, the iGrafX solution bridges the gap between the major organization constituencies—IT, process initiatives and business analysts—to ensure a level of process consistency, management, history and control across the enterprise.



## Looking for a Jump Start with iGrafX?

Leverage our expertise for a higher ROI. Our training and consulting services can help you apply the power of iGrafX even faster. For more information, please visit [iGrafX.com/services](http://iGrafX.com/services).

iGrafX works with the Global 2000 with a focus on large, complex challenges, high degree of regulatory requirements, and the need for continuous business improvement.

## iGrafX

iGrafX, LLC  
7585 SW Mohawk St.  
Tualatin, OR 97062  
United States

Phone: +1 (503) 404-6050  
[info@igrafx.com](mailto:info@igrafx.com)  
[www.iGrafX.com](http://www.iGrafX.com)

## iGrafX EMEA

iGrafX GmbH  
Dr.-Johann-Heitzer-Str. 2  
85757 Karlsfeld - Munich  
Germany

Tel: +49.8131.3175.0  
[info.de@igrafx.com](mailto:info.de@igrafx.com)  
[www.iGrafX.de](http://www.iGrafX.de)