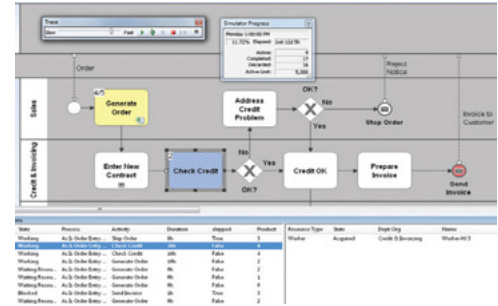


## SIMULATE YOUR WORLD AND FIND EFFICIENCIES

iGrafX® Process™ is the most full-featured, easy to use process analysis and simulation tool available to help organisations understand and improve their processes. iGrafX Process provides all of the functionality in iGrafX® FlowCharter® plus discrete event simulation analytics, and reporting, enabling dynamic “what-if” process analysis.



Key Feature	Benefit
Intelligent Swimlane® Diagrams	Minimise time to create and edit process maps, and communicate cross-department process dependencies.
Visual Trace	Visualise and inspect simulations to enhance understanding and validate models.
Extended Value Stream Maps	Save time editing and updating your VSMs and create a lean view that crosses plant, divisional, and company boundaries.
Simulate BPMN Diagrams	Perform process simulation using this popular process mapping standard.
Simulate Empirical Data	Improve result accuracy by simulating process data maintained externally from the model.
Multiple Scenario Analysis	Identify optimal changes through comprehensive “what-if” analysis.
Custom Distribution	Easily create distributions to model reality.
SOA Modeling	Use messages to simulate process communication within a service-oriented architecture.
Create Reports from Simulation Data	View simulation results through tabular and graphical reports that show side-by-side comparison of individual and aggregated statistics.
PDF Publishing	Share your process models as PDF documents as well as HTML and Microsoft® Office documents.
Visio® Import	Reduce development time by leveraging legacy content.

iGrafX Process is ideal for:

- Process Owners
- Business Analysts
- Process Analysts
- Quality Specialists
- Project Managers

Meet your objectives in:

- Process Analysis
- Business Process Improvement
- Total Quality Management

Easily create:

- Flowcharts
- Process Maps
- BPMN Diagrams
- Swimlane® Diagrams
- Value Stream Maps
- Cause & Effect Diagrams
- FMEA Spreadsheets
- Pick Charts
- SIPOC Diagrams
- Customised Templates

Plus:

- Resource Modeling
- Discrete Event Simulation
- “What-If” Analysis
- Tabular & Graphical Reports

Start your free trial today!

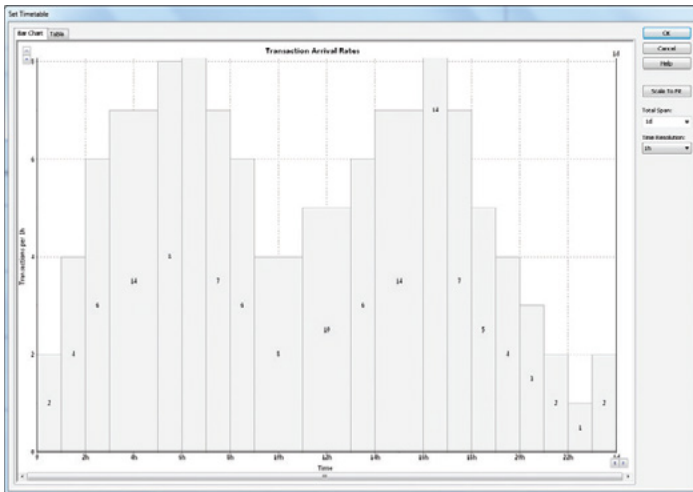
Simply e-mail or call, we'll do the rest  
 Tel: +1(503) 404-6050  
 Mail: info@igrafx.com

## Competitive Advantage Through Process Excellence

iGrafX Process enables even the most complex processes to be understood, modelled and improved. As a cornerstone of process improvement for more than a decade, iGrafX Process has helped thousands of organisations document, simulate and improve business, operational, and IT processes, thereby increasing customer satisfaction and product quality while lowering costs.

Unlike other modelling techniques such as spreadsheets which do not allow for the modelling of feedback loops, rework paths, or parallel processes, iGrafX process models are more intuitive and can be instantly updated in response to changing schedules, resource availability, customer demand or random events such as machine down time. Once data is captured and modelled, powerful reports help you communicate your findings. iGrafX Process combines world class process modeling with intuitive “what-if” analysis to satisfy even the most demanding process analyst.

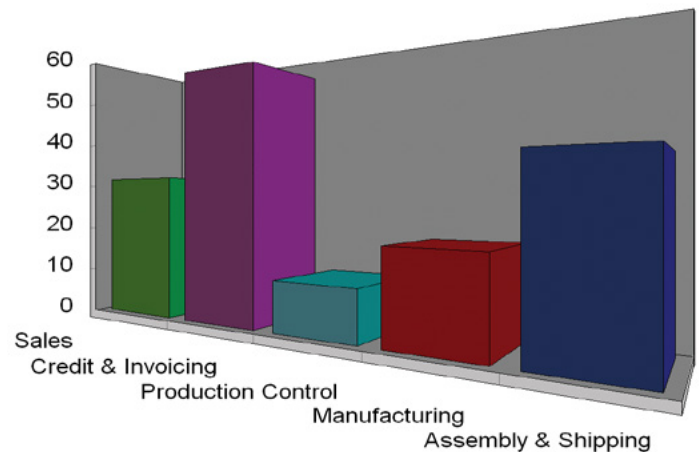
iGrafX Process helps organise activities into their respective departments and highlights the hand-offs between them while capturing both the process diagram and the process data in an integrated environment. These and other features have redefined business process modelling and simulation and established a new benchmark in usability.



## A Pillar of Process Excellence

iGrafX Process is a powerful standalone tool for process modelling and simulation, but excels when used as an integral component of the iGrafX platform for an enterprise wide approach to process excellence. When coupled with the iGrafX central repository for collaborative modeling and communication, iGrafX Process will help you bridge the gap between the major organisation constituencies—IT, process practitioners and business analysts—to ensure a level of process consistency, management, history and control across the enterprise.

### Resource Utilization



## Looking for a Jump Start with iGrafX?

Leverage our expertise for a higher ROI. Our training and consulting services can help you apply the power of iGrafX even faster. For more information, please visit [iGrafX.com/services](http://iGrafX.com/services).

iGrafX works with the Global 2000 with a focus on large, complex challenges, high degree of regulatory requirements, and the need for continuous business improvement.

## iGrafX

iGrafX, LLC  
7585 SW Mohawk St.  
Tualatin, OR 97062  
United States

Phone: +1 (503) 404-6050  
[info@igrafx.com](mailto:info@igrafx.com)  
[www.iigrafx.com](http://www.iigrafx.com)

## iGrafX EMEA

iGrafX GmbH  
Dr.-Johann-Heitzer-Str. 2  
85757 Karlsfeld - Munich  
Germany

Tel: +49.8131.3175.0  
[info.de@igrafx.com](mailto:info.de@igrafx.com)  
[www.iigrafx.de](http://www.iigrafx.de)