



RYMAN HEALTHCARE  
Deborah Cheetham Retirement Village

VILLA 21

STAGE 2  
GROUND FLOOR

- 3 BED   
 2 BATH   
 LAUNDRY

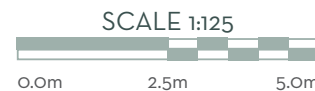
INTERIOR	114.47M <sup>2</sup>
GARAGE	24.03M <sup>2</sup>
TOTAL	138.50M <sup>2</sup>

UNIT SPECIFICATIONS

KITCHEN	LAYOUT 17A
BATHROOM	LAYOUT 7
ENSUITE	LAYOUT 7A
MASTER WR	2X MARS
BEDROOM 2 WR	PLUTO
BEDROOM 3 WR	MARS
ELECTRICAL TYPE	LAYOUT 4A
LAUNDRY TYPE	LAYOUT 1



Footpath 2.7m away  
Road 4.8m away  
See plan 109-002\_SA1-100



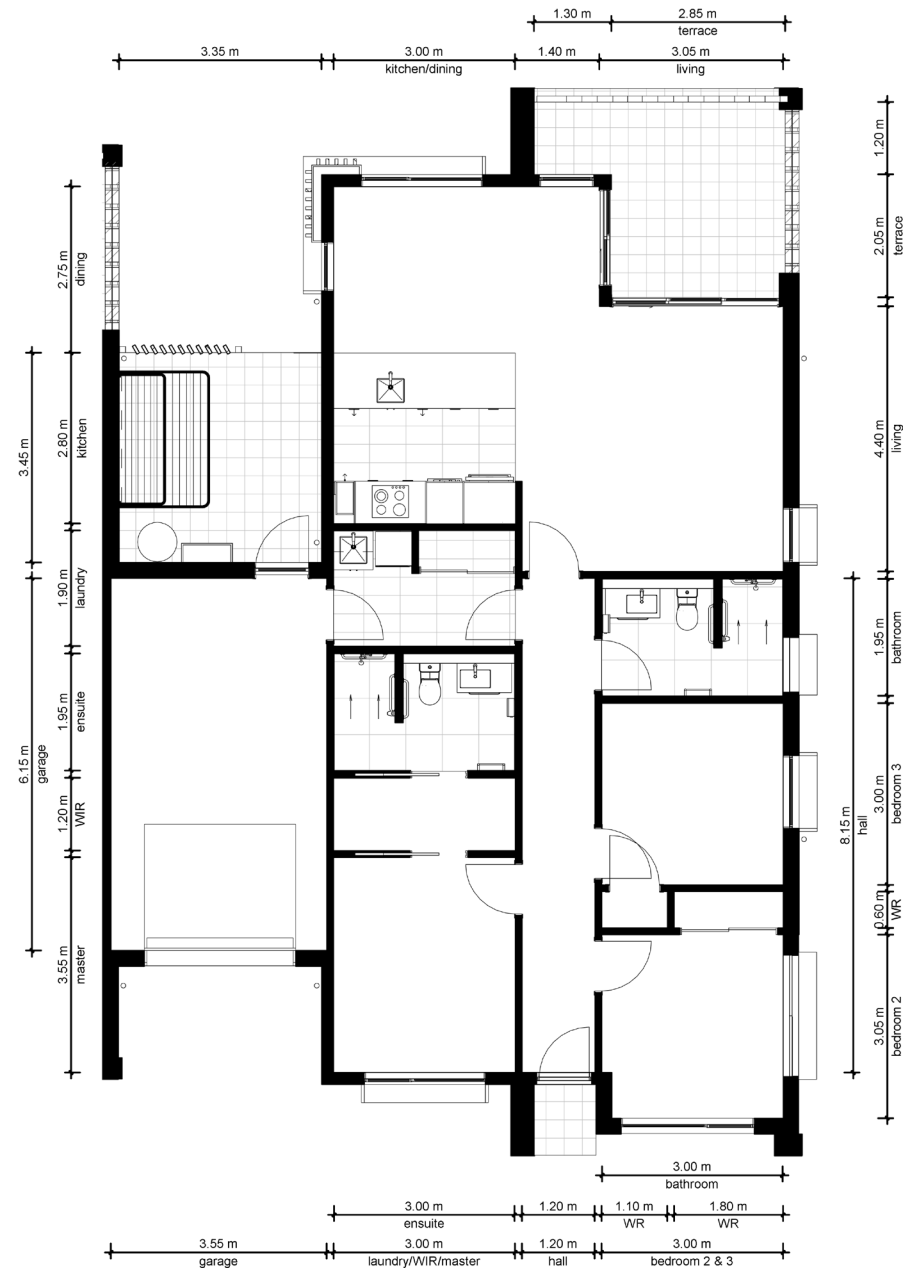
Carpark 0.9m away  
Communal breakout area 2.02m away  
Stage 3 10.1m away  
See plan 109-002\_SA1-100

**LANDSCAPING KEY**  
Indicative landscaping shown  
Final landscaping to be confirmed

- Proposed Detailed Garden Beds
- Proposed Garden Beds
- Proposed Grassed Areas

## UNIT SPECIFICATIONS

- Fixed floor coverings (tiles and carpet)
- Light fittings
- Drapes
- Double glazed windows
- Telephone points (in living and all bedrooms)
- Split system, heating and cooling in living room & master & heater in bathroom(s)
- Corian benchtop and glass splashback
- Cook top, oven and rangehood (Fisher & Paykel - Stainless steel finish)
- Single draw dishwasher (Fisher & Paykel - Stainless steel finish)
- Bathroom vanity and mirrored cabinet
- Heated towel rail
- Under tile heating in bathroom(s)
- Laundry tub
- Smoke detectors
- Emergency call alarm system in master bedroom and bathroom(s)
- TV (and FOXTEL) compatible aerial point(s) in lounge and bedrooms
- Tiled terraces
- Garage door opener (with two remotes)
- Fly screens to all opening windows/glass sliding doors
- Aluminium diamond grille security doors with aluminium mesh with the front door and rear sliding doors



\*All drawings and dimensions are approximate and may vary slightly due to construction tolerances

\*Dimension plan not to scale