



WHEN EXCLUSIVITY MEANS BEING DIFFERENT

Tamarit Motorcycles is a motorcycle custom build company with 100% Spanish DNA that in less than two years, has become in the biggest builder of this famous bikes worldwide.

Established in Elche 2015, Tamarit has a pretty clear identity trademark: each motorcycle is a different project and has a different story to tell about his owner, who sees his own personality coating the bike even considering the most tiny detail. Craftmanship and technology serving the most sybarite clients in the world.

Tamarit's path begins when one of the owners – Quique, designer and manufacturer of leather shoes- is offered to create leather pieces to customise a bike. After quite a success, a ton of customisation requests would follow. Such amount of work and tasks stockpiled that he decided to go profesional and starting carving what we know today as Tamarit. It was during this time that along Matías –the other soon-to-be owner-, Quique set course to the first big Project, a Triumph makeover from scratch.

The power of customise a motorcycle until the point you can give a soul to it became a great business opportunity that was getting bigger and bigger over the months, and so the dreams of the owners as well. Tamarit workshop located in Elche was the stage for a play where little by little more and more professionals and manufactures were given a role to play regarding different areas of the industry in order to provide a full service involving all aspects of the motorcycle build art.

“WELCOME TO THE TAMARIT FAMILY”

This is the catch phrase that appears on the email that is received after website registration is completed. From this moment on, an enormous set of options arise during the following interviews that the firm has with the future owner of the motorcycle.

His dreams, hopes, hobbies and even his most nostalgic memories are to be somehow reflected on his new “hog”. All of this is depicted on a handmade high quality drawing, where the final design is confirmed just as if we had a haute couture order. Then, the owner bids farewell to his old lady, until the release day of his new Tamarit bike, which is also nicknamed and numbered by the owner himself during an event where friends, motor culture lovers and relatives, gather around the veiled creation in order to celebrate a new entry to the Tamarit clan.

DARE TO BE DIFFERENT

Tamarit corporate philosophy prioritizes exclusivity and distinction. Daring to be different is the slogan that headlines any design of the ongoing projects, doesn't matter if relates to a single bolt-on part or to a full custom motorcycle build. For Tamarit, the size of the project does not matter at all, but the effect that may cause the final result stands out by itself, always taking into account that even the most tiny detail or part can be customised.

Tamarit emerges from the finest craftmanship in order to offer his clients a bike built-to-measure, an state of the art design and a lifestyle given to those who dare to do what anyone does and ride a bike which will be famous and being talked about their story and personality. A client from Tamarit would never want to get recognition for what everyone could get, a client from Tamarit searches for this exclusivity by being different from the rest. A motto that has got many luxury and motorcycle lovers fallen for around the world.

Lucky people with lovely burras

Tamarit Motorcycles

TRIUMPH BIKES EXPERTS

SPECIALIZATION

We are the biggest Triumph custom builder in the world. Thanks to the focused specialization on modern classic engines from the British brand, we perfectly control all the production and sale process.

Nowadays, we own a custom accesories range for each bike model, backed up by expert engineers and mechanics, and following demanding quality standards.

PRODUCTION CAPABILITY

PRODUCTION CAPABILITY AND AGREEMENTS

In 2019, Tamarit Motorcycles business growth was affected by the inability of fulfilling the users demand, who overwhelmed the production capacity during the first six months, period when the demand for bikes and accesories is at the highest surge of the season.

Tamarit has reached several agreements with sector giants, cornerstone products such as fiberglass, all with a view to be able to cover the demand that subdues our workshop production capacity. As a result, Tamarit has extended five times is production capacity.

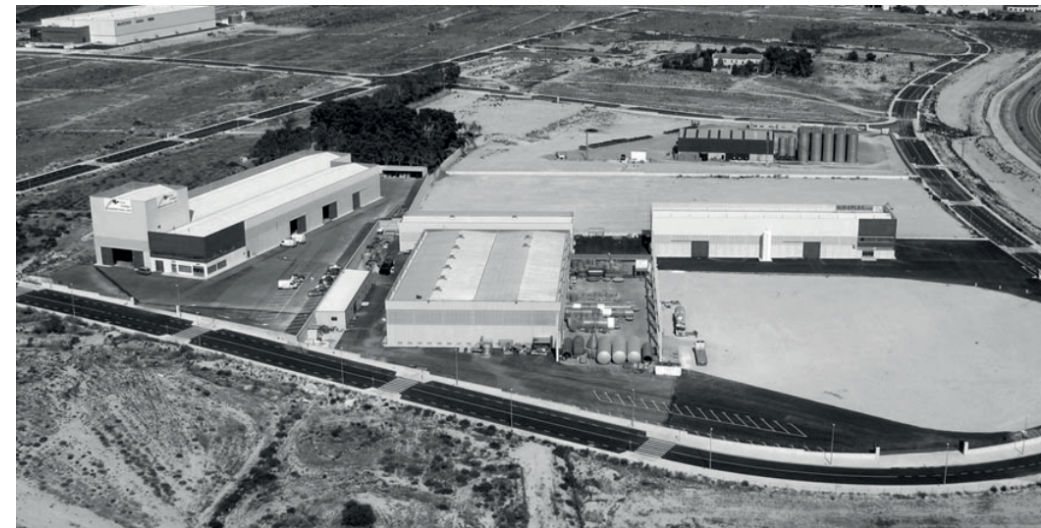
SAFETY AND ERGONOMICS:

TWO INALIENABLE PRINCIPLES

We currently work hand in hand with an expert materials engineer, who is in charge of selecting the components that make up all our parts. This ensures not only that finishes look impressive, but that maximize user comfort while driving.

If comfort on the motorcycle is essential, safety is even more so from the moment the engine is started.

In our workshops we have the chassis of all Triumph motorcycle models with which we work, which gives us allows to carry out extreme quality controls.



04	BONNEVILLE T100 AND T120
30	THRUXTON 1200 AND 1200R
58	STREET TWIN AND STREET SCRAMBLER
82	SCRAMBLER 1200 AND 1200XE
98	SPEED TWIN
122	BOBBER
136	ALL TAMARIT PARTS

BONNEVILLE T100 AND BONNEVILLE T120

PARTS

**THE REINVENTION OF THE
CLASSIC ICON WITH 100%
SPANISH DNA.**









SEATS **JEREZ**

Ref: TMRT39

ITEM DESCRIPTION

COMPATIBLE WITH: Bonneville T100, Bonneville T120, Street Twin, Street Cup.
MATERIALS: Fiberglass, polyurethane and nautic fabric.

COLOR



UNPAINTED



JET BLACK



KOROSI RED



MATT IRONSTONE

UPHOLSTERY



BLACK



BROWN







SEATS

SILVERSTONE

Ref: TMRT431

ITEM DESCRIPTION

COMPATIBLE WITH: Bonneville T100, Bonneville T120, Street Twin, Street Scrambler, Street Cup.

MATERIALS: Fiberglass, polyurethane and nautic fabric.

UPHOLSTERY



BLACK



BROWN



BURDEOS



CAMEL



SEATS

BIZARRA

Ref: TMRT426

ITEM DESCRIPTION

COMPATIBLE WITH: Bonneville T100, Bonneville T120, Street Twin, Street Scrambler, Street Cup.

MATERIALS: Fiberglass, polyurethane and nautic fabric.

COLOR



BLACK



ALUMINIUM SILVER

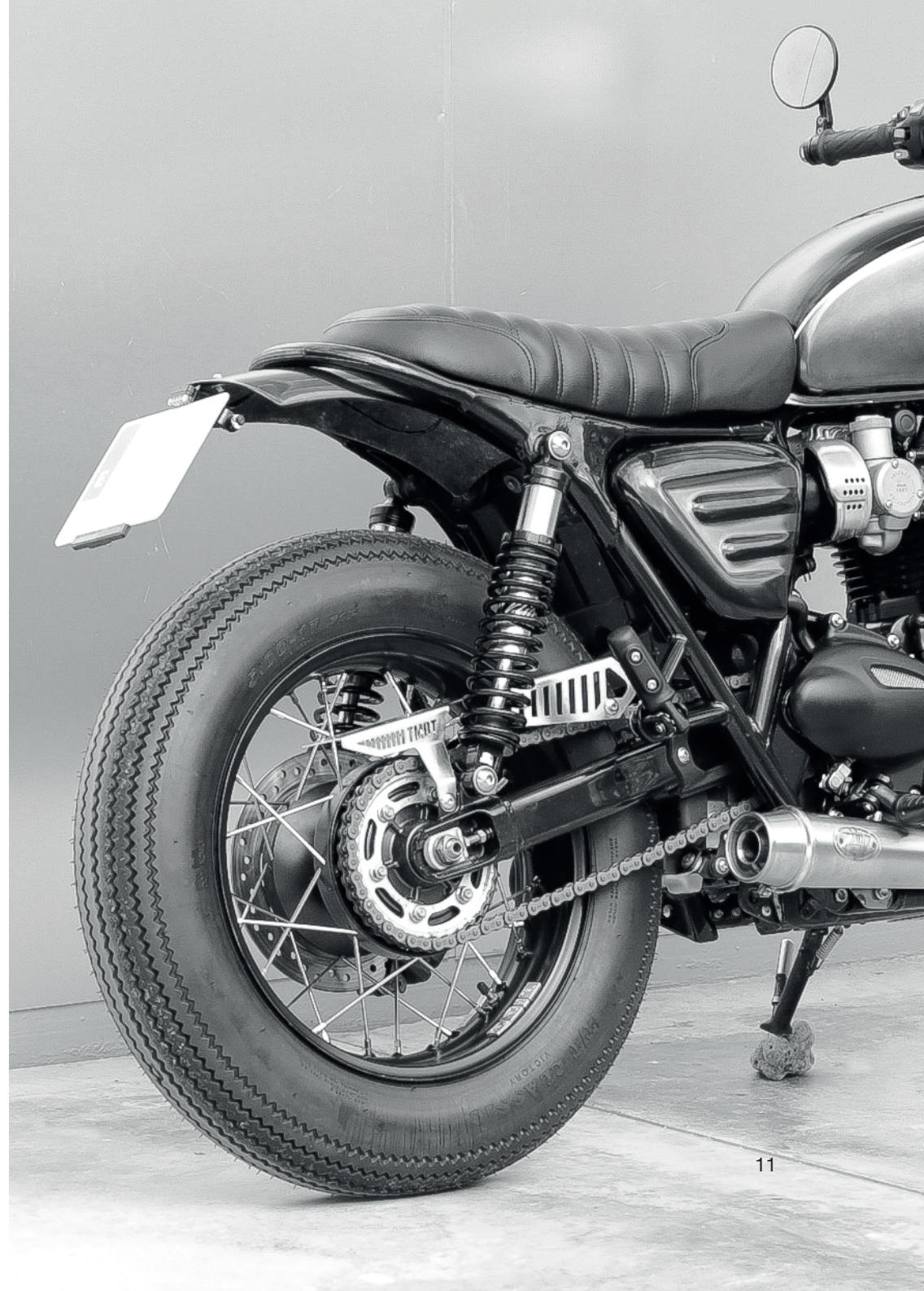
UPHOLSTERY



BLACK



BROWN





BELLY PAN **TAMARIT**

Ref: TMRT193

ITEM DESCRIPTION

COMPATIBLE WITH: Thruxton 1200, Thruxton 1200 R, Bonneville T100, Bonneville T120, Street Twin and Street Scrambler, Speed Twin.

MATERIALS: High quality fiberglass, aluminum and stainless steel.



UNPAINTED



JET BLACK



KOROSI RED



MATT IRONSTONE







SUMP GUARD
YUNQUE

Ref: TMRT183

ITEM DESCRIPTION

COMPATIBLE WITH: Bonneville T100, Bonneville T120, Street Twin, Street Scrambler, Thruxton 1200, Thruxton 1200 R and Speed Twin.

MATERIALS: 2mm thick stainless steel.



SUMP GUARD

HIMALAYA

Ref: TMRT435

ITEM DESCRIPTION

COMPATIBLE WITH: All new generation Triumph models as long as the exhausts are fitted on top.
(As Scramblers)

MATERIALS: 2mm thick stainless steel.





FENDERS

REAR FENDER ELIMINATOR KIT

Ref: TMRT511

ITEM DESCRIPTION

COMPATIBLE WITH: Bonneville T100, Bonneville T120, Street Twin and Street Twin CUP.

MATERIALS: 2mm thick iron and lacquered with thermostatic paint





FENDERS

LITTLE BASTARD

Ref: TMRT122

ITEM DESCRIPTION

COMPATIBLE WITH: Bonneville models from 2016, Street Twin and Street Twin CUP.

MATERIALS: High quality fiberglass.

COLOR



UNPAINTED



JET BLACK



MATT BLACK



MATT GRAPHITE



SILVER ICE



CRANBERRY RED



MATT IRONSTONE





SIDE COVERS

DALUA SIDE COVER

Ref: TMRT94

ITEM DESCRIPTION

COMPATIBLE WITH: Triumph Modern Classic models from 2016.

MATERIALS: Fiberglass. Possibility of painting and lacquering.

SIDES: Left or right.

COLOR



UNPAINTED



PAINTED





SIDE COVERS
ENGINE BADGES

Ref: TMRT245

ITEM DESCRIPTION

COMPATIBLE WITH: Triumph Modern Classic models from 2016.

MATERIALS: 4 mm iron. Possibility of painting and lacquering.





SIDE COVERS MURALLA SIDE

Ref: TMRT107

ITEM DESCRIPTION

COMPATIBLE WITH: Bonneville T100, Bonneville T120, Street Twin and Street Scrambler (this one only for the left side).

MATERIALS: Fiberglass. Possibility of painting and lacquering.

SIDES: Left or right.

COLOR



UNPAINTED



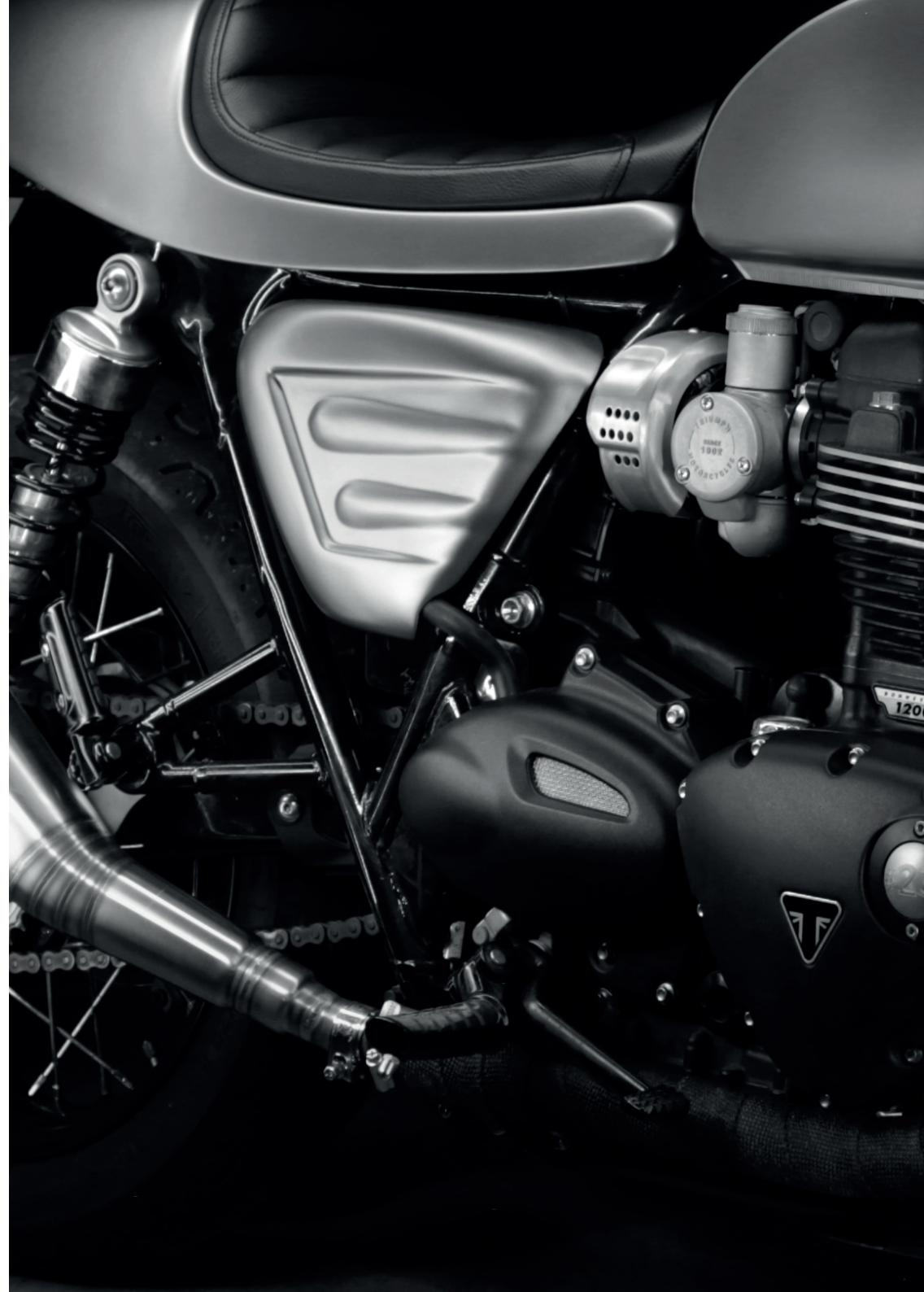
JET BLACK



KOROSI RED



MATT IRONSTONE







MASKS

FRONTAL DAKAR

Ref: TMRT244

ITEM DESCRIPTION

COMPATIBLE WITH: Bonneville T100, Bonneville T120, Thruxton 1200 and Speed Twin.

MATERIALS: Fiberglass frontal and black lacquered iron brackets.

COLOR



UNPAINTED



PAINTED



SOPORTE
FOUR LINE HEADLIGHT BRACKET

Ref: TMRT188

ITEM DESCRIPTION

COMPATIBLE WITH: Triumph Bonneville T100, Bonneville T120, Thruxton 1200, Street Twin, Street Scrambler, Street Cup, Scrambler 1200, Scrambler 1200 XE.

MATERIALS: Black lacquered iron.



METAL PARTS

HEADLIGHT GRILLE

Ref: TMRT185

ITEM DESCRIPTION

ONE MODEL

COMPATIBLE WITH: Thruxton 1200, Thruxton 1200 R, Bonneville T100 and Bonneville T120, Speed Twin.

MATERIALS: Black lacquered iron.





MATAL PARTS

CHAIN COVERS

Ref: TMRT246

ITEM DESCRIPTION

COMPATIBLE WITH: Bonneville T100, Bonneville T120, Street Twin, Street Twin CUP and Street Scrambler.

MATERIALS: 360 polished stainless steel.





EXHAUSTS

CAT DELETE - X PIPE

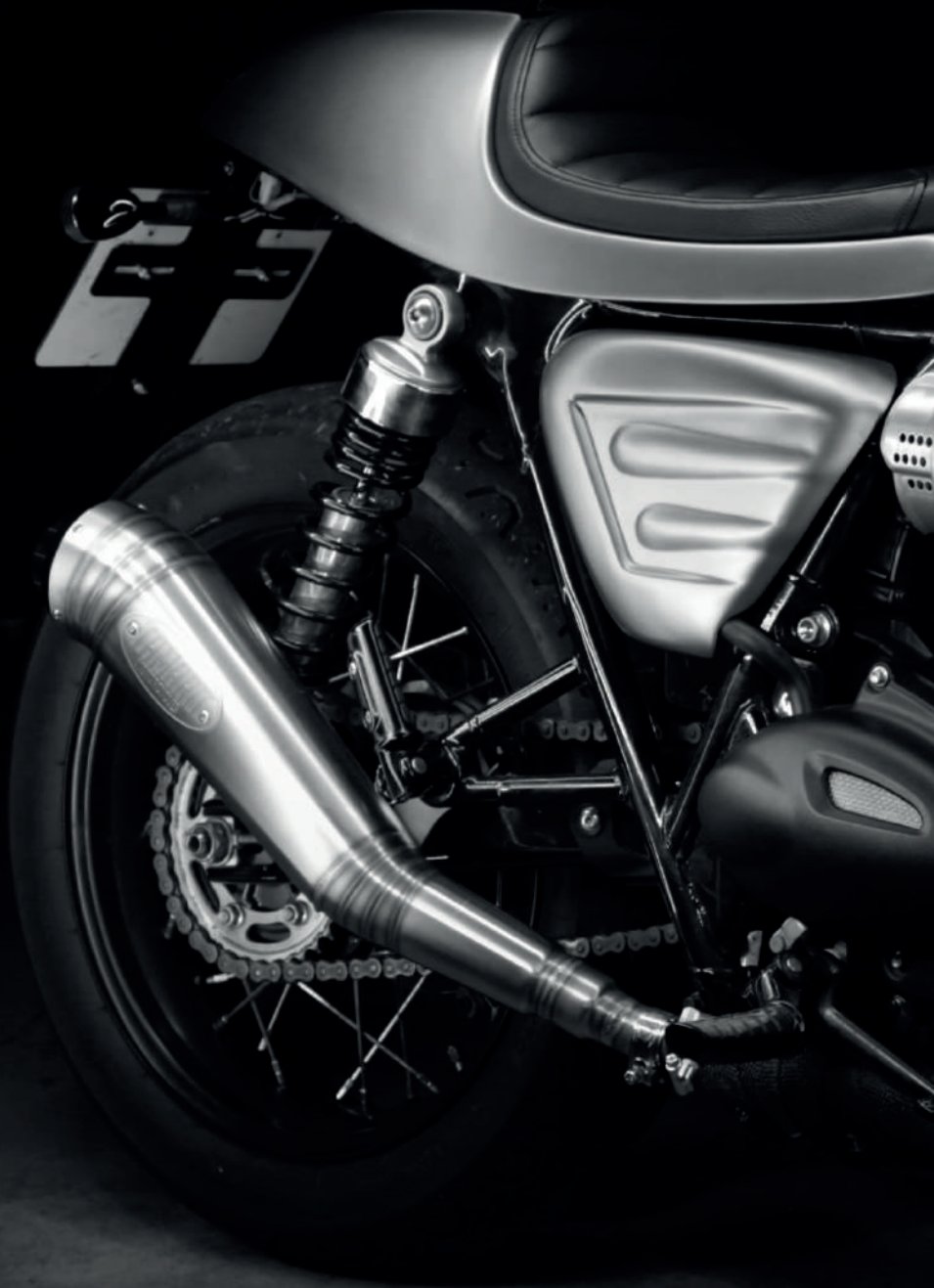
Ref: TMRT274

ITEM DESCRIPTION

COMPATIBLE WITH: Bonneville T100, Bonneville T120, Street Twin, Street CUP, Street Scrambler, Thruxton 1200 and Thruxton 1200 R.

MATERIALS: Stainless steel.





EXHAUSTS **THOR**

Ref: TMRT79

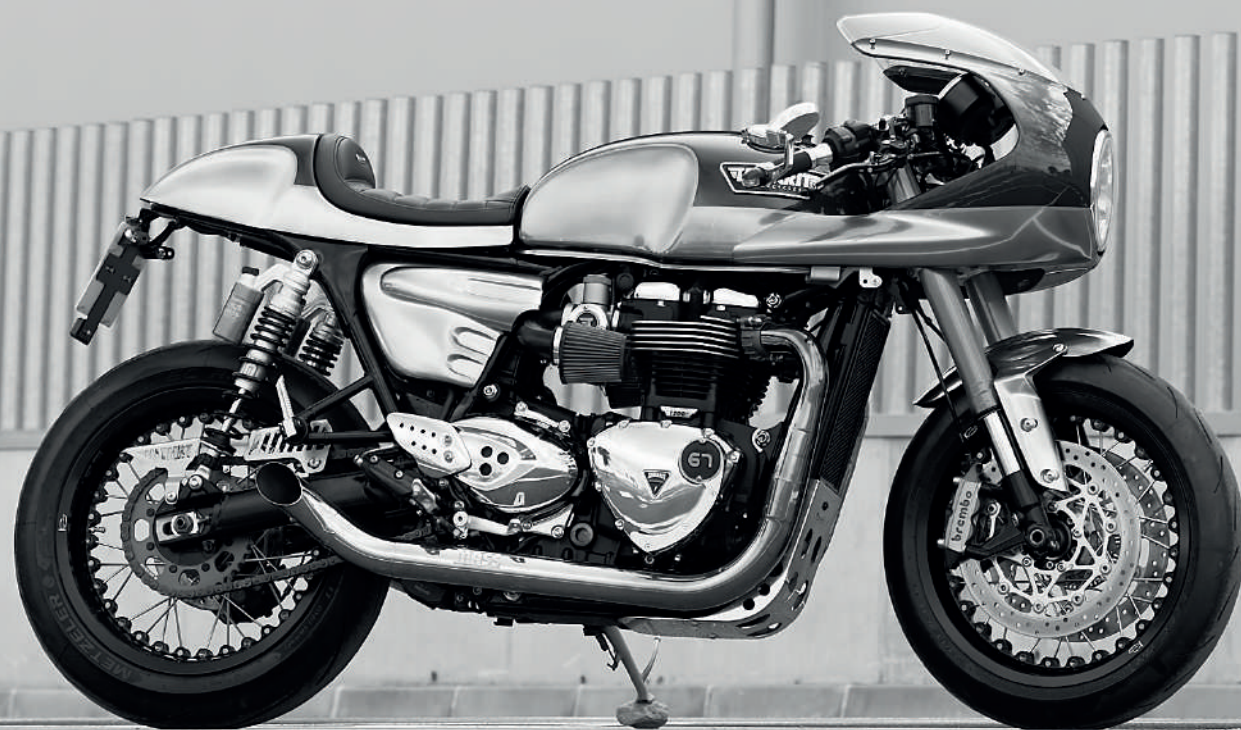
ITEM DESCRIPTION

COMPATIBLE WITH: Bonneville T100 and Bonneville T120.
MATERIALS: Stainless steel and aluminum.

THRUXTON 1200 AND THRUXTON 1200R

PARTS

**THE LATEST THRUXTON
MODEL, PARTS PUSHED
TO THEIR FULL
PERFORMANCE
POTENTIAL.**









SEAT MÓNACO

Ref: TMRT22

ITEM DESCRIPTION

COMPATIBLE WITH: Thruxton 1200 and Thruxton 1200R.

MATERIALS: Fiberglass, polyurethane and nautic fabric.

COLOR



UNPAINTED



JET BLACK



MATT BLACK



C. GREEN



C. WHITE



SILVER ICE



KOROSI RED



DIABLO RED



PURE WHITE

UPHOLSTERY



BLACK



BROWN







SEAT **MONZA**

Ref: TMRT550

ITEM DESCRIPTION

COMPATIBLE WITH: Thruxton 1200, Thruxton 1200R.
MATERIALS: Fiberglass, foam and nautic fabric.

UPHOLSTERY



BLACK



BROWN



BURDEOS



CAMEL





BELLY PAN TAMARIT

Ref: TMRT193

ITEM DESCRIPTION

COMPATIBLE WITH: Thruxton 1200, Thruxton 1200 R, Bonneville T100, Bonneville T120, Street Twin and Street Scrambler, Speed Twin.

MATERIALS: High quality fiberglass, aluminum and stainless steel.



UNPAINTED



JET BLACK



MATT BLACK



CRYSTAL WHITE



KOROSI RED



DIABLO RED



SILVER ICE



PURE WHITE



COMPETITION GREEN







SUMP GUARD
YUNQUE

Ref: TMRT183

ITEM DESCRIPTION

COMPATIBLE WITH: Bonneville T100, Bonneville T120, Street Twin, Street Scrambler, Thruxton 1200, Thruxton 1200 R and Speed Twin.

MATERIALS: 2mm thick stainless steel.



SUMP GUARD

HIMALAYA

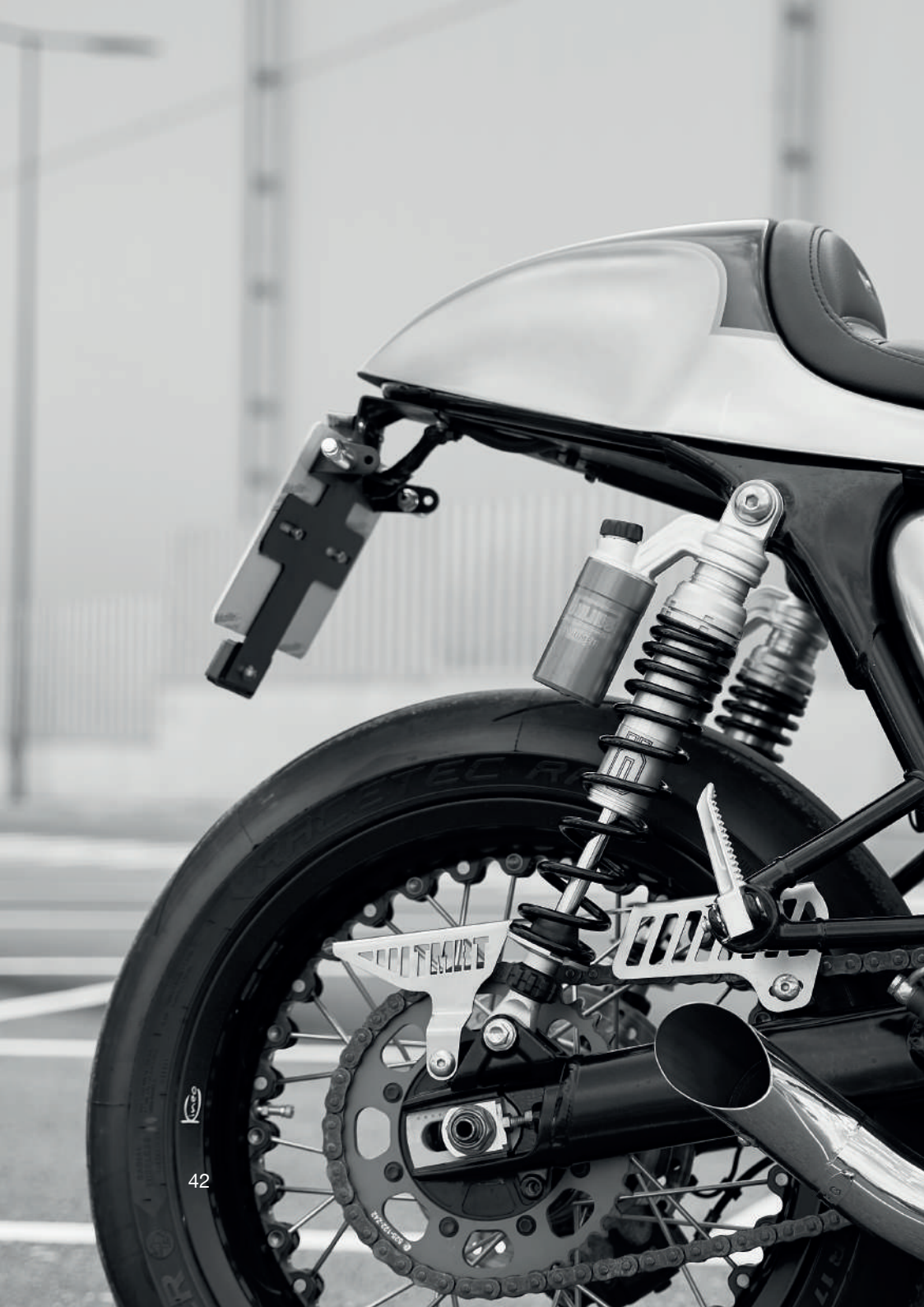
Ref: TMRT435

ITEM DESCRIPTION

COMPATIBLE WITH: All new generation Triumph models as long as the exhausts are fitted on top.
(As Scramblers)

MATERIALS: 2mm thick stainless steel.





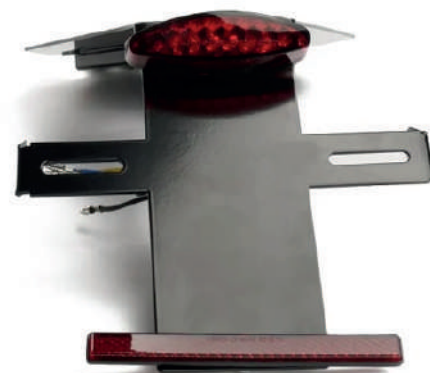
FENDERS

REAR FENDER ELIMINATOR KIT

Ref: TMRT512

ITEM DESCRIPTION

COMPATIBLE WITH: Triumph Thruxton 1200 and Thruxton 1200 R.
MATERIALS: 2mm thick iron and lacquered with thermostatic paint.





FENDERS LITTLE BASTARD



Ref: TMRT133

MODEL:
Thruxton R rear fender eliminator kit

ITEM DESCRIPTION

COMPATIBLE WITH: Triumph Thruxton R.
MATERIALS: High quality fiberglass.

COLOR



UNPAINTED



JET BLACK



MATT BLACK



COMPETITION GREEN



CHRYSTAL WHITE



SILVER ICE



DIABLO RED



Ref: TMRT129

MODEL:
Thruxton 1200 rear fender eliminator kit

ITEM DESCRIPTION

COMPATIBLE WITH: Triumph Thruxton 1200 and Speed Twin.
MATERIALS: High quality fiberglass.

COLOR



UNPAINTED



JET BLACK



MATT BLACK



COMPETITION GREEN



PURE WHITE



KOROSI RED





SIDE COVERS

DALUA SIDE COVER

Ref: TMRT94

ITEM DESCRIPTION

COMPATIBLE WITH: Triumph Modern Classic models from 2016.

MATERIALS: Fiberglass. Possibility of painting and lacquering.

SIDES: Left or right.

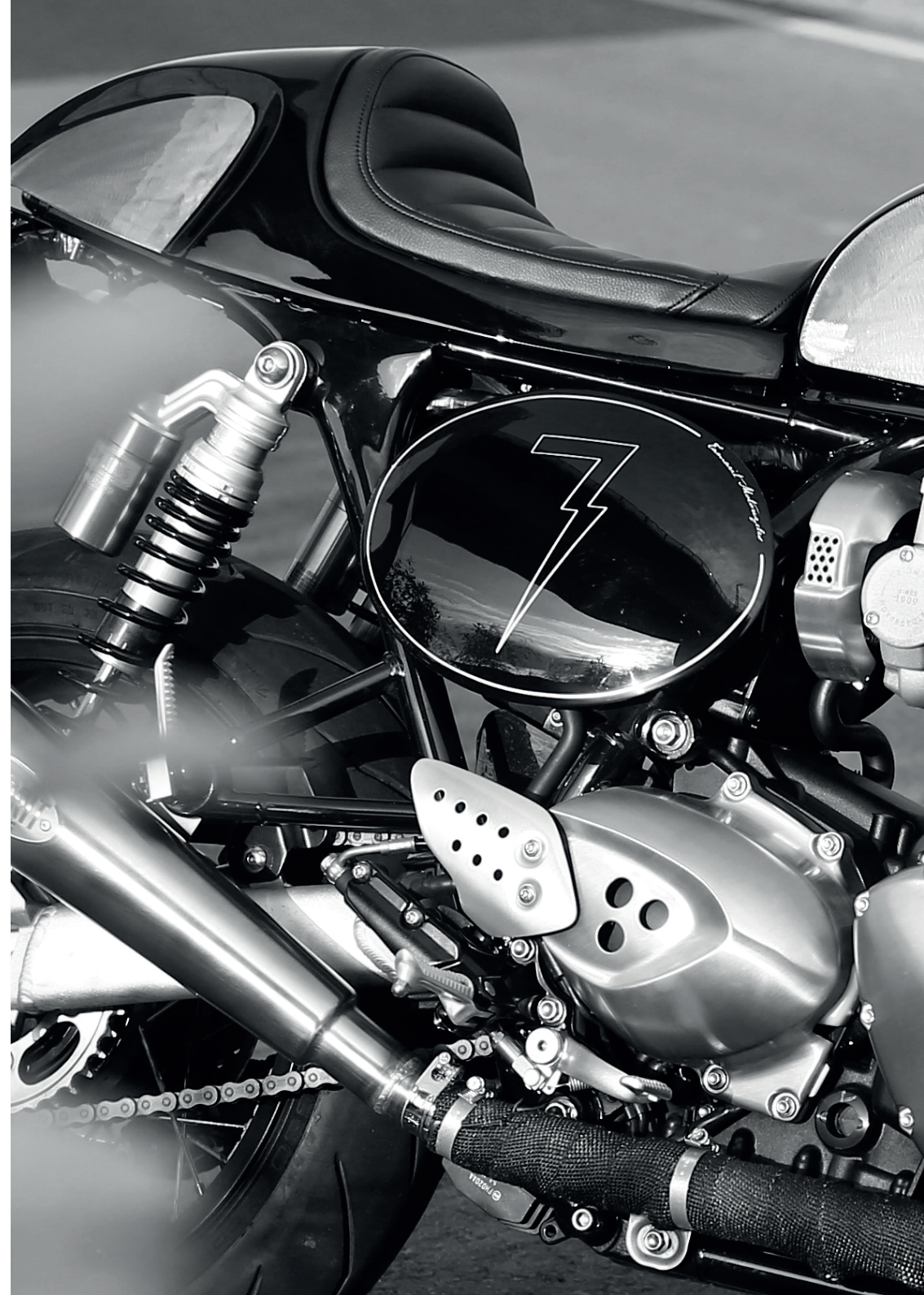
COLOR

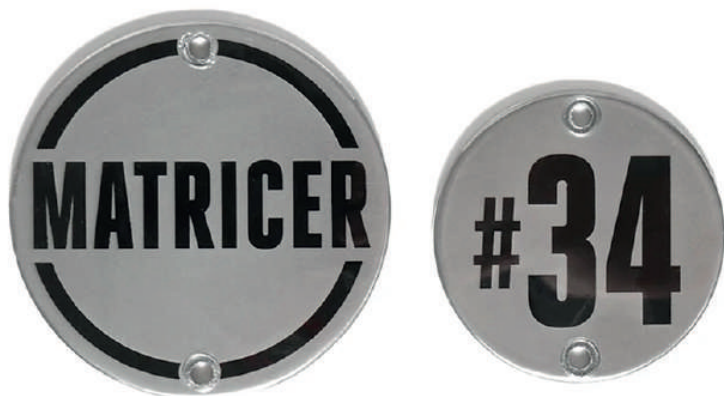


UNPAINTED



PAINTED





SIDE COVERS
ENGINE BADGES

Ref: TMRT245

ITEM DESCRIPTION

COMPATIBLE WITH: Triumph Modern Classic models from 2016.
MATERIALS: 4 mm iron. Possibility of painting and lacquering.





SIDE COVERS

DAKOTA SIDE COVER

Ref: TMR266

ITEM DESCRIPTION

COMPATIBLE WITH: Triumph Thruxton 1200 and Thruxton 1200R.

MATERIALS: Fiberglass. Possibility of painting and lacquering.

SIDES: Left or right.

COLORS



UNPAINTED



JET BLACK



MATT BLACK



C. GREEN



C. WHITE



SILVER ICE



KOROSI RED



DIABLO RED



P. WHITE





MASKS

FRONTAL DAKAR

Ref: TMRT244

ITEM DESCRIPTION

COMPATIBLE WITH: Bonneville T100, Bonneville T120, Thruxton 1200 and Speed Twin.

MATERIALS: Fiberglass frontal and black lacquered iron brackets.

COLOR



UNPAINTED



PAINTED





SOPORTE
FOUR LINE HEADLIGHT BRACKET

Ref: TMRT188

ITEM DESCRIPTION

COMPATIBLE WITH: Triumph Bonneville T100, Bonneville T120, Thruxton 1200, Street Twin, Street Scrambler, Street Cup, Scrambler 1200, Scrambler 1200 XE.

MATERIALS: Black lacquered iron.



METAL PARTS

HEADLIGHT GRILLE

Ref: TMRT185

ITEM DESCRIPTION

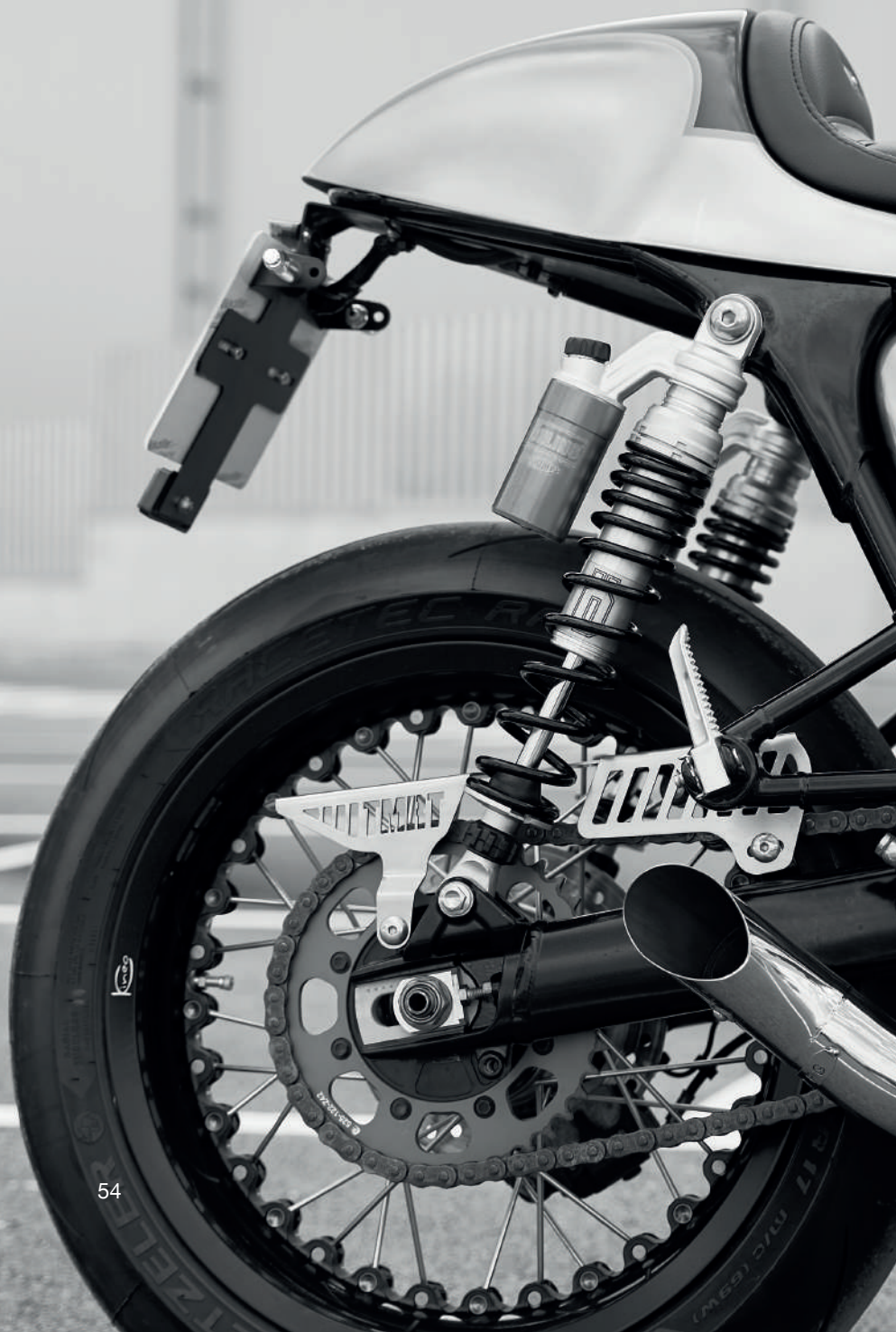
ONE MODEL

COMPATIBLE WITH: Thruxton 1200, Thruxton 1200 R, Bonneville T100 and Bonneville T120, Speed Twin.

MATERIALS: Black lacquered iron.







MATAL PARTS

CHAIN COVER

Ref: TMRT278

ITEM DESCRIPTION

COMPATIBLE WITH: Triumph Thruxton 1200,
Thruxton 1200R and Speed Twin.



EXHAUSTS

CAT DELETE - X PIPE

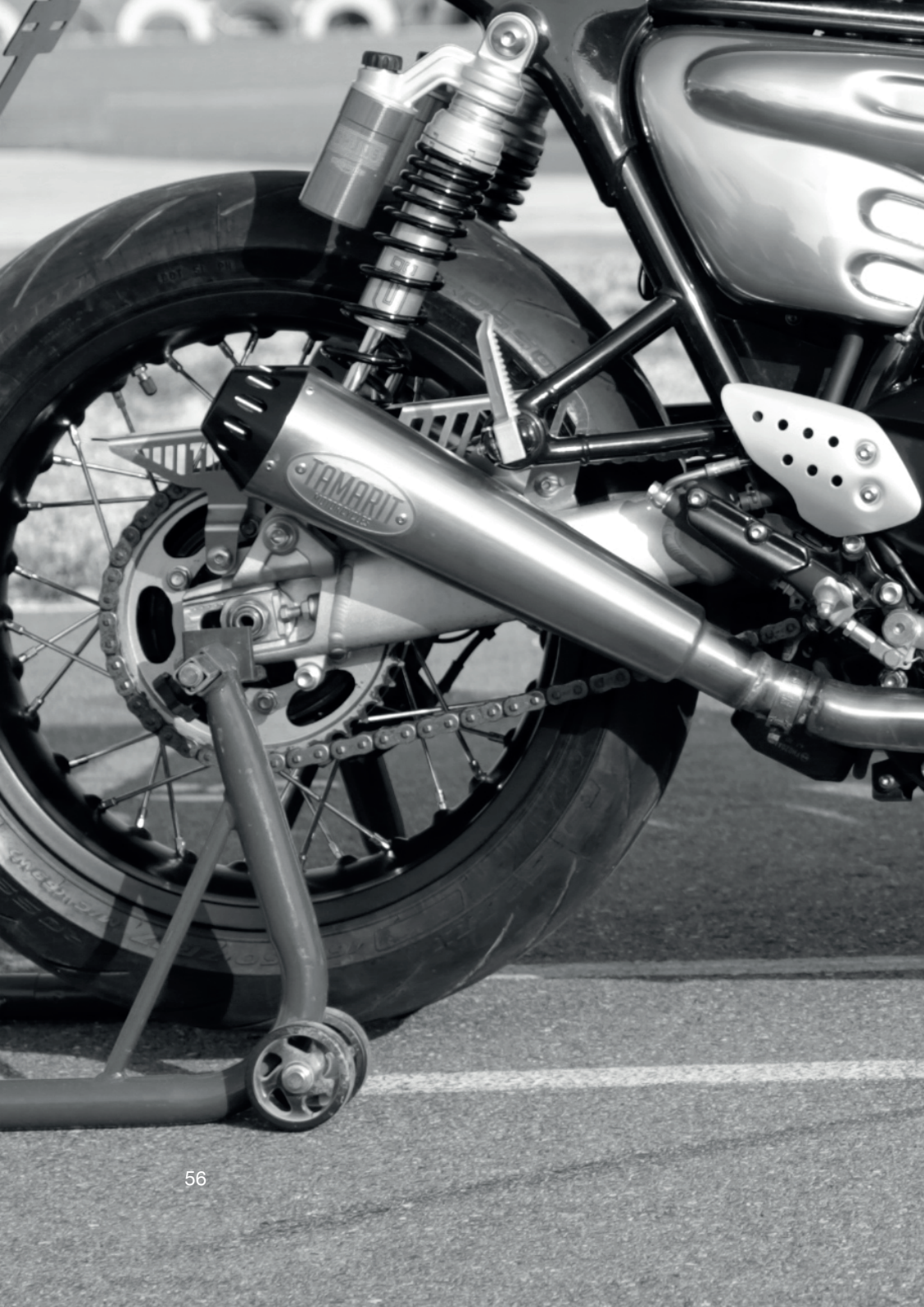
Ref: TMRT274

ITEM DESCRIPTION

COMPATIBLE WITH: Bonneville T100, Bonneville T120, Street Twin, Street CUP, Street Scrambler, Thruxton 1200 and Thruxton 1200 R.

MATERIALS: Stainless steel.





EXHAUSTS **APOLO**

Ref: TMRT80

ITEM DESCRIPTION

COMPATIBLE WITH: Thruxton 1200, Thruxton 1200 R and Speed Twin.
MATERIALS: Stainless steel and aluminum.



EXHAUSTS **THOR**

Ref: TMRT485

ITEM DESCRIPTION

COMPATIBLE WITH: Thruxton 1200, Thruxton 1200R, Speed Twin.
MATERIALS: Stainless steel and aluminum.



STREET TWIN AND STREET SCRAMBLER

PARTS

**THE MOST EXCLUSIVE
CAFE RACER
CUSTOMIZATION.**





SEATS JEREZ

Ref: TMRT39

ITEM DESCRIPTION

COMPATIBLE WITH: Bonneville T100, Bonneville T120, Street Twin, Street Cup.
MATERIALS: Fiberglass, polyurethane and nautic fabric.

COLOR



UNPAINTED



JET BLACK



KOROSI RED



MATT IRONSTONE



BLACK



BROWN

UPHOLSTERY







SEATS

SILVERSTONE

Ref: TMRT431

ITEM DESCRIPTION

COMPATIBLE WITH: Bonneville T100, Bonneville T120, Street Twin, Street Scrambler, Street Cup.
MATERIALS: Fiberglass, polyurethane and nautic fabric.

UPHOLSTERY



BLACK



BROWN



BURDEOS



CAMEL





SEATS

BIZARRA

Ref: TMRT426

ITEM DESCRIPTION

COMPATIBLE WITH: Bonneville T100, Bonneville T120, Street Twin, Street Scrambler, Street Cup.

MATERIALS: Fiberglass, polyurethane and nautic fabric.

COLOR



BLACK



A. SILVER

UPHOLSTERY



BLACK



BROWN





SIDE COVERS

MURALLA SIDE COVER

Ref: TMRT107

ITEM DESCRIPTION

COMPATIBLE WITH: Bonneville T100, Bonneville T120, Street Twin and Street Scrambler (this one only for the left side).

MATERIALS: Fiberglass. Possibility of painting and lacquering.

SIDES: Left or right.

COLOR



UNPAINTED



JET BLACK



KOROSI RED



MATT IRONSTONE





SIDE COVERS

DALUA SIDE COVER

Ref: TMRT94

ITEM DESCRIPTION

COMPATIBLE WITH: Triumph Modern Classic models from 2016.

MATERIALS: Fiberglass. Possibility of painting and lacquering.

SIDES: Left or right.

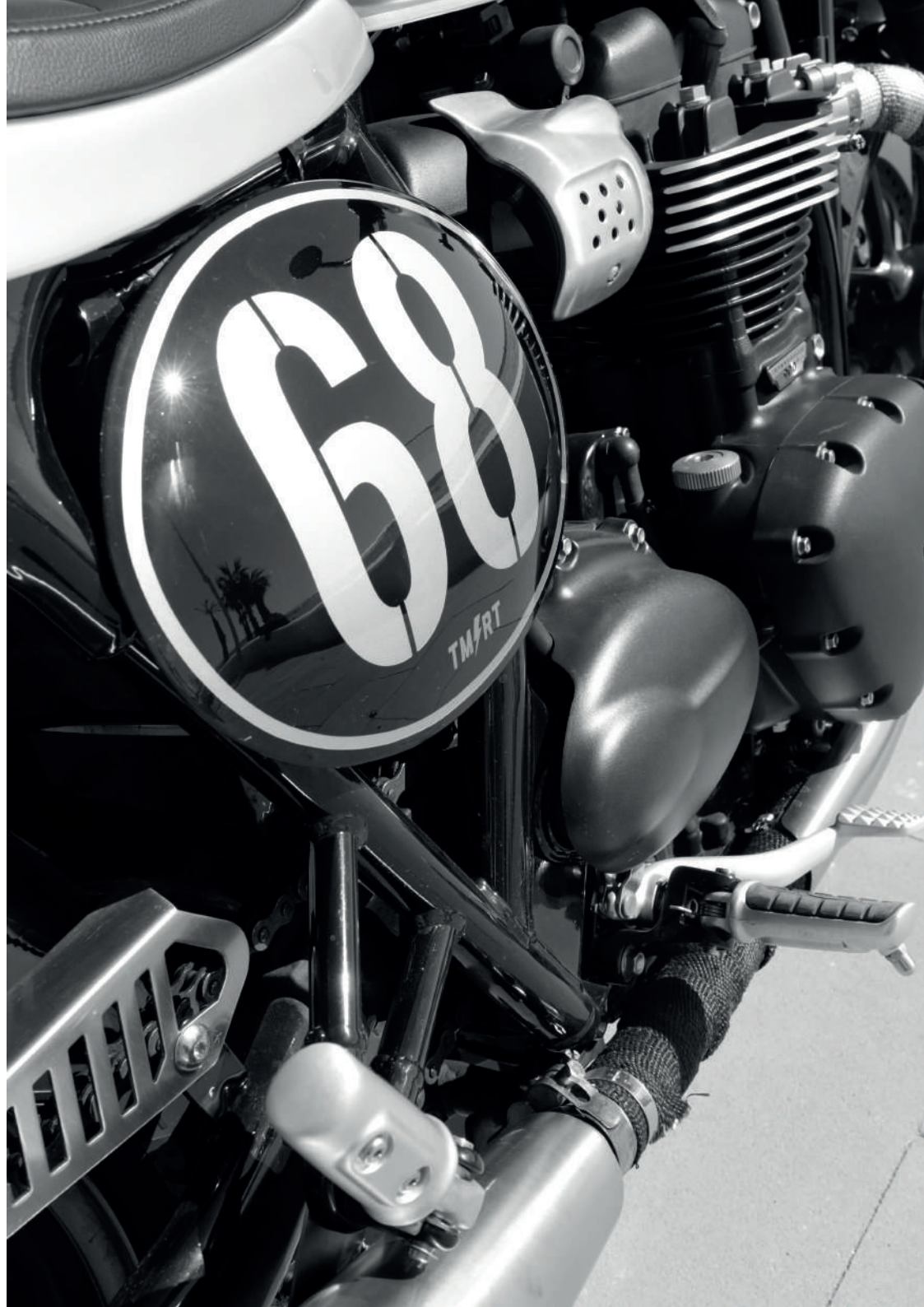
COLOR



UNPAINTED



PAINTED





SIDE COVERS
ENGINE BADGES

Ref: TMRT245

ITEM DESCRIPTION

COMPATIBLE WITH: Triumph Modern Classic models from 2016.
MATERIALS: 4 mm iron. Possibility of painting and lacquering.





BELLY PAN TAMARIT

Ref: TMRT193

ITEM DESCRIPTION

COMPATIBLE WITH: Thruxton 1200, Thruxton 1200 R, Bonneville T100, Bonneville T120, Street Twin and Street Scrambler, Speed Twin.

MATERIALS: High quality fiberglass, aluminum and stainless steel.

COLORS



UNPAINTED



JET BLACK



KOROSI RED



MATT IRONSTONE







FENDERS

LITTLE BASTARD

Ref: TMRT122

ITEM DESCRIPTION

COMPATIBLE WITH: Bonneville models from 2016, Street Twin and Street Twin CUP.

MATERIALS: High quality fiberglass.

COLOR



UNPAINTED



JET BLACK



KOROSI RED



MATT IRONSTONE





FENDERS

REAR FENDER ELIMINATOR KIT

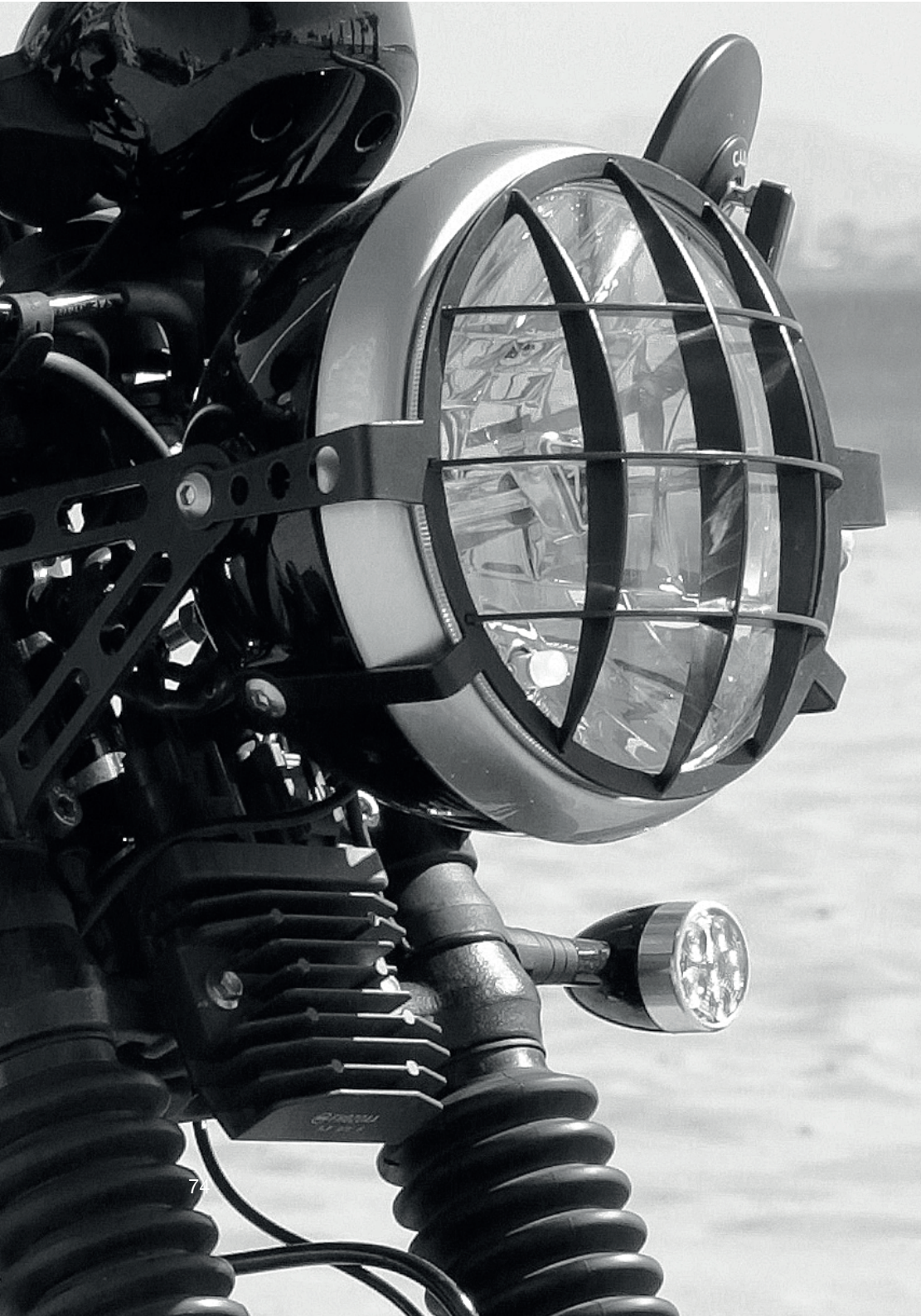
Ref: TMRT511

ITEM DESCRIPTION

COMPATIBLE WITH: Bonneville T100, Bonneville T120, Street Twin and Street Twin CUP.
MATERIALS: 2mm thick iron and lacquered with thermostatic paint







METAL PARTS

HEADLIGHT GRILLE

Ref: TMRT184

ITEM DESCRIPTION

STREET ONE MODEL

COMPATIBLE WITH: Street Twin and Street Scrambler.

MATERIALS: Black lacquered iron.





SUMP GUARD
YUNQUE

Ref: TMRT183

ITEM DESCRIPTION

COMPATIBLE WITH: Bonneville T100, Bonneville T120, Street Twin, Street Scrambler, Thruxton 1200, Thruxton 1200 R and Speed Twin.

MATERIALS: 2mm thick stainless steel.



SUMP GUARD

HIMALAYA

Ref: TMRT435

ITEM DESCRIPTION

COMPATIBLE WITH: All new generation Triumph models as long as the exhausts are fitted on top.
(As Scramblers)

MATERIALS: 2mm thick stainless steel.





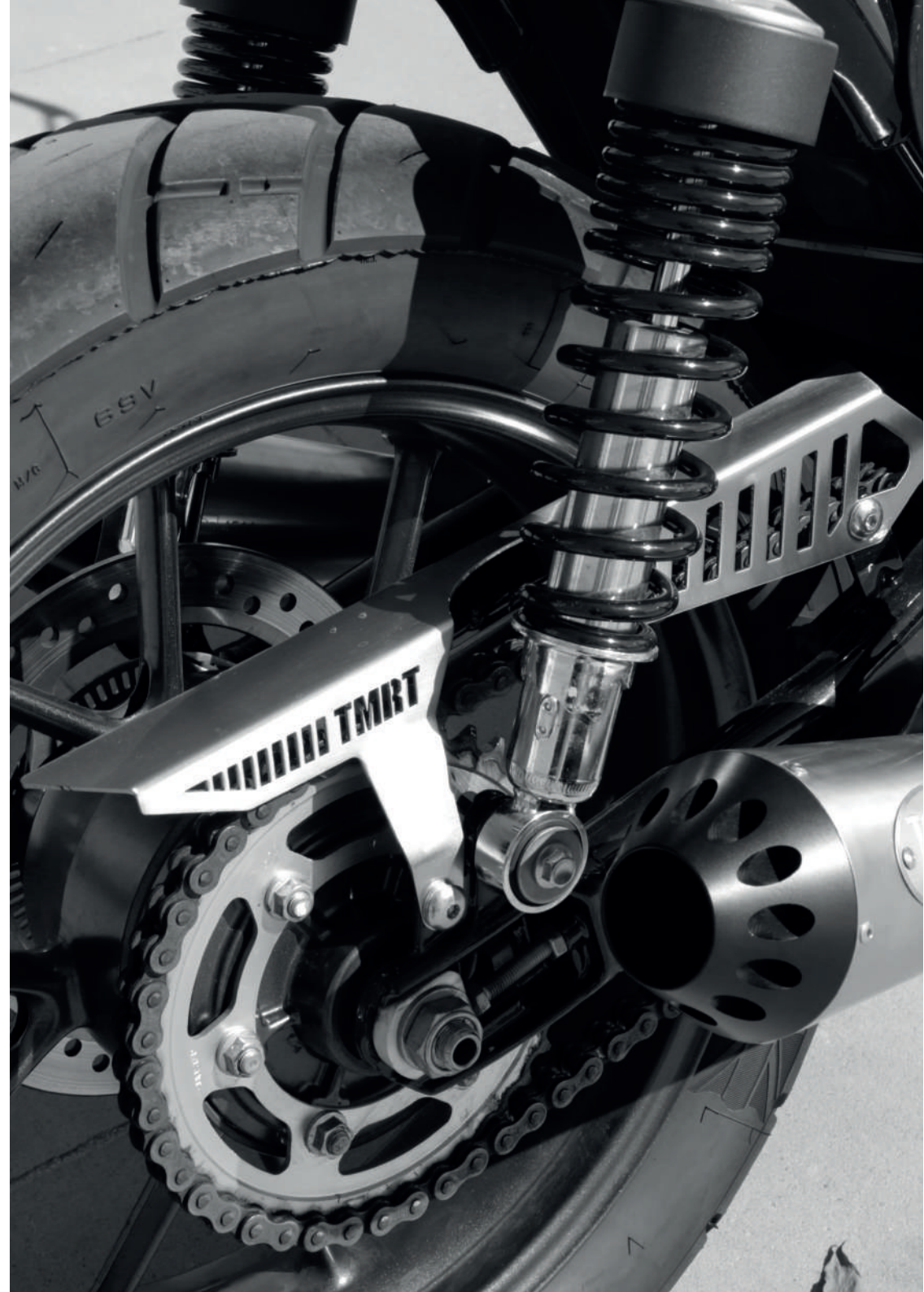
MATAL PARTS
CHAIN COVERS

Ref: TMRT246

ITEM DESCRIPTION

COMPATIBLE WITH: Bonneville T100, Bonneville T120, Street Twin, Street Twin CUP and Street Scrambler.

MATERIALS: 360 polished stainless steel.





BRACKETS

STREET TWIN SPEEDO BRACKET PACK

Ref: TMRT204

ITEM DESCRIPTION

COMPATIBLE WITH: Triumph Street Twin and Street Twin CUP.
MATERIALS: Black lacquered iron.



EXHAUSTS

CAT DELETE - X PIPE

Ref: TMRT274

ITEM DESCRIPTION

COMPATIBLE WITH: Bonneville T100, Bonneville T120, Street Twin, Street CUP, Street Scrambler, Thruxton 1200 and Thruxton 1200 R.
MATERIALS: Stainless steel.





EXHAUSTS

ODIN

Ref: TMRT251

ITEM DESCRIPTION

COMPATIBLE WITH: Street Twin, Street Cup.
MATERIALS: Stainless steel and aluminum.



SCRAMBLER 1200
AND SCRAMBLER 1200 XE
PARTS

**EXCLUSIVE PARTS
INSPIRED BY THE
SCRAMBLER ADRENALINE.**









SEAT
ALPINE

Ref: TMRT507

ITEM DESCRIPTION

COMPATIBLE WITH: Scrambler 1200, Scrambler 1200 XE.
MATERIALS: Fiberglass, foam and nautic fabric.

UPHOLSTERY



BLACK BROWN BURDEOS CAMEL





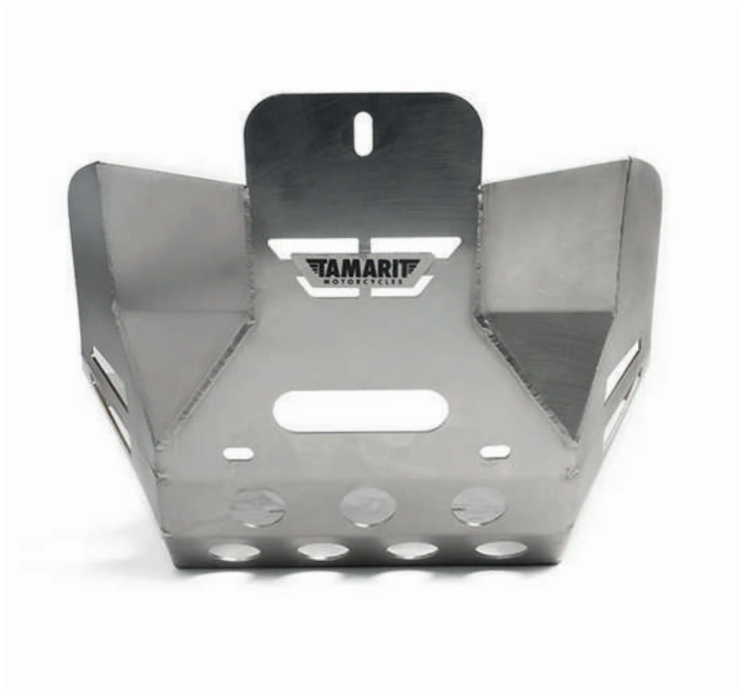


SUMP GUARD
PATAGONIA

Ref: TMRT516

ITEM DESCRIPTION

COMPATIBLE WITH: Scrambler 1200, Scrambler 1200 XE.
MATERIALS: 2mm thick stainless steel.





FENDERS

SAHARA BASTARD

Ref: TMRT517

ITEM DESCRIPTION

COMPATIBLE WITH: Scrambler 1200, Scrambler 1200 XE.
MATERIALS: High quality fiberglass and stainless steel.

COLOR



UNPAINTED



JET BLACK



COBALT BLUE



BROOKLANDS GREEN







MASKS

ATLAS FRONT MASK

Ref: TMRT522

ITEM DESCRIPTION

COMPATIBLE WITH: Bcrambler 1200, Scrambler 1200 XE.

MATERIALS: Fiberglass frontal and black lacquered iron brackets.

COLOR



UNPAINTED



PAINTED





SIDE COVERS
ENGINE BADGES

Ref: TMRT245

ITEM DESCRIPTION

COMPATIBLE WITH: Triumph Modern Classic models from 2016.
MATERIALS: 4 mm iron. Possibility of painting and lacquering.





MATAL PARTS

CHAIN COVERS

Ref: TMRT515

MODEL: Scrambler 1200

ITEM DESCRIPTION

COMPATIBLE WITH: Scrambler 1200, Scrambler 1200 XE
MATERIALS: 360 polished stainless steel.



METAL PARTS

HEADLIGHT GRILLE

Ref: TMRT523

ITEM DESCRIPTION

SCRAMBLER 1200 MODEL

COMPATIBLE WITH: Scrambler 1200, Scrambler 1200 XE.

MATERIALS: Black lacquered iron.





EXHAUST **DAKAR**

Ref: TMRT591

ITEM DESCRIPTION

COMPATIBLE WITH: Scrambler 1200, Scrambler 1200XE.

MATERIALS: Stainless steel and heavy duty fiberglass. Possibility of painting and lacquering.

SPEED TWIN

PARTS

**QUALITY AND
DESIGN IN ITS MOST
VERSATILE SPORT
VERSION.**









SEATS SUZUKA

Ref: TMRT501

ITEM DESCRIPTION

COMPATIBLE WITH: Speed Twin.
MATERIALS: Fiberglass, polyurethane and nautic fabric.

COLOR



UNPAINTED



JET BLACK



SILVER ICE



KOROSI RED

UPHOLSTERY



BLACK



BROWN







SEATS

MUGELLO

Ref: TMRT495

ITEM DESCRIPTION

COMPATIBLE WITH: Speed Twin.

MATERIALS: Fiberglass, foam and nautic fabric.

UPHOLSTERY



BLACK



BROWN



BURDEOS



CAMEL





BELLY PAN TAMARIT

Ref: TMRT189

ITEM DESCRIPTION

COMPATIBLE WITH: Speed Twin.

MATERIALS: High quality fiberglass, aluminum and stainless steel.

COLOR



UNPAINTED



JET BLACK

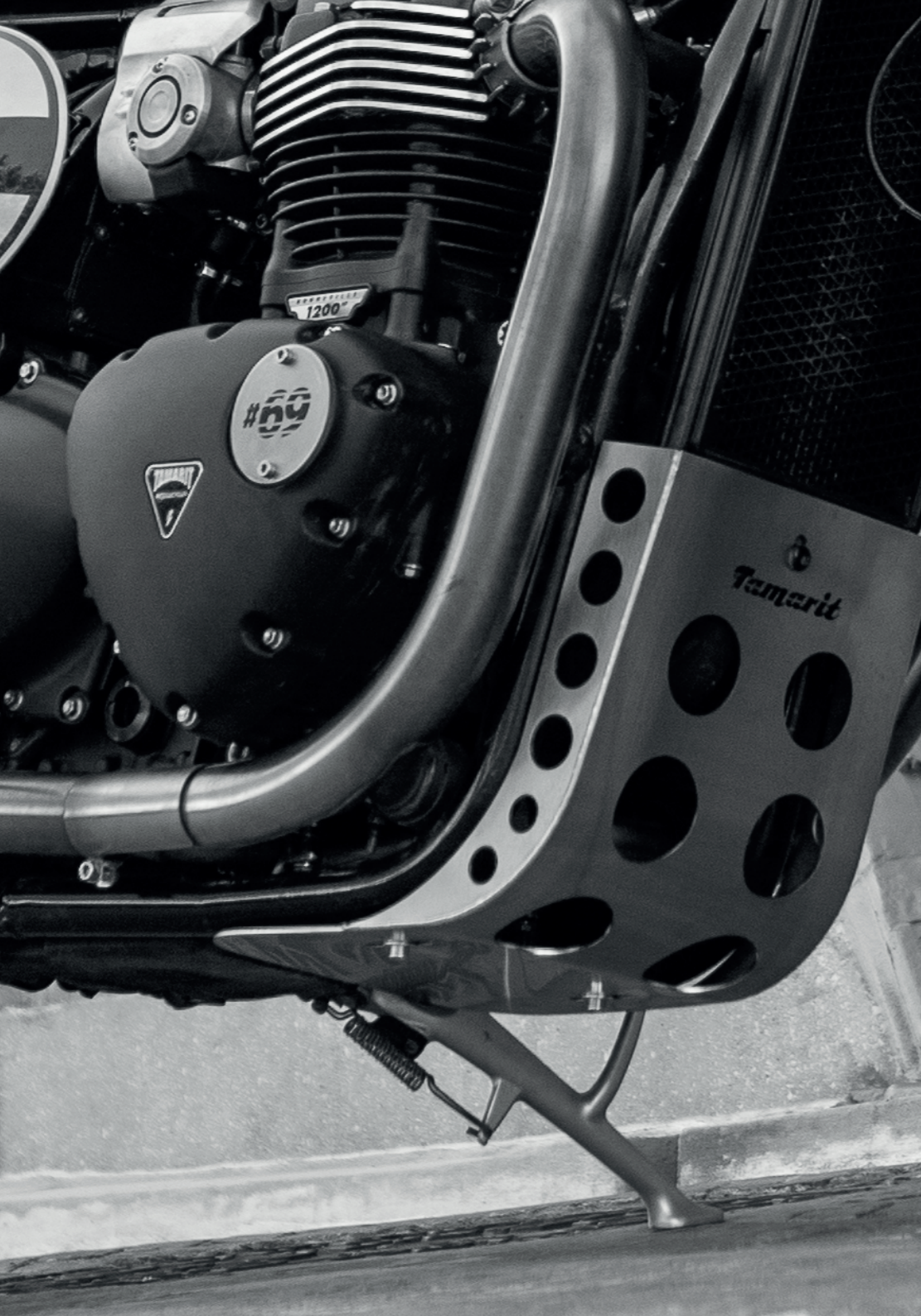


KOROSI RED



SILVER ICE





SUMP GUARD **YUNQUE**

Ref: TMRT183

ITEM DESCRIPTION

COMPATIBLE WITH: Bonneville T100, Bonneville T120, Street Twin, Street Scrambler, Thruxton 1200, Thruxton 1200 R and Speed Twin.

MATERIALS: 2mm thick stainless steel.



FENDERS

LITTLE BASTARD

Ref: TMRT129

ITEM DESCRIPTION

COMPATIBLE WITH: Triumph Thruxton 1200 and Speed Twin.
MATERIALS: High quality fiberglass.

COLOR



UNPAINTED



JET BLACK



KOROSI RED





METAL PARTS

HEADLIGHT GRILLE

Ref: TMRT185

ITEM DESCRIPTION

ONE MODEL

COMPATIBLE WITH: Thruxton 1200, Thruxton 1200 R, Bonneville T100 and Bonneville T120, Speed Twin.

MATERIALS: Black lacquered iron.







SIDE COVERS

PARIS SIDE COVER

Ref: TMRT528

ITEM DESCRIPTION

COMPATIBLE CON: Speed Twin.

MATERIALS: Fiberglass. Possibility of painting and lacquering.

SIDES: Left or right.

COLOR



UNPAINTED



JET BLACK



SILVER ICE



KOROSI RED





SIDE COVERS

DALUA SIDE COVER

Ref: TMRT94

ITEM DESCRIPTION

COMPATIBLE WITH: Triumph Modern Classic models from 2016.

MATERIALS: Fiberglass. Possibility of painting and lacquering.

SIDES: Left or right.

COLOR



UNPAINTED



PAINTED





SIDE COVERS **ENGINE BADGES**

Ref: TMRT245

ITEM DESCRIPTION

COMPATIBLE WITH: Triumph Modern Classic models from 2016.
MATERIALS: 4 mm iron. Possibility of painting and lacquering.



MASKS

FRONTAL DAKAR

Ref: TMRT244

ITEM DESCRIPTION

COMPATIBLE WITH: Bonneville T100, Bonneville T120, Thruxton 1200 and Speed Twin.
MATERIALS: Fiberglass frontal and black lacquered iron brackets.

COLOR



UNPAINTED



PAINTED





MATAL PARTS
CHAIN COVER

Ref: TMRT278

ITEM DESCRIPTION

COMPATIBLE WITH: Triumph Thruxton 1200,
Thruxton 1200R and Speed Twin.



FENDERS

REAR FENDER ELIMINATOR KIT

Ref: TMRT514

ITEM DESCRIPTION

COMPATIBLE WITH: Speed Twin.

MATERIALS: 2mm thick iron and lacquered with thermostatic paint.





EXHAUSTS **APOLO**

Ref: TMRT80

ITEM DESCRIPTION

COMPATIBLE WITH: Thruxton 1200, Thruxton 1200 R and Speed Twin.
MATERIALS: Stainless steel and aluminum.



EXHAUSTS **THOR**

Ref: TMRT485

ITEM DESCRIPTION

COMPATIBLE WITH: Thruxton 1200, Thruxton 1200R, Speed Twin.
MATERIALS: Stainless steel and aluminum.



BOBBER AND BOBBER BLACK PARTS

**REDESIGN OF THE CLASSIC
BOBBER STYLE PARTS.**









SEAT **BOBBER**

Ref: TMRT557

ITEM DESCRIPTION

COMPATIBLE WITH: Bobber and Bobber Black.

MATERIALS: Fiberglass, polyurethane and nautic fabric.

COLOR

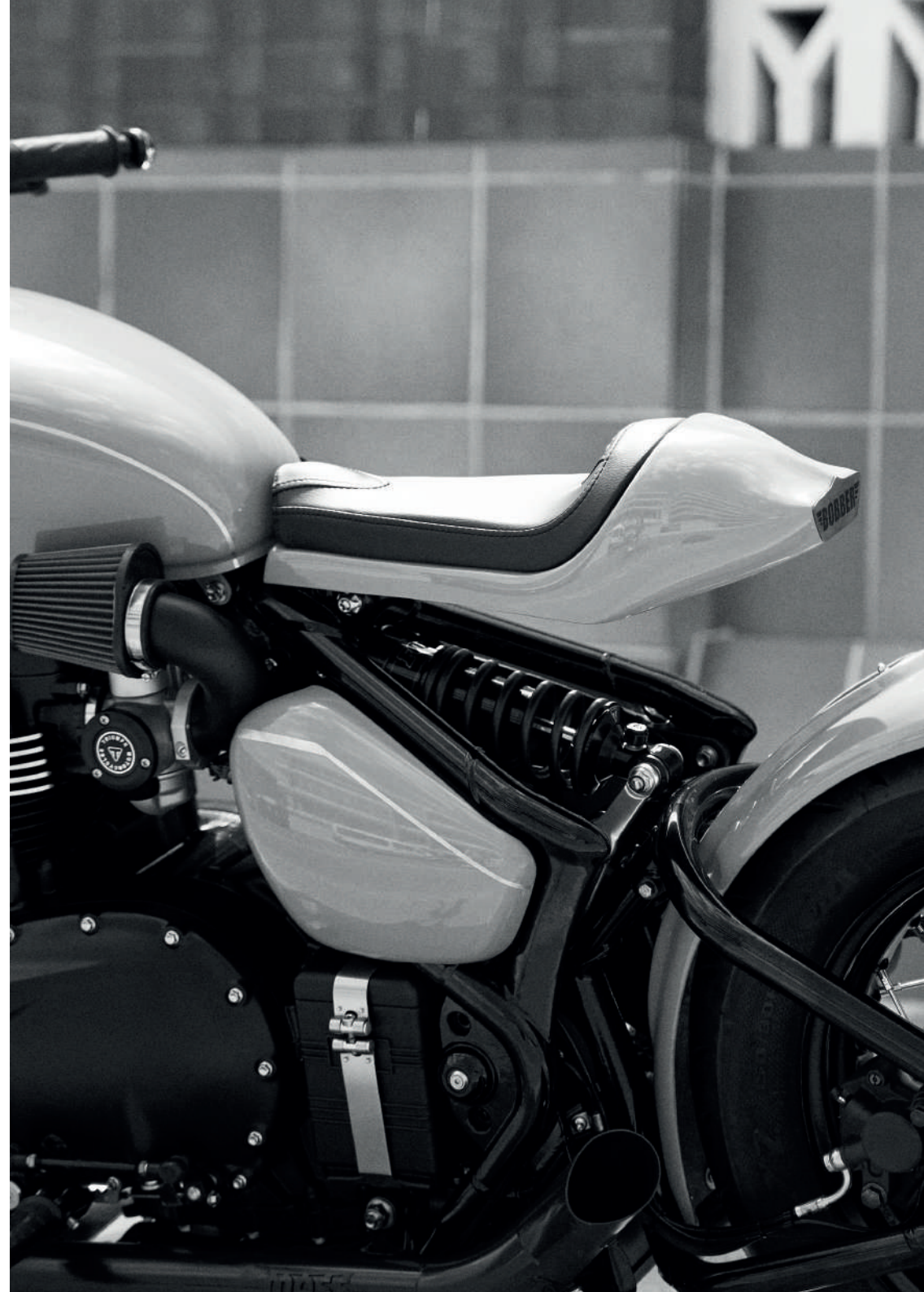


UNPAINTED J. BLACK M. BLACK MATT S. GREY IRONSTONE MORELLO KOROSI CORDOVAN C. GREEN

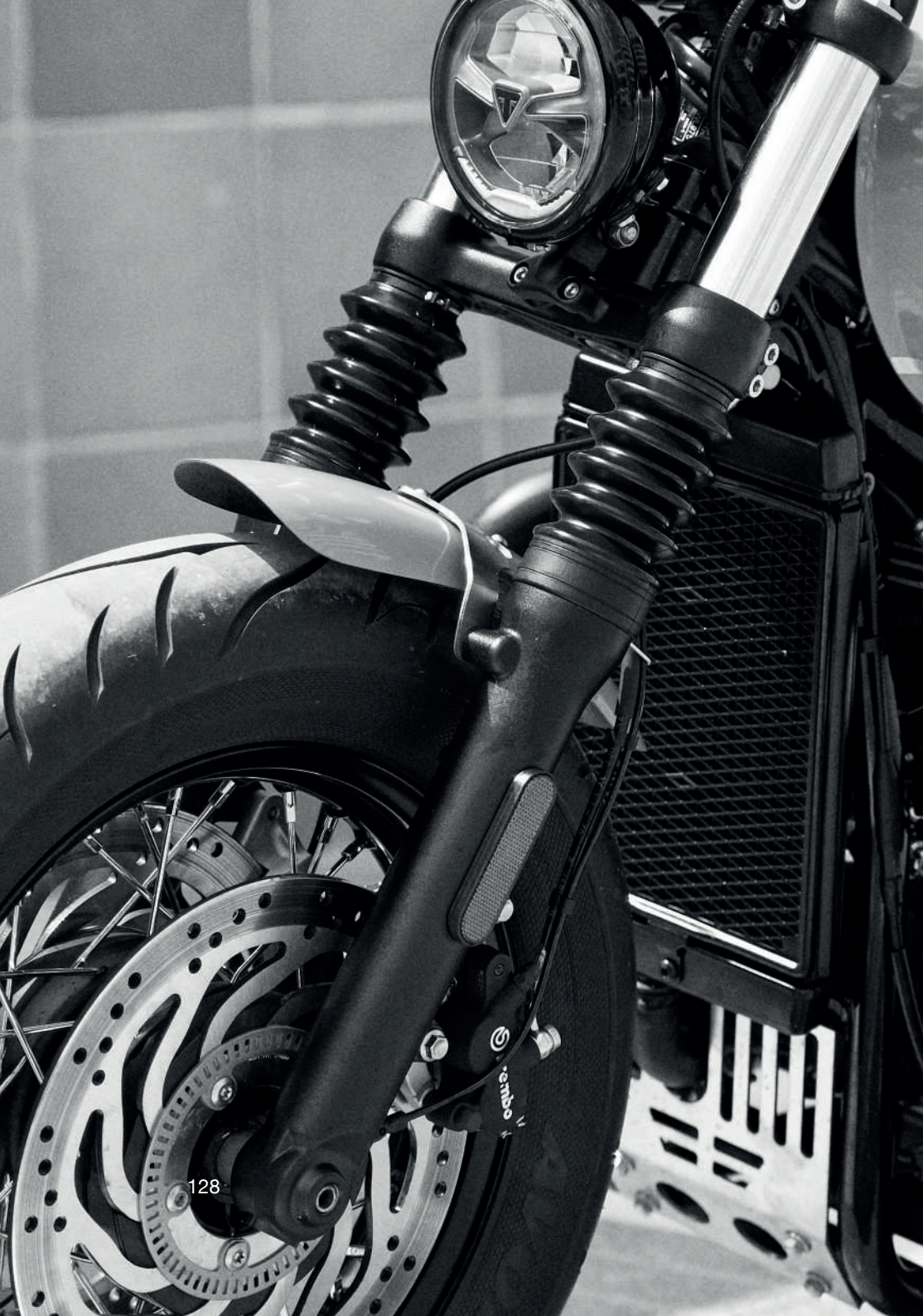
UPHOLSTERY



BLACK BROWN







FENDERS

NEW LITTLE BASTARD

Ref: TMRT120

ITEM DESCRIPTION

COMPATIBLE WITH: Thruxton 900, Thruxton EFI, Bonneville 900, Bonneville EFI, Bonneville Spirit, Scrambler 900, Scrambler EFI, Bobber and Bobber Black.

MATERIALS: High quality fiberglass and stainless steel.

COLOR



UNPAINTED J. BLACK M. BLACK MATT S. GREY IRONSTONE MORELLO KOROSI CORDOVAN C. GREEN





KIT BOBBER

Ref: TMRT583

ITEM DESCRIPTION

COMPATIBLE WITH: Bobber and Bobber Black.

MATERIALS: 3mm thick iron and lacquered with thermostatic paint, fiberglass and stainless steel.

COLOR



UNPAINTED J. BLACK M. BLACK MATT S. GREY IRONSTONE MORELLO KOROSI CORDOVAN C. GREEN







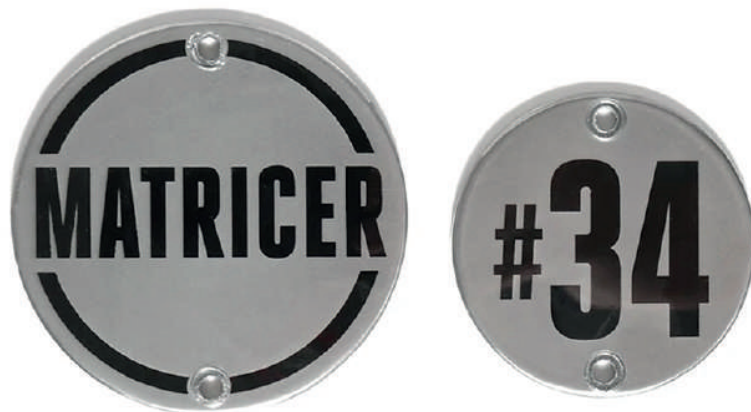
SUMP GUARD
BOBBER

Ref: TMRT574

ITEM DESCRIPTION

COMPATIBLE WITH: Bobber and Bobber Black.
MATERIALS: 2mm thick stainless steel.





SIDE COVERS
ENGINE BADGES

Ref: TMRT245

ITEM DESCRIPTION

COMPATIBLE WITH: Triumph Modern Classic models from 2016.
MATERIALS: 4 mm iron. Possibility of painting and lacquering.





EXHAUSTS

CAT DELETE - X PIPE

Ref: TMRT274

ITEM DESCRIPTION

COMPATIBLE WITH: Bonneville T100, Bonneville T120, Street Twin, Street CUP, Street Scrambler, Thruxton 1200, Thruxton 1200 R, Bobber and Bobber Black.
MATERIALS: Stainless steel.



ALL TAMARIT PARTS

CATALOGUE

**THE MOST EXCLUSIVE
DESIGN FOR THE
MANUFACTURE OF
PREMIUM PARTS.**

SEATS
JEREZ

Ref: TMRT39



ITEM DESCRIPTION

COMPATIBLE WITH: Bonneville T100, Bonneville T120, Street Twin, Street Cup.
MATERIALS: Fiberglass, polyurethane and nautic fabric.

COLOR



UPHOLSTERY



SEAT
MÓNACO

Ref: TMRT22



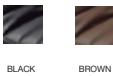
ITEM DESCRIPTION

COMPATIBLE WITH: Thruxton 1200 and Thruxton 1200R.
MATERIALS: Fiberglass, polyurethane and nautic fabric.

COLOR



UPHOLSTERY



SEATS
TRAMONTANA KIT

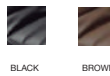
Ref: TMRT343



ITEM DESCRIPTION

COMPATIBLE WITH: Old generation air cooled Triumph. Prepared to install on the back of your motorcycle once the subframe has been cut.
MATERIALS: Fiberglass, polyurethane and nautic fabric.

UPHOLSTERY



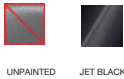
SEATS
JARAMA
Ref: TMRT2



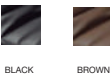
ITEM DESCRIPTION

COMPATIBLE WITH: Thruxton 900, Thruxton EFI, Bonneville 900, Bonneville EFI, Bonneville Spirit, Scrambler 900 and Scrambler EFI.
MATERIALS: Fiberglass, polyurethane and nautic fabric.

COLOR



UPHOLSTERY



SEAT
SUZUKA
Ref: TMRT501



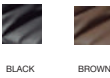
ITEM DESCRIPTION

COMPATIBLE WITH: Speed Twin.
MATERIALS: Fiberglass, polyurethane and nautic fabric.

COLOR



UPHOLSTERY



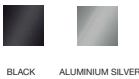
SEATS
BIZARRA
Ref: TMRT426



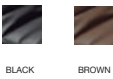
ITEM DESCRIPTION

COMPATIBLE WITH: Bonneville T100, Bonneville T120, Street Twin, Street Scrambler, Street Cup.
MATERIALS: Fiberglass, polyurethane and nautic fabric.

COLOR



UPHOLSTERY



SEATS
BOBBER
Ref: TMRT557



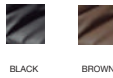
ITEM DESCRIPTION

COMPATIBLE WITH: Bobber and Bobber Black.
MATERIALS: Fiberglass, polyurethane and nautic fabric.

COLOR



UPHOLSTERY



SEATS
LE MANS

Ref: TMRT432



ITEM DESCRIPTION

COMPATIBLE WITH: Thruxton 900, Thruxton EFI, Bonneville 900, Bonneville EFI, Bonneville Spirit, Bonneville SE, Scrambler 900 and Scrambler EFI.
MATERIALS: Fiberglass, foam and nautic fabric.

UPHOLSTERY



BLACK BROWN BURDEOS CAMEL

SEAT
MONZA

Ref: TMRT550



ITEM DESCRIPTION

COMPATIBLE WITH: Thruxton 1200, Thruxton 1200R.
MATERIALS: Fiberglass, foam and nautic fabric.

UPHOLSTERY



BLACK BROWN BURDEOS CAMEL

SEATS
SILVERSTONE

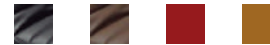
Ref: TMRT431



ITEM DESCRIPTION

COMPATIBLE WITH: Bonneville T100, Bonneville T120, Street Twin, Street Scrambler, Street Cup.
MATERIALS: Fiberglass, polyurethane and nautic fabric.

UPHOLSTERY



BLACK BROWN BURDEOS CAMEL



SEATS

MUGELLO

Ref: TMRT495



ITEM DESCRIPTION

COMPATIBLE WITH: Speed Twin.
MATERIALS: Fiberglass, foam and nautic fabric.

UPHOLSTERY



BLACK BROWN BURDEOS CAMEL



SEAT

ALPINE

Ref: TMRT507



ITEM DESCRIPTION

COMPATIBLE WITH: Scrambler 1200, Scrambler 1200 XE.
MATERIALS: Fiberglass, foam and nautic fabric.

UPHOLSTERY



BLACK BROWN BURDEOS CAMEL



REAR FENDER ELIMINATOR KIT



Ref: TMRT513

MODEL:
OG Rear fender eliminator kit

ITEM DESCRIPTION

COMPATIBLE WITH: Triumph Thruxton 900, Thruxton EFI, Bonneville 900, Bonneville EFI, Bonneville SE, Bonneville Spirit, Scrambler 900 and Scrambler EFI.
MATERIALS: 3mm thick iron and lacquered with thermostatic paint.



Ref: TMRT512

MODEL:
Thruxton rear fender eliminator kit

ITEM DESCRIPTION

COMPATIBLE WITH: Triumph Thruxton 1200 and Thruxton 1200 R.
MATERIALS: 2mm thick iron and lacquered with thermostatic paint.

FENDERS KIT BOBBER



Ref: TMRT583

ITEM DESCRIPTION

COMPATIBLE WITH: Bobber and Bobber Black.
MATERIALS: 3mm thick iron and lacquered with thermostatic paint, fiberglass and stainless steel.

COLOR



UNPAINTED JET BLACK MATT BLACK MATT S. GREY MATT IRONSTONE MORELLO RED KOROSI RED CORDOVAN RED C. GREEN



MODEL:
Speed Twin.

Ref: TMRT514

ITEM DESCRIPTION

COMPATIBLE WITH: Speed Twin.
MATERIALS: 2mm thick iron and lacquered with thermostatic paint.



Ref: TMRT511

MODEL:
Bonneville rear fender eliminator kit

ITEM DESCRIPTION

COMPATIBLE WITH: Bonneville T100, Bonneville T120, Street Twin and Street Twin CUP.
MATERIALS: 2mm thick iron and lacquered with thermostatic paint

FENDERS LITTLE BASTARD

Ref: TMRT133

MODEL:
Thruxton R rear fender eliminator kit



ITEM DESCRIPTION

COMPATIBLE WITH: Triumph Thruxton R.
MATERIALS: High quality fiberglass.

COLOR



Ref: TMRT129

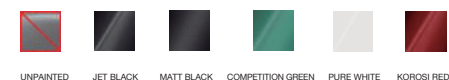
MODEL:
Thruxton 1200 rear fender eliminator kit



ITEM DESCRIPTION

COMPATIBLE WITH: Triumph Thruxton 1200 and Speed Twin.
MATERIALS: High quality fiberglass.

COLOR



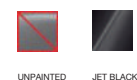
Ref: TMRT139

MODEL:
OG rear fender eliminator kit

ITEM DESCRIPTION

COMPATIBLE WITH: Triumph Bonneville, Scrambler and Thruxton until 2016.
MATERIALS: High quality fiberglass.

COLOR



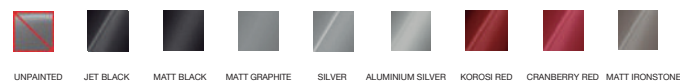
Ref: TMRT122

MODEL:
Bonneville rear fender eliminator kit

ITEM DESCRIPTION

COMPATIBLE WITH: Bonneville models from 2016, Street Twin and Street Twin CUP.
MATERIALS: High quality fiberglass.

COLOR



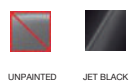
Ref: TMRT141

MODEL:
SE rear fender eliminator kit

ITEM DESCRIPTION

COMPATIBLE WITH: Triumph Bonneville SE.
MATERIALS: High quality fiberglass.

COLOR



FENDERS

NEW LITTLE BASTARD

Ref: TMRT120



ITEM DESCRIPTION

COMPATIBLE WITH: Thruxton 900, Thruxton EFI, Bonneville 900, Bonneville EFI, Bonneville Spirit, Scrambler 900, Scrambler EFI, Bobber and Bobber Black.
MATERIALS: High quality fiberglass and stainless steel.

COLOR



FENDERS

GRAND BASTARD

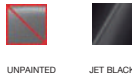
Ref: TMRT118



ITEM DESCRIPTION

COMPATIBLE WITH: Thruxton 900, Thruxton EFI, Bonneville 900, Bonneville EFI, Bonneville Spirit, Scrambler 900 and Scrambler EFI.
MATERIALS: High quality fiberglass and stainless steel.

COLOR



FENDERS

SAHARA BASTARD

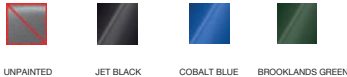
Ref: TMRT517



ITEM DESCRIPTION

COMPATIBLE WITH: Scrambler 1200, Scrambler 1200 XE.
MATERIALS: High quality fiberglass and stainless steel.

COLOR



BELLY PAN
TAMARIT

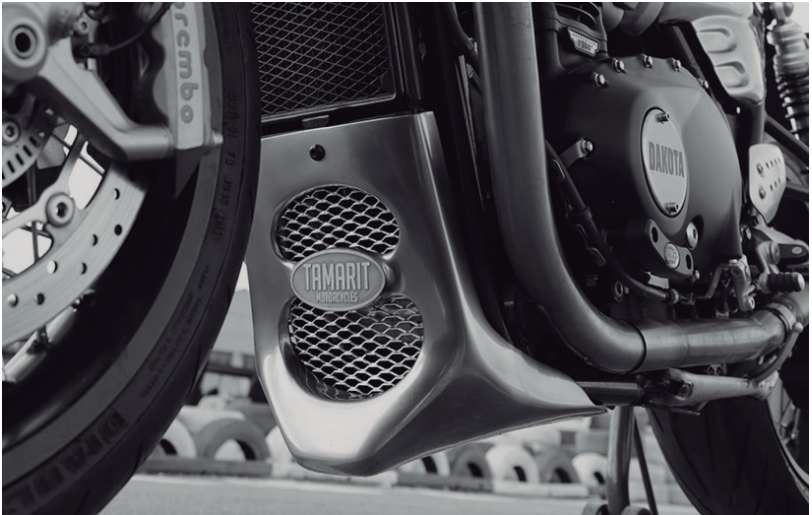
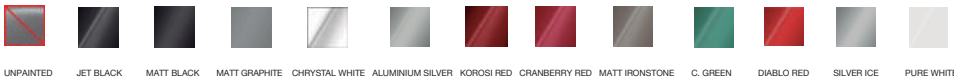
Ref: TMRT193



ITEM DESCRIPTION

COMPATIBLE WITH: Thruxton 1200, Thruxton 1200 R, Bonneville T100, Bonneville T120, Street Twin and Street Scrambler, Speed Twin.
MATERIALS: High quality fiberglass, aluminum and stainless steel.

COLOR



BELLY PAN
THE SON

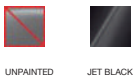
Ref: TMRT168



ITEM DESCRIPTION

COMPATIBLE WITH: Triumph Thruxton 900, Thruxton EFI, Bonneville 900, Bonneville EFI, Bonneville SE, Bonneville Spirit, Scrambler 900 and Scrambler EFI.
MATERIALS: High quality fiberglass.

COLOR



SUMP GUARD
SUPER LÓPEZ

Ref: TMRT146



ITEM DESCRIPTION

COMPATIBLE WITH: Triumph Thruxton 900, Thruxton EFI, Bonneville 900, Bonneville EFI, Bonneville SE, Bonneville Spirit, Scrambler 900 and Scrambler EFI.
MATERIALS: 4mm thick stainless steel also available satin black lacquered.

SUMP GUARD
HIMALAYA

Ref: TMRT435



ITEM DESCRIPTION

COMPATIBLE WITH: All new generation Triumph models as long as the exhausts are fitted on top. (As Scramblers)
MATERIALS: 2mm thick stainless steel.

SUMP GUARD
YUNQUE

Ref: TMRT183



ITEM DESCRIPTION

COMPATIBLE WITH: Bonneville T100, Bonneville T120, Street Twin, Street Scrambler, Thruxton 1200, Thruxton 1200 R and Speed Twin.
MATERIALS: 2mm thick stainless steel.

SUMP GUARD
PATAGONIA

Ref: TMRT516



ITEM DESCRIPTION

COMPATIBLE WITH: Scrambler 1200, Scrambler 1200 XE.
MATERIALS: 2mm thick stainless steel.

SUMP GUARD
HUMMER

Ref: TMRT177



ITEM DESCRIPTION

COMPATIBLE CON: Scrambler Carburetion and EFI. In case you wanted to install on other models, it would be necessary to modify the original collectors.
MATERIALS: 2mm thick stainless steel.

SUMP GUARD
BOBBER

Ref: TMRT574



ITEM DESCRIPTION

COMPATIBLE WITH: Bobber and Bobber Black.
MATERIALS: 2mm thick stainless steel.

MATAL PARTS

CHAIN COVERS



MODEL:
Old generation

Ref: TMRT147

ITEM DESCRIPTION

COMPATIBLE WITH: Thruxton, Bonneville and Scrambler models before 2016.
MATERIALS: 360 polished stainless steel.



MODEL:
Bonneville

Ref: TMRT246

ITEM DESCRIPTION

COMPATIBLE WITH: Bonneville T100, Bonneville T120, Street Twin, Street Twin CUP and Street Scrambler.
MATERIALS: 360 polished stainless steel.



MODEL:
Thruxton

Ref: TMRT278

ITEM DESCRIPTION

COMPATIBLE WITH: Triumph Thruxton 1200, Thruxton 1200R and Speed Twin.
MATERIALS: 360 polished stainless steel.



MODEL:
Scrambler 1200

Ref: TMRT515

ITEM DESCRIPTION

COMPATIBLE WITH: Scrambler 1200, Scrambler 1200 XE
MATERIALS: 360 polished stainless steel.

METAL PARTS

PANTERA SPRINGS



Ref: TMRT275

ITEM DESCRIPTION

COMPATIBLE WITH: Triumph Thruxton EFI, Bonneville Carburation, Bonneville Injection, Bonneville SE, Bonneville Spirit, Scrambler 900 and Scrambler EFI.
MATERIALS: Iron.

COLOR



SILVER



JET BLACK

METAL PARTS

TAMARIT FOOTRESTS



Ref: TMRT247

ITEM DESCRIPTION

COMPATIBLE WITH: Neoclassical air-cooled triumphs such as Thruxton 900, Thruxton EFI, Bonneville 900, Bonneville EFI, Bonneville SE, Bonneville Spirit, Scrambler 900 and Scrambler EFI.
MATERIALS: Aluminum.

METAL PARTS

TITÁN TRIPLE TREE



Ref: TMRT249

ITEM DESCRIPTION

COMPATIBLE WITH: Bonneville Carburation, Bonneville Injection, Bonneville Spirit, Thruxton Injection, Scrambler Carburation and Scrambler Injection.
MATERIALS: Aluminum mechanized by numerical control. Material served raw, polishing or painting recommended.



METAL PARTS

HEADLIGHT GRILLE



OLD MODEL

Ref: TMRT166



ONE MODEL

Ref: TMRT185



STREET ONE MODEL

Ref: TMRT184



SCRAMBLER 1200

Ref: TMRT523

ITEM DESCRIPTION

OLD MODEL
COMPATIBLE WITH: Triumph Thruxton (2002 to 2016) and Bonneville (2001 to 2016)

ONE MODEL
COMPATIBLE WITH: Thruxton 1200, Thruxton 1200 R, Bonneville T100 and Bonneville T120, Speed Twin.

STREET ONE MODEL
COMPATIBLE WITH: Street Twin and Street Scrambler.

SCRAMBLER 1200 MODEL
COMPATIBLE WITH: Scrambler 1200, Scrambler 1200 XE.

MATERIALS: Black lacquered iron.

BRACKETS

REGULATION BRACKET



Ref: TMRT174

ITEM DESCRIPTION

COMPATIBLE WITH: Bonneville T100 Carb, Bonneville T100 EFI, Bonneville SE, Bonneville Spirit, Thruxton 900, Thruxton EFI, Scrambler 900 and Scrambler EFI.
MATERIALS: Black lacquered iron.

SOPORTE

TWO LINE HEADLIGHT BRACKET



Ref: TMRT442

ITEM DESCRIPTION

COMPATIBLE WITH: Triumph Bonneville Carb, Bonneville EFI, Bonneville SE, Bonneville Spirit, Thruxton Carb, Thruxton EFI, Scrambler Carb, Scrambler EFI.

MATERIALS: Black lacquered iron.

BRACKETS

IGNITION KEY RELOCATION BRACKET



Ref: TMRT178

ITEM DESCRIPTION

COMPATIBLE WITH: Triumph Thruxton 900, Thruxton EFI, Bonneville 900, Bonneville EFI, Bonneville SE and Bonneville Spirit.
MATERIALS: Stainless steel.

SOPORTE

FOUR LINE HEADLIGHT BRACKET



Ref: TMRT188

ITEM DESCRIPTION

COMPATIBLE WITH: Triumph Bonneville T100, Bonneville T120, Thruxton 1200, Street Twin, Street Scrambler, Street Cup, Scrambler 1200, Scrambler 1200 XE.

MATERIALS: Black lacquered iron.

BRACKETS

OG SPEEDO BRACKETS



EFI BRACKET
Ref: TMRT348



CARB BRACKET
Ref: TMRT349

ITEM DESCRIPTION

SOPORTE EFI
COMPATIBLE WITH: Bonneville T100 injection,
Bonneville Spirit, Bonneville SE, Thruxton 900 injection.

SOPORTE CARB
COMPATIBLE WITH: Bonneville T100 Carb. and
Thruxton 900 Carb.

MATERIALS: 3mm black lacquered iron.



SCRAMBLER CARB BRACKET
Ref: TMRT351



SCRAMBLER EFI BRACKET
Ref: TMRT350

ITEM DESCRIPTION

SCRAMBLER CARB BRACKET
COMPATIBLE WITH: Scrambler 900 carb.

SCRAMBLER EFI BRACKET
COMPATIBLE WITH: Scrambler 900 EFI.

MATERIALS: 3mm thick black lacquered iron.

BRACKETS

STREET TWIN SPEEDO BRACKET PACK



Ref: TMRT204

ITEM DESCRIPTION

COMPATIBLE WITH: Triumph Street Twin and Street
Twin CUP.

MATERIALS: Black lacquered iron.



BRACKETS

MOTOGADGET SPEEDO BRACKETS



MOTOGADGET CHRONOCLASSIC
Ref: TMRT354



MOTOGADGET PRO
Ref: TMRT352

ITEM DESCRIPTION

COMPATIBLE WITH: Bonneville SE, Bonneville Spirit, Bonneville T100 Carb,
Bonneville T100 Efi, Thruxton 900 Carb and Thruxton 900 Efi.

MATERIALS: 3mm thick black lacquered iron.



MOTOGADGET TINY, SPEEDSTER, OR VINTAGE
Ref: TMRT353



SIDE COVERS

DALUA SIDE COVER



Ref: TMRT84

ITEM DESCRIPTION

COMPATIBLE WITH: Triumph Thruxton 900, Thruxton EFI, Bonneville 900, Bonneville EFI, Bonneville SE, Bonneville Spirit, Scrambler 900 and Scrambler EFI.
MATERIALS: Fiberglass. Possibility of painting and lacquering.
SIDES: Left or right.

COLOR



UNPAINTED PAINTED

Ref: TMRT94

ITEM DESCRIPTION

COMPATIBLE WITH: Triumph Modern Classic models from 2016.
MATERIALS: Fiberglass. Possibility of painting and lacquering.
SIDES: Left or right.

COLOR



UNPAINTED PAINTED

SIDE COVERS

ENGINE BADGES



Ref: TMRT245

ITEM DESCRIPTION

COMPATIBLE WITH: Triumph Modern Classic models from 2016.
MATERIALS: 4 mm iron. Possibility of painting and lacquering.

MASKS

FRONTAL DAKAR

Ref: TMRT244



ITEM DESCRIPTION

COMPATIBLE WITH: Bonneville T100, Bonneville T120, Thruxton 1200 and Speed Twin.
MATERIALS: Fiberglass frontal and black lacquered iron brackets.

COLOR



UNPAINTED PAINTED

MASKS

FRONTAL ATLAS

Ref: TMRT522



ITEM DESCRIPTION

COMPATIBLE WITH: Bcrambler 1200, Scrambler 1200 XE.
MATERIALS: Fiberglass frontal and black lacquered iron brackets.

COLOR



UNPAINTED PAINTED

SIDE COVERS

DAKOTA SIDE COVER



Ref: TMRT266

ITEM DESCRIPTION

COMPATIBLE WITH: Triumph Thruxton 1200 and Thruxton 1200R.
MATERIALS: Fiberglass. Possibility of painting and lacquering.
SIDES: Left or right.

COLOR



UNPAINTED JET BLACK MATT BLACK C. GREEN CHRYSTAL WHITE SILVER ICE KOROSI RED DIABLO RED PURE WHITE

SIDE COVERS

GUILDFORD SIDE COVER



Ref: TMRT116

ITEM DESCRIPTION

COMPATIBLE CON: Thruxton 900, Thruxton EFI, Bonneville 900, Bonneville EFI, Bonneville SE, Bonneville Spirit, Scrambler 900 and Scrambler EFI.
MATERIALS: Fiberglass. Possibility of painting and lacquering.

COLOR



UNPAINTED JET BLACK

SIDE COVERS

MURALLA SIDE COVER



Ref: TMRT107

ITEM DESCRIPTION

COMPATIBLE CON: Bonneville T100, Bonneville T120, Street Twin and Street Scrambler (this one only for the left side).
MATERIALS: Fiberglass. Possibility of painting and lacquering.
SIDES: Left or right.

COLOR



UNPAINTED JET BLACK MATT BLACK MATT GRAPHITE A.M SILVER KOROSI RED CRANBERRY RED MATT IRONSTONE

SIDE COVERS

PARIS SIDE COVER



Ref: TMRT528

ITEM DESCRIPTION

COMPATIBLE CON: Speed Twin.
MATERIALS: Fiberglass. Possibility of painting and lacquering.
SIDES: Left or right.

COLOR



UNPAINTED JET BLACK SILVER ICE DIABLO RED

EXHAUSTS

CAT DELETE - X PIPE



Ref: TMRT274

ITEM DESCRIPTION

COMPATIBLE WITH: Bonneville T100, Bonneville T120, Street Twin, Street CUP, Street Scrambler, Thruxton 1200, Thruxton 1200 R, Bobber and Bobber Black.
MATERIALS: Stainless steel.

EXHAUSTS

BOLUDOS



ITEM DESCRIPTION

Ref: TMRT76

BOLUDOS THRUXTON
COMPATIBLE WITH: Triumph Thruxton before 2016.

Ref: TMRT75

BOLUDOS BONNEVILLE
COMPATIBLE WITH: Triumph Bonneville 900 and EFI.

MATERIALS: Stainless steel and aluminum.

EXHAUSTS

THOR



Ref: TMRT79

ITEM DESCRIPTION

COMPATIBLE WITH: Bonneville T100 and Bonneville T120.
MATERIALS: Stainless steel and aluminum.



Ref: TMRT485

ITEM DESCRIPTION

COMPATIBLE WITH: Thruxton 1200, Thruxton 1200R, Speed Twin.
MATERIALS: Stainless steel and aluminum.

EXHAUSTS

APOLO



Ref: TMRT80

ITEM DESCRIPTION

COMPATIBLE WITH: Thruxton 1200, Thruxton 1200 R and Speed Twin.
MATERIALS: Stainless steel and aluminum.

EXHAUSTS

BOCANEGRA

Ref: TMRT77



ITEM DESCRIPTION

COMPATIBLE WITH: Triumph Bonneville Carb, Bonneville EFI, Bonneville SE, Bonneville Spirit, Thruxton Carb, Thruxton EFI, Scrambler Carb y Scrambler EFI.
MATERIALS: Stainless steel.

EXHAUSTS

ODIN

Ref: TMRT251



ITEM DESCRIPTION

COMPATIBLE WITH: Street Twin, Street Cup.
MATERIALS: Stainless steel and aluminum.

EXHAUSTS

SPEEDSTER

Ref: TMRT439



ITEM DESCRIPTION

COMPATIBLE WITH: Bonneville Efi, Bonneville Carb, Bonneville Spirit, Bonneville CUP.
MATERIALS: Stainless steel.

EXHAUSTS

MINI BOCANEGRA

Ref: TMRT342



ITEM DESCRIPTION

COMPATIBLE WITH: Bonneville Efi, Bonneville Carb, Bonneville Spirit, Bonneville CUP, Thruxton Efi, Thruxton Carb.
MATERIALS: Stainless steel and aluminum.

EXHAUSTS

DAKAR

Ref: TMRT591



ITEM DESCRIPTION

COMPATIBLE WITH: Scrambler 1200, Scrambler 1200XE.
MATERIALS: Stainless steel and heavy duty fiberglass.

LEATHER LUGGAGE

FUEL TANK KNEE PADS



ITEM DESCRIPTION

Ref: TMRT240

OLD FUEL TANK KNEE PADS:
COMPATIBLE WITH: Triumph Bonneville Carb, Bonneville EFI, Bonneville SE, Bonneville Spirit, Thruxton Carb, Thruxton EFI, Scrambler Carb and Scrambler EFI.

Ref: TMRT242

NG FUEL TANK KNEE PADS:
COMPATIBLE WITH: Bonneville T100, Bonneville T120
MATERIALS: 100% leather

COLOR



BLACK



BROWN

LEATHER LUGGAGE

LEATHER BAG



ITEM DESCRIPTION

Ref: TMRT236

OLD LEATHER BAG:
COMPATIBLE WITH: Triumph Bonneville Carb, Bonneville EFI, Bonneville SE, Bonneville Spirit, Thruxton Carb, Thruxton EFI, Scrambler Carb and Scrambler EFI.

Ref: TMRT238

NG LEATHER BAG:
COMPATIBLE WITH: Bonneville T100, Bonneville T120
MATERIALS: 100% leather.

COLOR



BLACK



BROWN

LEATHER LUGGAGE

SHOES PROTECTOR



ITEM DESCRIPTION

MATERIALS: 100% Leather and elastic tape.

COLOR



BROWN

LEATHER LUGGAGE

PERNERA



Ref: TMRTAC30

ITEM DESCRIPTION

MATERIALES: Leather and woven.

COLOR



BROWN



CAMEL

Contact us also by WhatsApp!

+34 622 938 175

Make your **order**, request **estimates**.

Find out without obligation or simply ... say hello!

We will answer you right away!

C/ Vicente Blasco Ibañez 40.

03201

Elche, Alicante

info@tamaritmotorcycles.com

Phone: +34 96 636 38 32

Whatsapp: +34 672 35 89 85

[@tamaritmotorcycles](#)

TAMARIT PARTS

info@tamaritmotorcycles.com

+34 622 938 175

[@tamaritmotorcycles](https://www.instagram.com/tamaritmotorcycles)