

Making a Difference

THROUGH STUDENT-FOCUSED IT
& MS OFFICE® CERTIFICATION COURSEWARE

The
TestOut®
EXPERIENCE
for K12 Education

Hello.

We are a small, no-nonsense company that identifies more with “Main Street” than “Wall Street.” We are real people who want to do business with other real people. If you want red tape, hassles, and automated interactions, you will no doubt want to do business elsewhere. We believe that ed-tech companies don’t have to be cold or impersonal. We want to make a difference in the industry one customer at a time.

There are three things that make us truly unique in our industry:

- **We help you learn through experience-based training**
- **We use advanced simulations**
- **We are customer-centric**

Thousands of schools around the world have witnessed the positive impact TestOut training has had on them and their students.

OUR MISSION

We make a difference in a person’s life through education using breakthrough technology

WE ARE

TestOut[®]





The World's Most Advanced Learning Platform for Real-World Experience

LabSim is TestOut's learning platform. It delivers our certifications and courses, including our best-of-class IT simulations. It also provides tools for educators to manage and assess student learning. The LabSim courses keep students engaged and allow them to monitor their own progress. LabSim is a flexible and cost-effective solution for IT education.

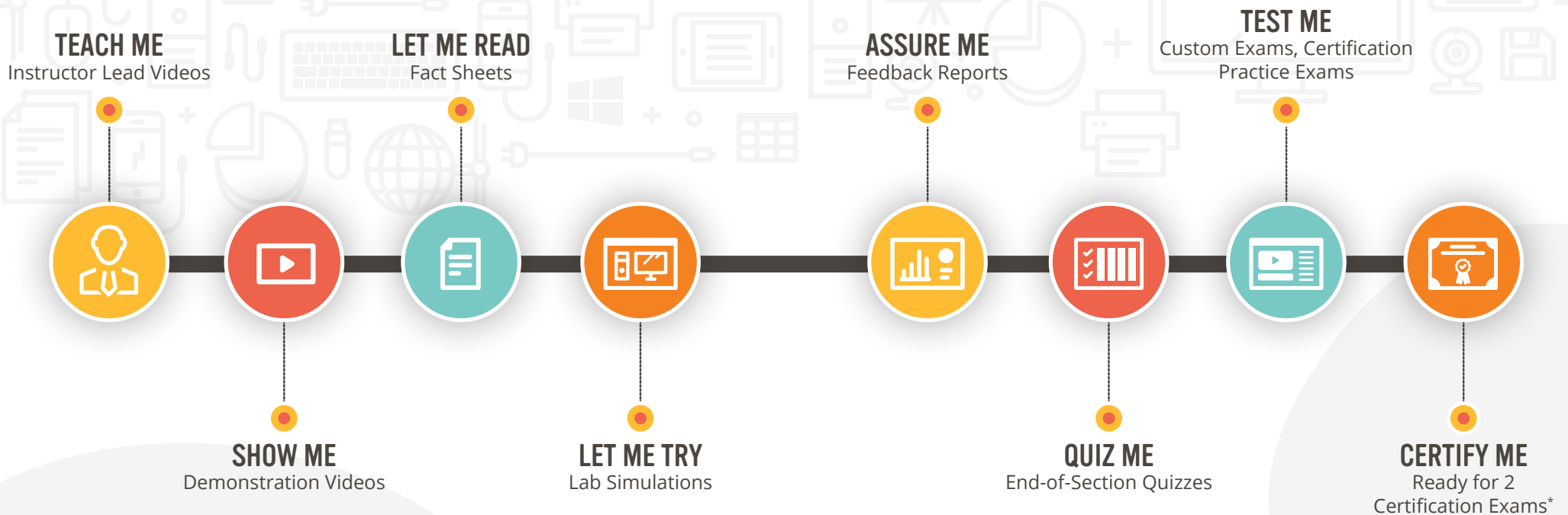
With LabSim, students are able to gain practical knowledge and practice real-world skills any time and anywhere. All they need is Internet access on a supported device.

KEY FEATURES:

- Simulation Labs
- Expert Instruction
- Interactive Video Controls
- Text Lessons
- Section Quizzes and Exams
- Certification Practice Exams
- Performance Reports
- Student Reports
- Custom Assessment
- Class Management
- Data Export
- LMS Integration
- Auto-grading – Including an option for administration to view reporting

Visit TestOut.com/LabSim to learn more.

8 Learning Components For Helping Your Students Build Competency, Get Certified, and Obtain Employment



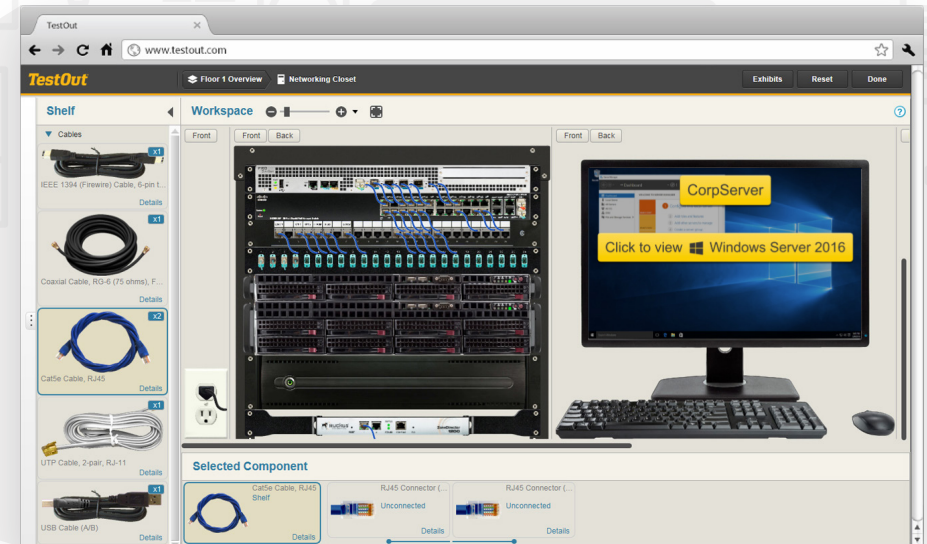
The LabSim Learning Method

After nearly 30 years of delivering IT certification training to industry and academic, we've developed a tried and proven learning methodology that best prepares students for IT certifications and career success and can be adapted to **traditional, hybrid, and online learning** formats.



* The 100% Performance-based TestOut Pro Certification & the associated Microsoft, CompTIA, Cisco, or EC Council Certification Exam(s)

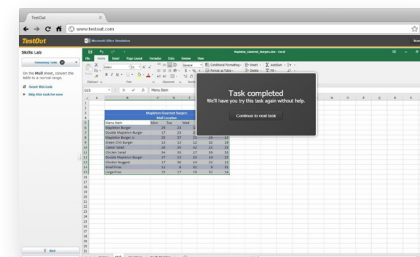
Integrated hardware and software labs enable students to apply their knowledge in real-world scenarios



Our advanced labs simulate over \$100,000 worth of hardware, software, and networking equipment. Students can practice configuring hardware, installing drivers, managing operating systems, and configuring network devices—all within their browser.

Students Have 24/7 Access

Our simulations provide the best way for students to practice real-world IT skills. Using integrated hardware and OS simulations, students face tasks that they will encounter on the job and are given immediate feedback to help them improve quickly.





TestOut OFFICE PRO

CERTIFICATION TRAINING COURSEWARE

TestOut's Office Pro course provides a highly effective all-in-one learning solution for Microsoft Office applications, including Word, Excel, PowerPoint, Access, and Outlook. Our simulated labs are designed to help students both acquire and retain the skills needed to become proficient in using Office applications. TestOut has developed a methodology for teaching Office applications that empowers students to develop skills through our three levels of practice labs.

- **Skill labs:** perform a task
- **Challenge labs:** build mastery
- **Applied labs:** prove competency

PREPARES FOR:



**TestOut Office Pro
Certification Exam**
100% Performance-Based



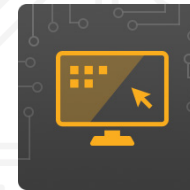
**Microsoft Office Specialist
Certification Exams**
(Word, Excel, PowerPoint, Access, Outlook)

COURSE TOPICS

- Online Essentials
- Computer Essentials
- Common Office Features
- Microsoft Word
- Microsoft Excel
- Microsoft PowerPoint
- Microsoft Access
- Microsoft Outlook
- TestOut Office Pro Practice Exams
- MOS 2019 Practice Exams

COURSE SPECS

- 190** LabSim Simulations
- 236** Video Lessons
- 169** Fact Sheets
- 32** Exams
- 91** Hours to Complete



TestOut IT FUNDAMENTALS PRO

CERTIFICATION TRAINING COURSEWARE

TestOut's IT Fundamentals Pro course is designed for students who are interested in information technology or computer science, but have limited technical knowledge. This course helps students determine which path to follow while they learn foundational concepts related to computer hardware and software, networking, databases, programming, information systems, and data security. The course includes several hands-on labs to reinforce the concepts students are learning.

PREPARES FOR:



**TestOut IT Fundamentals Pro
Certification Exam**
100% Performance-Based



**CompTIA IT Fundamentals
(ITF) Certification Exam**
(FC0-U61)

THIS COURSE IS A GREAT STARTING POINT IN PREPARING FOR THE FOLLOWING ADDITIONAL CERTIFICATIONS:

- TestOut Office Pro
- TestOut PC Pro
- TestOut Network Pro
- Microsoft Office Specialist (MOS)
- CompTIA A+

COURSE TOPICS

- Introduction to Computers
- Networking
- Databases & Programming
- Information Systems & Security
- CompTIA IT Fundamentals (FC0-U61) Practice Exams

COURSE SPECS

- 24** LabSim Simulations
- 100** Video Lessons
- 24** Demonstrations
- 94** Fact Sheets
- 35** Exams
- 30** Hours to Complete

V2



**IT FUNDAMENTALS PRO V.2
COMING SUMMER 2020**
More simulations, demos, and 100+ labs



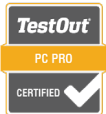
TestOut PC PRO

CERTIFICATION TRAINING COURSEWARE

TestOut's PC Pro uses multiple learning formats to help students learn how to install, manage, and secure computer hardware as well as master home and corporate OS environments. Students learn how to build, configure, and maintain a PC, as well as the basics of networking and security.

TestOut uses its advanced simulation technology, to replicate more than \$100,000 of equipment in multiple environments, giving your students hands-on experience without having to wait for their turn in a physical lab.

PREPARES FOR:



TestOut PC Pro Certification Exam

100% Performance-Based



CompTIA A+ Certification Exams

(220-1001 & 220-1002)



Microsoft Technical Associate Certification Exam

(Exam 98-349)

TARGET CAREER:



Desktop Support Specialist

Salary Range: \$36,000 - \$69,000



IT Support Specialist

Salary Range: \$35,000 - \$71,000



Help Desk Technician

Salary Range: \$12 - \$23 Hourly

COURSE TOPICS

- Computing Overview
- PC Technician Responsibilities
- System Components
- Peripheral Devices
- Storage
- Networking
- Wireless Networking
- Printing
- Mobile Devices
- System Implementation
- File Management
- System Management
- Security
- Capstone Exercises
- PC Pro Certification Practice Exams
- CompTIA A+ 220-1001 Core 1 Practice Exams

COURSE SPECS

- 117** LabSim Simulations
- 142** Video Lessons
- 144** Demonstrations
- 189** Fact Sheets
- 132** Exams
- 105** Hours to Complete

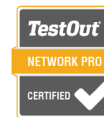


TestOut NETWORK PRO

CERTIFICATION TRAINING COURSEWARE

TestOut's Network Pro course helps students gain the knowledge and skills they need to install, configure, and maintain a network for a small business. Those concepts are then put into practice in 88 interactive lab simulations that challenge students with scenarios they will encounter on the job as a network administrator or an IT support specialist.

PREPARES FOR:



TestOut Network Pro Certification Exam

100% Performance-Based



CompTIA Network+ Certification Exam

(N10-007)



Microsoft Technical Associate Certification Exam

(Exam 98-366)

TARGET CAREER:



IT Support Specialist

Salary Range: \$35,000 - \$71,000



Network Administrator

Salary Range: \$41,000 - \$81,000

COURSE TOPICS

- Networking Basics
- Cables & Connectors
- Networking Devices
- Ethernet
- IP Configuration
- Switch Management
- Routing
- Firewalls
- Network Customization
- Wireless Networking
- Wide Area Networks
- Network Policies & Procedures
- Network Security
- Network Hardening
- Network Management & Optimization
- Network Pro Practice Exams
- Network + Practice Exams

COURSE SPECS

- 88** LabSim Simulations
- 130** Video Lessons
- 78** Demonstrations
- 136** Fact Sheets
- 99** Exams
- 73** Hours to Complete



TestOut SECURITY PRO

CERTIFICATION TRAINING COURSEWARE

TestOut's Security Pro course teaches students how to secure a corporate network using a layered security model and how to secure a small business network using layered security framework concepts.

TestOut's Security Pro is CompTIA Approved Quality Content and verified to cover 100 percent of the objectives for the CompTIA's Security+ (SY0-501) certification exam.

PREPARES FOR:



**TestOut Security Pro
Certification Exam**

100% Performance-Based



**CompTIA Security+
Certification Exam**

(SY0-501)



**Microsoft Technical Associate
Certification Exam**

(Exam 98-367)

TARGET CAREER:



IT Systems Administrator

Salary Range: \$44,000 — \$87,000



Security Specialist

Salary Range: \$49,000 — \$114,000

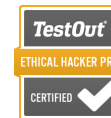


TestOut ETHICAL HACKER PRO

CERTIFICATION TRAINING COURSEWARE

TestOut's Ethical Hacker Pro (EHP) focuses on the basics of Penetration Testing. It also helps students prepare for network attack strategies and common countermeasures. EHP prepares students to use various penetration testing tools to analyze networks for vulnerabilities. Knowledge of these vulnerabilities also helps students to understand how to counter these vulnerabilities and improve network security.

PREPARES FOR:



**TestOut Ethical Hacker Pro
Certification Exam**

100% Performance-Based



**EC-Council Certified Ethical Hacker
V10 Certification Exam**

TARGET CAREER:



Penetration Tester

Salary Range: \$56,000 — \$131,000



Information Security Specialist

Salary Range: \$49,000 — \$114,000



Security Engineer

Salary Range: \$59,000 — \$128,000

COURSE TOPICS

- Intro to Ethical Hacking & Penetration Testing
- Social Engineering & Physical Security
- Reconnaissance
- Scanning
- Enumeration
- Analyze Vulnerabilities
- System Hacking
- Malware
- Sniffers, Session Hijacking & Denial of Service
- IDS, Firewalls & Honeypots
- Web Servers, Web Applications & SQL Injections
- Wi-Fi, Bluetooth & Mobile Devices
- Cloud Computing & Internet of Things
- Cryptography
- TestOut Ethical Hacker Pro Practice Exams
- EC Council Certified Ethical Hacker- Practice Exams

COURSE SPECS

- 65** LabSim Simulations
- 88** Video Lessons
- 79** Demonstrations
- 96** Fact Sheets
- 63** Exams
- 69** Hours to Complete

COURSE TOPICS

- Security Basics
- Policies, Procedures & Awareness
- Physical
- Perimeter
- Network
- Host
- Application
- Data
- Security Pro Practice Exams
- CompTIA Security + Practice Exams

COURSE SPECS

- 78** LabSim Simulations
- 142** Video Lessons
- 109** Demonstrations
- 135** Fact Sheets
- 106** Exams
- 82** Hours to Complete



TestOut LINUX PRO

CERTIFICATION TRAINING COURSEWARE

TestOut Linux Pro provides students with valuable experience in command line interface, installation and localization, disk and system file management, security, group and user management, and boot loaders. Students solve real-world problems, including managing hardware and software components, managing networks, managing users and file systems, and setting up new systems.

PREPARES FOR:



**TestOut Linux Pro
Certification Exam**

100% Performance-Based



**CompTIA Linux+
Certification Exam**

(XK0-004)

TARGET CAREER:



Linux Administrator

Salary Range: \$46,000 - \$99,000



Network Technician

Salary Range: \$51,000 - \$110,000



Systems Administrator

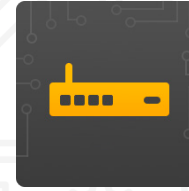
Salary Range: \$44,000 - \$87,000

COURSE TOPICS

- Linux Overview
- Using Linux
- Installation and Localizations
- Boot and Shutdown
- Graphical User Interfaces and Desktops
- Software Installation
- Users and Groups
- Disk and File System Management
- Hardware Installation
- Processes and System Services
- System monitoring
- Networking
- Cloud and Virtualization
- Scripting and Automation
- Security
- Linux Pro Practice Exams
- Linux+ Practice Exams

COURSE SPECS

- 98** LabSim Simulations
- 123** Video Lessons
- 108** Demonstrations
- 126** Fact Sheets
- 860** Practice Questions
- 65** Hours to Complete

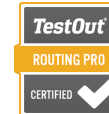


TestOut ROUTING AND SWITCHING

CERTIFICATION TRAINING COURSEWARE

TestOut's Routing and Switching Pro builds a student's ability to use Cisco networking devices. Students will gain experience with routing by performing tasks such as IP routing implementation, OSPF routing configuration, access control list configuration, and EIGRP configuration. Students practice with switch setup and configurations, switch interface configuration, VLAN configuration, TCP/IP configuration, spanning tree configuration, and interVLAN routing.

PREPARES FOR:



**TestOut Routing Pro and
TestOut Switching Pro
Certification Exam**

100% Performance-Based



**Cisco ICND1 and ICND2
Certification Exam**

(100-105) and (200-105)

TARGET CAREER:



Network Administrator

Salary Range: \$39,000 - \$81,000



Systems Engineer

Salary Range: \$48,000 - \$108,000



Security Specialist

Salary Range: \$41,000 - \$108,000



**ROUTING AND SWITCHING PRO
UPDATE COMING SUMMER 2020**

Aligned with new CISCO CCNA certification exam

COURSE TOPICS

- ICND1 introduction
- Networking concepts
- IPV4 and IPV6 Addressing
- Cisco Device Basics
- LAN switching
- IP Routing Technologies and IP Services
- Device Configuration and Management
- ICND2 introduction
- Advanced switching and routing
- Wide area networks
- IPV4 and IPV6 Routing protocols
- Network Management using Cisco Devices
- Switching Pro Practice Exams
- Routing Pro Practice Exams
- Cisco 100-105 ICND1 Practice Exams
- Cisco 200-105 ICND2 Practice Exams

COURSE SPECS

- 76** LabSim Simulations
- 133** Video Lessons
- 78** Demonstrations
- 185** Fact Sheets
- 1820** Practice Questions
- 54** Hours to Complete

TestOut

ADDITIONAL COURSEWARE



TestOut
CLIENT PRO



TestOut
SERVER PRO 2016: INSTALL & STORAGE



TestOut
SERVER PRO 2016: NETWORKING



TestOut
SERVER PRO 2016: IDENTITY

10
POINT
TOUCH
SOLUTIONS

The Support & Solutions You Need

Our Customer Success Team onboards and supports you using Ten-Point Touch Solutions.

1

Onboarding
Interview &
Planning

2

Course &
Assessment
Design

3

Textbook
Mapping Guides

4

LMS
Integration

5

One-on-One
& Group
Onboarding

6

Online, Hybrid,
& Traditional
Classroom Tips

7

Student Data
Analysis

8

Lesson Plans,
Course Outlines,
& Classroom
Activities

9

Video/Text
Tutorials for
Educators &
Students

10

Instructor
Resource
Center

And Many
More

These services
are always
complimentary.



Without Care, It's Just Courseware.

We are a small but mighty company filled with a hundred passionate people who believe in making a difference in the world through education using breakthrough technology. Second only to LabSim is our incredible service, support, and resources for your classroom and program success. Because no two schools are alike, we work closely with you to create a customized implementation plan.

Go to TestOut.com/Courses to learn more about each of these additional courses



Give them more than just a grade when they leave your class.

Certifications are supposed to prove to employers that people have desired knowledge and skills. But since most certifications only measure knowledge, how do you prove that you also have skills? This is where we come in.

To assess skills, you need more than multiple-choice exams. TestOut Pro exams use the most advanced simulation technology to measure individuals' ability to perform real-world IT tasks. All of our exams are scientifically analyzed and validated. No one does a better job assessing IT skills than we do through our TestOut Pro certifications. Our courses include a voucher for each student to take the associated TestOut Pro certification.



We are confident in these Pro Certified individuals that we will back them up with a **\$1,000 Skills Guarantee** for employers.

Learn more at TestOut.com/SkillsGuarantee.com

The TestOut Pro certifications really gave our program a boost. I decided to integrate the exam as the end-of-year goal for the students, and that's when my program really took off.

— MARK BRENNER

Pathways Instructor, Indio High School

Visit TestOut.com/ProCertifications to learn more.

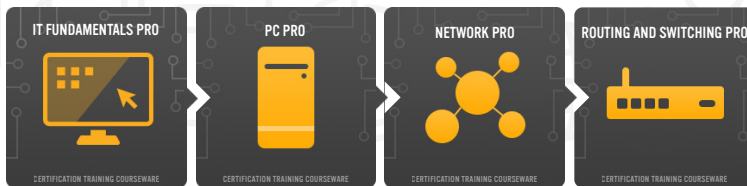
TestOut

IT PATHWAYS

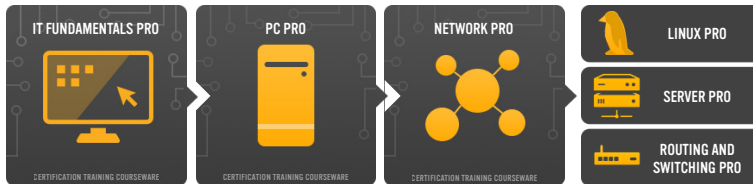
CYBERSECURITY PATH (CYBERPATRIOT)



NETWORK PATH



SYSTEM ADMIN PATH



**MOS CERTIFICATION
OFFICE PRO**

IT offers numerous opportunities for growth, but it can be tough to decide which path to follow. Along these pathways, each certification builds upon the one before it, to help your students move ahead. But just because we've mapped out these pathways doesn't mean you need to teach TestOut certifications in this order. Jump in at whatever point makes the most sense for your classes and school.

TESTOUT BENEFITS

TEACHER

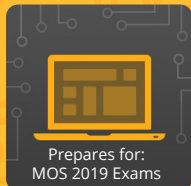
- Free teacher access
- Free teacher training
- Lesson plans
- PowerPoint slides
- LMS integration
- Mapping to state standards
- Mapping to industry certifications and content
- Timeline mapping for course objectives
- Custom exam builder
- Custom reports
 - Track student progress
 - Time in resources
 - Scores
 - Attempts

STUDENT

- Video lessons with read-along interactive script
- Automatic feedback
- End of section quizzes
- Self-remediation
- Fact sheets
- Certification practice exam material
- Interactive lab environment
- Open-ended lab sandbox on select courses
- Auto-scoring
- TestOut Pro certification exam voucher
- Skills Guarantee
- Online – use anywhere
- Self-contained – additional materials are not needed

TESTOUT COURSEWARE LIST

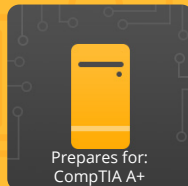
TESTOUT OFFICE PRO



TESTOUT IT FUNDAMENTALS PRO



TESTOUT PC PRO



TESTOUT LINUX PRO



TESTOUT NETWORK PRO



TESTOUT SECURITY PRO



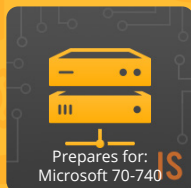
TESTOUT ETHICAL HACKER PRO



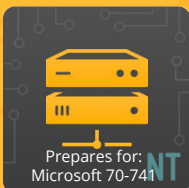
TESTOUT CLIENT PRO



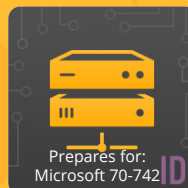
TESTOUT SERVER PRO 2016: INSTALL AND STORAGE



TESTOUT SERVER PRO 2016: NETWORKING



TESTOUT SERVER PRO 2016: IDENTITY



TESTOUT ROUTING AND SWITCHING PRO

