

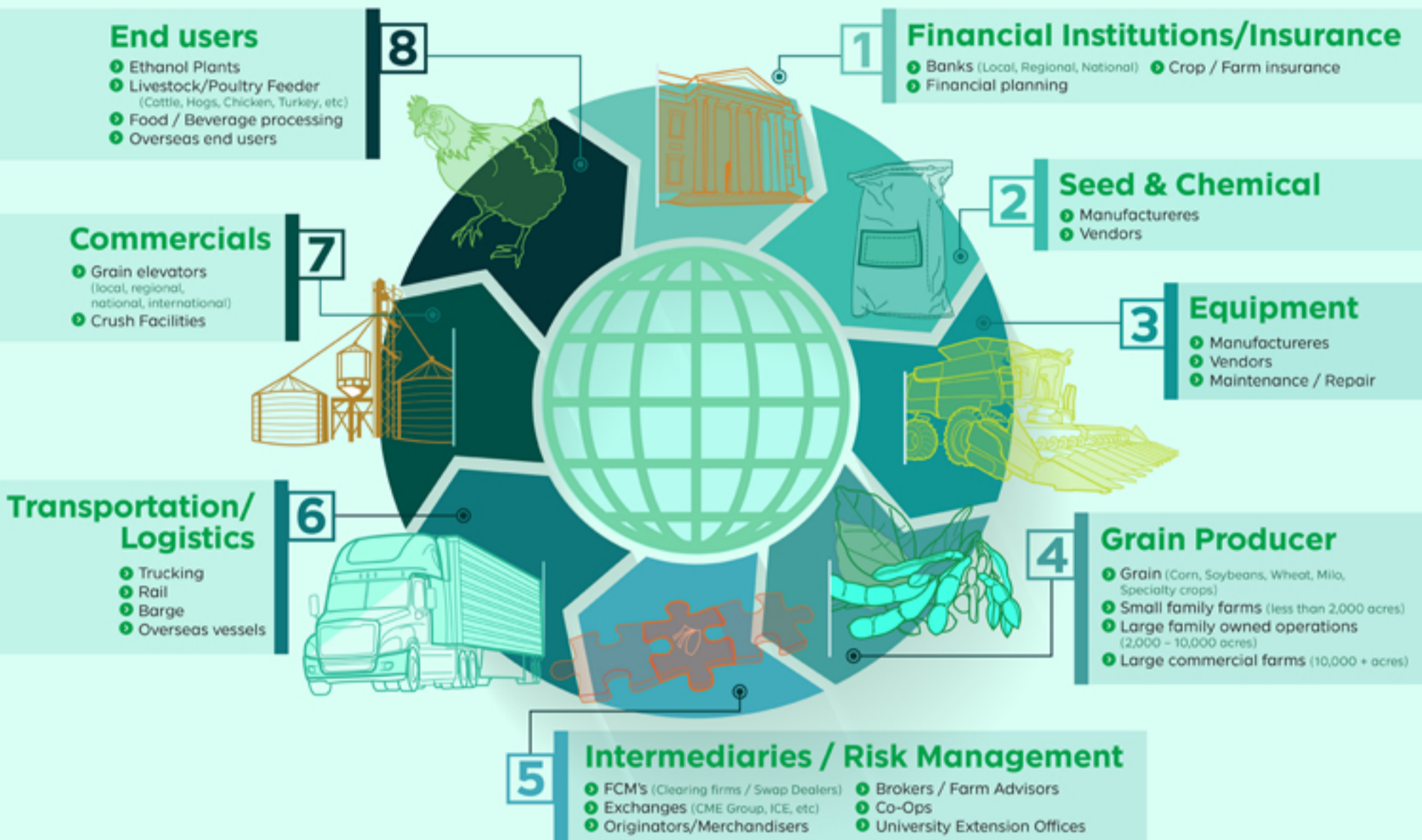
# What it takes to FEED the World

As of 2022, there are 7.9 billion people in the world, and **by 2050 the world population is expected to approach 10 billion.**

**What does it take to feed all of these people today, and how on Earth will we manage to feed 25% more people over the next 30 years?**

## Did you know that there are roughly 19.7 million jobs related to agriculture and food sectors?

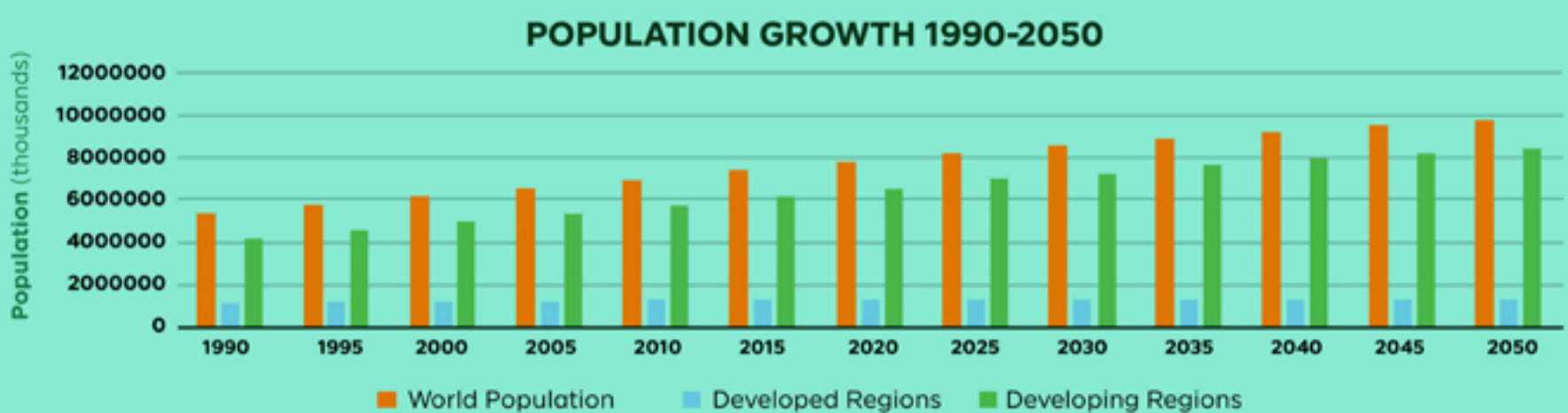
We breakdown 8 agriculture sectors and show how they work together to feed the world:



## How Will Population Growth Globally Impact The Production of Food?

Today: 7.9 billion | 2050: 9.7 billion  
32.8%  $\uparrow$  = **DOUBLE** the food production

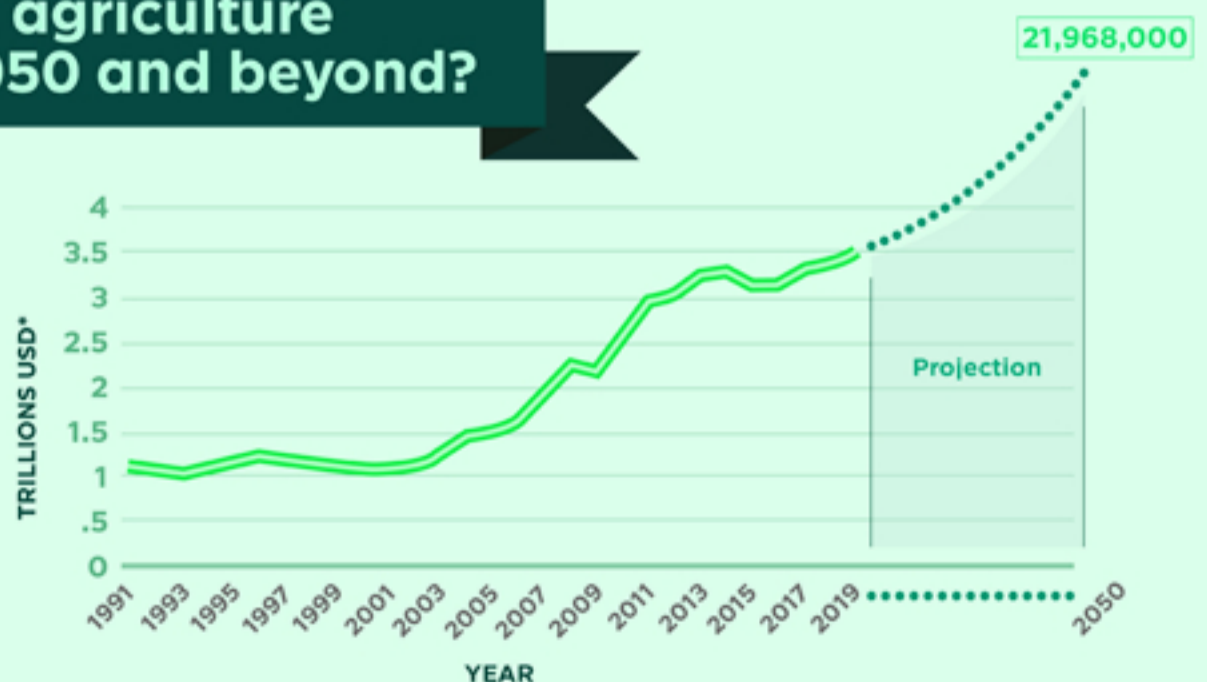
Developing regions of the world are the main drivers of population increase **and will continue to put massive pressure on our current agriculture system** to produce increased amounts of protein.



## What will the demand on agriculture production look like in 2050 and beyond?

# 60-70%

By 2050, the population in developing countries will be roughly 10 billion. The general consensus is that global agricultural production will be **increased by about 60-70 percent from the current levels** to meet the increased food demand in 2050 and beyond.



Whether you're a producer, end-user, commercial operator, RCM AG Services helps protect revenues and control costs through its suite of hedging tools and network of buyer/sellers —  
**Contact us today to speak with an Ag specialist**

[rcmagservices.com](http://rcmagservices.com)

888-875-2110

[agsupport@rcmam.com](mailto:agsupport@rcmam.com)