

spidertracks



USER MANUAL

# Spider X Keypad

# Safety & Regulatory Information



Please read this guide carefully. It is important that all installation requirements are followed.

Installation must be completed by a suitably qualified person (check your local regulatory requirements).

Refer all servicing to Spidertracks qualified service personnel. Servicing is required when the apparatus has been damaged in any way. Changes or modifications not expressly approved by the party responsible for compliance could void the user's authority to operate the equipment.

This equipment generates, uses, and can radiate radio frequency energy and, if not installed and used in accordance with the instruction manual, may cause harmful interference to radio communications. Operation of this equipment in a residential area is likely to cause harmful interference in which case the user will be required to correct the interference at his own expense.

# Contents



<b>1. Getting Started</b>	<b>4</b>
1.1 Overview	4
1.2 What's in the box?	4
<b>2. Install</b>	<b>5</b>
2.1 Connect	5
2.2 Locate	5
2.3 Mount	6
<b>3. Use</b>	<b>7</b>
3.1 Status Lights	7
3.2 Mark	8
3.3 Watch	8
3.4 SOS	8
<b>4. Help</b>	<b>9</b>
4.1 Contact	9
4.2 Warranty	10
4.3 Disposal and Returns	10
<b>5. Specifications</b>	<b>11</b>

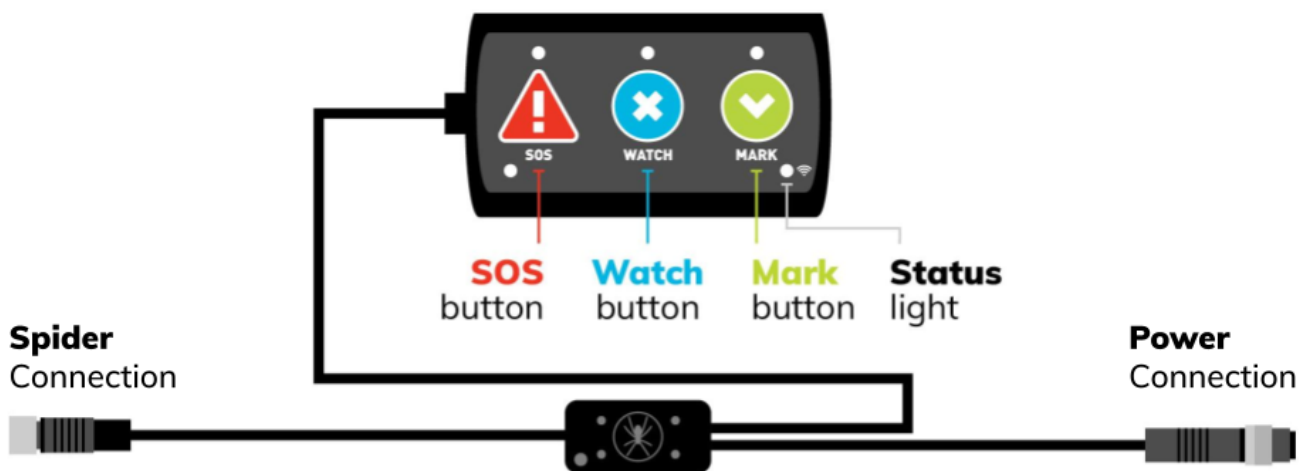
# 1 Getting Started



## 1.1 Overview

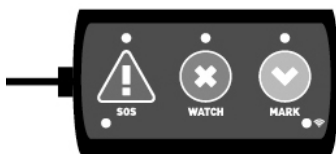
The Spider X Keypad has the following key features:

- **SOS** - Button to send an SOS alert.
- **Mark** - Button to send preset mark notifications.
- **Watch** - Button to activate the Watch feature.
- **Status** - LED to indicate the status of the Spider.

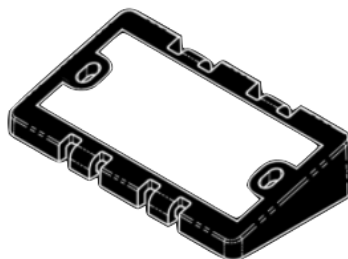


## 1.2 What's in the box?

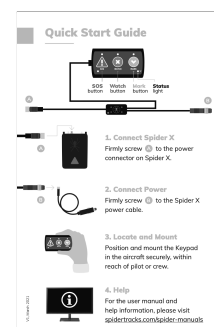
The following items are included in the box:



Spider X Keypad



Bracket with adhesive



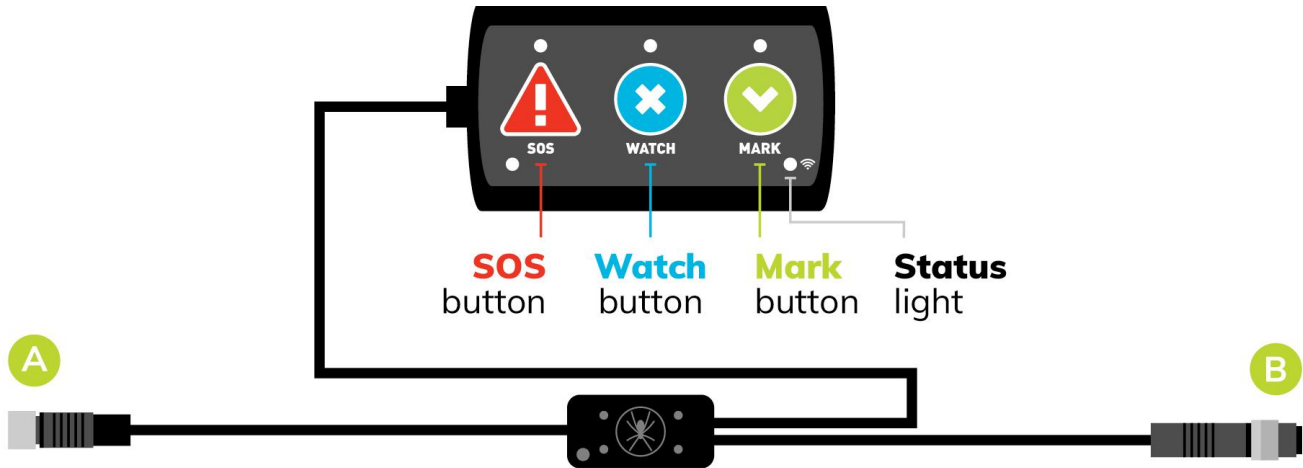
Quick Start Guide

## 2 Install



### 2.1 Connect

The keypad is fitted in line with the Spider X power lead. For each end, insert the mating cable connector and screw finger tight.



A. Connect to Spider X power input.

B. Connect to Spider X power lead (2000PWR102 or 2000PWR105).



### 2.2 Locate

Find a location for the Keypad where the pilot or crew are able to reach the buttons during flight. The detachable bracket can be fitted in two orientations, where the keypad either faces up or faces down.



Facing down



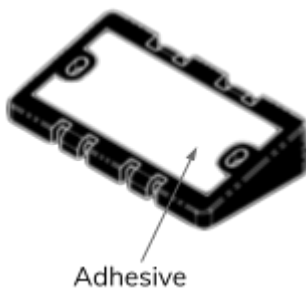
Facing up

## 2.3 Mount

The keypad is supplied with a detachable mounting bracket. Choose one of the mounting options below.

### Adhesive tape

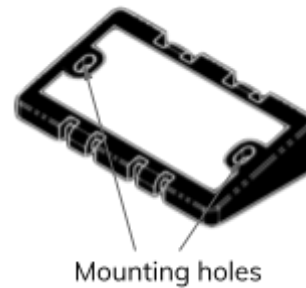
- A. The adhesive tape can only be applied once.
- B. The surface under the bracket must be flat, dry and free of dust or oil.
- C. Remove the adhesive backing, place the bracket firmly in place, ensuring all sides have made firm contact with the surface.
- D. Final strength is achieved after 72 hours at 20 °C (68°F).



### Fasteners

The keypad has two mounting holes suitable for M3 fasteners or similar.

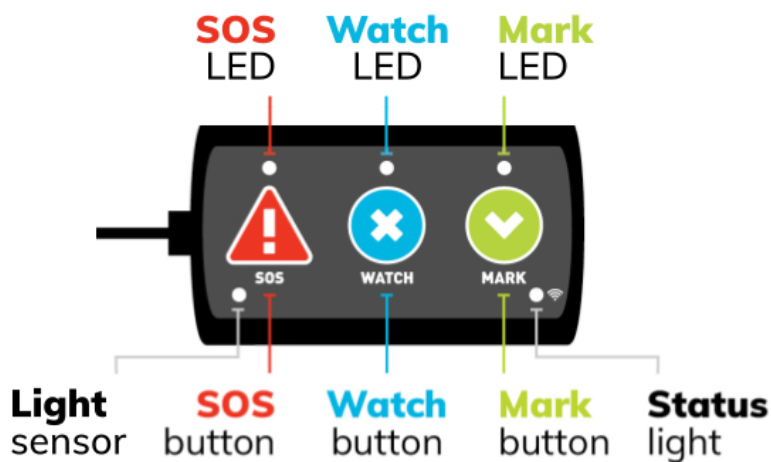
\*Fasteners not supplied.



# 3 Use



## 3.1 Status Lights



### Status LED

	Off	No power
	Amber flashing	Disconnected or unable to communicate with Spider
	Amber	No satellite connection, can take up to 5 minutes to connect
	Green	Satellite connection OK

### SOS LED

	Off	SOS inactive
	Red flashing	Spider sending SOS
	Red	SOS active

### Watch LED

	Off	Watch inactive
	Green flashing	Spider sending Watch on or Watch off
	Green	Watch active

### Mark LED

	Green flashing	Mark button pressed
	Green toggling	Mark button held, release to set brightness

## 3.2 Mark

The Mark button allows the operator to send up to four preset messages to contacts within your organisation. See <https://support.spidertracks.com/> for instructions on setting up notifications.

Press Mark the number of times for the message required e.g. Three times for 'Mark 3 message'. To confirm acknowledgement, the Mark LED will flash the number of times the Mark button is pressed e.g. Three times for 'Mark 3 message'.

Holding the Mark button will cycle through the different levels of LED brightness. Once the desired brightness is reached, releasing the Mark button will set it.

## 3.3 Watch

The Watch button allows the operator to turn on and off Watch, the active tracking feature that 'watches' over you as you fly and generates an alert if there is a prolonged disconnection between the Spider and the network. See <https://support.spidertracks.com/> for instructions on using Watch.

## 3.4 SOS

The SOS button sends an alert to contacts in your organisation. See <https://support.spidertracks.com/> for instructions on setting up your emergency contacts. Pressing the SOS button will activate SOS, the LED will flash until the SOS has been sent by the Spider, at which time the LED will turn solid red.





## 4.1 Contact

For service and support:

Support Documentation: <https://support.spidertracks.com>

Email: [support@spidertracks.com](mailto:support@spidertracks.com)

Phone:



Australia

+61 1800 461 776



Canada

+1 800 491 2895



Mexico

+52 55 4169 3149



New Zealand

+64 9 222 0016



South Africa

+27 87 550 3970



United Kingdom

+44 20033 31519



United States

+1 800 491 2895

Address:

Spidertracks  
205/150 Karangahape Road  
Auckland, 1010  
New Zealand



## 4.2 Warranty

The Spider X Keypad comes with a 12 month warranty from date of purchase. You must [notify Spidertracks](#) as soon as a defect is discovered. If the device needs to be returned for repair, a return merchandise authorisation (RMA) will be issued. Spidertracks will replace your Spider X Keypad with a new or refurbished Spider X Keypad. You are responsible for all return shipping costs of the device under RMA. Any attempt to repair or open the device, water damage, or physical damage beyond normal wear and tear will void the warranty.

### Australia

Our goods and services come with guarantees that cannot be excluded under the Australian Consumer Law. For major failures with the service, you are entitled:

- to cancel your service contract with us; and
- to a refund for the unused portion, or to compensation for its reduced value.

You are also entitled to choose a refund or replacement for major failures with goods. If a failure with the goods or a service does not amount to a major failure, you are entitled to have the failure rectified in a reasonable time. If this is not done you are entitled to a refund for the goods and to cancel the contract for the service and obtain a refund of any unused portion. You are also entitled to be compensated for any other reasonably foreseeable loss or damage from a failure in the goods or service.

## 4.3 Disposal and Returns

Spidertracks is committed to reducing waste.

### EU

[Contact](#) our support team on how to return or dispose of your device.

The European Union (EU) has developed the WEEE (Waste Electrical and Electronic Equipment) Directive to ensure that systems for collection, treatment and recycling of electronic waste will be in place throughout the European Union.

This directive requires manufacturers of electrical and electronic equipment who sell into EU countries to encourage consumers of such equipment to appropriately recycle the equipment at the end of their lifespan.

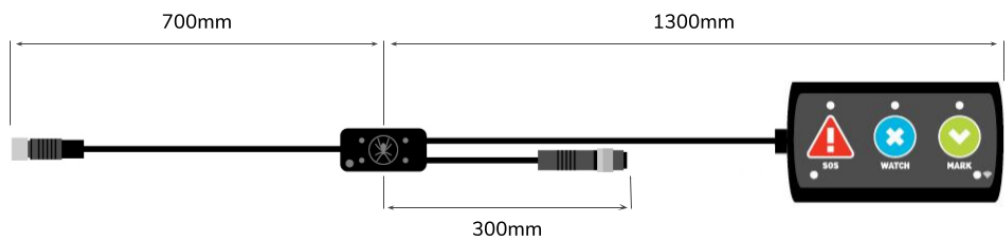
### Global

[Contact](#) our support team on how to return or dispose of your device.

# 5 Specifications



Part number	8000SX102
Keypad Dimensions	70 mm x 42 mm x 25 mm (2.76" x 1.65" x 1.18")
Weight	300 g (10.6 Oz)
Length	2 m (6' 6.75")



## Interfaces

M8 4-pin	Male - connection only to Spider X Power lead (2000PWR102 or 2000PWR105)
M8 4-pin	Female - connection only to Spider X (6000SX)

## Power

Voltage	Class 1 energy source 14 VDC $\pm$ 15% or 28 VDC $\pm$ 15%
Consumption	100mW nominal (3A. max)
Protection	Spider X power cable includes 3A normal (fast) blow fuse. Only use approved spare parts.

## Environmental

Operating temperature	-30°C to +60°C (-22°F to 140°F)
Storage temperature	-40°C to +85°C (-40°F to 185°F)
Operation and storage	Indoor, not water resistant

Regulatory	CE, FCC, IC, RCM
------------	------------------