

THE SPRAY FOAM ROOFING CHEAT SHEET



West Roofing Systems, Inc.

- WHAT IS SPRAY FOAM ROOFING?
- HOW MUCH DOES IT COST?
- WHAT PROBLEMS DOES IT HAVE?
- WHAT ARE THE BENEFITS?
- PHOTOS/VIDEOS

WHAT IS IT?

Spray Polyurethane Foam is a material that's sprayed as a liquid and expands into a foam, creating a fully-adhered and monolithic layer of insulation across a roof.



The chemicals, A (polyol/resin) & B (isocyanate), are pumped from separate containers through heated, high-pressure hoses to an internal mixing spray gun.

The technology has been around since the 1960s.



A thin application of silicone coating is applied over spray foam to protect the roof from UV rays.

Granules are sometimes broadcasted into the coating for added strength and stability.



A common question that gets asked, "How much does spray foam cost?"

THE COSTS OF SPRAY FOAM ROOFING



Spray foam roofing usually costs **\$4 - \$7 per square foot**. The price can go up or down depending on a few factors, such as....

SIZE OF YOUR ROOF

Economies of scale usually start around 20,000 sq. ft.

The larger your roof is, the more cost-effective per sq. ft. the job will be.



AMOUNT OF TEAR-OFF

If your roof has saturated insulation, these will be removed before spray foam is applied.

The more tear-off, the more the job costs.

LENGTH OF DESIRED WARRANTY

Spray foam roofs come in 5 - 20 year warranties.

The longer the warranty, the more coating that needs to be used to protect the roof.



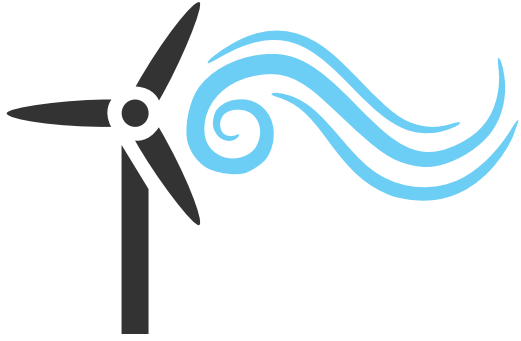
ACCESS TO ROOF

The higher your building is and the more levels it has, the more difficult it is to apply spray foam.

Nothing is perfect, what problems do spray foam roofs have?

PROBLEMS WITH SPRAY FOAM ROOFING

OVERSPRAY



Spray foam is very light and can be moved with the wind.

Spray foam can end up on nearby cars, windows, etc. if precautions aren't taken.

LIMITED INSTALLATION WINDOW

Spray foam needs 50 degrees and rising temperature to be applied correctly.

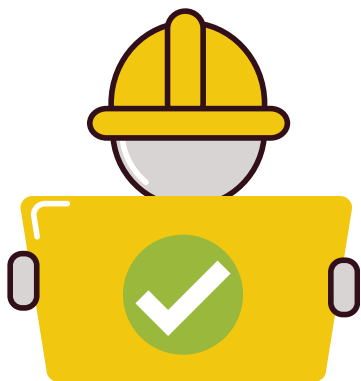
There needs to be little to no wind, and no rain for spray foam to be applied.



FINDING THE RIGHT CONTRACTOR

It may be difficult to find a contractor with decades of experience.

It might be hard to find a contractor with SPFA-certified installers.



NOT AS RESISTANT TO PUNCTURING

Spray foam can be walked on, but cracks can happen when sharp or heavy tools are dropped.



REQUIRES MAINTENANCE

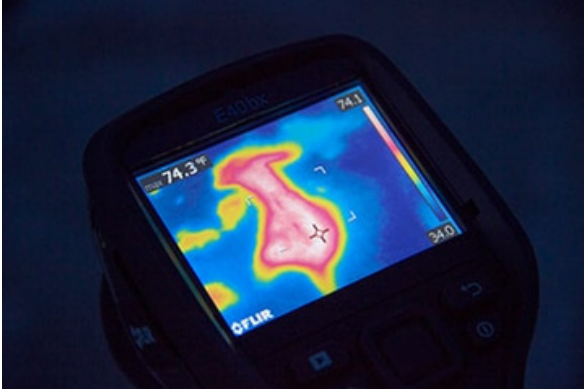
Just like any other roofing system, a spray foam roof needs routine maintenance.

If ignored, your warranty can be voided.



That's a lot of problems...the benefits must be
PHENOMENAL

BENEFITS OF A SPRAY FOAM ROOF



MINIMAL AMOUNT OF TEAR-OFF

In most cases, a roofing contractor only needs to remove saturated/wet insulation.

This saves money versus removing 100% of the roof.

HIGHEST R-VALUE

Spray foam has an R-value of 6.5 per inch of thickness. This is higher than any other roofing insulation.

R_{val}

A higher R-value reduces energy costs by keeping more heat/cool from leaving your building.



SEAMLESS

A spray foam roof has no seams, self-adheres to the existing roof, and encapsulates penetrations.

RENEWABLE

Once the roof reaches the length of the warranty, the roof can be "renewed" by simply cleaning the roof and adding more coating.



QUICKLY INSTALLED

With spray foam being "spray-applied", it's installed easier (and with less roofers) than other roofing systems.

Last section...let's check out some photos and videos!

PHOTOS OF SPRAY FOAM ROOFING



VIDEOS OF SPRAY FOAM ROOFING

[VIDEO: The pros and cons of spray foam roofing](#)

[VIDEO: Spray foam roofing installation from start to finish](#)

[VIDEO: How is a roof prepared before spray foam is installed?](#)

Want to learn even more about spray foam roofing? Please view: The Ultimate Guide to Spray Foam Roofing

[Read Now](#)



West Roofing Systems, Inc.