

High Performance Wet Curing Blankets

“A New Standard in Curing Concrete”

Contact: Denice Evans
Key Accounts Domestic & International
+1 (770) 655-6008 | (855) 259-2662



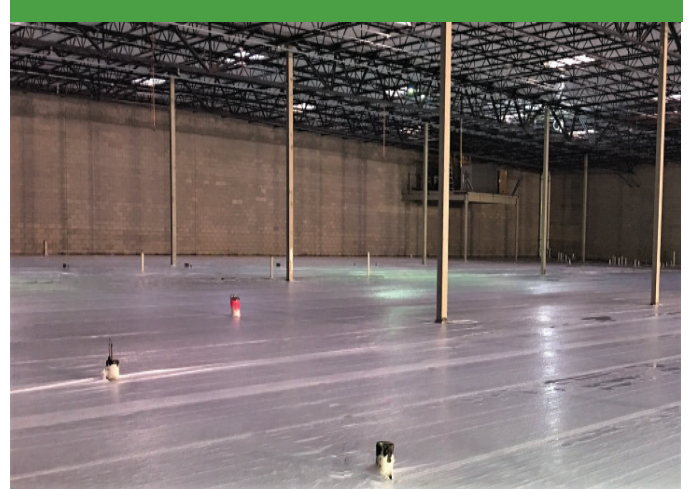
M MASTERSPEC



The Industry's Ultimate Wet Curing Blanket



RELIABLE CURE®
VAB



RELIABLE CURE®
SOG

How ReliableCure Works

Featuring a blend of absorbent, non-staining synthetic fibers and super-absorbent-polymers (SAP) laminated to a white opaque poly backing. ReliableCure™ lays flat on the concrete surface reducing the chance of efflorescence, unevenness, discoloration and cracking.

The super absorbent polymers act as mini reservoirs to provide curing water to the absorbent fibers in contact with the surface on an “as needed basis.” During the entire curing process, ReliableCure™ provides constant hydration and a minimum relative humidity condition on the slab of 90%. The opaque poly backing acts as a radiant barrier and prevents rising temperatures caused by the “greenhouse” effect.

It's Official! ReliableCure Wet Curing Blankets Now Specified In MasterSpec



ReliableCure SOG® and **ReliableCure VAB®** are now listed in Product **MasterSpec**, a program within **MasterSpec**. The inclusion of our specifications will expand brand recognition within the commercial construction industry, thus making it easier and faster for our customers and concrete specifiers to add ReliableCure wet curing blankets to their building projects.

What is MasterSpec?

MasterSpec is the most widely used, preeminent Master Specification System in use in commercial construction today. It is a product of The American Institute of Architects (AIA) featuring a comprehensive library of specifications that covers over 1700 sections in full-length, short-form, and outline formats. MasterSpec is used by many of the top architectural and engineering firms.

What is Product MasterSpec?

Product MasterSpec is a program that allows manufacturers to license sections from the MasterSpec libraries. It is an online tool that architects, engineers, and design professionals recognize and use when creating specifications. Construction professionals and non-professionals can access Product MasterSpec for free on their website.

ReliableCure

The Next Generation Wet Curing Blanket

- Rolls out flat.
No folding creases
- Less Material
Overlap: 4-6"
- Superior Absorption: each roll holds up to 50 gallons of water
- Any air bubbles easily removed with push broom
- Slab remains saturated for 7+ days allowing the concrete to reach its potential
- No rewetting required



Advantages of Wet Curing



- Surface hardness is increased
- Abrasion resistance is increased
- Scaling resistance is increased
- Surface permeability is reduced
- Surface cracking is decreased
- Curling is reduced (distortion of a slab curved upward or downward)
- Spalling is reduced
- Aids in the prevention of efflorescence*

Curing:

Without proper curing there is more shrinkage, especially on the top of a slab where drying occurs first. It's important to keep a slab moist starting immediately after the last finishing operation followed by wet curing.

More Wet Curing Benefits

Reduces Risk of Cracking

Plastic-Shrinkage Cracking: Cracks that run to the mid-depth of the concrete are distributed across the surface unevenly, and are usually short in length. Most often occurs while concrete is curing, due to the surface of the concrete drying too rapidly relative to the concrete below.

Crazing & Map Cracking: A web of fine, shallow cracks across the surface of the concrete. Also occur during curing due to the surface of concrete drying faster than the interior concrete, but the surface drying occurs at a lesser depth.



Plastic-Shrinkage



Crazing



Reduces Spalling

If the concrete is allowed to reach its maximum strength potential, porosity is minimized and will not allow water to freeze inside of the surface which can result in portions of the concrete to flake or “spall” off.

Reduces Curling

Curling is the distortion of a slab into a curved shape by upward or downward bending of the edges. This distortion can lift the edges of the slab from the base leaving an unsupported edge or corner which can crack when heavy loads are applied. Sometimes, curling is evident at any early age. In other cases, slabs may curl over an extended period.



Upward Concave Slabs



Downward Concave Slabs



Concrete Wet Curing – Slab-On Grade, Flatwork.

- Single Use hydration for Slab-On-Grade
- Engineered with super-absorbent synthetic fibers
- Non-staining polymers with opaque poly backing adhered to blanket.
- 8' x 200' – 1600 sq. ft./roll –
- Holds up to 50 gallons of water per roll.
- 7 Day Curing Period



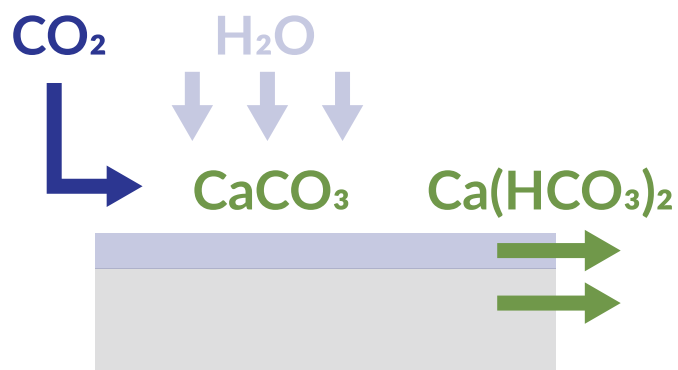
How To Prevent Efflorescence

When installing wet curing blanket, make sure blanket is installed flat with no wrinkles, using plenty of water



A properly installed curing blanket that retains moisture and remains flat on the slab helps keep CO_2 from reacting with the concrete surface, which minimizes efflorescence.

ReliableCure™ superior water retention keeps the blanket flat on the surface and allows consistent cement particle hydration.



ReliableCure SOG®

(for flatwork): Specified across the U.S. and Canada in major retail chains, hospitals, schools, hotels, etc. (partial list)

- **Home Depot Distribution Centers**
(hard spec'd – no substitutions)
- **Winco**
- **Publix Grocery Stores**
- **IKEA**
- **Floor and Decor**
- **Walmart**
- **LidL**
- **Embassy Suites**
- **Marriott**
- **Fairfield Inn & Suites**
- **Sprouts Retail Chain**
- **Hyatt Hotel Chain**
- **Autograph Hotel**



RELIABLECURE®
SOG

Why ReliableCure SOG®?

- ✓ **Reduced labor for installation**
(easy 2 person install & one high volume water hose)
- ✓ **Blanket Stays Hydrated for Length of Cure**
(no re-wetting or external hydration system needed)
- ✓ **Reduced labor to maintain surface wetness**
- ✓ **Reduced water consumption**
- ✓ **Avoid cross-contamination from multiuse blankets**
- ✓ **Eliminate warehousing/handling/transportation**
- ✓ **One person to carry 55 LB. roll**
- ✓ **Drop shipped directly to your jobsite**
- ✓ **Less handling equals less exposure to worker injuries**
- ✓ **Reduced supervision for hydration monitoring**
- ✓ **Greater blanket wind resistance**

Industrial Floors

RELIABLE *CURE*®
SOG



Main Markets- ReliableCure SOG®

- Schools
- Hospitals
- Decorative/Polished Floors
- Retail Chain Stores
- Sprouts, Lidl, IKEA, etc.
- Big box stores
- Warehouses and distribution centers
- Storage & office buildings
- Industrial Flooring
- Parking Lots
- Super flat floors
(gymnasium, hockey rinks)
- Specs that call for moisture retaining covers
(ASTM C 171)



Concrete Wet Curing – Vertical and Bridge Deck Applications

- Single Use hydration for Vertical and Bridge
- Perforated vapor barrier allowing rehydration for sloped, vertical, and bridge deck applications
- 8' x 150' – 1200 sq. ft./roll –
Holds up to 50 gallons of water per roll.
- 7 Day PLUS Curing Period



RELIABLE *CURE*®

VAB



**Crooked Creek
Reclamation Facility,**
Norcross, GA



Edinger Bridge,
Huntington Beach, CA

ReliableCure VAB®

(vertical & bridge deck applications) meets or exceeds Department of Transportation Standards & Specifications in all 50 states plus Washington D.C., District of Columbia.

Why ReliableCure VAB®?

- ✓ **Reduced labor for installation**
(easy 2 person install & one high volume water hose)
- ✓ **Reduced supervision & labor for hydration monitoring**
(no re-wetting or external hydration system needed)
- ✓ **Reduced water consumption**
- ✓ **Near elimination of water runoff into environment**
- ✓ **Avoid cross-contamination from multiuse blankets**
- ✓ **One person to carry 55 lb. 1200 sq. ft. roll**
- ✓ **Drop shipped directly to jobsite**
- ✓ **Less handling equals less exposure to worker's injuries**
- ✓ **Greater blanket wind resistance due to water weight**
- ✓ **Get Green - ReliableCure is partially biodegradable**

Main Markets- ReliableCure VAB®

- **Bridge Decks & Approaches**
- **Concrete Overlays**
- **Vertical Applications** i.e. Sound Walls
- **Columns**
- **Dams**
- **Light Rail**
- **Concrete Runways**
- **Water Treatment/Reclamation Plants**
- **Concrete Floors** Requiring 14-day Wet Cure
- **Parking Decks** Specified AASHTO M171

ReliableCureVAB® Installation System:

Pre-wetting from working bridge followed by immediate installation of blankets as required by certain state's DOT.

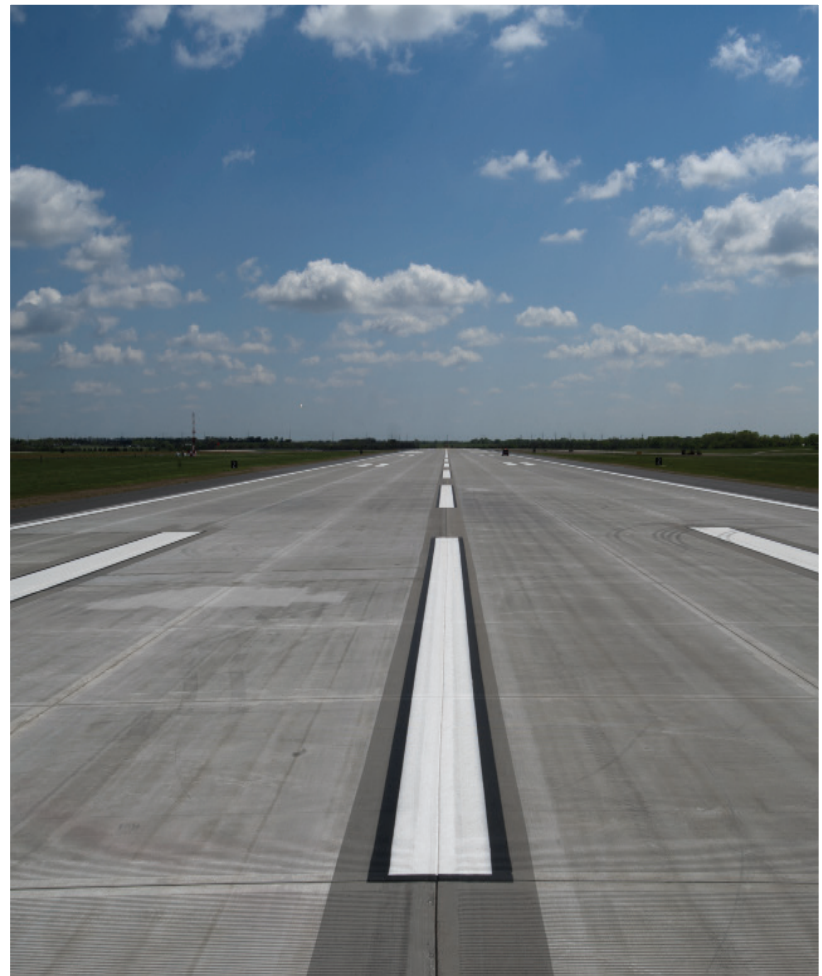




Water Treatment & Reclamation Plants



Parking Garages



Concrete Runways, Airports and Military installations

ReliableCureVAB® Installation System:

Contractors can adapt their present installation process when switching to ReliableCure VAB™





Vertical Application

Designed to be used on wall surfaces and columns



**Prefabricated
Hydration System

Vertical - 18" Ozone
Contractor Wall



ReliableCure VS. Multi-Use



ReliableCure

- Less overlap for better blanket yield
- Lay flat install with no air pockets for consistent finished surface
- Full hydration weight reduces the need of sandbags



Multi-Use

- Cellulose fiber blankets require additional weight to hold the blanket to the slab
- Multi use blanket has a memory when folded – thus it will not lay flat to give a consistent finish

ReliableCure VS. Multi-Use

Multi-Use



- Multi Use blankets are warehoused by contractor
- Storage can increase mold & mildew on blankets
- Delivered to jobsite folded
- Unruly size makes it difficult to lay down flat
- Extra time & labor to install
- Placement affected by wind

VS.

RELIABLE **CURE**
VAB

RELIABLE **CURE**
SOG



- ReliableCure is delivered to jobsite as needed
- Individually bagged & clean from debris
- ReliableCure rolls out evenly on slab
- 3 men can roll out & hydrate 1 roll (1600 sq.ft.) blanket in less than 10 minutes
- ReliableCure can be cut to size to reduce waste.
Recommended: Heavy Duty Carbo Titanium 8" or 9" Bent Scissors.

ReliableCure/Multi-Use Cost Comparison

Task:	Man Hours:	
	Multi-Use	ReliableCure
Trasportation to jobsite	5.0	--
Folding/binding/reloading	--	--
Moving from slab to drumpster	--	2.0
Transport back to storage yard	5.0	--
Unload and Wash	32.0	--
Folding/binding/warehouse	4.0	--
TOTAL LABOR	50.0	2.0

*** Based on: 16,000 sq.ft. single pour slab | 10' x 50' blankets**

High Profile Projects Around The Country

ReliableCure SOG® on the job!

Barton Malow - #Megaslab
250,000 sq. ft. *continuous* concrete *slab pour*

January 2018

GM Assembly Plant

Arlington, Texas



ReliableCure Slab-on-Grade



reliableconcreteaccessories.com

ReliableCure VAB® on the job!



Bonner Bridge Replacement

Completion Date - 2019

Dare County, North Carolina

- 77 total spans
- 2.8 miles total length
- Being built for 100 year lifespan
- ReliableCure VAB being used throughout the entire project.



ReliableCure Vertical and Bridge



reliableconcreteaccessories.com



Signal Butte WTP & Santan WTP - Gilbert, AZ
Sundt Construction





ReliableCure VAB[®]

Bridge deck installation—
multiple rolls.



Bonner Bridge – Nags Head, NC

PCL Constructors





Single Roll Dimensions:

ReliableCure SOG®

Each roll - 96"

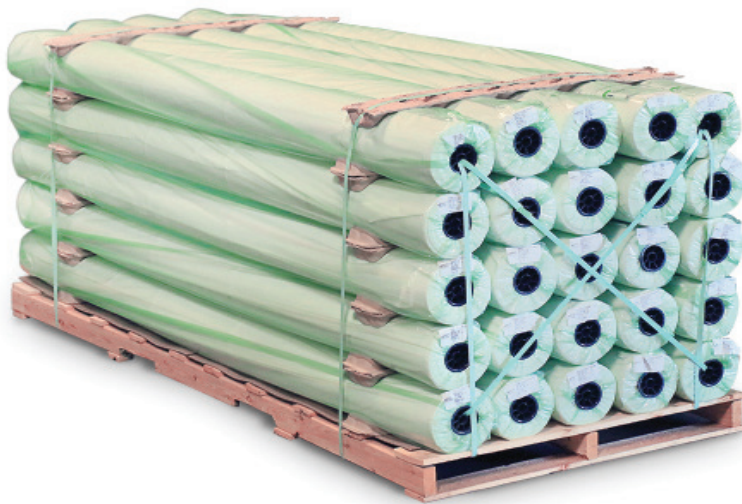
ReliableCure VAB®

Each roll - 94"

Each roll individually wrapped in plastic.

Installation instructions

- visual & written
- English, Spanish, French.



ReliableCure SOG® - 25 Rolls per pallet

Pallet Dimentions: 42" x 96" x 43"

Weight: 1,425 Lbs

ReliableCure VAB® - 16 Rolls per pallet

Pallet Dimentions: 42" x 96" x 40"

Weight: 930 Lbs

Heavy duty roll cradles

- secure blankets on pallet.