



## ENERGY TRANSFORMATION

# Get the Critical Intelligence You Need To Adapt Better to New Challenges

Today, an energy provider needs to know as much about dynamic climate risk, community vulnerability, and new mobility as it does about the capacity and condition of its own infrastructure. Yet much of this data is often disparate, siloed, and hard to distill into actionable insights.

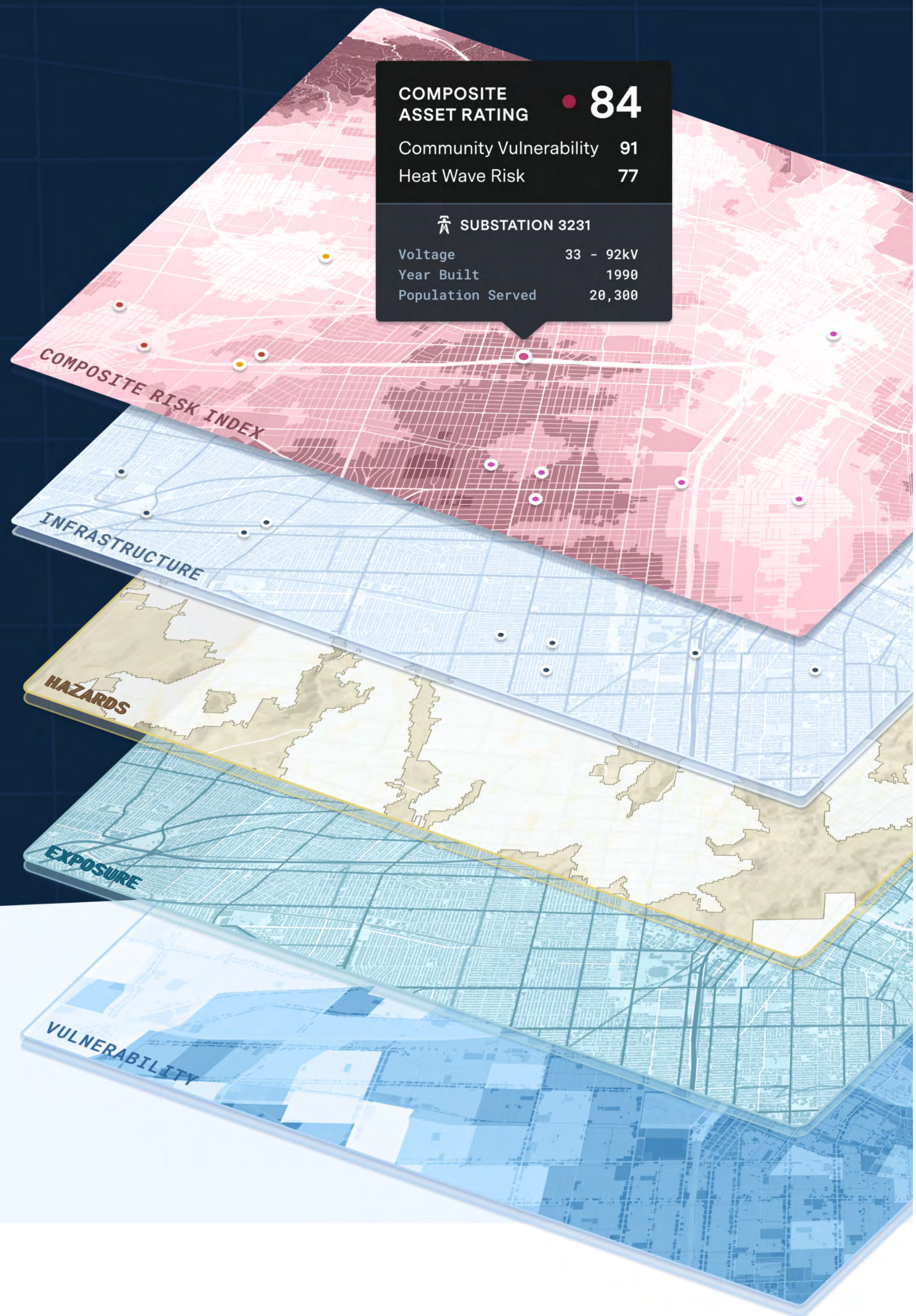
## SERVING THE BEST IN ENERGY



NORTHERN &  
CENTRAL CA



WESTERN  
PA



## Pinpoint where to prioritize your infrastructure investments.

The UrbanFootprint location intelligence platform delivers granular, sector-specific insights on land, buildings, infrastructure, people, climate, and market dynamics. With its holistic view of the built and natural environment, natural hazards and climate risk, and community resilience, it provides the hard data to make sound investment and planning decisions in the energy sector. UrbanFootprint is purpose built to help utilities, consultancies, agencies, and other energy stakeholders to:

- 🔧 Harden the energy grid to climate threats
- 🔌 Upgrade the grid to support EV charging

- ⚡ Add or replace substation or transformer capacity
- 🔌 Site and install EV chargers and microgrids

## Adapt Better

Prioritize grid investments. Boost energy efficiency. Optimize EV deployment and community energy strategies. All from a single source of climate, hazard, urban, and community vulnerability data.

Ready to get started with UrbanFootprint? [Reach out to our team →](#)



## FIND SIGNAL THROUGH NOISE

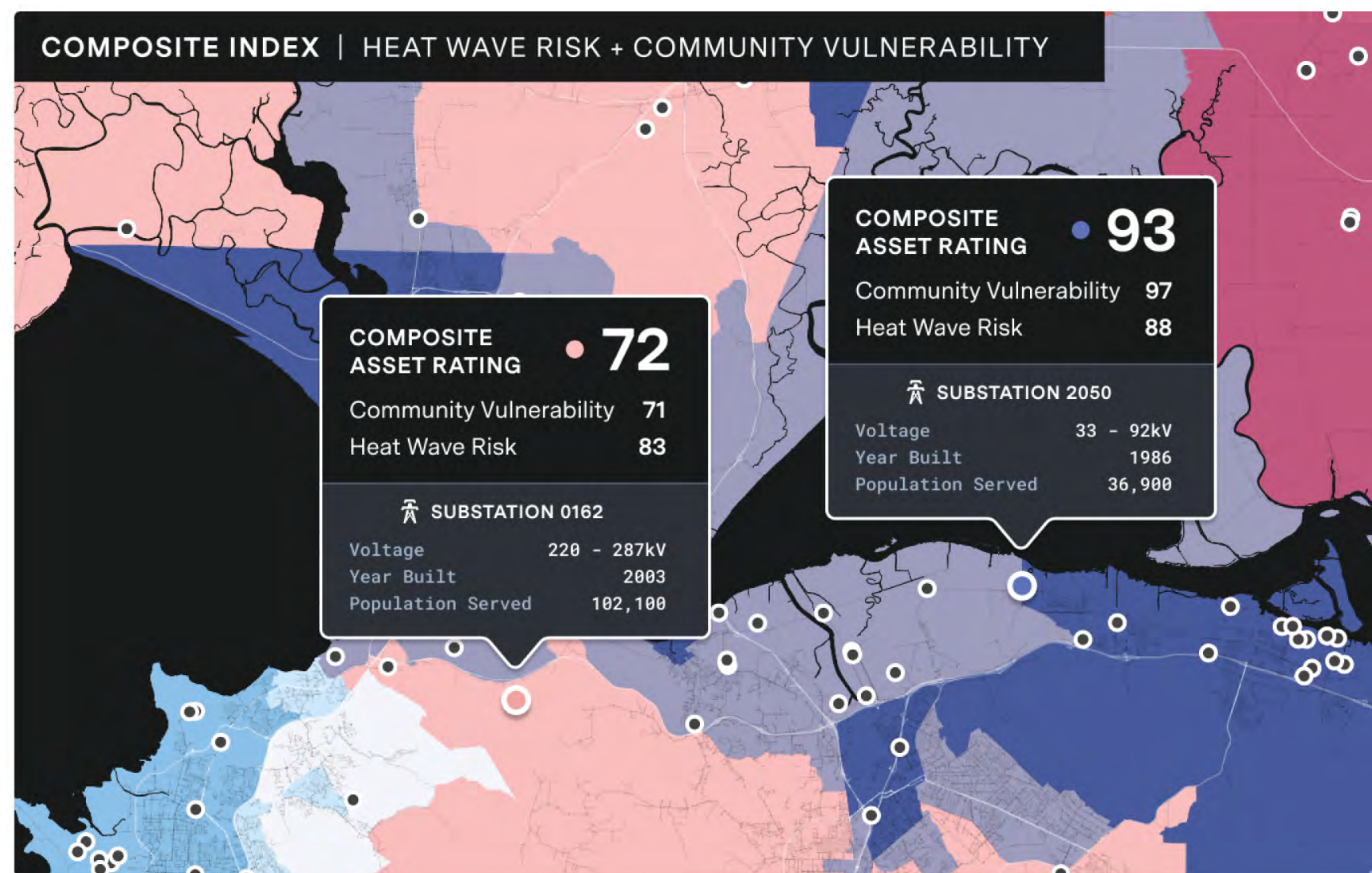
**Accelerating climate change, electrification and decarbonization mandates, and demands for more efficient strategies are transforming today's energy industry. Whether you're assessing risks to assets or communities or evaluating site suitability, targeted insights can get you there — faster.**

UrbanFootprint curates, cleans, and normalizes hundreds of previously isolated and disparate datasets, and unifies them into a single platform to show how infrastructural, environmental, and sociodemographic factors interact across 160 million parcels of land across the U.S. Powerful mapping and analysis capabilities integrate this rich data core with customer data to deliver detailed visualizations and give a 360° view of community resilience, hazard risk, and investment return. UrbanFootprint offers two solutions to help modernize energy infrastructure.

### **Grid Resilience** INSIGHTS

**Prioritize grid asset investments and plan grid resilience interventions, minimizing impacts on disadvantaged communities.**

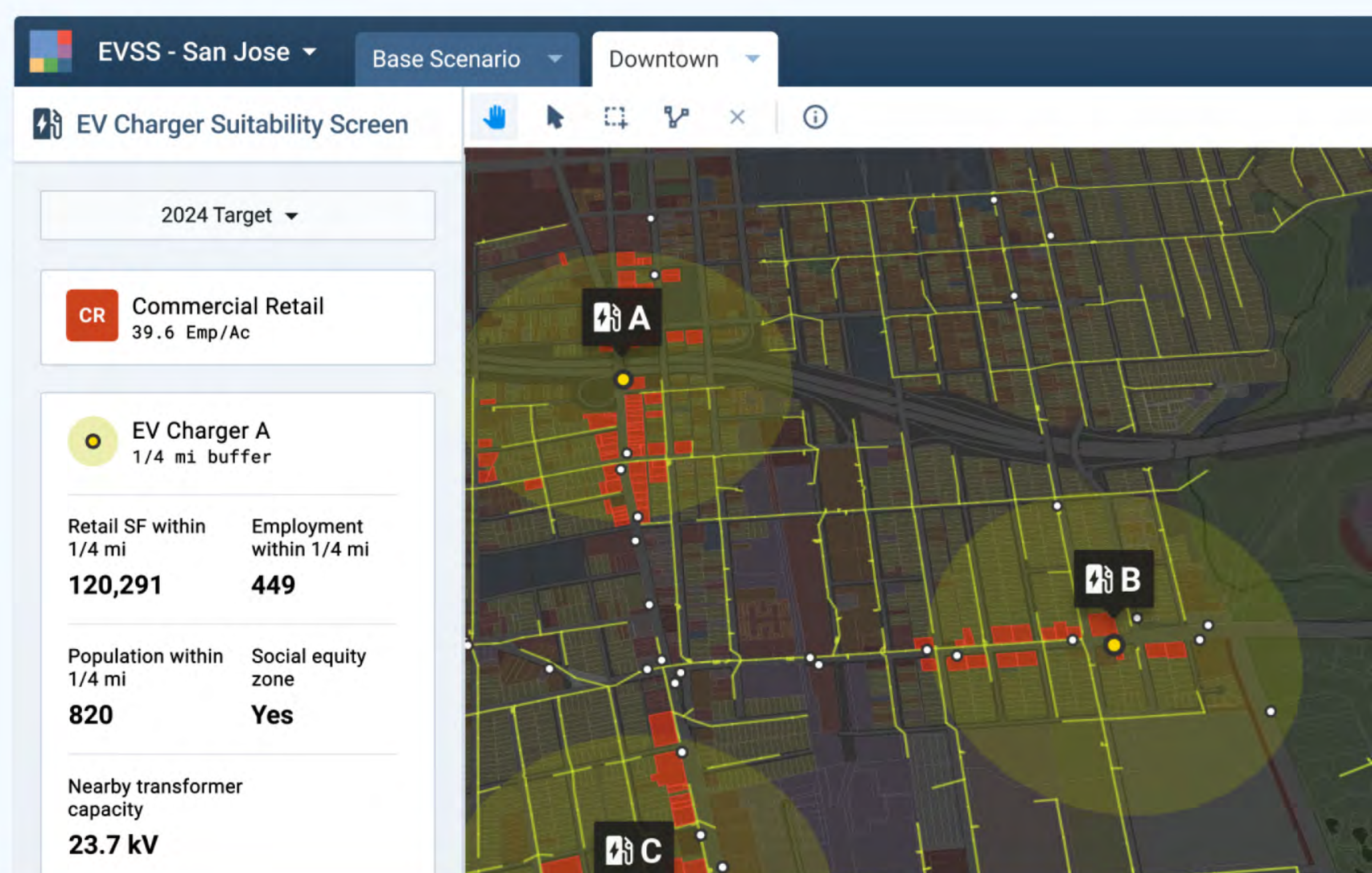
- Pinpoint which assets are at risk of wildfire, heatwave, storm, sea rise, or other emerging hazards
- Learn which communities and populations are most vulnerable to extreme climate stressors and grid failure
- Reprioritize substation hardening and upgrades based on scoring of infrastructure capacity and age, climate impacts, service population exposure, and community vulnerability



### **Electric Vehicle** INSIGHTS

**Prioritize grid upgrades to invest in clean transportation infrastructure and evaluate EV charger site suitability.**

- Pinpoint EV network gaps by intersecting views of current charger locations and where communities may benefit from new installations
- Identify the best areas for EV charger siting with a comprehensive view of community need and suitability
- Screen and score any utility service territory for EV charger suitability based on urban, socio-demographic, grid-asset, and charger-utilization data



Ready to get started with UrbanFootprint? [Reach out to our team.](#)

 [adapt-better@urbanfootprint.com](mailto:adapt-better@urbanfootprint.com)