



# Bitsight Presentation

---

April 2021

[www.bitsight.com](http://www.bitsight.com)

# Bitsight Rating - Use Cases

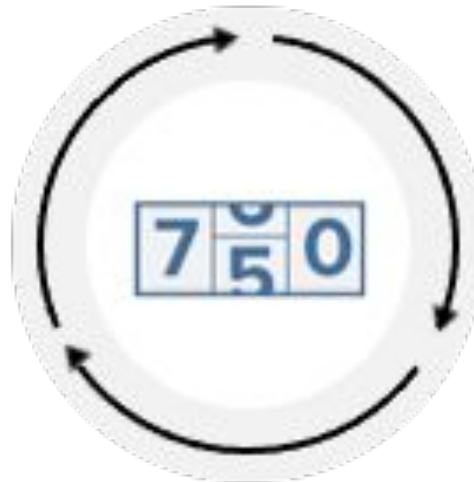
How secure is my organization?



SECURITY PERFORMANCE  
MANAGEMENT

- Assess cyber risk and compare to industry and peers
- Efficiently allocate resources to address cyber risks
- Set, track, report or program performance over time

BITSIGHT®



How secure are my third parties?

THIRD PARTY  
RISK MANAGEMENT



- Make cyber risk decisions at the speed of the business
- See where the cyber risk is across the supply chain
- Prioritize resources to focus on riskiest vendors
- Team up with vendors to remediate cyber risk



---

Demonstration

# Financial Quantification for Enterprise Cyber Risk

---

April 2021

Powered by  
**KOVRR**

[www.bitsight.com](http://www.bitsight.com)

# Cyber Risk



---

## Most people don't understand it

It's very complex, and discussions are generally not focused on how big the problem is

## It's not a technical issue

Conversations tend to focus on technical topics such as thwarting phishing attacks, etc.

## Cyber Risk is Business Risk

We need to change the conversation from technical terms to business terms

# Financial Quantification

For Enterprise Cyber Risk



## What options are there?

### Hire an Outside Consultant

Depending on who you hire, you should get some decent results.

But:

- Expensive
- It takes a lot of time
- It's resource intensive
- The results are single-point-in-time

### Bring the Project In-House

You'll need to hire the right expertise to get this done.

And:

- Expensive
- It takes a lot of time
- It's resource intensive & crosses multiple departments and disciplines
- It requires a lot of data
- The results are single-point-in-time

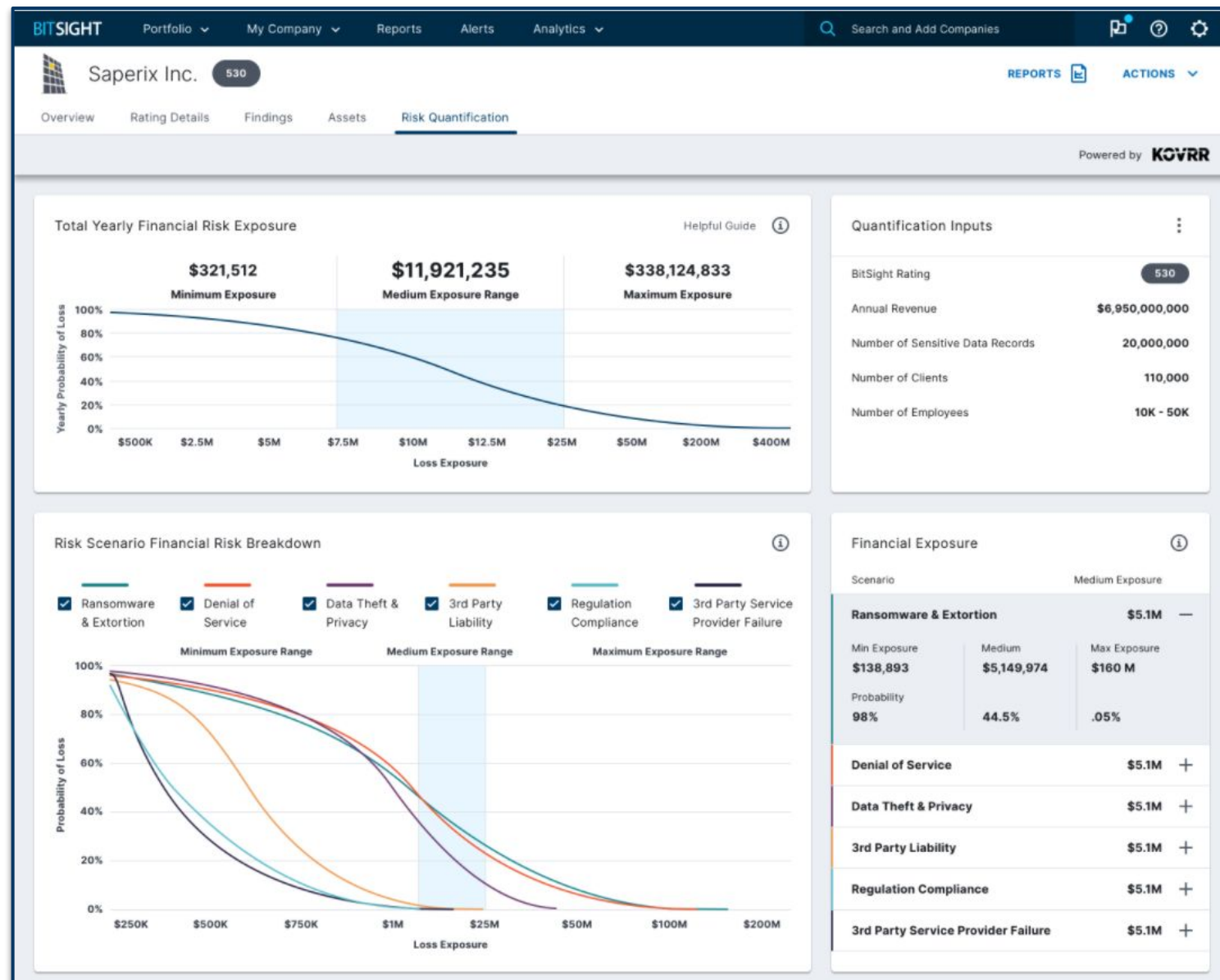
# Financial Quantification

For Enterprise Cyber Risk

Turnkey Solution

Proven Models Developed for Cyber Insurance

On-Demand Analytics

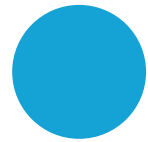


# How does it work?



## Utilizes multiple cyber risk models

Kovrr built this technology to model each type of loss independently, then combine the results to deliver the industry's most comprehensive analysis.



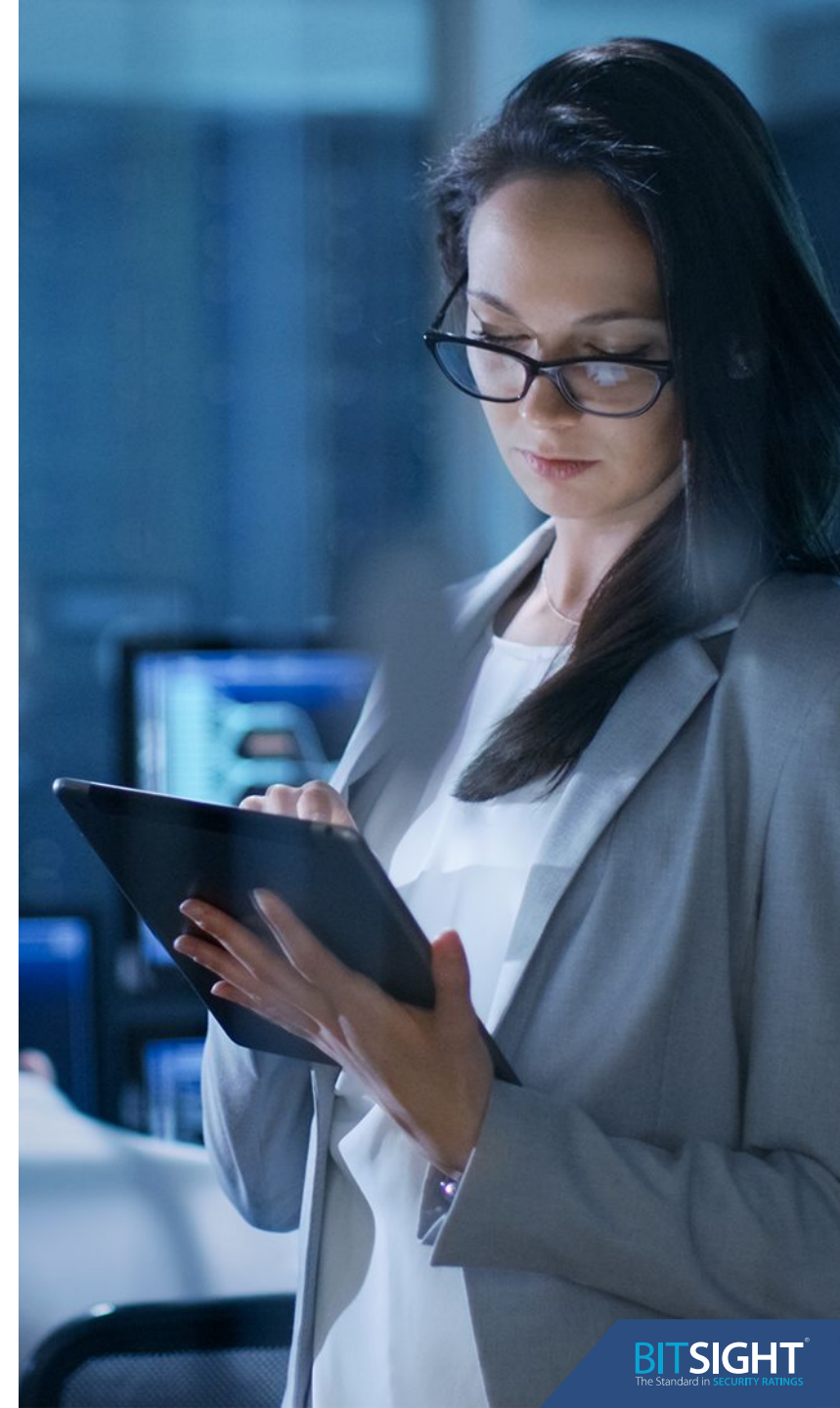
## Incorporates multiple sources of data

Risk vector & digital asset data from BitSight, firmographic data, cyber insurance claims data, cyber threat intelligence data.



## Organizes output into discrete business impact scenarios

Ransomware & extortion, denial of service, etc., and how the scenarios will manifest themselves.





# Questions



**BITSIGHT**<sup>®</sup>  
The Standard in **SECURITY RATINGS**