

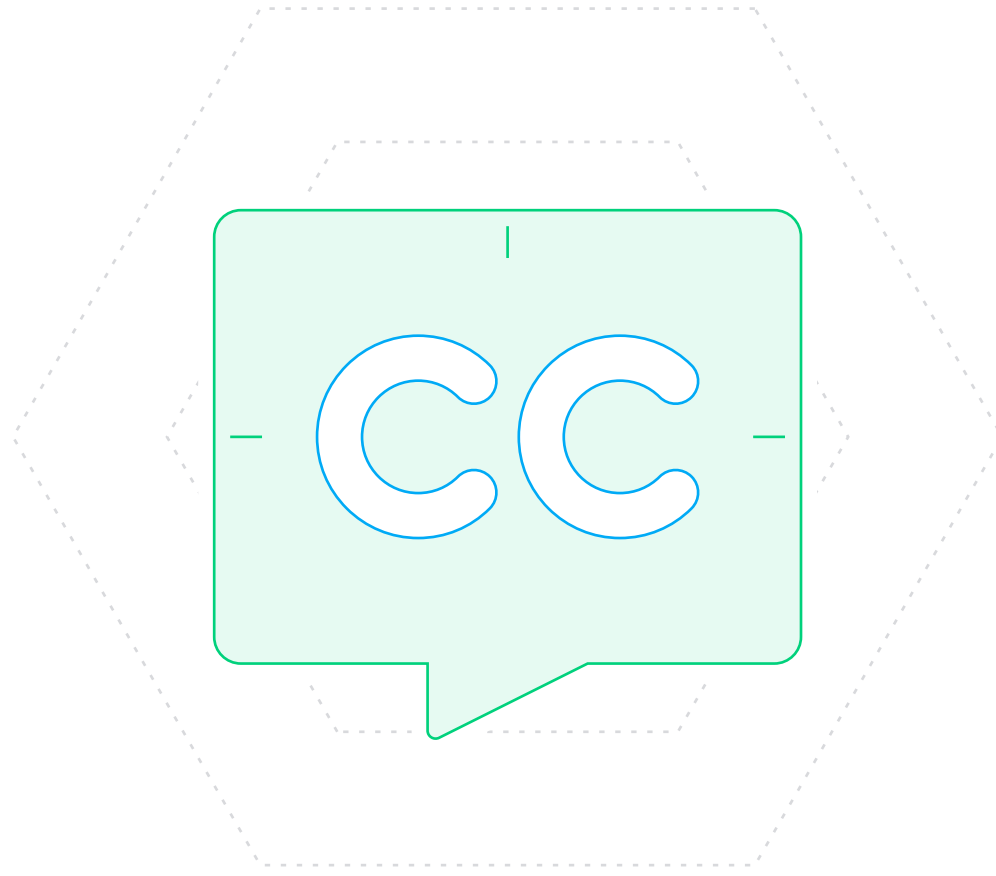
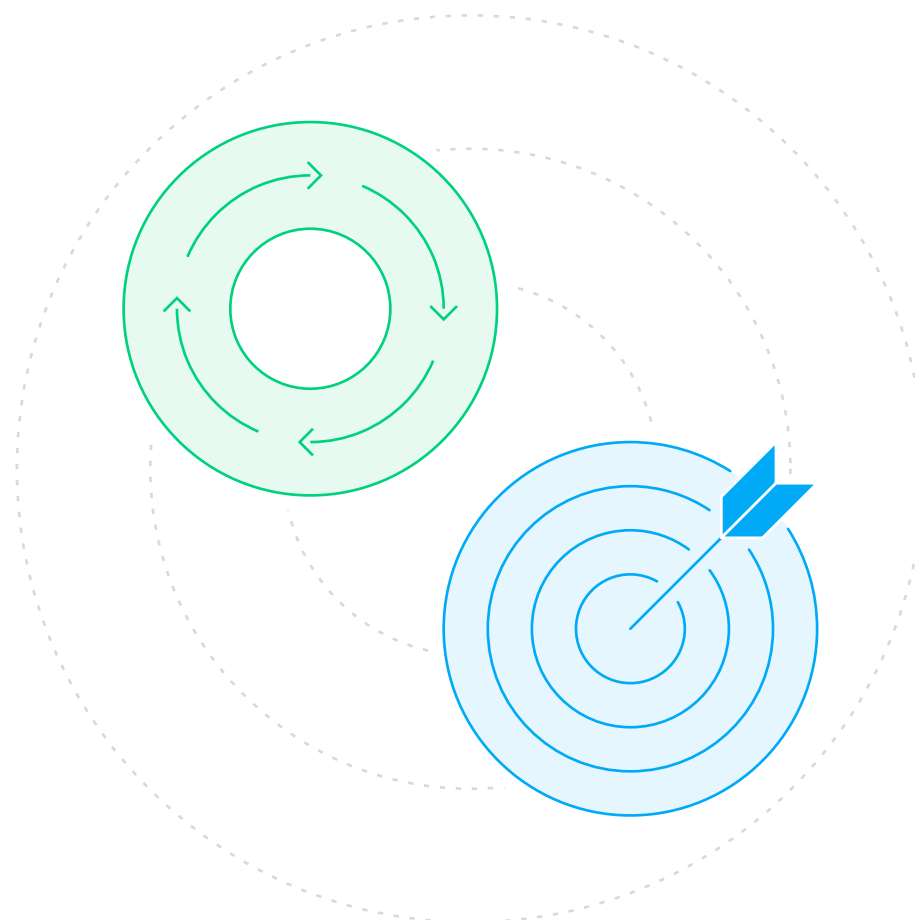
Accessible Design vs Inclusive Design

Differences Between Accessible Design and Inclusive Design

Accessibility focuses on outcome-based qualities or attributes.

/

Inclusivity is a process-based methodology.



Accessibility aims to create products usable by people with disabilities.

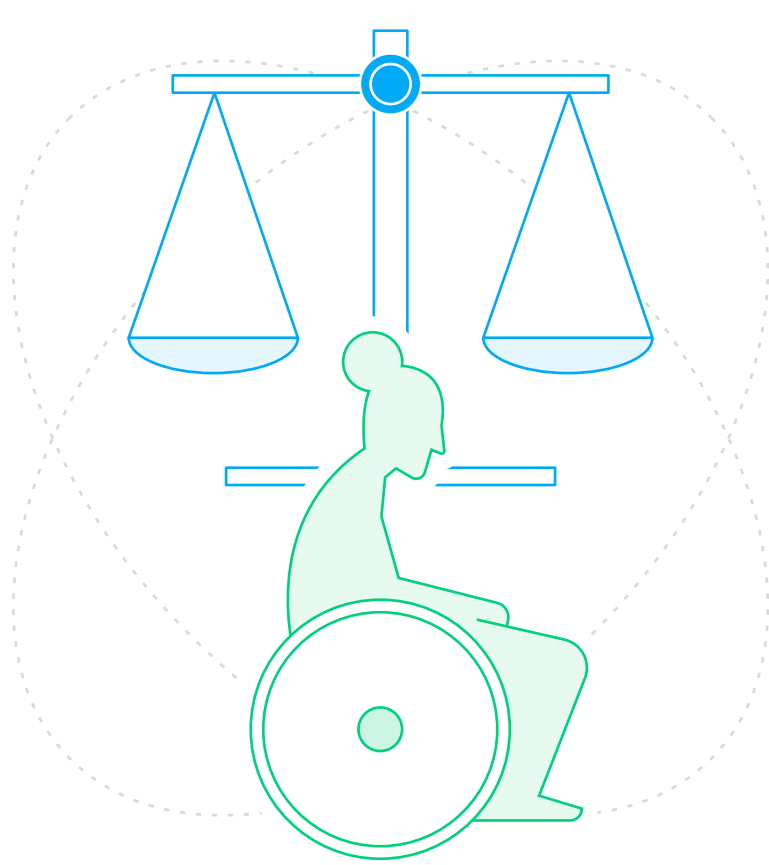
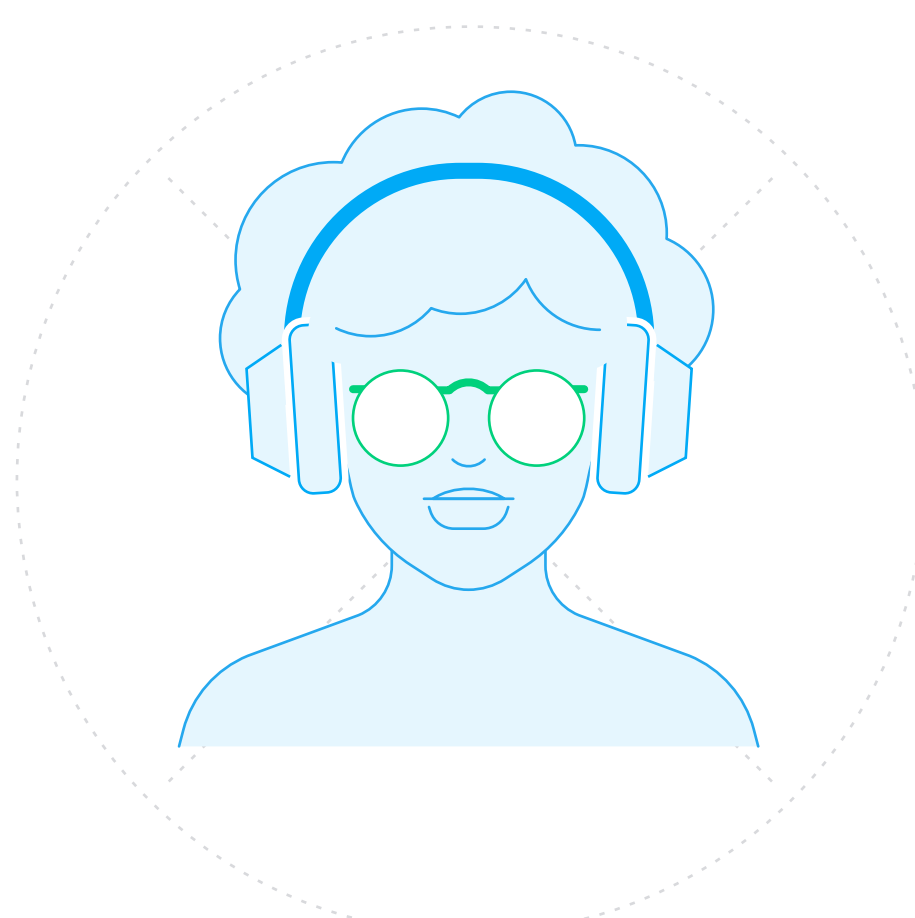
/

Inclusivity focuses on making products user-friendly for everyone.

Accessibility looks at “typical” vs. disabled customers.

/

Inclusivity asserts that there is no “typical” customer.



Accessibility looks to established laws and standards for guidance.

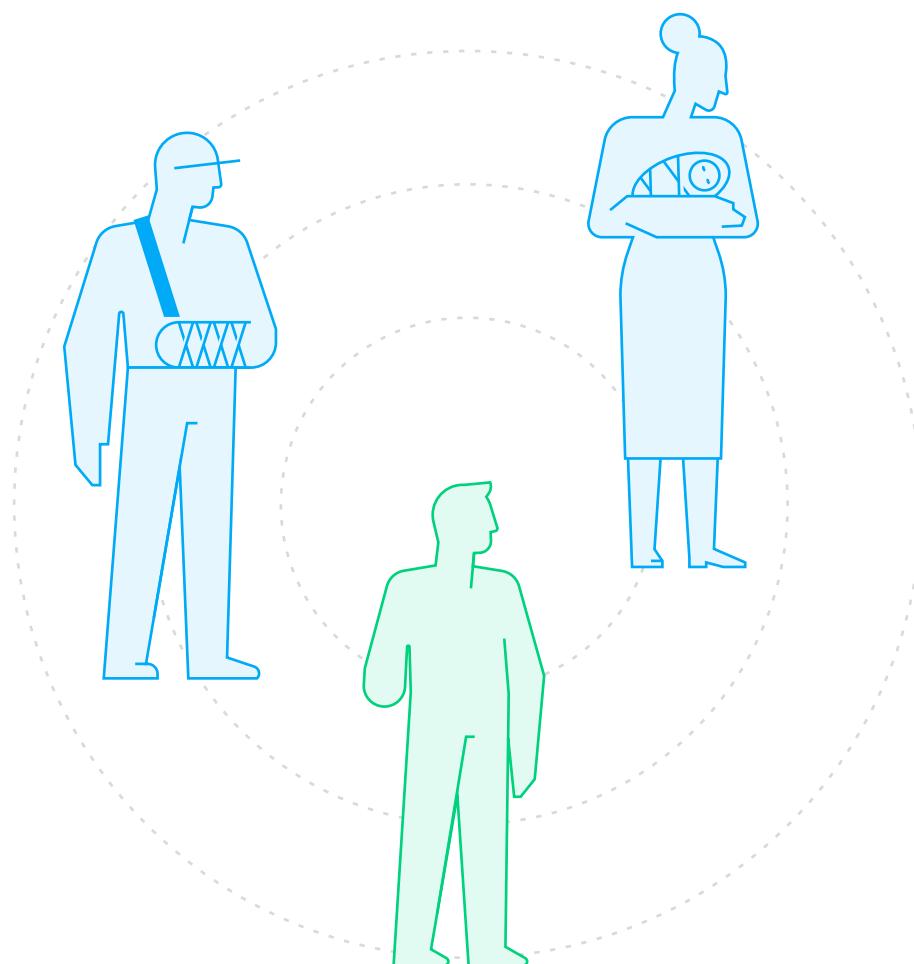
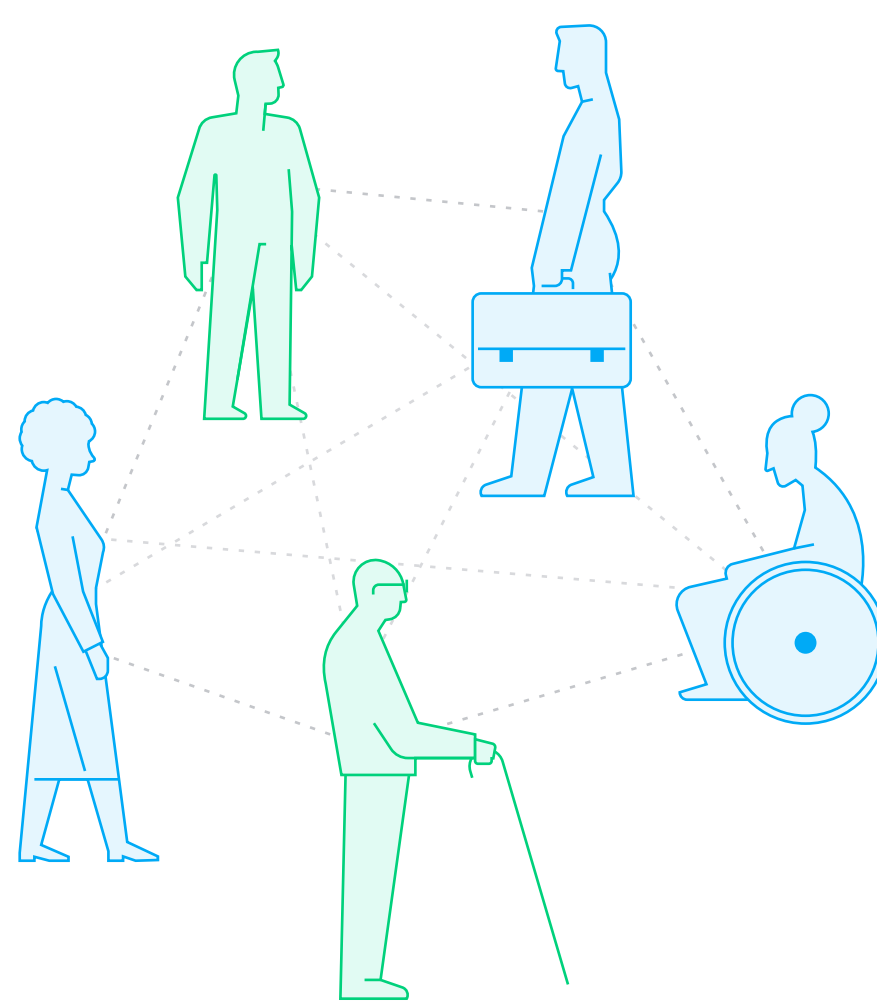
/

Inclusivity looks for cases of exclusion to address.

Accessibility focuses on specific physical or cognitive disabilities.

/

Inclusivity focuses on exclusion for any reason and connections between people.



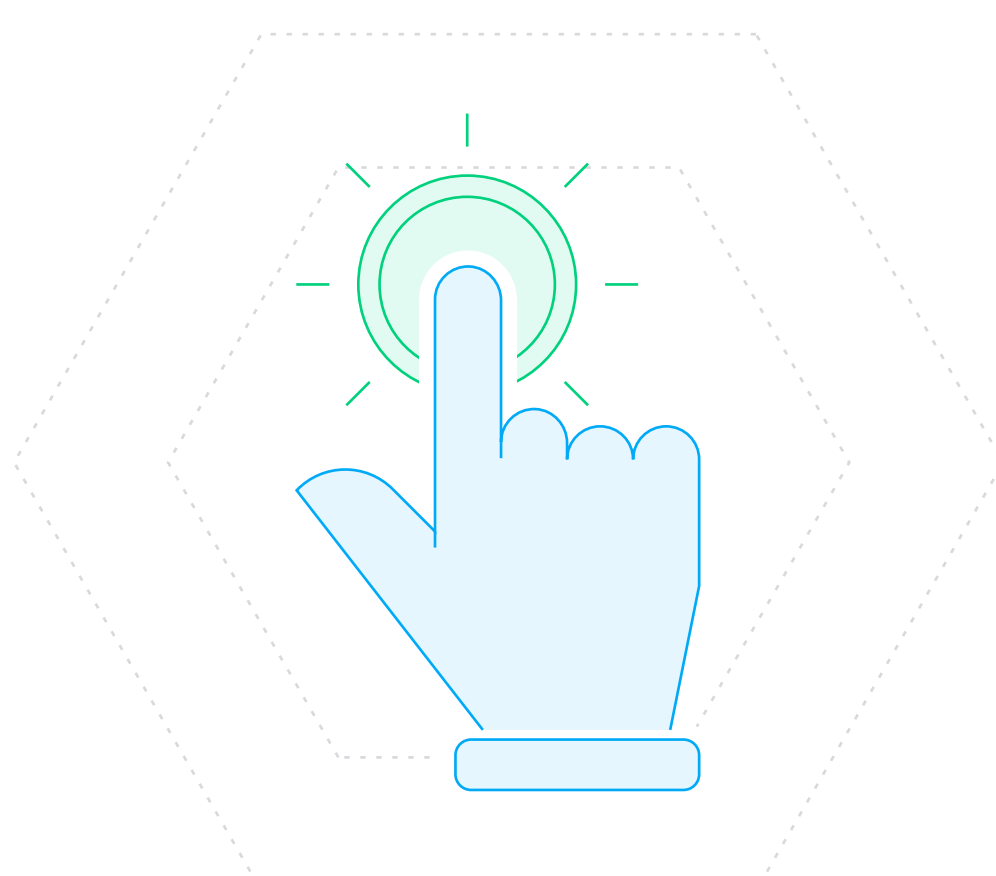
Accessibility aims to understand the most common disabilities.

/

Inclusivity understands that exclusion can happen to anyone depending on context.

Similarities Between Accessible Design and Inclusive Design

Accessible design and inclusive design work hand in hand to lower barriers and make products usable by all people.



Accessibility and inclusive design both recognize that disability happens at the point of interaction between people and their environment.

Accessibility and inclusive design can both learn from the way people adapt to technology based on their abilities in a given context.

