



Hoya Technology Reference Guide

Redefining every aspect of vision correction

HOYA
FOR THE VISIONARIES

Global Technology Leader

Hoya is a global medical technology company that employs about 37,000 people in over 30 countries worldwide. Since 1941, Hoya has driven optical technology innovation with a passion for finding the best vision solutions. As we tirelessly pursue better ways to manipulate light, we know that the sharp focus of our research and design of optic lenses will lead to higher quality lens solutions—that deliver clear results for our eye care partners and their patients.

As a technology innovator, our custom surfacing is only the beginning for Hoya lenses, and the innovations that lie ahead will surely continue to raise the bar and write history for unsurpassed visual achievements in optics. We challenge ourselves to strive for perfection. We are here to push limits and set standards. We are Hoya.



Hoya is not only the technological leader of optical lens designs, materials and treatments – 100% of our global business relates to the manipulation of light.



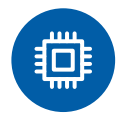
Health Care

- Eyeglass lenses
- Contact lenses



Imaging

- Optical glass/lenses
- Laser equipment



Electronics

- Mask blanks, photomasks for LSI
- Photomasks for LCD panels
- Glass disks for HDD



Medical

- Medical endoscopes
- Intraocular lenses
- Prosthetic fillers and orthopedic implants



Our Focus Is on You

Hoya has been a partner to Eye Care professionals for over 75 years. You change how thousands of people see the world every day and to us, you are visionaries.

Our products, pricing, and support programs are all designed with you, the eye care professional in mind. We share a vision with you, based on care, knowledge and foresight.

- ▶ Your ability to **care** for your patients is our greatest priority.
- ▶ We're your partner. Not your competition. We never sell directly to your patients.
- ▶ Your knowledge gives people the gift of vision and our mission is to help you expand on your **knowledge**.
- ▶ We are dedicated to supporting your practice with business consulting, employee education, patient experience tools and much more.
- ▶ Your **foresight** is key to your success and we will use our innovation, technology and market insights to help your business grow and flourish.



Become an ally at ecpally.com



Happy Learning
at Empower U!



What is Hoya Empower U?

EMPOWER U

ONLINE TRAINING

Hoya Empower U is a series of online training modules to help you:

- Learn all about your job
- Learn all about the optical market
- Learn how Hoya technology improves vision
- Learn the skills needed to grow into a valuable asset of the practice
- Learn how to improve the business you are in with Hoya as your partner



Free ABO
Credits

Coming soon.
New Hoya
Learning
Management
System!

Registering is Easy:

1. Have your Hoya 6-digit account number and password handy (password is your Hoyanet login – this is likely your office’s primary phone number, but your office may have chosen another login).
2. Visit learning.hoyavision.com
3. Click the REGISTER button.

For login information or questions contact Jobson Medical:
support+id1446@jobsonmedicalinformation.zendesk.com

4. Complete the User Registration form; create a username and password for your personal account and click REGISTER.
5. If successful, you’ll receive this message.

The registration process was completed successfully. You will receive an email with your verification code, which is required for the first time that you login.

6. On the email you receive, click the link “<http://learning.hoyavision.com...>” (see example below):

Verification Code: dQ5UFd6H1oc_

You can use the following link to complete your verified registration:

http://learning.hoyavision.com/Default.aspx?ctl=login&username=accountname&verificationcode=dQ5UFd6H1oc_

Thank you, we appreciate your support...

7. Login with your username and password. (see screen below)

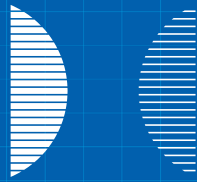
Account Username

Account Password

Hoya Territory Manager Contact

Hoyalux iD Progressive Lenses

Experience



Visual



Harmony



Hoyalux iD MyStyle[®] 2 is the most personalized and technologically advanced design available today

MYSTYLE

2

Hoya understands that everyone sees differently. It is essential to not only take into account the prescription and required correction, but also the individual characteristics of the wearer. iD MyStyle 2 takes into account all the variables that are specific for each wearer.

Our patented Integrated Dual Surface™ (iD) design shapes lenses exclusively for the way your patients see. It's the first to shape a lens design on both the front and back surface, which results in more comfortable transitions between near and far distances, wider viewing zones, dramatically reduces blurring in peripheral vision.

With Binocular Harmonization Technology™ (BHT), iD MyStyle 2 takes into account the differences between right and left prescriptions to balance the design performance. Providing perfect and effortless focus, constant stability and excellent depth of vision.



Binocular Harmonization Technology



Position of Wear



iD Design



Stable View



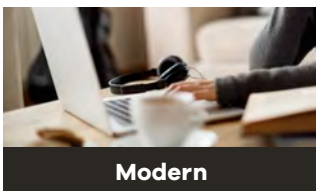
Infinite Optics



4 Convenience Options

4 Convenience Options

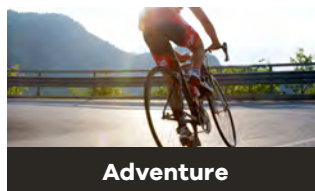
Customizing iD MyStyle 2 lens design just got easier - Choose from 4 convenient profiles to get you on your way to customizing the perfect lens for your patient.



Modern

Indoors/Outdoors

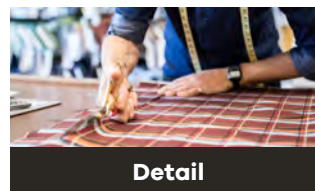
- Anyone who prefers only one pair of lenses for convenience
- No clear preference for specific distance



Adventure

Outdoors

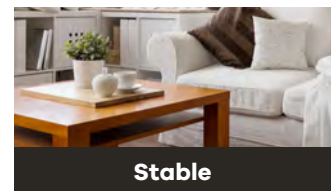
- Outdoor sports and activities
- Teacher/Driver
- Walks dog daily
- Clear edge to edge distance



Detail

Indoors

- IT worker/mechanic/accountant
- Close work focus
- Puzzles, crafts, scrap booking, hobbyist



Stable

Indoors

- Experienced wearer
- Senior/Sedentary/less active
- Eye gazer
- ST28 to PAL

Hoyalux iD LifeStyle® 3

Easy to Explain, to Prescribe and to Adapt

Things couldn't get any clearer than with iD LifeStyle 3 – Hoya's new and improved progressive design that comes with new variations matching your patient's lifestyle. iD LifeStyle 3 is the newest generation of the iD Integrated Dual Side™ (iD) progressive product family. The foundation is our patented Integrated Dual Side Design technology and we added the Binocular Eye Model and Binocular Harmonization Technology. The combination of the three will provide a significant improvement in patient comfort and adaptation.



Binocular Harmonization Technology



Position of Wear



iD Design



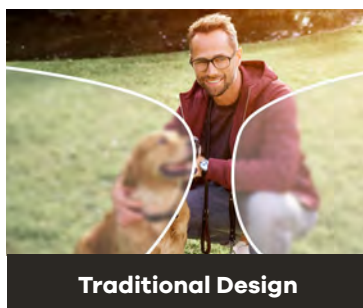
Stable View



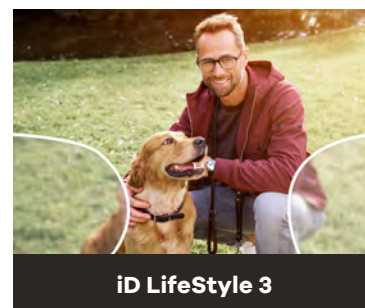
3 Design Variations



Expanded Corridor Length Options



Traditional Design



iD LifeStyle 3

Design Benefits

- Optimized visual acuity and a crisper image perception
- Noticeably more relaxed vision thanks to precise and effortless focusing
- More accurate correction

Available Designs

- iD LifeStyle 3 Indoor: Designed for presbyopes who spend a lot of their time indoors, looking at digital devices or reading
- iD LifeStyle 3 Urban: Designed for presbyopes who are active, always on the go but also enjoy reading books and using their digital devices
- iD LifeStyle 3 Outdoor: Designed for presbyopes who primarily wear their correction for distance use, but still require clear vision to see their phone and other near materials

**Simply
Outstanding
Progressive
Lenses**

A New Array of Possibilities

Hoyalux Array[®] 2 A Leap Forward in the Advancement of Progressive Lens Technology

ARRAY

2

Hoya's best-in-class technologies and quality continue to advance progressive lenses forward. Array 2 applies Hoya free form backside surfacing technology to virtually any semi-finished single vision lens, in any material, allowing your practice to offer a greater selection of lens options. Array 2 expanded availability makes dispensing multiple pairs of glasses easy.



**Binocular
Harmonization
Technology**



Position of Wear



**Free form
backside
Surfacing**



**Provides Wider,
More Stable
Viewing Areas**



**Larger Cut Outs
to Fit Larger
Modern Frames**



Traditional Design



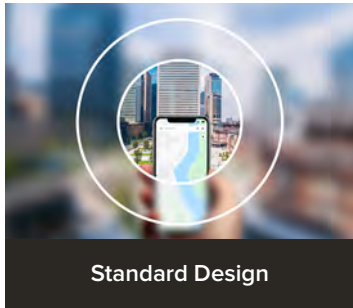
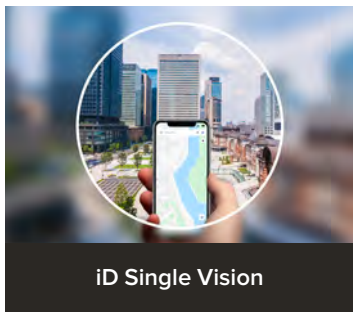
Array 2

Available Designs

- Hoyalux Array 2 VL, 11, 13, 15, 17
- Hoyalux Array 2 Wrap VL, 11, 13, 15, 17

Premium Single Vision

Hoya has driven single vision lens design innovation with a passion for finding the best vision solutions that deliver clear results. For practices that offer free form progressives, you should also consider offering free form single vision lenses to your patients and further differentiate your brand.



iD Single Vision™ Single Vision Perfected by Hoya

iD Single Vision is a bi-aspheric single vision lens made possible through Hoya's Integrated Dual Side free form technology providing expanded peripheral viewing, especially in higher prescriptions.

Design Benefits

- Optimized visual acuity and a crisper image perception
- Noticeably more relaxed vision thanks to precise and effortless focusing
- More accurate correction
- Provide OC and monocular PD measurement for exceptional results

SINGLE VISION

iD

Single Vision iQ™ Single Vision Lenses

Single Vision iQ combines a spherical front surface single vision lens with Hoya's free form design. Providing custom back surfacing for enhanced optical performance.

Design Benefits

- Lens optimized for all prescription powers to enhance visual acuity
- Visual optimization for all powers
- Noticeably reduced distortion, especially in peripheral viewing areas
- Provide OC and monocular PD measurement for exceptional results

SINGLE VISION

iQ



Our Eyes Weren't Made for Screens Sync III™ Lenses Are

Most people spend an average of 8-10 hours a day looking at digital screens, with peaks up to 15 hours a day.* Digital eye strain symptoms can present themselves in as few as 2 hours of digital screen viewing.† Sync III lenses have a slight power boost design that will support and relax your eye muscles, relieving eye strain to let you focus more easily. Sync III lenses work with any standard prescription.



Power Boost Design Variations



Free Form Backside Surfacing



Position of Wear and Frame Measurements

Three Boost Levels:

- Sync III 5 (+0.57D): Mild support for younger adults, including students
- Sync III 9 (+0.95D): Extra support for heavy screen use and moderate symptoms of digital eye strain
- Sync III 13 (+1.32D): Heavy screen use and significant symptoms of digital eye strain

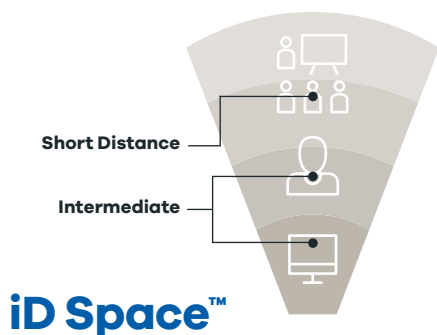
*Hoya Consumer Digital Behavior Study Available October 2017
†Ang C., Dinevski D., Vlasak N., Kok A Taking the strain. Optician. 05/2017, vol. 253, no. 6600, p.25-28



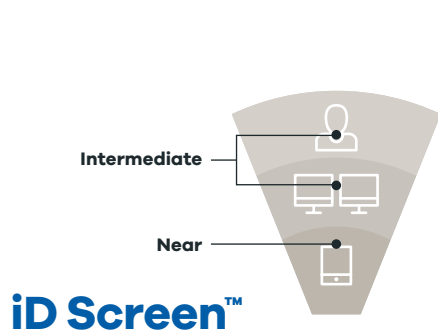
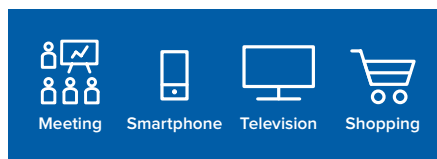
New Media Optics

65% of Americans report experiencing symptoms of digital eye strain. 27% of Americans do not know computer eyewear can protect against digital eye strain (DES).*

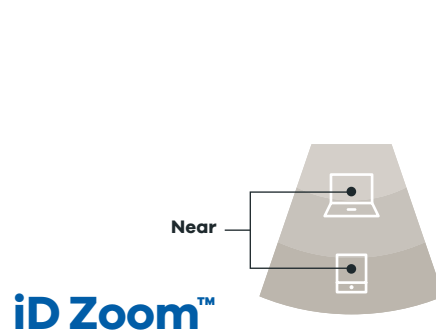
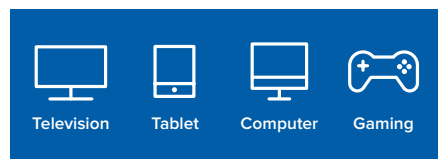
Hoya builds the bridge between technology and experience with our latest iD lenses designed for your digital lifestyle. The iD Space, Screen and Zoom are shaped on both the front and back surface for unparallelled workspace comfort.



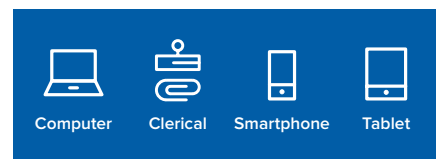
The ideal lens for performing activities where the focus is beyond a computer screen. This design allows for sharp far vision (up to 20 ft.) and provides clear vision at a close range.



Best choice for professions requiring maximum clarity at an intermediate distance like those working in stores and offices. This design is ideal for anyone working on dual monitors.



Perfect for laptop and hobbies requiring high levels of concentration and sharp vision at close range. Providing the widest possible near area and offering clarity at a shortened distance.



* Source: The Vision Council 2016. Digital Eye Strain Report 2016.

Tact® BKS

Progressive lenses designed for computer users and patients who engage in visually-intense work or hobbies.

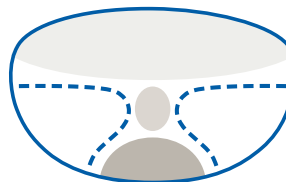
Design Benefits

- Full backside design
- Relieve symptoms related to digital eye strain
- Delivers exceptionally wide intermediate and near viewing zones with a minimum distance field of view

Available Designs

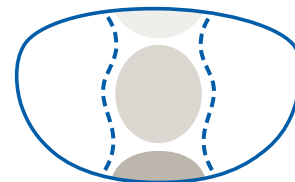
- Tact 40 BKS: provides 40% of the near Rx at the fitting point
- Tact 60 BKS: provides 60% of the near Rx at the fitting point

Everyday Progressive Example: BKS Progressive



Intermediate area not designed for long-term computer usage

Occupational/Office Lens Tact BKS



Larger intermediate area provides a more relaxed and comfortable visual experience

Viewing Areas: ■ Distance ■ Intermediate ■ Reading



Hoya Phoenix® The Perfect Combination of Features & Benefits

Phoenix is a very strong and reliable material, the ideal choice for your customers and their children when it comes to protecting their eyes. Patients want light-weight lenses along with crisp, clear vision. Only Phoenix delivers that, plus the ultimate combination of toughness and scratch resistance.

Lens Features

- The lightest lens material available
- UV Protection
- Superior tensile strength: withstands up to 180 lbs. of pulling force
- Abbe value of 43
- 60x more impact resistant than standard plastic, exceeding FDA impact guidelines
- Up to 20% thinner than standard plastic
- Chemical resistant
- Perfect for kids of all ages

1.59

Thinner and lighter than regular plastic lenses.

Lens Features

- Impact resistant
- Light
- UV protection

1.60

Premium-performing high-index lens material.

Lens Features

- Very thin and lightweight
- Extremely strong and flexible
- UV protection

1.67

Exceptionally thin, strong, and light design with superior optical clarity.

Lens Features

- Exceptionally thin
- 25% flatter than 1.60 or poly
- UV protection

1.70

Ultra-high index material with and unprecedented optical performance

Lens Features

- Extremely thin and lightweight
- 1.0 center thickness (minus lenses)
- 100% UV blocking up to 400 nm

1.74

The thinnest and flattest ultra high index lens material on the market.

Lens Features

- Nearly 50% thinner than plastic
- Nearly 5% thinner than 1.67
- UV protection

Clear Blue Filter

High-energy light protection in a clear, everyday polycarbonate lens.

Lens Features

- 100% UV blocking up to 400 nm
- Filters the most damaging, highest energy blue light
- Uncompromisingly clear lenses

Plastic 1.50 -6.00



Phoenix 1.53 -6.00



High-Index 1.60 -6.00



High-Index 1.67 -6.00



High-Index 1.70 -6.00



High-Index 1.74 -6.00



All data quoted for minus powers is for 65mm diameter lenses, and all data quoted for plus powers is for 60mm diameter lenses. The chart is for comparison purposes only. Actual lens results will differ based on individual prescription, personal measurements and frame selected.

Treatments



EX3+ Treatment



No Treatment

Now Available! EX3+™ with ISO-Certified Technology

Using Super Premium Anti-Reflective (AR) technologies, Hoya has made EX3 better with the addition of backside UV protection.

- Extreme scratch resistance, the only lens treatment that outperforms glass
- Extreme clean vision – oil, water and dirt resistant
- Extreme anti-reflection for maximum visual clarity



Backside UV Protection



Improved Night Time Vision



Scratch Resistant



Glare Resistant



Smudge Resistant



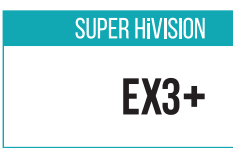
Water Resistant



Dust Resistant

ISO Lens Surface Protection*

*ISO Lens Surface Protection based on ISO 22196:2011.



Recharge®

Recharge filters blue light transmitted from the back-lit screens of digital devices. Perfect for patients who suffer from digital eye strain (DES).

- Filters blue light through a combination of absorption and reflection
- May help alleviate eye strain, fatigue, headaches, loss of focus and blurred vision (DES)
- Keeps eyes comfortable and refreshed
- Re-energizes focus



Blue Light Filtration



Scratch Resistant



Glare Resistant



Smudge Resistant



Water Resistant



Dust Resistant



Super HiVision®

Super HiVision offers your patients superior lens protection – reducing glare and light reflectance.

- Superior scratch resistant AR treatment



Improved Night Time Vision



Scratch Resistant



Glare Resistant



Smudge Resistant



Water Resistant



Dust Resistant





The Full Sensity® Family

Make your move towards Sensity light reactive lenses. They stand out with outstanding comfort in all different light situations.

Sensity® Fast



Cutting-Edge Light Reactive Lens Technology

The fastest Hoya light reactive lens technology available. Cutting-edge speed when fading back from dark to clear. Sensity Fast addresses the age-old patient objection of slow fade back speed. Differentiate your brand with light reactive lenses only you can provide.



Sensity®

Stand out with Outstanding Comfort and Performance

Sensity lenses darken outdoors and quickly fade back to exceptionally clear indoors, ensuring comfortable vision in different climates and seasons.

Sensity Features:

- Consistent performance in different climates and seasons thanks to Stabilight Technology
- Outstanding contrast and glare reduction with Sensity's three deep, natural colors

Patient Benefits:

- Darken outdoors quickly
- Fade back quickly to clear indoors
- 100% protection against UV rays
- Reduce glare



Sensity® Dark

The Next Step in Light Reactive Lenses

Sensity Dark delivers extra darkness outside and behind the car window, offering the performance your patients need for both indoors and outdoors.

Sensity Features:

- Solid performance in different climates and seasons thanks to Stabilight Technology
- Outstanding contrast and glare reduction with Sensity's three deep, natural colors

Patient Benefits:

- Lenses darken behind the car window
- Lenses become extra dark outside
- Fade back quickly to clear indoors
- 100% protection against UV rays
- Reduce glare



Sensity® Shine

Stand out with Extra Style

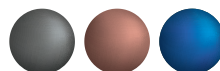
Sensity Shine lenses give your customers an exclusive look thanks to a mirror coating that is more intense in the light yet subtle when indoors.

Sensity Features:

- Solid performance in different climates and seasons thanks to Stabilight Technology
- Outstanding contrast and glare reduction with Sensity's three deep, natural colors

Patient Benefits:

- Darken outdoors quickly
- Lenses darken behind the car window
- Fade back quickly to clear indoors
- 100% protection against UV rays
- Reduce glare



Transitions™

light under control™



Transitions™ Signature® GEN8™

Our Best Everyday Lenses

- / Fully clear indoors
- / Darkens outdoors in seconds
- / Returns to clear faster than ever
- / Protects your eyes indoors & outdoors



Gray, Brown, or Graphite Green



STYLE COLORS

Available in Q1 2020
Sapphire, Amethyst,
Amber, and Emerald



Transitions™ XTRActive®

Our Best Lenses for Extra Protection, Even in the Car

- / Protects from the brightest sun outdoors and harsh artificial light indoors
- / Extra dark outdoors, even in hot temperatures
- / Clear indoors, with a hint of protective tint
- / Darkens behind the windshield



Gray, Brown, or Graphite Green



Style Mirrors: Gold, Silver Shadow,
Pink, Red, Green, and Blue



Transitions™ Vantage®

Our Best Lenses for Glare Reduction Outdoors

- / Extra dark with variable polarization
- / Adapts to match the level of glare
- / Noticeably crisper, sharper vision outdoors
- / Clear indoors with a hint of protective tint



Gray, with Variable
Polarization



Transitions™ Drivewear®

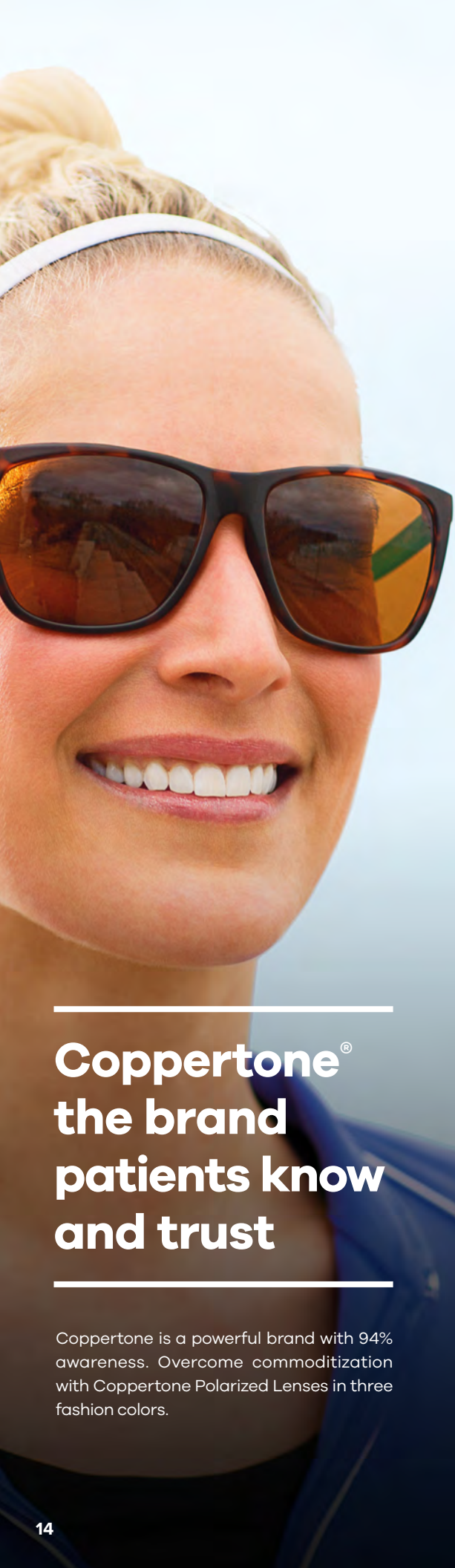
Our best lenses for behind the wheel

- / Darkens outdoors in seconds
- / Noticeably crisper, sharper vision outdoors
- / Activates behind the windshield
- / Olive Green indoors, not recommended for indoor use



Olive Green to Copper
to Dark Red-Brown



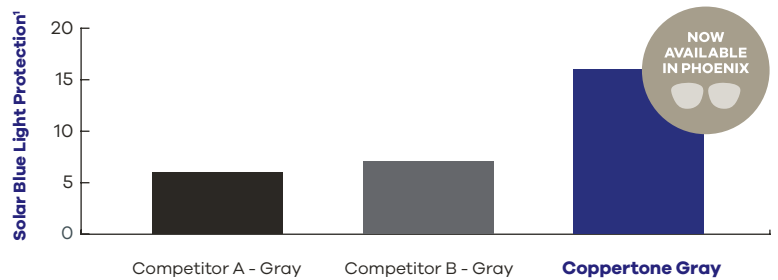


The ultimate protection under the sun for your patients

Coppertone Polarized Lenses offer a level of health protection that competitive brands simply can't match.

- The highest level of Solar Blue Light Protection¹
- The highest level of UV Protection
- Protects skin surrounding the eye from the sun's harmful effects²

2x Solar Blue Light Protection^{1*}



Coppertone the #1 Sun Protection Brand

Coppertone® Polarized Lenses stand up to the active lifestyles of today's health-conscious patients.



Recommended as an effective UV filter for the eyes and surrounding skin.

^{*}Compares Coppertone gray and green to competitive gray and green.

¹Blue Light Protection Value, VISION EASE 2015

²Skin Cancer Foundation

Coppertone® is a registered trademark of Bayer. ©VISION EASE. All rights reserved.

Coppertone® the brand patients know and trust

Coppertone is a powerful brand with 94% awareness. Overcome commoditization with Coppertone Polarized Lenses in three fashion colors.

Product Comparison Chart

Lens Designs

	Hoya Lens Designs	Hoya Concept and Benefits	Vision Plan Competitive Comparisons
iD	iD MyStyle 2	<ul style="list-style-type: none"> The pinnacle of personalization with unlimited design variations Utilizes an interactive consultation program to gather patient information, lifestyle requirements and wearing preferences to create a lens that is uniquely personalized Incorporates Integrated Dual Surface (iD) design technology and Binocular Harmonization Technology to accomplish ideal binocular vision for a truly personalized design Every pair is designed using Hoya's patented Binocular Eye Model™ and 3D Visual Acuity Simulation™ Available in four convenience options: Modern, Detail, Adventure, Stable 	<ul style="list-style-type: none"> Shamir Autograph® Intelligence™ Varilux® X 4D
iD	iD LifeStyle 3	<ul style="list-style-type: none"> Binocular Harmonization Technology takes into account the differences between right and left prescription to balance the design performance Integrated Dual Side design with standardized front vertical power distribution and customized back horizontal progression - reduces eye rotation between distance and near zones and provides wider fields of view Fully integrates both surfaces using View Xpansion Technology™ to minimize aberration Three designs: Indoor, Urban, Outdoor Option for position of wear measurements 	<ul style="list-style-type: none"> Unity® PLXpression Shamir Autograph® III Varilux® X Fit Zeiss® Progressive Individual® 2
iD	iD Space, iD Screen, iD Zoom	<ul style="list-style-type: none"> Relieves symptoms related to digital eye strain (DES) iD Space: The ideal lens for performing activities where the focus is beyond a computer screen iD Screen: The best choice for professions requiring maximum clarity at an intermediate distance like those working in stores and offices iD Zoom: Perfect for laptop and hobbies that require high levels of concentration and sharp vision at close range Best binocular vision with Hoya's Binocular Harmonization Technology 	<ul style="list-style-type: none"> Essilor® Computer Shamir Workspace™ Zeiss® OfficeLens Book, Desk, Room
BKS	Array 2 Array 2 Wrap	<ul style="list-style-type: none"> Binocular Harmonization Technology takes into account the differences between right and left prescription to balance the design performance Applies Hoya free form surfacing technology to the back side of ANY semi-finished single vision lens, in ANY material Variable corridor length offers customization for ergonomic considerations Array 2 Wrap provides compensated design for wrap frames 	<ul style="list-style-type: none"> Kodak DS II™ Shamir Autograph® II+ Shamir Autograph® II Attitude™ Varilux® Physio® W3+ / Stylistic Wrap Zeiss® Precision (Superb, Plus, Pure)
BKS	Summit ecp BKS Summit cd BKS	<ul style="list-style-type: none"> Design symmetry of nasal and temporal zones for: increased viewing comfort, better binocular vision, and reduction of uncomfortable feelings while in motion Effortless transition between zones to allow for more natural head and eye movement Summit cd BKS for smaller frames 	<ul style="list-style-type: none"> Varilux® Physio® DRx Zeiss® Choice Shamir Spectrum+™ Unity® PLXtra
BKS	Amplitude BKS Amplitude Mini BKS	<ul style="list-style-type: none"> Economical lenses to suit any budget Comfortable design to suit most lifestyle needs Wide fields of view with free form technology 	<ul style="list-style-type: none"> Kodak Precise®/PB/Short Shamir Element™ synchrony® Easy Adapt Varilux® Comfort® 2

Product Comparison Chart

Designs and Lens Treatment

	Lens Designs	Hoya Concept and Benefits	Vision Plan Competitive Comparisons
iD	iD Single Vision	<ul style="list-style-type: none"> Hoya's Integrated Dual Side free form technology Expanded peripheral viewing, especially in higher prescriptions Visual optimization for all powers Ideal combination of performance and cosmetics Higher visual performance 	<ul style="list-style-type: none"> Essilor® Eyezen™ +0 Shamir Autograph® II SV
iQ	Single Vision iQ	<ul style="list-style-type: none"> Backside design technology Visual optimization for all powers Calculated visual acuity at every point on the lens Wider, clearer visual field in all directions of sight 	<ul style="list-style-type: none"> Zeiss® Individual® SV Essilor® Eyezen™ +0 Shamir Autograph® II SV
BKS	Sync III	<ul style="list-style-type: none"> Sync lenses have the distance power for everyday use and a 'boost zone' in the lower portion of the lens The boost zone is an area with an increased amount of relaxing power, reducing eye strain during prolonged up close activities such as looking at digital screens, reading or any 'near task' activities Three support levels: Sync III 5 (+0.57), Sync III 9 (+0.95D) and Sync III 13 (+1.32D) 	<ul style="list-style-type: none"> Shamir Relax™ Eyezen™ +1, 2, 3, 4 Zeiss® Digital Lens Zeiss® EnergizeMe® SV
BKS	Tact 40/60 BKS	<ul style="list-style-type: none"> Relieves symptoms related to digital eye strain (DES) Provides extended focus lens design for near and intermediate viewing zones Delivers exceptionally wide intermediate and near viewing zones with optimized periphery 	<ul style="list-style-type: none"> Shamir Autograph® II - Office™ Zeiss® synchrony® Access

	Lens Treatments	Hoya Concept and Benefits	Vision Plan Competitive Comparisons
	Recharge	<ul style="list-style-type: none"> Reduces the amount of blue light that reaches the eyes emitted by most LED screens Greater comfort for prolonged amounts of time in front of back lit displays Includes the same scratch and smudge resistance benefits as EX3+ Substrate Matching Technology 	<ul style="list-style-type: none"> Crizal® Previncia™ Zeiss® Duravision® BlueProtect
	Super HiVision EX3 Family (EX3+ with ISO-Certified Technology, EX3+, EX3)	<ul style="list-style-type: none"> Hoya EX3+ with ISO-Certified Technology* Super HiVision EX3+: UV protection from backside reflections for eyes and surrounding skin Super HiVision EX3, EX3+, and EX3+ with ISO-Certified Technology all include: <ul style="list-style-type: none"> Extreme scratch resistance, the only lens treatment that outperforms glass Smudge resistant, eliminates glare and helps reduce eye fatigue Includes ViewProtect & Substrate Matching Technology 	<ul style="list-style-type: none"> Crizal® Sapphire™ UV Zeiss® DuraVision® Platinum
	Super HiVision	<ul style="list-style-type: none"> Superior scratch resistance Exceptional smudge resistance Includes ViewProtect & Substrate Matching Technology 	<ul style="list-style-type: none"> Crizal® Avancé™ UV Zeiss® DuraVision® Silver
	HiVision® View Protect®	<ul style="list-style-type: none"> Front and back scratch resistance Smudge resistant treatment ViewProtect "easy to clean" treatment 	<ul style="list-style-type: none"> Crizal® Alize™ UV Zeiss® DuraVision® Silver
	Sensity Family (Sensity, Sensity Shine, Sensity Dark)	<ul style="list-style-type: none"> Stabilight Technology™ ensures consistent performance in different climates and seasons Excellent contrast and glare reduction with Sensity's three deep, natural colors Exceptional optical quality and durability due to photochromic precision technology Darkens in the car (Sensity Dark only) 	<ul style="list-style-type: none"> Transitions® GEN 8™ Transitions® XTRActive® Zeiss® PhotoFusion®
	Sensity Fast	<ul style="list-style-type: none"> The fastest Hoya light reactive lens technology available Cutting-edge speed when fading back from dark to clear Better indoor clarity than Sensity family 	<ul style="list-style-type: none"> Unity® SunSync® Elite

*ISO Lens Surface Protection based on ISO 22196:2011.

Lens Availability Charts

Free Form

Free Form Progressives iD MyStyle 2 iD LifeStyle 3 Array 2 Array 2 Wrap

Minimum Fitting Height	Personalized to frame 14mm	Personalized to frame 14mm	Personalized to frame 14mm	Personalized to frame 14mm
Plastic 1.50	-8.00 to +6.00 Cyl. to -6.00 (+0.75 to +3.50)	-8.00 to +6.00 Cyl. to -6.00 (+0.75 to +3.50)	-10.00 to +6.00 Cyl. to -4.00 (+0.75 to +3.50)	-5.00 to +4.00 Cyl. to -4.00 (+0.75 to +3.50)
Plastic 1.50 Polarized			-10.00 to +3.75 Cyl. to -4.00 (+0.75 to +3.50)	-5.00 to +4.00 Cyl. to -4.00 (+0.75 to +3.50)
Plastic 1.50 Sensity	-8.00 to +6.00 Cyl. to -6.00 (+0.75 to +3.50) ●●●	-8.00 to +6.00 Cyl. to -6.00 (+0.75 to +3.50) ●●●	-8.00 to +6.00 Cyl. to -4.00 (+0.75 to +3.50) ●●●	-5.00 to +4.00 Cyl. to -4.00 (+0.75 to +3.50) ●●●
Plastic 1.50 Transitions*		-8.00 to +6.00 Cyl. to -6.00 (+0.75 to +3.50) ●●/X	-10.00 to +3.75 Cyl. to -4.00 (+0.75 to +3.50) ●●/X	-5.00 to +4.00 Cyl. to -4.00 (+0.75 to +3.50) ●●/X
Phoenix 1.53	-8.00 to +6.00 Cyl. to -6.00 (+0.75 to +3.50)	-8.00 to +6.00 Cyl. to -6.00 (+0.75 to +3.50)	-10.00 to +6.00 Cyl. to -4.00 (+0.75 to +3.50)	-5.00 to +4.00 Cyl. to -4.00 (+0.75 to +3.50)
Phoenix 1.53 Coppertone*			-12.00 to +6.00 (+0.75 to +3.50) ●●	-5.00 to +4.00 (+0.75 to +3.50) ●●
Phoenix 1.53 Polarized			-10.00 to +4.50 Cyl. to -4.00 (+0.75 to +3.50)	-5.00 to +4.00 Cyl. to -4.00 (+0.75 to +3.50)
Phoenix 1.53 Sensity	-8.00 to +6.00 Cyl. to -6.00 (+0.75 to +3.50) ●●●	-8.00 to +6.00 Cyl. to -6.00 (+0.75 to +3.50) ●●●	-10.00 to +6.00 Cyl. to -4.00 (+0.75 to +3.50) ●●●	-5.00 to +4.00 Cyl. to -4.00 (+0.75 to +3.50) ●●●
Phoenix 1.53 Transitions*		-8.00 to +6.00 Cyl. to -6.00 (+0.75 to +3.50) ●●/X	-10.00 to +6.00 Cyl. to -4.00 (+0.75 to +3.50) ●●/X	-5.00 to +4.00 Cyl. to -4.00 (+0.75 to +3.50) ●●/X
BluTech 1.56 (Indoor/Outdoor)			-10.00 to +6.00 Cyl. to -4.00 (+0.75 to +3.50)	-5.00 to +4.00 Cyl. to -4.00 (+0.75 to +3.50)
Poly 1.59		-6.00 to +6.00 Cyl. to -4.00 (+1.00 to +3.00)	-13.00 to +6.00 Cyl. to -4.00 (+0.75 to +3.50)	-6.00 to +4.00 Cyl. to -4.00 (+0.75 to +3.50)
Clear Blue Filter 1.59			-13.00 to +6.00 Cyl. to -4.00 (+0.75 to +3.50)	-6.00 to +4.00 Cyl. to -4.00 (+0.75 to +3.50)
Poly 1.59 Polarized		-6.00 to +6.00 Cyl. to -4.00 (+1.00 to +3.00) ●	-13.00 to +5.25 Cyl. to -4.00 (+0.75 to +3.50)	-6.00 to +4.00 Cyl. to -4.00 (+0.75 to +3.50)
Poly 1.59 Coppertone*			-12.00 to +6.00 (+0.75 to +3.50) ●●●	-12.00 to +6.00 (+0.75 to +3.50) ●●●
Poly 1.59 Sensity	-6.00 to +6.00 Cyl. to -4.00 (+1.00 to +3.00) ●●	-6.00 to +6.00 Cyl. to -4.00 (+1.00 to +3.00) ●●●	-10.00 to +6.00 Cyl. to -4.00 (+0.75 to +3.50) ●●●/SFG	-6.00 to +4.00 Cyl. to -4.00 (+0.75 to +3.50) ●●●/SFG
Poly 1.59 Transitions*		-6.00 to +6.00 Cyl. to -4.00 (+1.00 to +3.00) ●●	-13.00 to +5.25 Cyl. to -4.00 (+0.75 to +3.50) ●●/X	-6.00 to +4.00 Cyl. to -4.00 (+0.75 to +3.50) ●●/X
Hi-Index 1.60	-11.00 to +8.00 Cyl. to -6.00 (+0.75 to +3.50)	-11.00 to +8.00 Cyl. to -6.00 (+0.75 to +3.50)	-10.00 to +6.00 Cyl. to -4.00 (+0.75 to +3.50)	-6.00 to +4.00 Cyl. to -4.00 (+0.75 to +3.50)
Hi-Index 1.60 Sensity	-11.00 to +8.00 Cyl. to -6.00 (+0.75 to +3.50) ●●●	-11.00 to +8.00 Cyl. to -6.00 (+0.75 to +3.50) ●●●	-10.00 to +6.00 Cyl. to -4.00 (+0.75 to +3.50) ●●●	
Hi-Index 1.60 Transitions*			-10.00 to +6.00 Cyl. to -4.00 (+0.75 to +3.50) ●●	-6.00 to +4.00 Cyl. to -4.00 (+0.75 to +3.50) ●●
Hi-Index 1.67	-13.00 to +8.00 Cyl. to -6.00 (+0.75 to +3.50)	-13.00 to +8.00 Cyl. to -6.00 (+0.75 to +3.50)	-13.00 to +7.50 Cyl. to -4.00 (+0.75 to +3.50)	-6.00 to +4.00 Cyl. to -4.00 (+0.75 to +3.50)
Hi-Index 1.67 Polarized			-13.00 to +6.00 Cyl. to -4.00 (+0.75 to +3.50)	-6.00 to +4.00 Cyl. to -4.00 (+0.75 to +3.50)
Hi-Index 1.67 Sensity	-13.00 to +8.00 Cyl. to -6.00 (+0.75 to +3.50) ●●●	-13.00 to +8.00 Cyl. to -6.00 (+0.75 to +3.50) ●●●	-13.00 to +7.50 Cyl. to -4.00 (+0.75 to +3.50) ●●●	-6.00 to +4.00 Cyl. to -4.00 (+0.75 to +3.50) ●●●
Hi-Index 1.67 Transitions*		-13.00 to +8.00 Cyl. to -6.00 (+0.75 to +3.50) ●●	-13.00 to +7.50 Cyl. to -4.00 (+0.75 to +3.50) ●●/X	-6.00 to +4.00 Cyl. to -4.00 (+0.75 to +3.50) ●●/X
Hi-Index 1.70/1.74	-13.00 to +8.00 Cyl. to -6.00 (+0.75 to +3.50) (1.74)	-13.00 to +8.00 Cyl. to -6.00 (+0.75 to +3.50) (1.74)	-13.00 to +8.00 Cyl. to -4.00 (+0.75 to +3.50) (1.70 & 1.74)	-6.00 to +4.00 Cyl. to -4.00 (+0.75 to +3.50) (1.70 & 1.74)

X: Transitions® XTRActive® SFG: Sensity Fast Gray

Lens Availability Charts

Free Form

Free Form Progressives

Amplitude HD3/Mini

Amplitude BKS/Mini

Summit ecp/cd BKS

Minimum Fitting Height	18mm/14mm	18mm/14mm	19mm/14mm
Plastic 1.50	-8.00 to +6.00 Cyl. to -6.00 (+0.75 to +3.50)	-10.00 to +6.00 Cyl. to -4.00 (+0.75 to +3.50)	-10.00 to +6.00 Cyl. to -4.00 (+0.75 to +3.50)
Plastic 1.50 Polarized		-10.00 to +3.75 Cyl. to -4.00 (+0.75 to +3.50)	-10.00 to +3.75 Cyl. to -4.00 (+0.75 to +3.50)
Plastic 1.50 Sensity	-8.00 to +6.00 Cyl. to -6.00 (+0.75 to +3.50) ●●●	-8.00 to +6.00 Cyl. to -4.00 (+0.75 to +3.50) ●●●	-8.00 to +6.00 Cyl. to -4.00 (+0.75 to +3.50) ●●●
Plastic 1.50 Transitions®	-8.00 to +6.00 Cyl. to -6.00 (+0.75 to +3.50) ●●/X	-10.00 to +3.75 Cyl. to -4.00 (+0.75 to +3.50) ●●/X	-10.00 to +3.75 Cyl. to -4.00 (+0.75 to +3.50) ●●/X
Phoenix 1.53	-8.00 to +6.00 Cyl. to -6.00 (+0.75 to +3.50)	-10.00 to +6.00 Cyl. to -4.00 (+0.75 to +3.50)	-10.00 to +6.00 Cyl. to -4.00 (+0.75 to +3.50)
Phoenix 1.53 Coppertone®			-12.00 to +6.00 (+0.75 to +3.50) ●●
Phoenix 1.53 Polarized		-10.00 to +4.50 Cyl. to -4.00 (+0.75 to +3.50)	-10.00 to +4.50 Cyl. to -4.00 (+0.75 to +3.50)
Phoenix 1.53 Sensity	-8.00 to +6.00 Cyl. to -6.00 (+0.75 to +3.50) ●●●	-10.00 to +6.00 Cyl. to -4.00 (+0.75 to +3.50) ●●●	-10.00 to +6.00 Cyl. to -4.00 (+0.75 to +3.50) ●●●
Phoenix 1.53 Transitions®	-8.00 to +6.00 Cyl. to -6.00 (+0.75 to +3.50) ●●/X	-10.00 to +6.00 Cyl. to -4.00 (+0.75 to +3.50) ●●/X	-10.00 to +6.00 Cyl. to -4.00 (+0.75 to +3.50) ●●/X
BluTech 1.56 (Indoor/Outdoor)			-10.00 to +6.00 Cyl. to -4.00 (+0.75 to +3.50)
Poly 1.59	-6.00 to +6.00 Cyl. to -4.00 (+1.00 to +3.00)	-13.00 to +6.00 Cyl. to -4.00 (+0.75 to +3.50)	-13.00 to +6.00 Cyl. to -4.00 (+0.75 to +3.50)
Clear Blue Filter 1.59			-13.00 to +6.00 Cyl. to -4.00 (+0.75 to +3.50)
Poly 1.59 Polarized	-6.00 to +6.00 Cyl. to -4.00 (+1.00 to +3.00) ●	-13.00 to +5.25 Cyl. to -4.00 (+0.75 to +3.50)	-13.00 to +5.25 Cyl. to -4.00 (+0.75 to +3.50)
Poly 1.59 Coppertone®			-12.00 to +6.00 (+0.75 to +3.50) ●●●
Poly 1.59 Sensity	-6.00 to +6.00 Cyl. to -4.00 (+1.00 to +3.00) ●●●	-10.00 to +6.00 Cyl. to -4.00 (+0.75 to +3.50) ●●●/SFG	-10.00 to +6.00 Cyl. to -4.00 (+0.75 to +3.50) ●●●/SFG
Poly 1.59 Transitions®	-6.00 to +6.00 Cyl. to -4.00 (+1.00 to +3.00) ●	-13.00 to +5.25 Cyl. to -4.00 (+0.75 to +3.50) ●●/X	-13.00 to +5.25 Cyl. to -4.00 (+0.75 to +3.50) ●●/X
Hi-Index 1.60	-11.00 to +8.00 Cyl. to -6.00 (+0.75 to +3.50)	-10.00 to +6.00 Cyl. to -4.00 (+0.75 to +3.50)	-10.00 to +6.00 Cyl. to -4.00 (+0.75 to +3.50)
Hi-Index 1.60 Sensity		-10.00 to +6.00 Cyl. to -4.00 (+0.75 to +3.50) ●●	
Hi-Index 1.60 Transitions®	-11.00 to +8.00 Cyl. to -6.00 (+0.75 to +3.50) ●●	-10.00 to +6.00 Cyl. to -4.00 (+0.75 to +3.50) ●●	-10.00 to +6.00 Cyl. to -4.00 (+0.75 to +3.50) ●●
Hi-Index 1.67	-13.00 to +8.00 Cyl. to -6.00 (+0.75 to +3.50)	-13.00 to +7.50 Cyl. to -4.00 (+0.75 to +3.50)	-13.00 to +7.50 Cyl. to -4.00 (+0.75 to +3.50)
Hi-Index 1.67 Polarized		-13.00 to +6.00 Cyl. to -4.00 (+0.75 to +3.50)	-13.00 to +6.00 Cyl. to -4.00 (+0.75 to +3.50)
Hi-Index 1.67 Sensity	-13.00 to +8.00 Cyl. to -6.00 (+0.75 to +3.50) ●●●	-13.00 to +7.50 Cyl. to -4.00 (+0.75 to +3.50) ●●●	-13.00 to +7.50 Cyl. to -4.00 (+0.75 to +3.50) ●●●
Hi-Index 1.67 Transitions®	-13.00 to +8.00 Cyl. to -6.00 (+0.75 to +3.50) ●●	-13.00 to +7.50 Cyl. to -4.00 (+0.75 to +3.50) ●●/X	-13.00 to +7.50 Cyl. to -4.00 (+0.75 to +3.50) ●●/X
Hi-Index 1.70/1.74		-13.00 to +8.00 Cyl. to -4.00 (+0.75 to +3.50) (1.70 & 1.74)	-13.00 to +8.00 Cyl. to -4.00 (+0.75 to +3.50) (1.70 & 1.74)

X: Transitions® XTRActive® SFG: Sensity Fast Gray

Lens Availability Charts

SV, Bifocal & New Media Optics

Premium SV, Bifocal & New Media Optics

iD Single Vision

Single Vision/iQ

ST28 iQ™/ST28

iD Space, Screen, Zoom

Tact 40/60 BKS

Sync III

Minimum Fitting Height				Personalized to frame 18mm	18mm	14mm
Plastic 1.50		-10.00 to +10.00 Cyl. to -6.00	-10.00 to +6.00 Cyl. to -4.00 (+0.75 to +3.50)	-8.00 to +5.00 Cyl. to -6.00 (+1.00 to +3.50)	-10.00 to +6.00 Cyl. to -4.00 (+0.75 to +3.50)	-10.00 to +6.00 Cyl. to -6.00
Plastic 1.50 Polarized						-10.00 to +6.00 Cyl. to -4.00
Plastic 1.50 Sensity		-10.00 to +4.00 Cyl. to -6.00 ●●●			-8.00 to +6.00 Cyl. to -4.00 (+0.75 to +3.50) ●●●	-8.00 to +6.00 Cyl. to -6.00 ●●●
Plastic 1.50 Transitions®		-8.00 to +9.00 Cyl. to -4.00 ●●/X	-8.00 to +6.00 Cyl. to -4.00 (+1.00 to +3.00) ●●/X		-10.00 to +3.75 Cyl. to -4.00 (+0.75 to +3.50) ●●	-10.00 to +6.00 Cyl. to -6.00 ●●/X
Phoenix 1.53		-13.00 to +9.00 Cyl. to -6.00	-8.00 to +6.00 Cyl. to -4.00 (+1.00 to +3.00) ●●/X	-8.00 to +5.00 Cyl. to -6.00 (+1.00 to +3.50)	-10.00 to +6.00 Cyl. to -4.00 (+0.75 to +3.50)	-10.00 to +6.00 Cyl. to -6.00
Phoenix 1.53 Coppertone®		-12.00 to +6.00 ●●				
Phoenix 1.53 Polarized						-10.00 to +4.50 Cyl. to -4.00
Phoenix 1.53 Sensity		-13.00 to +9.00 Cyl. to -6.00 ●●●		-8.00 to +5.00 Cyl. to -6.00 (+1.00 to +3.50) ●●●	-10.00 to +6.00 Cyl. to -4.00 (+0.75 to +3.50) ●●●	-10.00 to +6.00 Cyl. to -6.00 ●●●
Phoenix 1.53 Transitions®		-13.00 to +9.00 Cyl. to -4.00 ●●/X	-9.00 to +7.00 Cyl. to -4.00 (+1.00 to +3.50) ●●		-10.00 to +6.00 Cyl. to -4.00 (+0.75 to +3.50) ●●	-10.00 to +6.00 Cyl. to -6.00 ●●/X
BluTech 1.56 (Indoor/Outdoor)		-8.00 to +7.00 Cyl. to -4.00			-10.00 to +6.00 Cyl. to -4.00 (+0.75 to +3.50)	-10.00 to +6.00 Cyl. to -4.00
Poly 1.59		-10.00 to +6.00 Cyl. to -4.00	-8.00 to +6.00 (+1.00 to +3.00)		-13.00 to +6.00 Cyl. to -4.00 (+0.75 to +3.50)	-13.00 to +6.00 Cyl. to -6.00
Clear Blue Filter 1.59		-10.00 to +6.00 Cyl. to -4.00			-13.00 to +6.00 Cyl. to -4.00 (+0.75 to +3.50)	-13.00 to +6.00 Cyl. to -6.00
Poly 1.59 Polarized		-9.00 to +6.00 Cyl. to -4.00				-13.00 to +6.00 Cyl. to -6.00 ●●
Poly 1.59 Coppertone®		-12.00 to +6.00 ●●●				
Poly 1.59 Sensity		-9.00 to +6.00 Cyl. to -4.00 ●●●/SFG			-10.00 to +6.00 Cyl. to -4.00 (+0.75 to +3.50) ●●●/SFG	-13.00 to +6.00 Cyl. to -6.00 ●●●/SFG
Poly 1.59 Transitions®		-6.00 to +6.00 Cyl. to -4.00 ●●/X			-13.00 to +5.25 Cyl. to -4.00 (+0.75 to +3.50) ●●	-13.00 to +5.25 Cyl. to -4.00 ●●/X
Hi-Index 1.60	-10.00 to +8.00 Cyl. to -4.00	-13.00 to +8.00 Cyl. to -4.00		-11.00 to +7.00 Cyl. to -6.00 (+1.00 to +3.50)	-10.00 to +6.00 Cyl. to -4.00 (+0.75 to +3.50)	-10.00 to +6.00 Cyl. to -6.00
Hi-Index 1.60 Sensity	-10.00 to +8.00 Cyl. to -4.00 ●●●	-13.00 to +6.50 Cyl. to -4.00 ●●●			-10.00 to +6.00 Cyl. to -4.00 (+0.75 to +3.50) ●●●	-10.00 to +6.00 Cyl. to -6.00 ●●●
Hi-Index 1.60 Transitions®		-10.00 to +8.00 Cyl. to -4.00 ●●			-10.00 to +6.00 Cyl. to -4.00 (+0.75 to +3.50) ●●	-10.00 to +6.00 Cyl. to -6.00 ●●
Hi-Index 1.67	-15.00 to +10.00 Cyl. to -4.00	-15.00 to +8.00 Cyl. to -4.00		-13.00 to +7.00 Cyl. to -6.00 (+1.00 to +3.50)	-13.00 to +7.50 Cyl. to -4.00 (+0.75 to +3.50)	-13.00 to +7.50 Cyl. to -6.00
Hi-Index 1.67 Polarized		-15.00 to +10.00 Cyl. to -4.00 ●●				-13.00 to +6.00 Cyl. to -4.00
Hi-Index 1.67 Sensity	-15.00 to +10.00 Cyl. to -4.00 ●●●	-15.00 to +8.00 Cyl. to -4.00 ●●●			-13.00 to +7.50 Cyl. to -4.00 (+0.75 to +3.50) ●●●	-13.00 to +7.50 Cyl. to -6.00 ●●●
Hi-Index 1.67 Transitions®		-10.00 to +8.00 Cyl. to -4.00 ●●			-13.00 to +7.50 Cyl. to -4.00 (+0.75 to +3.50) ●●	-13.00 to +7.50 Cyl. to -6.00 ●●/X
Hi-Index 1.70/1.74	-15.00 to +10.00 Cyl. to -4.00 (1.70)	-15.00 to +10.00 Cyl. to -4.00 (1.70)				-13.00 to +8.00 Cyl. to -6.00 (1.74)

X: Transitions® XTRActive® SFG: Sensity Fast Gray

AR Technology Reference Guide

Key	EX3+ with ISO-Certified Technology*				EX3+ & EX3				Recharge				Super HiVision				HiVision w/VP			
Warranty	2 Years/Unlimited				2 Years/Unlimited				2 Years/Unlimited				2 Years/Unlimited				2 Years/2 Times			
Designs	Plastic	Plastic Sensity	Plastic Transitions	Plastic Polarized	Phoenix	Phoenix Sensity	Phoenix Transitions	Phoenix Polarized	Poly	Poly Sensity	Poly Transitions	Poly Polarized	Hi Index	Hi Index Sensity	Hi Index Transitions	Hi Index	Hi Index Sensity	Hi Index Transitions	Hi Index	
Refractive Index	1.50	1.50	1.50	1.50	1.53	1.53	1.53	1.53	1.59	1.59	1.59	1.59	1.60	1.60	1.60	1.67	1.67	1.67	1.67	1.70 1.74
iD MyStyle 2	■ ■ ■ ■	■ ■ ■ ■			■ ■ ■ ■	■ ■ ■ ■			■ ■ ■ ■	■ ■ ■ ■			■ ■ ■ ■	■ ■ ■ ■		■ ■ ■ ■	■ ■ ■ ■		■ ■ ■ ■	■ ■ ■ ■
iD LifeStyle 3	■ ■ ■ ■	■ ■ ■ ■	■ ■ ■ ■		■ ■ ■ ■	■ ■ ■ ■	■ ■ ■ ■		■ ■ ■ ■	■ ■ ■ ■	■ ■ ■ ■	■ ■ ■ ■	■ ■ ■ ■	■ ■ ■ ■	■ ■ ■ ■	■ ■ ■ ■	■ ■ ■ ■	■ ■ ■ ■	■ ■ ■ ■	■ ■ ■ ■
Array 2/W**	■ ■ ■ ■	■ ■ ■ ■	■ ■ ■ ■	■ ■ ■ ■	■ ■ ■ ■	■ ■ ■ ■	■ ■ ■ ■	■ ■ ■ ■	■ ■ ■ ■	■ ■ ■ ■	■ ■ ■ ■	■ ■ ■ ■	■ ■ ■ ■	■ ■ ■ ■	■ ■ ■ ■	■ ■ ■ ■	■ ■ ■ ■	■ ■ ■ ■	■ ■ ■ ■	■ ■ ■ ■
iD Space, Screen, Zoom	■ ■ ■ ■				■ ■ ■ ■	■ ■ ■ ■							■ ■ ■ ■			■ ■ ■ ■				
Tact 40/60 BKS	■ ■ ■ ■	■ ■ ■ ■	■ ■ ■ ■		■ ■ ■ ■	■ ■ ■ ■	■ ■ ■ ■		■ ■ ■ ■	■ ■ ■ ■	■ ■ ■ ■		■ ■ ■ ■	■ ■ ■ ■	■ ■ ■ ■	■ ■ ■ ■	■ ■ ■ ■	■ ■ ■ ■	■ ■ ■ ■	
Sync III	■ ■ ■ ■	■ ■ ■ ■	■ ■ ■ ■	■ ■ ■ ■	■ ■ ■ ■	■ ■ ■ ■	■ ■ ■ ■	■ ■ ■ ■	■ ■ ■ ■	■ ■ ■ ■	■ ■ ■ ■	■ ■ ■ ■	■ ■ ■ ■	■ ■ ■ ■	■ ■ ■ ■	■ ■ ■ ■	■ ■ ■ ■	■ ■ ■ ■	■ ■ ■ ■	■ ■ ■ ■
iD Single Vision													■ ■ ■ ■	■ ■ ■ ■		■ ■ ■ ■	■ ■ ■ ■		■ ■ ■ ■	■ ■ ■ ■
Single Vision IQ	■ ■ ■ ■	■ ■ ■ ■	■ ■ ■ ■	■ ■ ■ ■	■ ■ ■ ■	■ ■ ■ ■	■ ■ ■ ■	■ ■ ■ ■	■ ■ ■ ■	■ ■ ■ ■	■ ■ ■ ■	■ ■ ■ ■		■ ■ ■ ■		■ ■ ■ ■	■ ■ ■ ■	■ ■ ■ ■	■ ■ ■ ■	■ ■ ■ ■
ST28 IQ	■ ■ ■ ■		■ ■ ■ ■		■ ■ ■ ■		■ ■ ■ ■					■ ■ ■ ■								
Refractive Index	1.50	1.50	1.50	1.50	1.53	1.53	1.53	1.53	1.59	1.59	1.59	1.59	1.60	1.60	1.60	1.66 1.67	1.66 1.67	1.66 1.67	1.66 1.67	1.70
SV	■ ■ ■ ■	■ ■ ■ ■	■ ■ ■ ■	■ ■ ■ ■	■ ■ ■ ■	■ ■ ■ ■	■ ■ ■ ■	■ ■ ■ ■	■ ■ ■ ■	■ ■ ■ ■	■ ■ ■ ■	■ ■ ■ ■	■ ■ ■ ■	■ ■ ■ ■	■ ■ ■ ■	■ ■ ■ ■	■ ■ ■ ■	■ ■ ■ ■	■ ■ ■ ■	■ ■ ■ ■
Aspheric-SV	■ ■ ■ ■		■ ■ ■ ■		■ ■ ■ ■	■ ■ ■ ■	■ ■ ■ ■		■ ■ ■ ■		■ ■ ■ ■	■ ■ ■ ■	■ ■ ■ ■	■ ■ ■ ■	■ ■ ■ ■	■ ■ ■ ■	■ ■ ■ ■	■ ■ ■ ■	■ ■ ■ ■	■ ■ ■ ■
ST28	■ ■ ■ ■		■ ■ ■ ■	■ ■ ■ ■	■ ■ ■ ■		■ ■ ■ ■		■ ■ ■ ■											
ST35	■ ■ ■ ■			■ ■ ■ ■					■ ■ ■ ■											
RD22	■ ■ ■ ■																			
RD24	■ ■ ■ ■		■ ■ ■ ■																	
STT7X28	■ ■ ■ ■		■ ■ ■ ■	■ ■ ■ ■					■ ■ ■ ■											
STT8X35	■ ■ ■ ■		■ ■ ■ ■	■ ■ ■ ■					■ ■ ■ ■											

*EX3+ with ISO-Certified Technology is not available in Sensity Green, Sensity Shine, Sensity Dark (1.53 and 1.60), BluTech, or Sensity Dark in iD LifeStyle 2 and iD LifeStyle 3 designs. Recharge, Super HiVision EX3+ and Super HiVision automatically include the ViewProtect Performance.
 **Array 2 Wrap 1.74 only available in PAV or PAR.

Hoya Packages



Hoya Super Single Vision Package

Leveraging Hoya's best-in-class technology for your single vision patients.



Hoya New Media Optics Package

How many hours do your patients spend looking at screens every day? If it's 2 hours or more, they may be experiencing digital eye strain.



Hoya Sun Package

Sun solutions because sun protection is not just for summer anymore.



Hoya Progressive Lens Package

Leveraging Hoya's patented Binocular Harmonization Technology (BHT) to create lenses designed to help your patient's eyes work better together.

Contact your Territory Sales Manager for more information about these Hoya Package Programs!

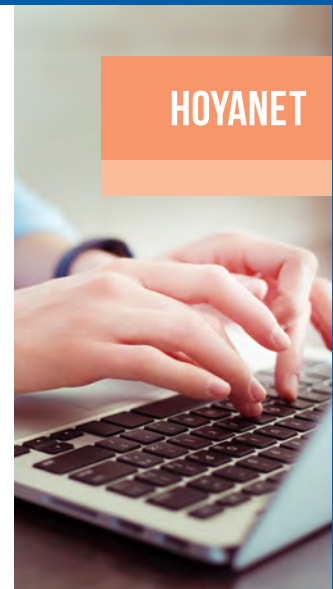
Grow your business today by visiting our online shopping portal
We offer a large selection of sales, marketing & communication tools and white papers to help you succeed

- New patient brochures
- Dispensing mats
- Lens samples and displays (Sensity, EX3+, etc...)
- Hoya Diamond Tint Kit and tint books
- Hoya white papers

Don't have a login, go to hoyanetusa.com and use the register section to create a new account. Select Eye Care Professional in the drop down list and follow the instructions.

www.hoyanetusa.com

Forgot your password? Use the website to retrieve your password, enter your email in the box and select retrieve. If you don't receive an email, check your junk folder. The email will notify you of your password or if you are not registered on the website.



The Hoya Hub experience is here!
Unlock your experience today.

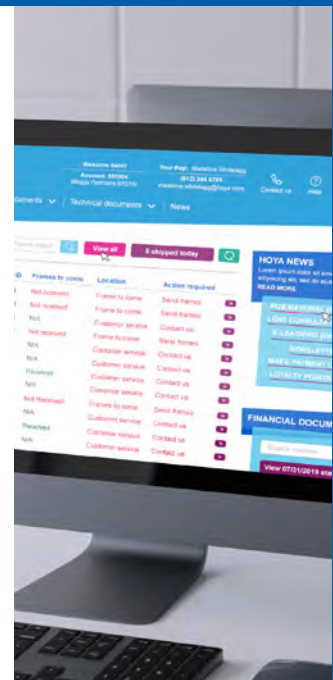
Exciting news! Ally of the ECP Hoya Vision Care consistently brings you first-to-market technology. This time our technology will enhance your customer service experience with The Hoya Hub!

- All job statuses
- Invoices & statements
- Hoya Honors Program
- Online education
- Order brochures and sales materials

All via one web site [www.hoyacenter.us] and ONLY ONE log in. You will no longer need to know multiple web sites, user names or passwords.

Everything you do with Hoya is now in one place.
Contact your Hoya sales representative to get started today.

www.hoyavisionhub.com



 **LinkedIn:** [linkedin.com/company/hoya-vision-care](https://www.linkedin.com/company/hoya-vision-care)

 **Facebook:** [facebook.com/hoyavision](https://www.facebook.com/hoyavision)

 **Twitter:** twitter.com/ProfMurrayHoya

 **Instagram:** [instagram.com/hoya_vision_care](https://www.instagram.com/hoya_vision_care)

 **Vimeo:** vimeo.com/user7919795

 **Hoya Blog:** blog.hoyavision.com/en-us/eye-care-professionals

 **For more information contact us at:** sales.support@hoya.com

For more information visit www.hoyavision.com or contact your sales representative.

©2020 Hoya Corporation. All rights reserved. Hoyalux iD MyStyle, Hoyalux iD LifeStyle, Hoyalux Array, Tact, Phoenix, Super HiVision, Super HiVision EX3, Sensity, View Protect, Hoyalux Summit, Recharge, HiVision and Amplitude are registered trademarks of Hoya Corporation. EX3+, iD Single Vision, Single Vision iQ, Sync III, Integrated Dual Surface, Integrated Dual Side, Binocular Harmonization Technology, View Xpansion Technology, Stabilight Technology, Binocular Eye Model, 3D Visual Acuity Simulation, ST28 iQ, iD Space, iD Screen and iD Zoom are trademarks of Hoya Corporation. Transitions, Transitions Signature, XTRActive and Vantage are registered trademarks, and the Transitions logo is a trademark of Transitions Optical, Inc. used under license by Transitions Optical Limited. GEN 8 and Light under control are registered trademarks of Transitions Optical Limited. All other trademarks, registered trademarks and copyrights are the property of their respective owners. HRTG-10: 10.20