

Aluminum Omni Steps

The perfect light-weight
heavy-duty solution



Completely adjustable, always OSHA compliant

Omni Stairs are adjustable work platforms with rails that are fully adjustable between the two specified heights. For example, the 21" – 26" step system can be set to meet any threshold height within that range. Our Fixed Industrial Stairs have equal step riser heights and two-line rail systems to make sure employees are safe while entering and exiting any modular office and more.

How Omni works

The Omni Step uses a pivoting riser assembly to adjust the step to any height within the two outer limits as the individual step heights grow or shrink equally. Set the adjustable platform at the threshold, attach the step riser to the platform, and let the step pivot down to the ground.

The Upside Features



Non-slip

Our steps use a knurled, non-slip extruded decking for maximum foot traction.



Fast installation

Our product is prefabricated and simply bolts together for a less costly and timely installation.



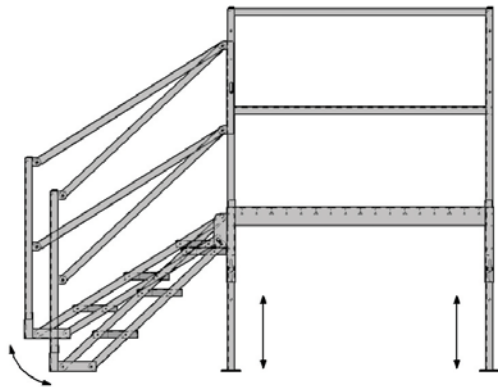
Leveling legs

Each platform is designed with independently adjustable legs to cover the entire range of step heights.



Pivot adjusting stairs

Pivoting steps make the Omni Step the perfect solution for uneven terrain on any project site.

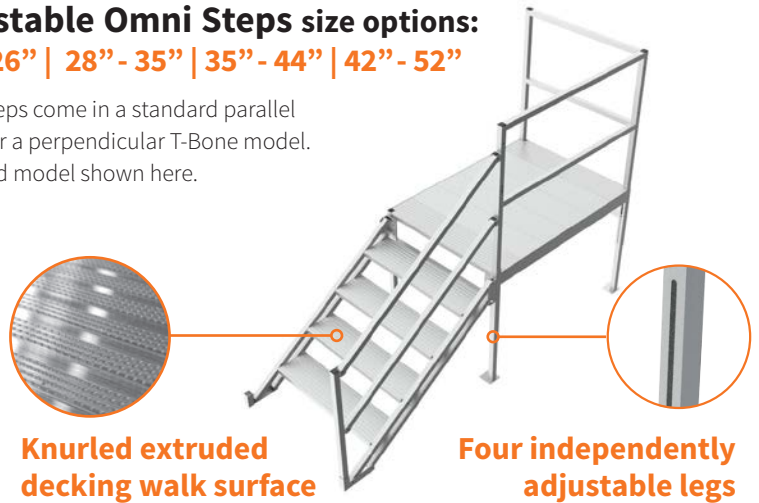


The adjustable legs and pivoting steps make the Omni Step the perfect solution for uneven terrain on any project site.

Adjustable Omni Steps size options:

21" - 26" | 28" - 35" | 35" - 44" | 42" - 52"

Omni steps come in a standard parallel model or a perpendicular T-Bone model. Standard model shown here.



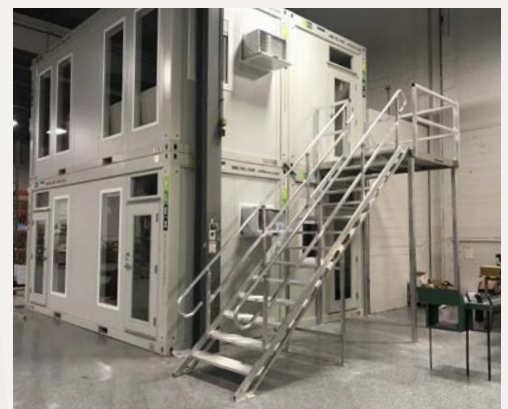
Knurled extruded decking walk surface

Four independently adjustable legs



8.5' - 10.5 adjustable Omni Step

Our Adjustable OSHA Stairways are flex-style, industrial stairs with two-line rails. The stair system adjusts between 8.5' to 10.5' so that it can accommodate any second story office or mezzanine when the floor height is within that range.



UPS0921_OmniSteps_OSHA_SellSheet