



# Engineered for performance

**Memaplex™ advanced strength polymer** created from an exclusive composition of the most sophisticated polyolefins and rubber additives, expertly blended for unequalled strength and flexibility.

**Unrivalled recovery** through a unique built-in memory that allows the guardrail to flex, cushion and reform repeatedly upon impact, saving vast amounts in guardrail and vehicle repairs.

**Huge return on investment** from incident prevention and downtime avoidance as rails, vehicles, floors and infrastructure do not need replacing or repair.

**Self colored and UV stabilized** for continued high visibility and long lasting aesthetics with no repainting.

**Ultra-low maintenance** material is chemical and water resistant, non-corrosive, non-scratch and self colored so no repainting, rusting, flaking or corrosion.

**Energy absorption system** dissipates impact forces through the guardrail and away from floors and fixings, preventing costly damage.

Hygiene seals remove ingress points.

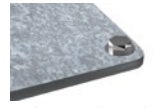
**Multi-directional system** ensures a streamlined fit around any column shape and any column location.

Zinc nickel, electrophoretic coating on base plates as standard, provides advanced protection against corrosion damage.

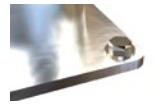
## ADDITIONAL BASE OPTIONS



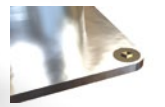
Countersunk Bolts



Galvanized Steel



Stainless Steel 316 Standard



Stainless Steel 316 Countersunk

## Technical Information

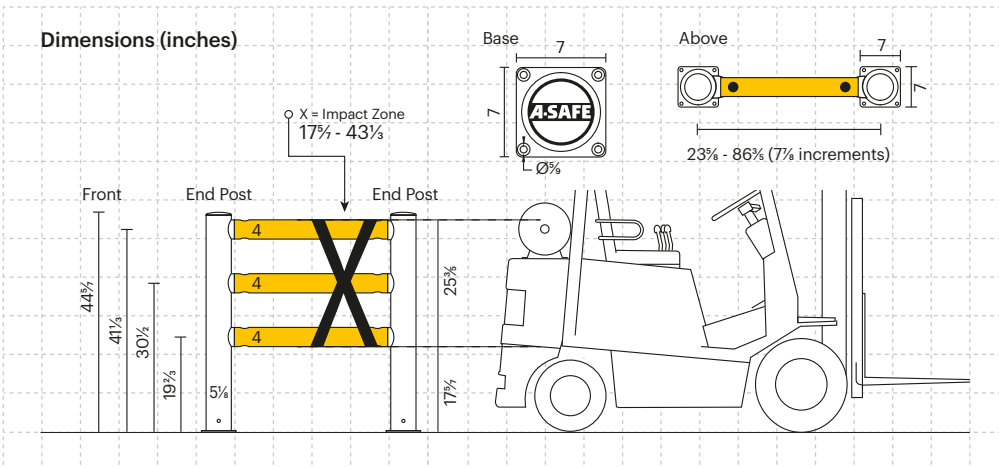
Impact Test	Impact Angle on 59 inch Post Centers			
	90°	67.5°	45°	22.5°
Mid Rail Max Energy (Joules)	5,800	6,795	11,600	39,605
End Post Max Energy (Joules) - 90°	3,000			
Mid Post Max Energy (Joules) - 90°	3,000			

Deflection at Max Energy 12 3/8 inches	Force to Bolt 9kN
---	----------------------

Material Properties	MEMAPLEX™
Temperature Range	14°F to 122°F
Ignition Temperature	698°F to 734°F
Flash Point	662°F to 698°F
Toxicity	Not Hazardous
Chemical Resistance	Excellent - ISO/TR 10358
Weathering Stability (Grey Scale)	5/5*
Light Stability (Blue Wool Scale)	7/8**
Static Rating (Surface Resistivity)	1015 - 1016 Ω
Hygiene Seals	Yes

\* Weathering scale 1 is very poor and 5 is excellent  
 \*\* Light stability scale 1 is very poor and 8 is excellent

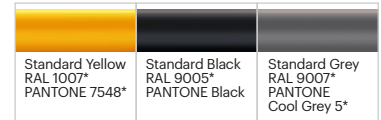


## Color Combinations

### Post Options



### Rail Options



\*Please note that the RAL and PANTONE colors listed are the closest match to standard A-SAFE colors, but may not be exact matches of the actual product color and should be used for guidance only.



$$f \left( -\left(\frac{5}{379}\right)^{-} - \frac{1}{8}7^{-}\frac{1}{3}\frac{1}{35}\left(-\right. \right. \\ \left. \left. - \frac{2}{3}\frac{1}{85}\frac{1}{8} \frac{1}{39}\left(\frac{1}{3}\frac{1}{8}^3 - \right. \right. \right. \\ \left. \left. \left. \frac{5}{8}\frac{7}{8}^* - - \frac{1}{3} - - \right. \right. \right)$$