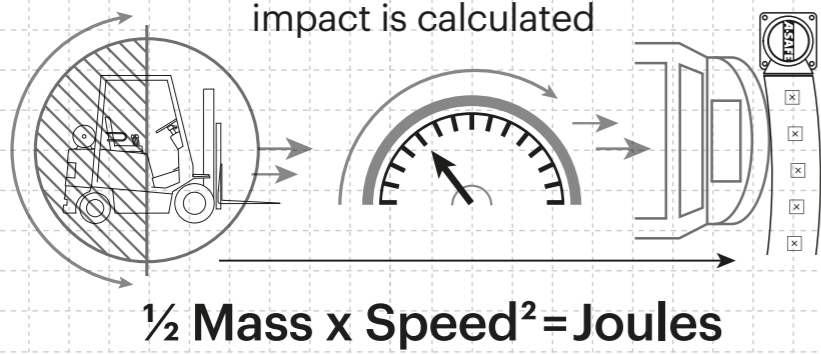


# Technical Information

How the energy from a vehicle impact is calculated



**Tested Impact Energy**  
**1,600 Joules**  
 Equivalent vehicle and speed  
 2 ton  $\times$  3 mph impact  
 90° Impact on Column Guard

**Impact Test**

Max Energy (Joules) at 90° **1,600**

Compression 4 inches

Material Properties	
Temperature Range	14°F to 122°F
Ignition Temperature	698°F to 734°F
Flash Point	662°F to 698°F
Toxicity	Not Hazardous
Chemical Resistance	Excellent - ISO/TR 10358
Weathering Stability (Grey Scale)	5/5*
Light Stability (Blue Wool Scale)	7/8**
Static Rating (Surface Resistivity)	1015 - 1016 Ω
Hygiene Seals	No

\* Weathering scale 1 is very poor and 5 is excellent  
 \*\* Light stability scale 1 is very poor and 8 is excellent

**Dimensions (inches)**

X = Impact Zone 0 - 20½

The corner sizes and expansion panels combine in different configurations to fit any universal sized square or rectangle column.

**Corner Sizes**

- 11% x 7
- 7% x 7
- 7% x 7
- 9% x 7
- 9% x 7
- 4 x 7
- 2 x 7

**Expansion Panel Sizes**

- 4 x 7
- 6 x 7
- 11% x 7

**Unit**

Standard Yellow  
RAL 1007\*  
PANTONE 7548\*

**Expansion Panels**

Standard Yellow  
RAL 1007\*  
PANTONE 7548\*

Standard Black  
RAL 9005\*  
PANTONE Black

**Color Combinations**

\*Please note that the RAL and PANTONE colors listed are the closest match to standard A-SAFE colors, but may not be exact matches of the actual product color and should be used for guidance only.



## FlexiShield™ Column Guard



Specifically designed to provide integrated column protection at any height for square and rectangle universal columns.

Quick and easy to install, the modular, interlocking sections ensure a tight fit to the column on all sides, avoiding vulnerable gaps, optimising space, and allowing the transfer of energy around and away from the column.

A stepped stacking feature connects multiple Column Guards together so they act as one integrated unit locked in place to disperse energy through the entire system for superior protection at increased heights.

The step also encloses the base plate of the column to shield fixings from impact.



( - (45- f5-44ff( -  
 - , -f ff f 46(4f7/8- , -))fff 46(4f7/8  
 - \* - -54 - -

## Engineered for performance

Whether in the resilience, flexibility and in-built memory of our exclusive Memaplex™ material or the unrivalled energy absorption of our unique 3-phase coupling system, a wealth of technical ingenuity goes into every A-SAFE product to ensure that it performs perfectly every time you need it to. We are continuously innovating to solve the greatest workplace safety challenges on behalf of our customers and our numerous patents attest to our industry-leading commitment to research and development.

**Absorption**  
Low density polyethylene delivers strong impact resistance at both ambient and sub-ambient temperatures. Chevron and rectangular indents increase the surface area, providing more material for energy absorption, and allowing the Column Protector to expand and contract before reforming to its original shape.

**Fork protection**  
Impact resisting chevron and rectangular indents increase fork protection by removing flat surface areas that are susceptible to fork penetration. Inner rib structure further enhances rigidity to resist and deflect forks.

**High strength**  
Inner and outer structural support ribs increase rigidity and maximize impact resistance for high strength protection.

**Controlled compression**  
Air-chamber regulator controls speed of air pressure release on impact, dissipating energy with even regularity throughout the Column Protector.



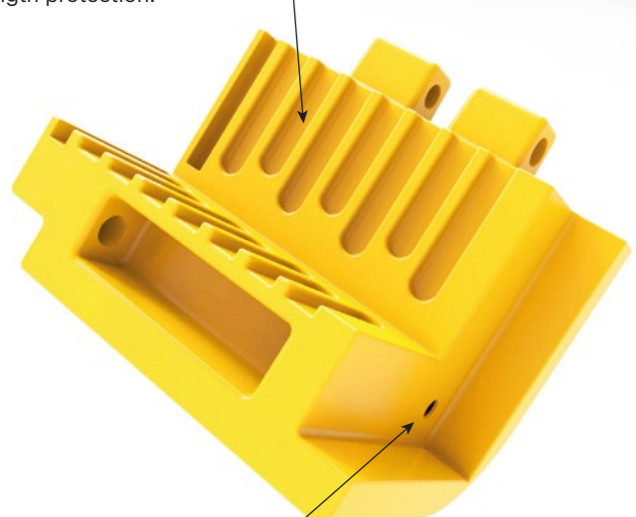
**Quick & easy installation**  
Simple assembly with modular, interlocking sections and the A-SAFE logo for clear orientation.

**Proven performance**  
Proven iFlex 36 OD rod connects the corners providing high performance strength and energy absorption. The interlocking pin connection allows the system to act as one for superior strength as well as independently for maximum flexibility and energy dissipation.

**Optimised footprint**  
Interlocking, modular system ensures a tight grip to column on all sides for fully encased protection and space optimization.

**Highly visible**  
Prominent chevron design delivers a clear warning with the distinctive A-SAFE yellow and contrasting black inserts creating a strong visual alert.

**Fixings protection**  
Inner step feature encapsulates and encloses the base plate to protect fixings.



**Stepped stacking feature** connects multiple Column Protectors together so they act as one integrated unit instead of separate systems. The step enables the stacked assembly to lock in place and allows energy to transfer throughout the entire system for even greater protection at increased heights.



**Modular & adaptable**  
Fully adaptable, modular system ensures a perfect fit to all square and rectangle universal columns and vertical structures.