

ACCELERATING IOT INFRASTRUCTURE ORCHESTRATION ON AZURE

Move faster with [Fathym's](#) IoT cloud infrastructure automation. For teams who would rather spend time building business-critical apps than researching cloud infrastructure.

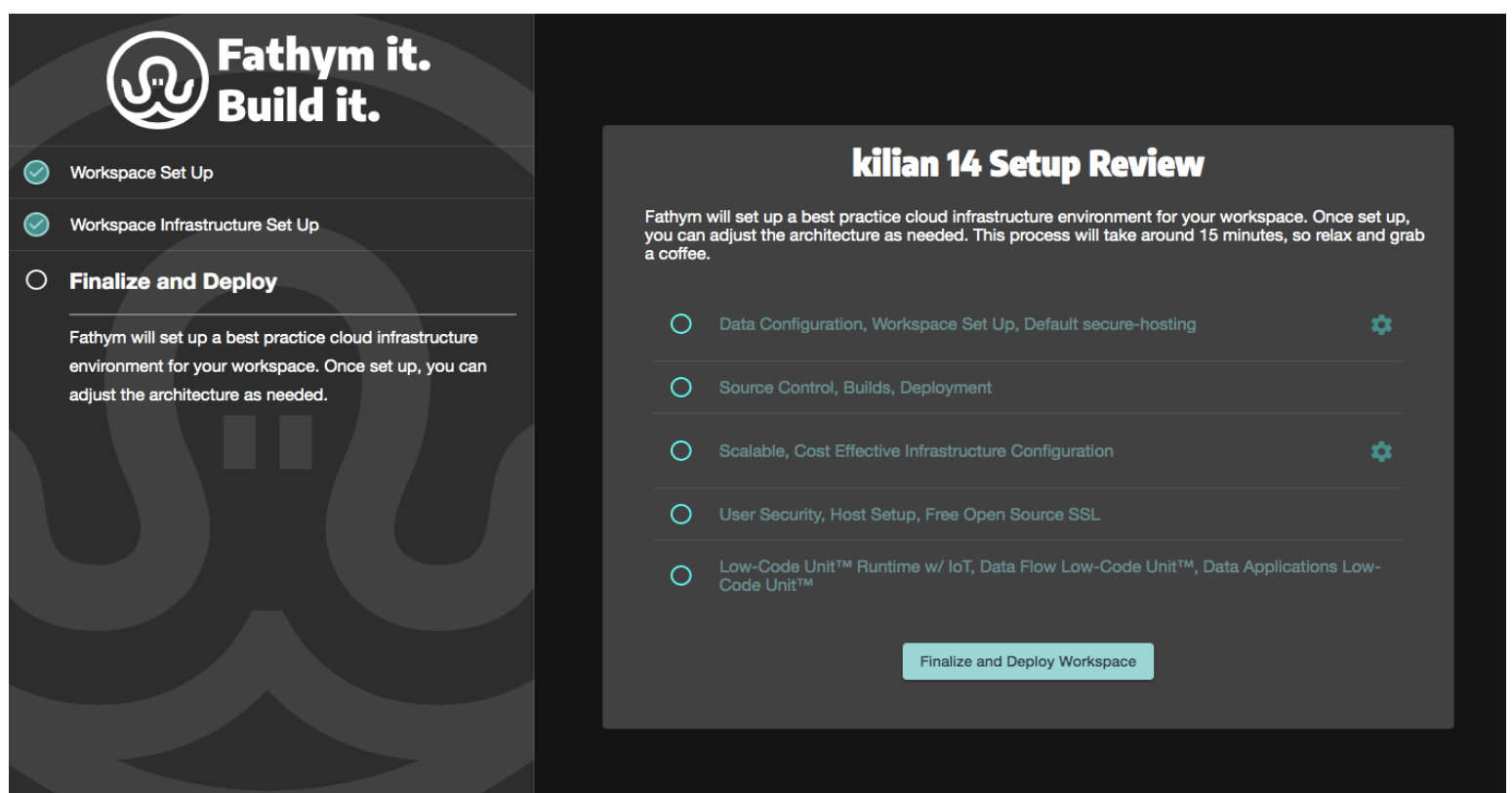
It can take months to get to grips with cloud resources in order to connect IoT hub, storage containers and stream analytics jobs. Fathym saves you all that time by rapidly provisioning an end-to-end best practice Azure cloud environment.

Let Fathym handle the heavy lifting so you can focus on creating value.

Best Practice Infrastructure Automation

Fathym automates the provisioning of a best practice IoT cloud infrastructure in your own Azure environment in only 15 minutes. By syncing to your own Azure cloud, you maintain full control of everything created through Fathym — There's no vendor lock in.

With Fathym, you no longer need to spend the time and resources to 'level up' and become cloud architects. Fathym provisions the infrastructure to connect devices and real-time data flows, including initial best practice data flow resources, such as IoT Hub, Event Hub, Cold Storage, Warm Storage and Hot Storage.

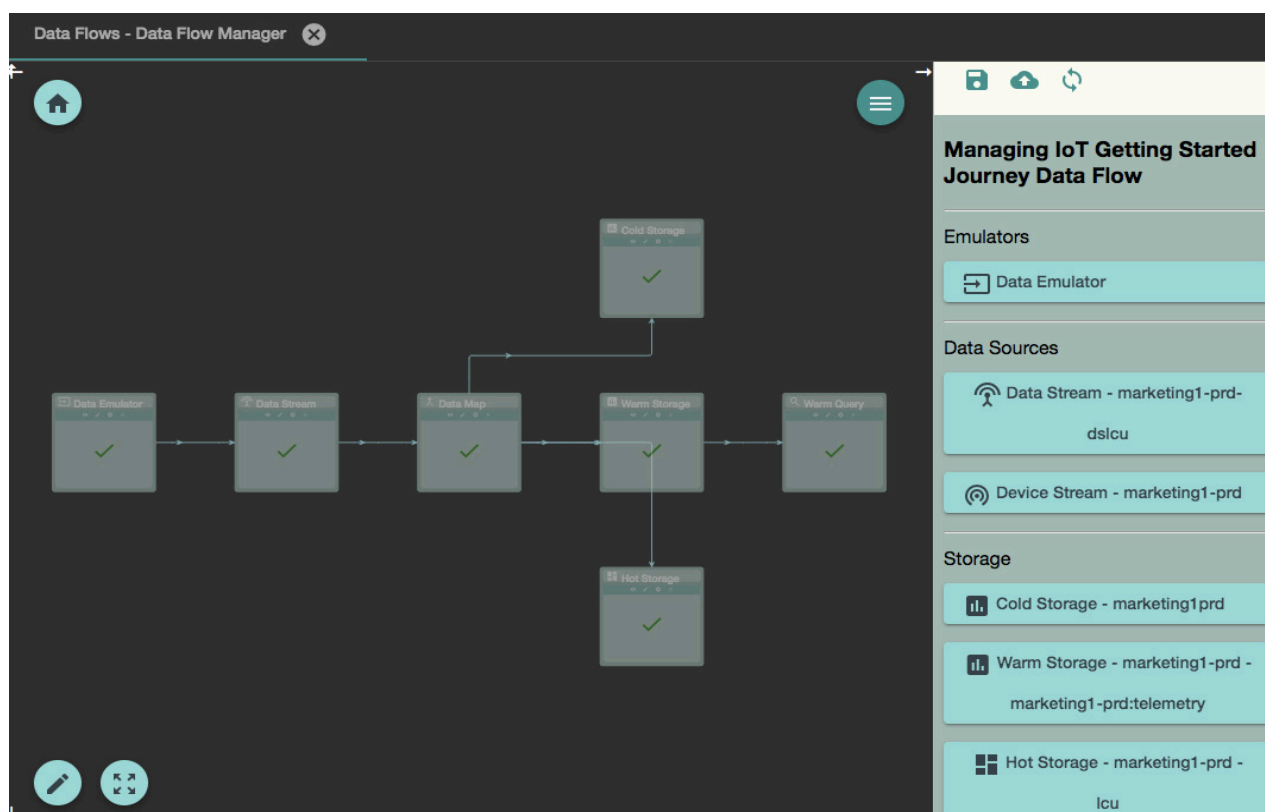


The screenshot displays the Fathym user interface. On the left, a sidebar shows a progress list with three items: 'Workspace Set Up' (checked), 'Workspace Infrastructure Set Up' (checked), and 'Finalize and Deploy' (selected). Below this, a message states: 'Fathym will set up a best practice cloud infrastructure environment for your workspace. Once set up, you can adjust the architecture as needed.' On the right, a 'kilian 14 Setup Review' dialog is open, containing a description: 'Fathym will set up a best practice cloud infrastructure environment for your workspace. Once set up, you can adjust the architecture as needed. This process will take around 15 minutes, so relax and grab a coffee.' The dialog lists five configuration items, each with a gear icon for settings: 'Data Configuration, Workspace Set Up, Default secure-hosting', 'Source Control, Builds, Deployment', 'Scalable, Cost Effective Infrastructure Configuration', 'User Security, Host Setup, Free Open Source SSL', and 'Low-Code Unit™ Runtime w/ IoT, Data Flow Low-Code Unit™, Data Applications Low-Code Unit™'. A 'Finalize and Deploy Workspace' button is located at the bottom of the dialog.

End-to-End Environment for Real-Time Streaming Data

In the initial setup process Fathym provisions your personal, cloud-based Integrated Developer Environment (IDE). Within your IDE, Fathym's data flow manager is a powerful drag and drop interface for easily configuring and provisioning Azure resources and IoT infrastructure environments.

Users can easily configure the following Azure cloud resources: IoT Hub (Device Stream), Event Hub (Data Stream), Stream Analytics Job (Data Map), Binary Storage (Cold Storage), Cosmos DB (Warm Storage), Service Bus Topic (Hot Storage), Azure Functions to create emulated data and an HTTP Function to query your data into a dashboard. Once saved and provisioned, in about a minute you have an end-to-end enterprise data flow.

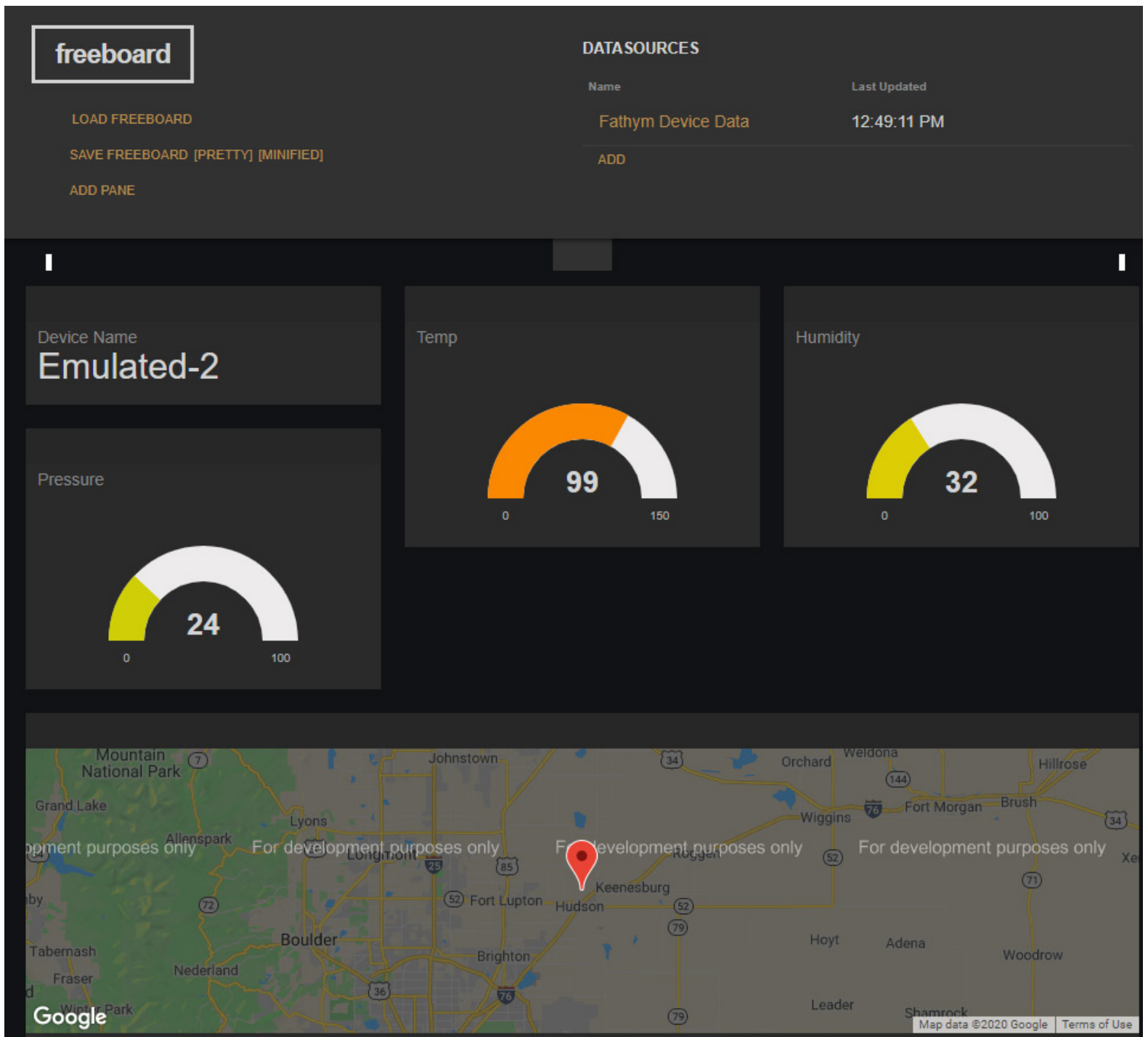


By configuring emulated datasets, you can easily verify that an end-to-end IoT infrastructure is working as expected and data is flowing to the correct outputs before tackling the challenge of connecting devices.

Connecting devices to the IoT Hub is done through the Azure portal. However, through our own experience of connecting devices we have put together a list of best practices in our documentation.

Data Insights for Business-Critical Solutions

Fathym enables you to gain insight and value from data faster. Connect your streaming data to the third-party or custom data analysis and visualization tools of your choice.



You can utilize Freeboard, an open-source IoT dashboard tool, to connect to and visualize real-time streaming device data. Fathym has created an NPM package of Freeboard that can be easily hosted on Fathym’s app management tool and connected to your data flow. Fathym also directs users on how to connect data from Warm Storage to Power BI reports. Customers can also enquire into using Fathym’s custom dashboard tools.

Let Fathym handle the infrastructure behind the scenes – Harness your streaming data for any business-critical, data-centric applications or machine learning use cases.

For More Visit: fathym.com