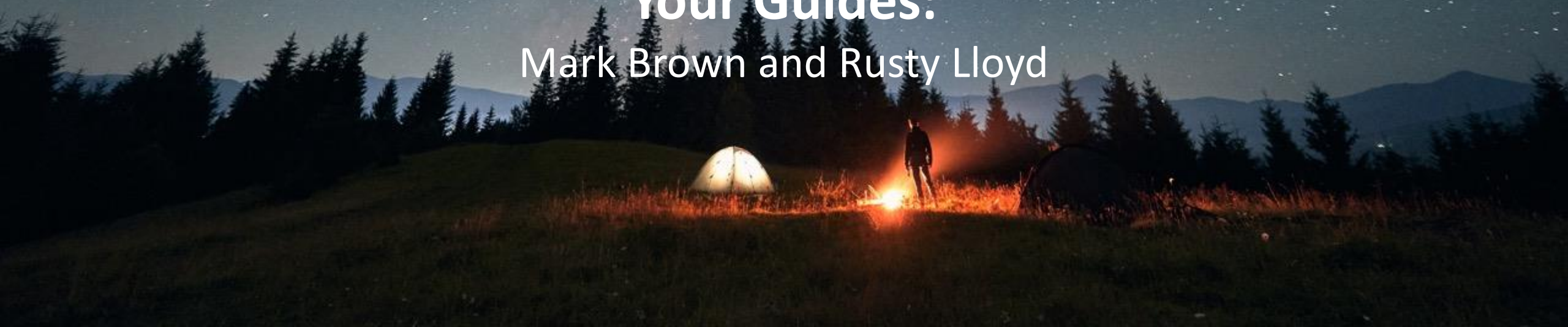




Rally / JIRA Adapter

Your Guides:

Mark Brown and Rusty Lloyd



Agenda

- Introduction
- What is the Rally Adapter for Jira?
- Security and Monitoring
- Recommended Services Engagement
- Adapter Support Details
- Recommended Workflow
- Q&A

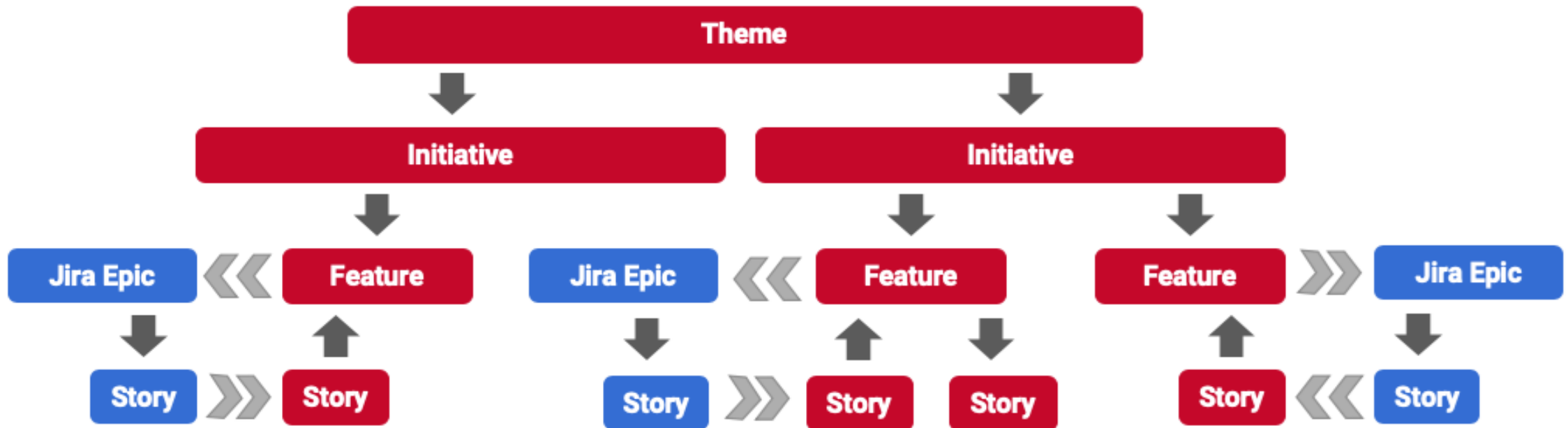
What is the Rally Adapter for Jira?



Connect Rally and Jira teams to promote team autonomy while maintaining visibility into the data and status that matters most.

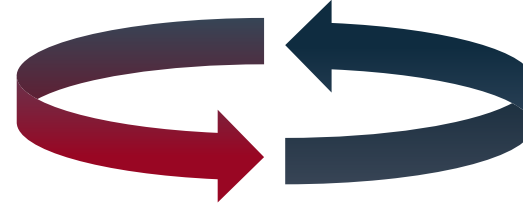
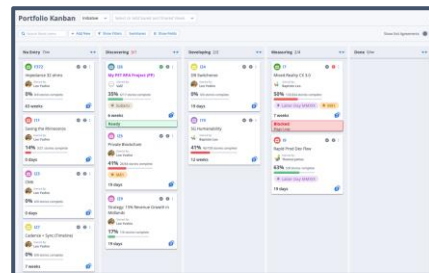
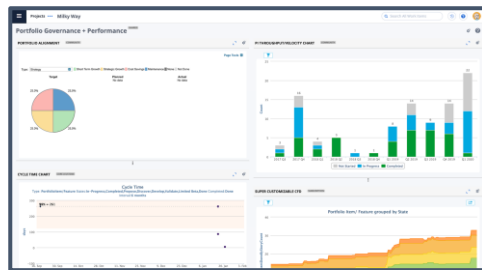
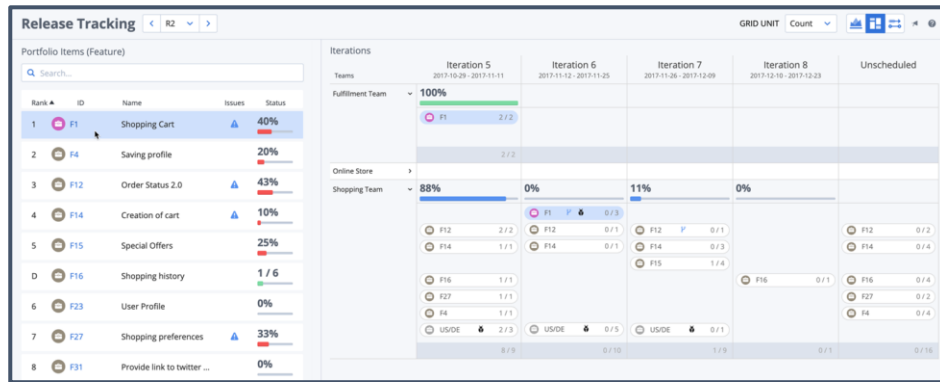
Visualizing and Tracking Work

Visualize and track work across your organization's **Jira** instances and projects in line with your **Rally** teams, providing a comprehensive view of planned and in-progress work across your execution teams.

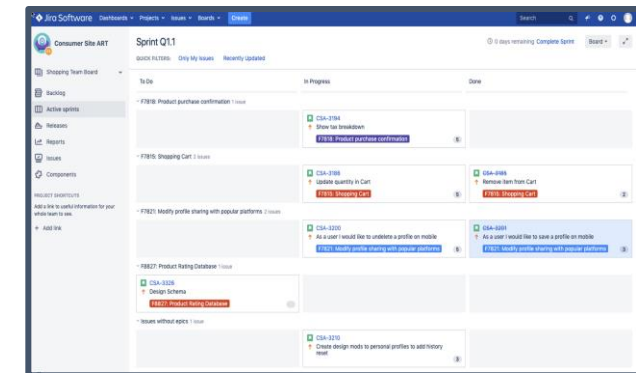
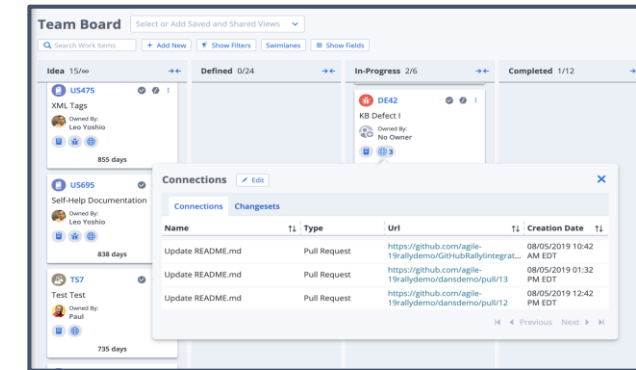


Balance developer preference with accountability to the business and improve scaled agile practices with teams in Rally and Jira

Coordinate **Program Level** Efforts In **Rally**



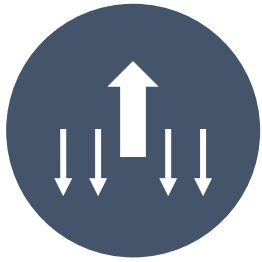
Team Planning and Execution In **Rally** or **Jira**



Have the data at your fingertips from the entire organizations to make informed decisions in real-time



Sync **Rally**
Features to
Jira Epics



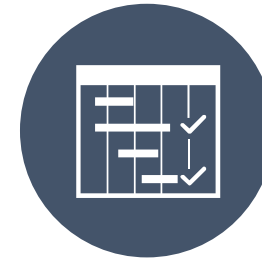
Map Multiple
Jira Instances
& Projects



Story
Syncing from
Jira to **Rally**



Flexibility to
Account for
Team Changes



Sprint Syncing
on Stories from
Jira to **Rally**



Dependency
Mapping and
Syncing

Security and Monitoring

- **100% On Premise** installation and support managed through **Replicated** **
- Integration service consists of **docker containers in a kubernetes** cluster
- Integrated Rally apps to **monitor the exchange of data** between **Rally** and **Jira**
- **Browser interface** used for setting up integration configuration
- **Continuous polling** to check for updates from external systems.



Recommended Services Engagement

- **Coaching and Integration Design**
- **Installation**
- **Configuration**
- **Testing**
- **Team Onboarding**
- **Training**



Why choose the new Rally Adapter for Jira???

NEW!!!

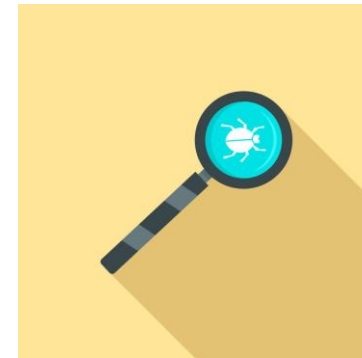
Rally Adapter For Jira



Advanced Features for Teams
Practicing **Agile at Scale**

EXISTING

Rally Connector For Jira



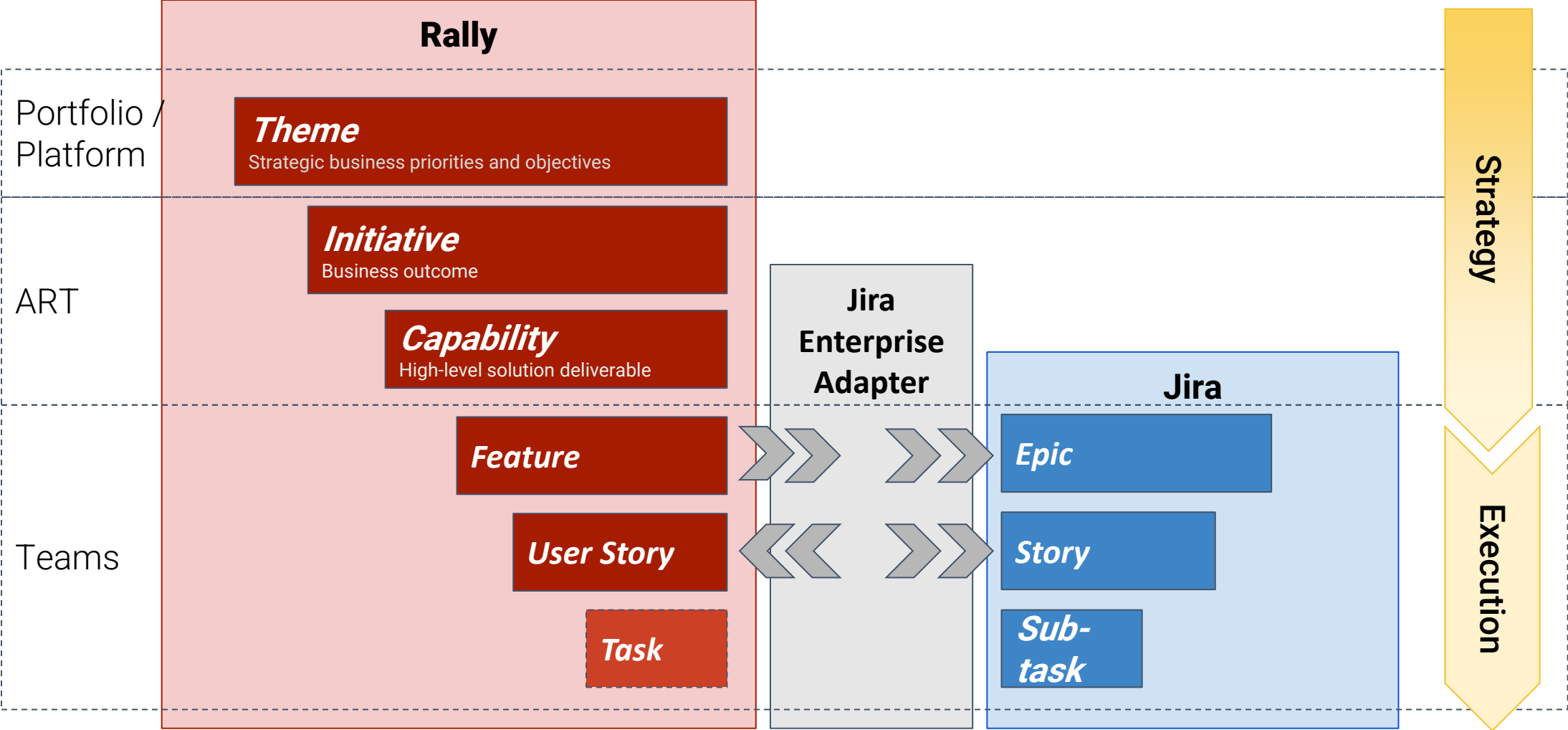
**Defect Management Use
Cases**

*Official partnership with OpsHub, and their Jira integration is still available via our reseller agreement as an alternative option

Adapter Support Details

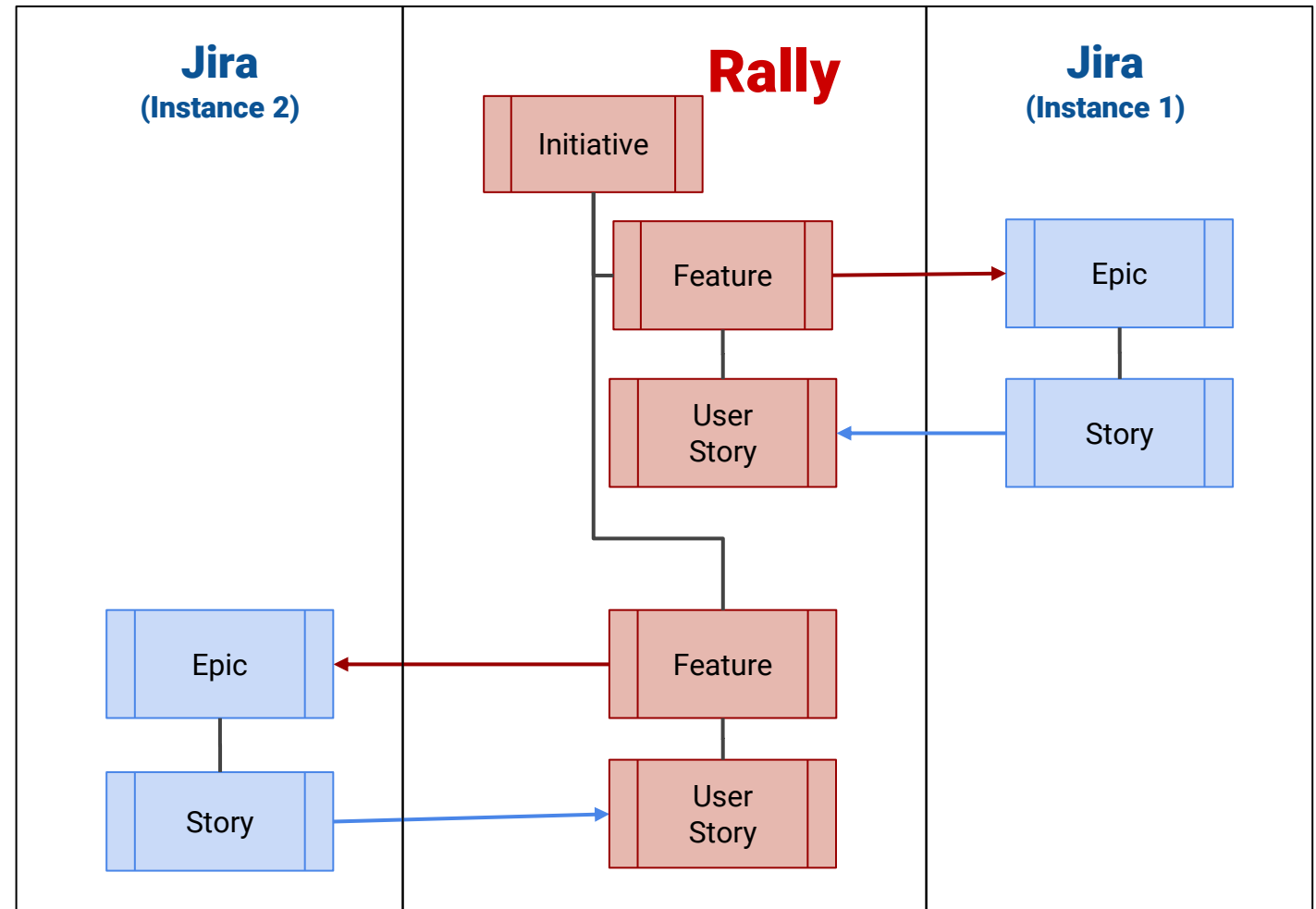
- Feature and Story syncing bi-directionally between Rally and Jira, can also sync defects (or other JIRA custom issue types) from Jira to Rally as stories (*sub Tasks in Jira are not synced)
- Multiple Jira instances and projects mapped to a single Rally workspace
- Continued mapping after initial set-up to accommodate the normal adjustments in the people/team structure of your organization
- Timebox matching between Rally and Jira based on naming conventions
- Regular Expression value mapping
- Large scale integration with centralized configuration
- Integration monitoring via Rally Apps

Portfolio Item/Artifact Hierarchy [aka. the Work]



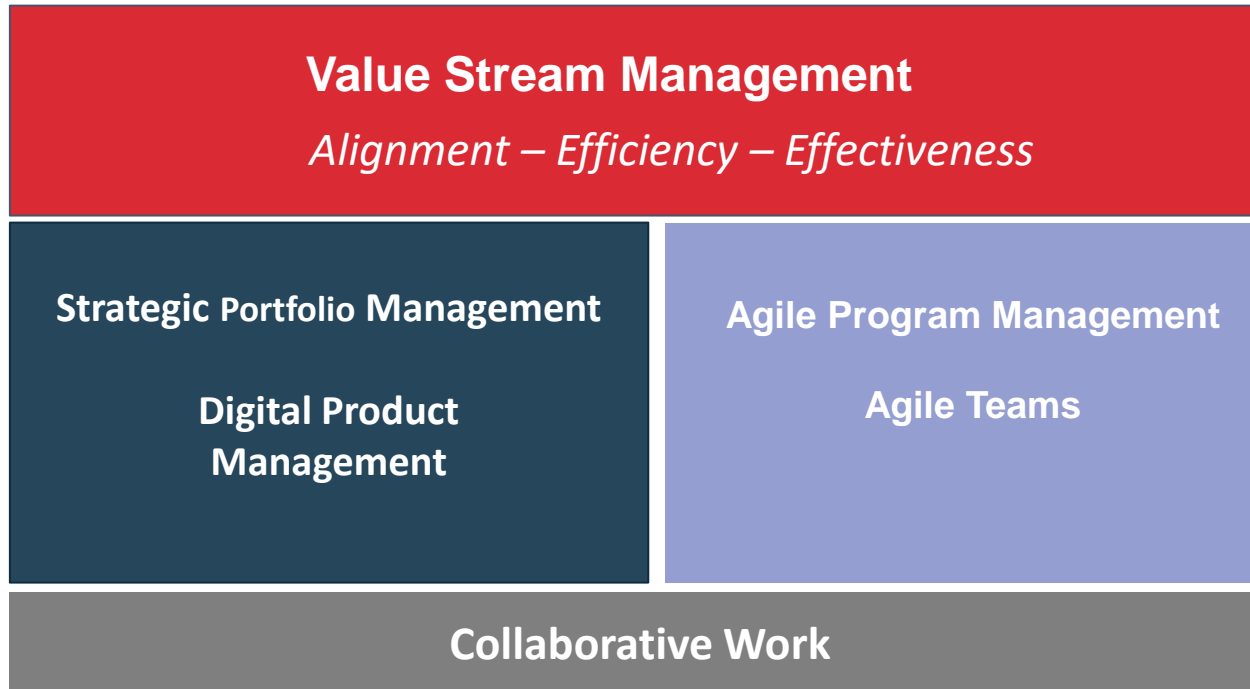
Recommended Workflow

- **Create/originate Features in Rally** that are synced into JIRA Epics.
- Epic updates may flow back from JIRA to Rally if there is some execution team refinement of feature data expected.
 - *While not required, ideally features **should** be originated in Rally if that is where planning is taking place.*
- In some scenarios, the execution teams want to clone a feature, or break a feature into multiple features in JIRA.
 - If this scenario is prevalent, then Features/Epics may originate in both systems.
- Depending on where the execution teams like to break down their features/epics, **Stories** can originate in JIRA or Rally.
- If stories only originate in JIRA, there is likely not value in syncing stories or updates from Rally to JIRA, so a unidirectional sync is recommended.



ValueOps - Value Stream Management

Value Stream Management enables organizations to optimize their end-to-end flow of value



Boeing is a large corporation with a myriad of teams that have to work in unison. To make sure that the funding is yielding the expected ROI, and that teams deliver on time and that customer regulatory demands are met we use ValueOps from Broadcom to match progress data from the teams with business objectives from the executives: - Lynda Van Vleet - Boeing

We need to have visualizations of analytics for the entire value stream, that may consist of teams outside of the defined hierarchy in Rally to eliminate blindspots"

Agile and DevOps are key transformation practices for software delivery teams, but they are not enough. VSM helps teams identify waste and focus on value while providing end-to end visibility to all stakeholders from planning to production" - Forrester

Questions?



Let Rego be your guide.

Thank You For Attending regoUniversity

Instructions for PMI credits

- Access your account at pmi.org
- Click on **Certifications**
- Click on **Maintain My Certification**
- Click on **Visit CCR's** button under the **Report PDU's**
- Click on **Report PDU's**
- Click on **Course or Training**
- Class Name = **regoUniversity**
- Course Number = **Session Number**
- Date Started = **Today's Date**
- Date Completed = **Today's Date**
- Hours Completed = **1 PDU per hour of class time**
- Training classes = **Technical**
- Click on **I agree** and **Submit**



Let us know how we can improve!
Don't forget to fill out the class survey.



Phone

888.813.0444



Email

info@regouniversity.com



Website

www.regouniversity.com